



# DUKE SOFTBALL

NFCA LEADOFF CLASSIC

FEB. 7-9

CLEARWATER, FLA.

GAMECHANGER/MLB NETWORK

## 2025 SCHEDULE

Date	Opponent	Time/Results
Feb. 7	vs. Penn State	! 5 p.m.
Feb. 7	vs. Mississippi State	! 8 p.m.
Feb. 8	vs. Missouri	! 1 p.m.
Feb. 8	vs. Northwestern	! 4 p.m.
Feb. 9	vs. Kentucky	! 11 a.m.
Feb. 14	vs. Boston College	^ 5 p.m.
Feb. 14	vs. Florida	^ 7 p.m.
Feb. 15	vs. Providence	^ 4:30 p.m.
Feb. 15	vs. Binghamton	^ 7 p.m.
Feb. 16	vs. Florida	^ 2 p.m.
Feb. 19	at East Carolina	3 p.m.
Feb. 19	at East Carolina	5 p.m.
Feb. 21	vs. Nebraska	% 4 p.m.
Feb. 21	vs. Howard	% 6:30 p.m.
Feb. 22	vs. BYU	% 12:30 p.m.
Feb. 22	vs. Minnesota	% 3 p.m.
Feb. 23	vs. UCLA	% 12 p.m.
Feb. 27	Michigan	5 p.m.
Feb. 28	South Carolina	6 p.m.
Mar. 1	South Carolina	1 p.m.
Mar. 2	South Carolina	12 p.m.
Mar. 4	Elon	4 p.m.
Mar. 7	at Clemson	* 6 p.m.
Mar. 8	at Clemson	* 1 p.m.
Mar. 9	at Clemson	* 12 p.m.
Mar. 11	at Tennessee	6 p.m.
Mar. 14	Syracuse	* 6 p.m.
Mar. 15	Syracuse	* 1 p.m.
Mar. 16	Syracuse	* 12 p.m.
Mar. 18	Liberty	4 p.m.
Mar. 18	Liberty	6 p.m.
Mar. 21	Florida State	* 6 p.m.
Mar. 22	Florida State	* 1 p.m.
Mar. 23	Florida State	* 12 p.m.
Mar. 28	at Louisville	* 6 p.m.
Mar. 29	at Louisville	* 1 p.m.
Mar. 30	at Louisville	* 12 p.m.
Apr. 2	at UNCW	5 p.m.
Apr. 4	North Carolina	* 6 p.m.
Apr. 5	North Carolina	* 1 p.m.
Apr. 6	North Carolina	* 12 p.m.
Apr. 11	at Pitt	* 6 p.m.
Apr. 12	at Pitt	* 3 p.m.
Apr. 13	at Pitt	* 1 p.m.
Apr. 15	at Charlotte	6 p.m.
Apr. 17	Notre Dame	* 6 p.m.
Apr. 18	Notre Dame	* 6 p.m.
Apr. 19	Notre Dame	* 1 p.m.
Apr. 23	at Campbell	5 p.m.
April 25	at NC State	* 6 p.m.
April 26	at NC State	* 4 p.m.
April 27	at NC State	* 1 p.m.
May 7-10	ACC Tournament	# TBD

### Bold indicates home dates

All times Eastern and subject to change

\* ACC Games

! NFCA Leadoff Classic (Clearwater, Fla.)

^ Bubly Invitational (Gainesville, Fla.)

% Mary Nutter Collegiate Classic (Cathedral City, Calif.)

# ACC Tournament (Chestnut Hill, Mass.)



	#7 DUKE	PENN STATE	#24 MISSISSIPPI STATE	#15 MISSOURI	#21 NORTHWESTERN	KENTUCKY
Head Coach	Marissa Young	Clarisa Crowell	Samantha Ricketts	Larissa Anderson	Kate Drohan	Rachel Lawson
Record at School	265-106	105-92	37-57	217-115	745-413-1	597-360-1
2024 Record	52-9	35-20	34-20	48-18	35-13	31-24
NFCA	7	RV	24	15	21	RV
USA Softball	8	RV	25	15	20	RV
Softball America	8	25	--	15	18	--
D1Softball	7	25	--	--	19	--

## BLUE DEVILS' PROBABLE LINEUP

POS.	NAME	PLAYER PROFILE
CF	D'Auna Jennings	2023 NFCA All-American, D1Softball Preason All-American, USA Softball POY Watch List
3B	Ana Gold	Powerhouse on offense, program's all-time career home runs leader (38)
LF	Amiah Burgess	Third Team All-ACC, started 56-of-61 games, held a .331 batting average (ranked fourth on team)
1B	Thessa Malau'ulu	Team captain, graduate transfer from UCLA, helped guide Bruins to 32nd WCWS app.
2B	Aminah Vega	2024 NFCA First Team All-American, team captain, 2024 ACC Defensive Player of the Year
DP	KK Mathis	Transfer from JMU, led the Dukes in RBI (38) and SB (8), 2023 NFCA Third Team All-Region
C	Kairi Rodriguez	Returning to the lineup after redshirting the 2024 season due to knee injury
RF	Brooklinn Thomas	New addition to the Blue Devils, two-time SCHSL State Champion and All-State selection
SS	Jada Baker	Team captain, power arm, one of six players to start all 61 games last season
POS.	NAME	PLAYER PROFILE
P	Cassidy Curd	USA Softball POY Watch List, Held a 1.31 ERA last season - led the ACC and ranked eighth nationally
P	Dani Drogemuller	Posted a 2.31 ERA, 5-0 record after 15 appearances in the circle, earning seven starts
P	Sophie Garner-Mackinnon	Made nine appearances last season, tossed a five-inning shutout in the run-rule victory over Army
P	Hailey Shuler	Two-way player, named 2023 Mission Most Valuable Player as a pitcher

## NEED TO KNOW

- Head coach **Marissa Young** enters her eighth season at the helm of the program and holds a 265-106 overall ledger.
- Young returned 11 letterwinners from last season and welcomed eight newcomers in freshmen Ava Bradshaw, Gabriella Mike, Hailey Shuler, Brooklinn Thomas and transfers Jess Oakland (Minnesota), Dakota Farmer (Penn), Thessa Malau'ulu (UCLA) and KK Mathis (James Madison).
- Duke is coming off its strongest campaign in 2024, setting a program record with a 52-9 overall ledger, capturing its second ACC Championship, third straight NCAA Super Regional appearance and advanced to the Women's College World Series for the first time in program history.
- The current freshman class checked in at No. 20 in the nation, according to Extra Innings Softball, and marked the fifth top 25 recruiting class in seven years of program history.
- The Blue Devil defense held opponents scoreless in 20-of-61 games last season. The 20 shutouts ranked first in the ACC and fifth nationally.
- On offense, Duke maintained one of the nation's best batting averages (.322) and averaged 6.52 runs per game, which ranked eighth in the NCAA.
- For the third time in four years, Young and her coaching staff were named the 2024 National Fastpitch Coaches Association (NFCA) Southeast Region Staff of the Year.
- Redshirt junior Jada Baker, graduate transfer Thessa Malau'ulu and junior Aminah Vega were selected as captains for the upcoming 2025 campaign, following a vote from the team. Baker will serve as captain for the second straight season while Malau'ulu and Vega were selected for the first time in their careers.

# DUKE SOFTBALL QUICK FACTS

## CONTACT

Information about the 2024 Duke University softball team will be coordinated by Assistant Director of Communications Colleen Gunning. All interview requests for student-athletes and coaches should be made to Colleen Gunning at (919) 491-1939 or [colleen.gunning@duke.edu](mailto:colleen.gunning@duke.edu).

## GODUKE.COM

You can find all the updated statistics, releases, bios, pictures and history of Duke Softball on GoDuke.com.

## TWITTER/FACEBOOK/INSTAGRAM

Fans can keep up with the Blue Devil softball team by following the program on Twitter, Instagram and Facebook. Search "DukeSoftball" on all three platforms and follow/like the program's page to receive up-to-the-minute and behind-the-scenes information on the program.

Fans can also get exclusive coverage of Duke athletics by following the school's Snapchat account by searching "dukeathletics".

## GENERAL INFORMATION

Name .....	Duke University
Location .....	Durham, N.C.
Founded .....	1838, Trinity College
Enrollment .....	6,994 undergraduates
Nickname .....	Blue Devils
Colors .....	Duke Blue & White
Conference .....	Atlantic Coast
President .....	Dr. Vincent E. Price
VP/Director of Athletics .....	Nina King
Assoc. Athletic Director/SWA .....	Heather Ryan
Stadium .....	Duke Softball Stadium
Created .....	2017
Seating Capacity .....	500
Dimensions .....	L-190, C-220, R-190

## COMMUNICATIONS

Assistant Director of Communications (Softball) .....	Colleen Gunning
Office Phone .....	(919) 684-2668
Cell Phone .....	(919) 491-1939
Email Address .....	<a href="mailto:colleen.gunning@duke.edu">colleen.gunning@duke.edu</a>
Website .....	<a href="http://www.GoDuke.com/softball">www.GoDuke.com/softball</a>
Twitter .....	<a href="https://twitter.com/DukeSoftball">www.twitter.com/DukeSoftball</a>
Instagram .....	<a href="https://www.instagram.com/DukeSoftball">www.instagram.com/DukeSoftball</a>
Facebook .....	<a href="https://www.facebook.com/DukeSoftball">www.facebook.com/DukeSoftball</a>

## TEAM STAFF

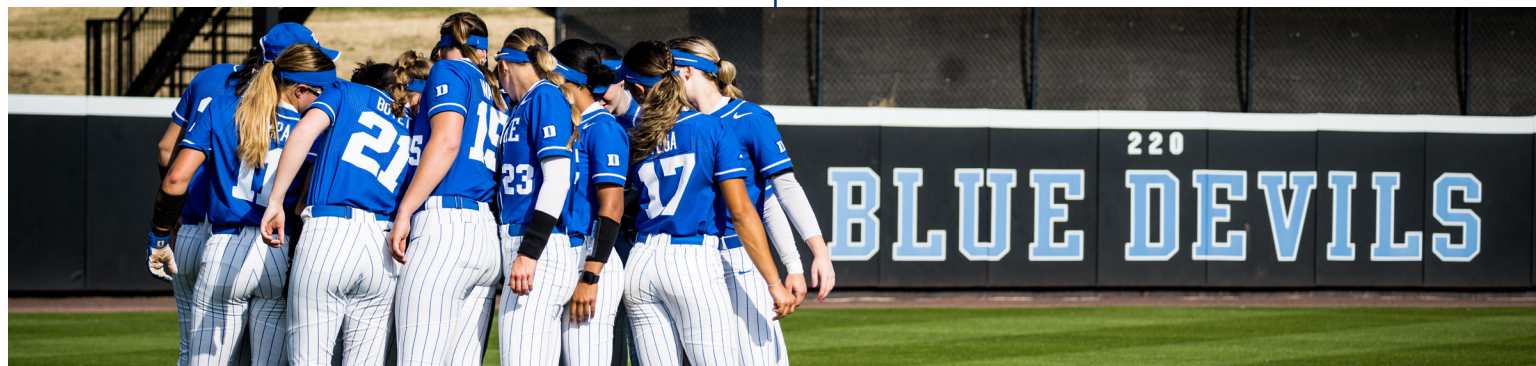
Head Coach .....	Marissa Young (Eighth Season)
Alma Mater .....	Michigan, 2003
Duke Record .....	265-106 (.714)
Career Record .....	Same
ACC Record .....	109-48 (.694)
Associate Head Coach .....	Olivia Watkins (Third Season)
Alma Mater .....	Western Kentucky, 2015
Associate Head Coach .....	Taylor Wike (Second Season)
Alma Mater .....	North Carolina, 2018
Assistant Coach .....	Parker Staggs (First Season)
Alma Mater .....	Arkansas, 2022
Director of Player Development .....	Lisa Maulden (First Season)
Alma Mater .....	Seattle, 2015
Student Assistant Coach .....	Kennedy Barron
Certified Athletic Trainer .....	Nicole Segala
Strength Coach .....	Erika McCourt
Academic Counselor .....	Abby DeHaas
Facilities/Game Ops .....	Chad Bernstein
Equipment Manager .....	Melynda Post

## PROGRAM HISTORY

Program Years .....	2018-Present (8)
Overall Record (8 Seasons) .....	265-106 (.714)
Home Record .....	138-40
Away Record .....	79-42
Neutral Record .....	49-25
ACC Record (8 Seasons) .....	109-48 (.694)
ACC Tournament Appearances .....	6 (2018, 2019, 2021, 2022, 2023, 2024)
ACC Tournament Record .....	9-4 (.692)
ACC Championships .....	2 (2021, 2024)
NCAA Tournament Appearances .....	3 (2021, 2022, 2023, 2024)
NCAA Super Regional Appearances .....	3 (2022, 2023, 2024)
NCAA Women's College World Series Appearances .....	1 (2024)
NCAA Tournament Record .....	13-10 (.565)

## TEAM INFORMATION

2024 Record .....	52-9
Letterwinners Returning/Lost .....	11/8
Position Starters Returning/Lost .....	5/5
Pitchers Returning/Lost .....	3/2
Newcomers .....	8



# 2025 DUKE SOFTBALL ROSTER

NO.	NAME	POS.	B/T	HT.	YR.	HOMETOWN (PREVIOUS SCHOOL)
2	Sophie Garner-Mackinnon	P	R/R	5-8	Jr.	West Hartford, Conn. (Hall)
4	Ana Gold	INF	R/R	5-7	Sr.	Ballston Spa, N.Y. (Ballston Spa)
5	Amiah Burgess	OF	L/R	5-7	So.	League City, Texas (Clear Creek)
6	Ava Bradshaw	P	R/R	5-9	Fr.	South Lyon, Mich. (South Lyon)
8	Gabriella Mike	P/UTL	R/R	5-7	Fr.	Altamonte Springs, Fla. (Lake Mary)
9	Jessica Oakland	INF	R/R	5-9	Jr.	San Jose, Calif. (St. Francis/Minnesota)
10	D'Auna Jennings	OF	L/R	5-6	Jr.	Houston, Texas (North Shore Senior)
11	Hailey Shuler	P/INF	R/R	5-8	Fr.	Lake Balboa, Calif. (Sierra Canyon)
13	Dakota Farmer	C	R/R	5-6	So.	Leander, Texas (Glenn/Penn)
16	Dani Drogemuller	P	R/R	5-9	Gr.	Frankfort, Ill. (Lincoln-Way/Pittsburgh)
17	Aminah Vega	INF	L/R	5-7	Jr.	DeBary, Fla. (University)
19	Cassidy Curd	P	L/L	5-7	Jr.	Port St. Lucie, Fla. (Treasure Coast)
22	Linh Le	INF	R/R	5-9	So.	Milpitas, Calif. (Milpitas)
24	Thessa Malau'ulu	UTL	L/R	5-7	Gr.	Long Beach, Calif. (St. Anthony/UCLA)
25	Jada Baker	INF	R/R	5-4	R-Jr.	Longwood, Fla. (Lyman)
27	KK Mathis	INF	R/R	5-8	Jr.	West Chester, Ohio (Lakota West/James Madison)
32	Kairi Rodriguez	C	R/R	5-4	R-So.	West Palm Beach, Fla. (Palm Beach Gardens)
42	Brooklinn Thomas	UTL	R/R	5-9	Fr.	Durham, N.C. (Panther Creek)
99	Aleyah Terrell	OF	L/R	5-4	Jr.	Greensboro, N.C. (Page/Boston College)

**Head Coach:** Marissa Young (Eighth Season) - Michigan, 2003

**Associate Head Coach:** Olivia Watkins (Third Season) - Western Kentucky, 2015

**Associate Head Coach:** Taylor Wike (Second Season) - North Carolina, 2018

**Assistant Coach:** Parker Staggs (First Season) - Arkansas, 2022

**Director of Player Development:** Lisa Maulden (First Season) - Seattle, 2015

**Student Assistant Coach:** Kennedy Barron

## Pronunciation Guide

ANA Gold.....	Ah-na
ALEYAH Terrell .....	Ah-lee-yah
KAIRI Rodriguez.....	Kai-ree
LINH LE .....	Lynn Lee
Thessa MALAU'ULU .....	muh-LAU-oo-loo

## By Class

Graduate Students.....	2
Seniors.....	1
Redshirt Juniors.....	1
Juniors.....	7
Redshirt Sophomores.....	1
Sophomores .....	3
Freshmen.....	4

## By State

Florida .....	5
California.....	4
Texas.....	3
North Carolina .....	2
Ohio.....	1
Connecticut .....	1
Illinois.....	1
Michigan .....	1
New York.....	1

## TEAM NOTES

### TEAM EIGHT

After its inaugural season in 2018, Duke has quickly made its mark on the softball world, accumulating 265 wins and finishing above .500 in six of its last seven years.

The Blue Devils are coming off their strongest campaign in 2024, setting a program record with a 52-9 overall ledger, capturing their second ACC Championship, third straight NCAA Super Regional appearance and advanced to the Women's College World Series for the first time.

Head coach **Marissa Young** returns 11 letterwinners from last season and welcomed eight newcomers in freshmen **Ava Bradshaw**, **Gabriella Mike**, **Hailey Shuler** and **Brooklinn Thomas**, along with transfers **Dakota Farmer** (Penn), **Thessa Malau'ulu** (UCLA), **KK Mathis** (James Madison) and **Jessica Oakland** (Minnesota).

### NATIONALLY RANKED OPPONENTS

Duke's 2025 schedule includes 15 matchups with teams featured in the NFCA Preseason Top-25 poll, including four in the top 10.

The Blue Devils are set to face No. 3 Florida, No. 5 UCLA, No. 6 Tennessee, No. 9 Florida State, No. 15 Missouri, No. 19 Nebraska, No. 21 Northwestern, No. 24 Mississippi State and No. 25 Clemson, while Penn State, Kentucky, BYU, Michigan, South Carolina and Liberty received votes.

**All-time, Duke holds a 35-51 record against ranked opponents.**

### DUKE IN THE RANKINGS

The Blue Devils have earned a spot in the top-25 of all four major preseason polls for the fourth time in the program's eight-year history.

NFCA/GoRout: No. 7

D1Softball: No. 7

ESPN.com/USA Softball: No. 8

Softball America: No. 8

### BAKER, MALAU'ULU AND VEGA NAMED 2025 CAPTAINS

Redshirt junior Jada Baker, graduate transfer Thessa Malau'ulu and junior Aminah Vega were selected as captains for the upcoming 2025 campaign, following a vote from the team.

Baker will serve as captain for the second straight season while Malau'ulu and Vega were selected for the first time in their careers.

### GOOD AS GOLD

During her junior season, **Ana Gold** continued to rewrite Duke's record books. She became the first Blue Devil to send out two grand slams in a single game during Duke's 18-0 victory over North Dakota State, while also setting the single-game program record with eight RBI against the Bison.

The Ballston Spa, N.Y., native blasted nine home runs last season and became Duke's all-time career home runs leader with 38 long balls.

Gold was the spark to the Blue Devils' offense in the ACC Championship game against Florida State, bringing in the game-tying run late in the sixth inning to help guide Duke to a 6-3 comeback victory.

The starting third baseman was one of six players on the team to start all 61 games and finished the year with a .269 batting average, 49 hits, 44 RBI and a team-high three triples.

Gold also scored Duke's lone run against No. 14 Alabama in the Women's College World Series with a solo blast in the second inning.

### CURD CAUSING CHAOS IN THE CIRCLE

Left-handed pitcher **Cassidy Curd** posted another stellar season with the Blue Devils in 2024. The Port St. Lucie, Fla., native finished with a 13-4 record after 32 appearances inside the circle. Her 1.31 ERA led the ACC and ranked eighth nationally.

The lefty played a crucial role in the Blue Devils' postseason success, hurling 4.0 hitless innings of relief against Florida State as Duke captured its second ACC title in four years.

Curd also earned both wins over Missouri during the 2024 NCAA Super Regional, including tossing a career-high 8.1 innings and fanning a game-high seven strikeouts in the series finale.

She was also named ACC pitcher of the week twice during the regular season, after strong performances against South Dakota State and North Carolina.

Heading into her junior season, Curd was named to the USA Softball Collegiate Player of the Year Watch List and checked in at No. 33 and No. 35 in the D1Softball and SoftballAmerica Top 100 Player Rankings, respectively.

### BRINGING HER A-GAME

A 2024 National Fastpitch Coaches Association (NFCA) First Team All-American, junior **Aminah Vega** is coming off a standout sophomore season.

Last year, Vega helped power the Blue Devil offense, closing out the year with a .369 batting average and 20 multi-hit games.

The DeBary, Fla., native saw action in 59-of-61 games and finished second on the team in home runs (12), doubles (18) and RBI (52).

The starting second baseman earned NFCA All-Region honors for the second time in her career, after being named to the first team in 2024 and second team in 2023. Vega was also voted the 2024 ACC Defensive Player of the Year and named to the ACC All-Tournament team.

Vega earned preseason All-America honors from D1Softball and SoftballAmerica heading into her junior season.

### JUNIOR YEAR JENNINGS

Junior **D'Auna Jennings** continued to prove her power at the plate in her first two seasons with the Blue Devils. She was one of six players to earn a spot in the starting lineup in all 61 games last season, primarily at centerfield.

She posted the team's second-highest batting average of .390, while tallying career highs in runs scored (52) and RBI (20).

The lefty slapper sent out her first career home run against South Carolina during the NCAA Durham Regional and tallied another to help lead the Blue Devils to a 4-3 victory over Missouri and advance to the Women's College World Series for the first time in program history.

Jennings led the team with 14 stolen bases on the year, while her 76 hits and .390 batting average ranked fourth and ninth, respectively, on the conference charts.

A 2023 NFCA Second Team All-American, Jennings also garnered D1Softball Preseason All-America honors to begin her junior year campaign.

Duke was one of seven programs with multiple players selected to the list, joining Florida (5), Texas (4), Oklahoma (3), UCLA (3), Oklahoma State (3) and Florida State (3).

# TEAM NOTES

## FRESHMAN FOUR

The Blue Devils freshmen class of **Ava Bradshaw**, **Gabriella Mike**, **Hailey Shuler** and **Brooklinn Thomas** checked in as the No. 20 signing class in the nation, according to Extra Innings Softball.

The 2024 class marks the fifth top-25 recruiting class in the program's eight-year history.

"I am thrilled about the four women we have added to the Duke tradition of excellence," Young said. "They come in as the 20th-ranked recruiting class in the country. This 2024 class is going to be an impactful, dynamic group to watch. They have been battle-tested against the best teams in the country and are excited to contribute to a top-10 program and chase championships. We know that success starts in the circle and this class brings three quality arms to add to our staff, in addition to speed and athleticism."

## DUKE IN THE ACC

Coming off a record-setting 2024 campaign, the Blue Devils were chosen to top the league for the first time in the program's seven-year history.

Last season, the Blue Devils set a program record with a 52-9 overall ledger, captured its second ACC Championship, made their third straight NCAA Super Regional appearance and first Women's College World Series appearance.

## ACC COACHES POLL

1. Duke - 193 points (11 first-place votes)
2. Florida State - 183 points (4 first-place votes)
3. Virginia Tech - 165 points
4. Stanford - 143 points
5. Virginia - 140 points
6. California - 130 points
7. Clemson - 126 points
8. Georgia Tech - 87 points
9. North Carolina - 85 points
10. Louisville - 73 points
11. Notre Dame - 72 points
12. Boston College - 66 points
13. NC State - 65 points
14. Syracuse - 31 points
15. Pitt - 16 points

## PRESEASON ALL-ACC ACCOLADES

Following a vote from the league's 15 head coaches, juniors **Cassidy Curd**, **D'Auna Jennings** and **Aminah Vega** earned individual recognition after being named to the Preseason All-ACC Team.

## 2025 USA SOFTBALL COLLEGIATE PLAYER OF THE YEAR WATCH LIST

The Blue Devil trio of juniors **Cassidy Curd**, **D'Auna Jennings** and **Aminah Vega** were among the 53 student-athletes named to the 2025 USA Softball Collegiate Player of the Year Watch List.

## 40-WIN SEASONS

The Blue Devils set a program record with 52 wins after defeating No. 10 Missouri in the 2024 NCAA Super Regionals to advance to the Women's College World Series for the first time in program history. Duke finished the year with a 52-9 overall ledger and have now registered 40-plus wins in each of the last four seasons.

## 2025 PRESEASON D100 PLAYER RANKINGS

The Blue Devil quartet of senior **Ana Gold** and juniors **Cassidy Curd**, **D'Auna Jennings** and **Aminah Vega** were among the top players recognized in the D1Softball Preseason D100 Player Rankings.

Vega led the way for the Blue Devils, earning the No. 14 spot, followed by Curd at No. 33, Jennings at No. 45 and Gold at No. 60.

Texas led all programs with eight players selected for the list followed by Florida (7), Oklahoma (6), UCLA (5), Oklahoma State (5), Arkansas (4), Duke (4), Tennessee (4), and Virginia Tech (4).

## 2024 IN REVIEW

Head coach **Marissa Young**, along with her staff of assistant coaches **Olivia Watkins**, **Taylor Wike** and **Bryan Jones** and director of player development **Nicole Schaffer**, helped guide the Blue Devils to another record-setting season.

For the third time in four years, the Duke softball coaching staff was named the NFCA Southeast Region Staff of the Year.

Duke saw its strongest campaign in 2024, setting a program record with a 52-9 overall ledger, capturing its second ACC Championship, third straight NCAA Super Regional appearance and advanced to the Women's College World Series for the first time in program history.

Under the staff's leadership, the Blue Devils developed three NFCA All-Americans in **Claire Davidson**, **Aminah Vega** and **Jala Wright**. Davidson was one of five unanimous selections and joined Vega as the first players to garner first team recognition, while Wright earned second team honors.

Duke also brought home four of the five major ACC end-of-year awards. Davidson and Wright were unanimously voted the ACC Player and Pitcher of the Year, respectively, while Vega was named the Defensive Player of the Year. Young was also tabbed the Coach of the Year for the first time in her career. All four major awards were the first in program history.

A league-high four Blue Devils were also honored with First Team All-ACC distinction in Davidson, Wright, Vega and sophomore **Cassidy Curd**, while freshman **Amiah Burgess** was selected to the All-ACC third team. Burgess was also named to the All-ACC freshman team.

After receiving four top-10 preseason rankings, the Blue Devils continued to climb in the polls throughout the season. Duke broke into the top-5 of all four major polls for the first time following a three-game sweep of then-No. 15 Virginia Tech. The Blue Devils earned the program's first No. 1 ranking when Softball America unveiled its Top 25 poll in week nine.

# MEET THE COACHES

## Marissa Young - Head Coach

Eighth Season  
Michigan, 2003

After being named the first head softball coach at Duke University on July 29, 2015, Marissa Young has put together a 265-106 record in her seven years at the helm of the Duke softball program.

Young led Duke to its strongest campaign in 2024, setting a program record with a 52-9 overall ledger, capturing its second ACC Championship, third straight NCAA Super Regional appearance and advanced to the Women's College World Series for the first time in program history. Under her leadership, the Blue Devils developed three NFCA All-Americans in Claire Davidson, Aminah Vega and Jala Wright. Duke also brought home four of the five major ACC end-of-year awards as Davidson and Wright were unanimously voted the ACC Player and Pitcher of the Year, respectively, while Vega was named the Defensive Player of the Year. Young was also tabbed the Coach of the Year for the first time in her career. Young and her staff were recognized for their efforts by being named the NFCA Southeast Region Staff of the Year for the third time in four years.

Building on their success, the Blue Devils continued to reach new heights in 2023 by earning their third-consecutive bid to the NCAA Softball Championships, hosting the first Super Regional at Duke Softball Stadium and setting numerous single-season records along the way. Freshman standouts Cassidy Curd and D'Auna Jennings became the first two Blue Devils to represent the program as top-10 finalists for the 2023 TUCCI/NFCA Freshman of the Year. Jennings was later named one of the top three finalists for the award. Duke and UCLA were the only two programs with a pair of honorees. Jennings also garnered NFCA Second Team All-America honors after setting school single-season records in batting average (.462) and hits (80).

Young guided the program to a historic 2021 campaign, compiling a 44-12 record in which the Blue Devils won their first ACC Championship title and earned a No. 13 national seed in their first NCAA appearance. Duke was consistently ranked in the national polls every week since the preseason. The Blue Devils saw four All-ACC and three All-Region selections, while Duke had its first All-American in program history with junior Deja Davis earning All-America Second Team honors.

Before the 2020 season was shortened by COVID-19, Young's squad saw its best start in program history with a 23-4 record. The Blue Devils ended their season at No. 25 in the final ESPN.com/USA Softball Collegiate Top 25 Poll, marking the first time Duke has cracked into the national polls.

Following a strong inaugural season, Duke posted a 25-31 record in 2019. The Blue Devils went 11-13 in league action, earning the sixth seed in their second straight ACC Tournament appearance. Young challenged the team to a tough non-conference schedule, opening the year at the Puerto Vallarta College Challenge where they went 2-2 with wins over Notre Dame and Liberty before Duke hosted the ACC/Big Ten Challenge, traveled to California for the Mary Nutter Collegiate Classic and rounded out its non-conference slate with the Duke Invitational.

During the 2019 campaign, the Blue Devils won four ACC series, including a sweep on the road at Georgia Tech. Young coached Peyton St. George to her second ACC honor as the sophomore was named to the All-ACC Second Team after turning in a 1.83 ERA in league play. Guiding her players to success both on and off the field, George, Jameson Kavel, Kristina Foreman and Deja Davis were all All-ACC Academic Team selections.

The Blue Devils' 29 wins marked the fifth-most by an ACC program in its first season of play and made them the seventh program in league history to finishing its inaugural season with a winning record. Young's squad didn't waste time in getting the program's first win, as they defeated Florida Atlantic in Boca Raton, Fla., to open the season. Young and Co. turned around the following week and made major noise in their first home games in Duke softball history, sweeping Penn State and Purdue in the 2018 ACC/Big Ten Challenge at the Duke Softball Stadium.

Duke's 13 wins in conference play were highlighted by four series victories, including the last three of the year. Young led her team to a sweep of Boston College in the first home ACC series in program history. Her squad then added road series victories against Notre Dame and Virginia Tech before closing the ACC slate with a sweep of Virginia at home to earn the seventh seed in the conference tournament, crushing the preseason prediction that the Blue Devils would finish last in the league.

Prior to being tabbed to build the Duke softball program, Young spent the prior two seasons across town at North Carolina, with her primary responsibilities included coaching the pitchers and catchers. In the spring of 2015, Young helped the Tar Heels to a 37-16 overall record and a berth in the NCAA Tournament after the squad won 24 contests the prior season. Young's pitchers posted a 3.30 earned run average with 234 strikeouts in 335.1 innings pitched.

Young spent the 2012 and 2013 seasons as an assistant coach at Eastern Michigan, where she served as the compliance liaison, recruiting coordinator and managed team travel and the operational budget, among other duties. She helped coach five Academic All-America picks and five player of the week selections during her tenure at Eastern Michigan.

Prior to her stint at EMU, Young was the head coach at Concordia University (NAIA) in Ann Arbor, Mich., from 2008-11. In less than three years, she turned the 2-20 program to a 23-23 record, the second-most wins in a single season since an appearance in the 2002 NAIA National Tournament.

As a player, Young was a three-time All-America selection as a pitcher at the University of Michigan and was named the 2002 Big Ten Pitcher of the Year and 2003 Big Ten Player of the Year. Young graduated from Michigan in 2003 as the all-time strikeout leader (927) and her 88 career wins became the second highest in program history. She also matched the then-program single-season home run record with 13 in 2003.

Young played two years of professional softball, one overseas in Italy and the second year with the Texas Thunder of the National Pro Fastpitch.

### YEAR-BY-YEAR

Year	School	Record	%	Conference	Record	%	Finish
2018	Duke	29-27	.512	Atlantic Coast Conference	13-11	.542	7th
2019	Duke	25-31	.446	Atlantic Coast Conference	11-13	.556	6th
2020	Duke	23-4	.810	Atlantic Coast Conference	1-2	.333	---
2021	Duke	44-12	.786	Atlantic Coast Conference	26-10	.722	3rd
2022	Duke	44-11	.830	Atlantic Coast Conference	19-3	.864	2nd
2023	Duke	48-12	.800	Atlantic Coast Conference	19-5	.792	2nd
2024	Duke	52-9	.852	Atlantic Coast Conference	20-4	.833	1st
<b>Total</b>		<b>265-106</b>	<b>.714</b>		<b>109-48</b>	<b>.694</b>	

### RECORDS

Career	265-106 (.714)
At Duke	Same
ACC	109-48 (.694)
Home	138-40
Away	79-42
Neutral	49-25
ACC Tournament	9-4

### EDUCATION

B.A. General Studies/Criminology  
Michigan '03

### EXPERIENCE

Duke University  
Head Coach (2018 - Pres.)

North Carolina  
Assistant Coach (2014-15)

Eastern Michigan  
Assistant Coach (2012-13)

Concordia University [NAIA]  
Head Coach (2008-11)

# MEET THE COACHES



**OLIVIA WATKINS**  
Associate Head Coach  
Third Season | Western Kentucky

Olivia Watkins was named an assistant coach on July 5, 2022, before being promoted to associate head coach on July 10, 2024. She enters her third season at Duke and will continue to coach the defense and slappers, while overseeing baserunning and the short game.

In her second season with the Blue Devils, Watkins was instrumental in guiding the Blue Devils to another record-setting season in 2024. Under her leadership, the Blue Devils developed three NFCA All-Americans in Claire Davidson, Aminah Vega and Jala Wright. As a team, Duke set a program record with a 52-9 overall ledger, captured its second ACC Championship, made its third straight NCAA Super Regional appearance and advanced to the Women's College World Series for the first time in program history. With her assistance, the Blue Devils were stout on defense, holding opponents scoreless in 20-of-61 games during the 2024 campaign. The 20 shutouts ranked first in the ACC and fifth nationally. In 2023, Watkins was particularly impactful in the development of NFCA All-American D'Auna Jennings, a lefty slapper, who set single-season school records in batting average (.462) and hits (80). For their efforts, Young and her coaching staff were named the 2024 National Fastpitch Coaches Association (NFCA) Southeast Region Staff of the Year.

Watkins comes to Durham after a three-year stint as an assistant coach at Boston College, where she worked on the defense, baserunning and slap-hitting. Under Watkins' guidance, the Eagles saw improvement during each of her three seasons in Chestnut Hill. Watkins was particularly impactful with the development of All-ACC outfielder Ellie Mataya, who batted over .350 in back-to-back seasons. The Eagles became an active team on the basepaths, improving their numbers from 11 stolen bases in the COVID-19 shortened 2020 season, to 21 in 2021 and 40 in 2022.

Prior to her time at Boston College, Watkins spent two seasons as an assistant coach at Dartmouth College, where she coached hitting, baserunning and infield defense. During her time with the Big Green, Dartmouth took home a share of the Ivy League title in 2018.

Watkins began her coaching career as a volunteer assistant coach at the University of Illinois for two seasons (2016-17). Watkins has been active in promoting diversity initiatives, serving as a member of the Boston College Diversity, Equity and Inclusion Committee. For her efforts, Watkins was awarded the 2021 NFCA Natasha Watley Scholarship for Social Change, which is awarded to a Black coach who has created educational or athletic opportunities for their community, has removed and overcome obstacles through social change, or has opened doors for growing the game of fastpitch for Black girls or women.

A 2015 graduate of Western Kentucky University with a degree in interdisciplinary studies and a concentration in science, Watkins had a standout softball career as a Hilltopper. A two-time NFCA All-Region and All-Sun Belt first team honoree, Watkins graduated as the program's all-time leader in batting average (.380) and stolen bases (117). Watkins also spent time in professional softball, as the first Western Kentucky alumni to sign with National Pro Fastpitch (NPF). Watkins played for the Akron Racers, Pennsylvania Rebellion and Houston Scrap Yard Dawgs.



**TAYLOR WIKE**  
Associate Head Coach  
Second Season | North Carolina

Taylor Wike was named an assistant coach on July 1, 2023, before being promoted to associate head coach on July 10, 2024. She enters her second season at Duke and serves as the team's hitting and infield coach.

In her first season with the Blue Devils, Wike was instrumental in guiding the Blue Devils to another record-setting season in 2024. With her guidance, the Blue Devils developed three NFCA All-Americans in Claire Davidson, Aminah Vega and Jala Wright. As a team, Duke set a program record with a 52-9 overall ledger, captured its second ACC Championship, made its third straight NCAA Super Regional appearance and advanced to the Women's College World Series for the first time in program history.

She played a crucial role in the Blue Devils' success on offense in her first season. Under her guidance, Duke maintained one of the nation's best batting averages (.322) and averaged 6.52 runs per game, which ranked eighth in the NCAA. For their efforts, Young and her coaching staff were named the 2024 National Fastpitch Coaches Association (NFCA) Southeast Region Staff of the Year. Wike joined the program after a four-year stint at Charlotte as an assistant coach before being promoted to associate head coach in 2022.

During her time with the 49ers, Wike played an important role in leading the program to its first ever Conference USA East Division title in 2021 and first appearance in the national polls in 2022. Wike's coaching and leadership led to the development of many Charlotte student-athletes, including two-time Conference USA Player of the Year Bailey Vannoy. The fifth-year catcher also became the program's first NFCA All-American, after garnering second team honors in 2022.

Prior to her time at Charlotte, Wike spent one season as a volunteer assistant coach at South Carolina. During her time with the Gamecocks, Wike helped guide them to a 38-19 overall record and reach the NCAA Regional finals for the fourth-straight season.

A 2018 graduate of North Carolina with a degree in Exercise and Sport Science, Wike had a standout softball career as a Tar Heel. The Hiddenite, N.C., native led the Tar Heels to three consecutive NCAA Tournaments from 2015 to 2017. She earned All-ACC honors in each of her four seasons, while starting a staggering 225 games. Wike was named the 2018 ACC Defensive Player of the Year. She was also a finalist for NFCA Freshman of the Year in 2015 and earned All-Southeast Region honors as a junior and a senior.



**PARKER STAGGS**  
Assistant Coach  
First Season | Arkansas

Parker Staggs was named an assistant coach on July 12, 2024 and enters his first season with the Blue Devils. Staggs joins the Blue Devil coaching staff after a six-year stint at Arkansas, where he served as a team manager from 2018-2022 before becoming a graduate student manager in 2023.

A native of Jefferson City, Missouri, Staggs was tasked with various duties to assist the Razorback softball program, including setting up and breaking down practice equipment and throwing live for batting practice and scrimmages. Staggs also assisted on game day by running the Dartfish and Flightscope software to gather analytic data to help the coaching staff.

Staggs has also served as a coach for the Gators, a local softball team in Jefferson City, and is currently assisting with the Kansas City Aces Fastpitch Club. His playing experience involves several men's fastpitch tournaments and includes an invite to the USA Junior Men's National Team selection trials.

He attended Blair Oaks High School in Wardsville, Missouri and learned how to pitch by watching his sister, Payton, during her high school games and lessons. Staggs began his career in team management while in high school and was part of the staff that led the Falcons to the Missouri State High School Activities Association Class 2 State Finals in 2016 and 2017.

A 2022 graduate of Arkansas, Staggs earned his bachelor's degree in sport and recreation management before earning his master's in physical education in 2024.

# 2024 FINAL OVERALL STATISTICS

## 2024 Duke University Softball Overall Statistics (as of May 31, 2024)

Overall Record: 52-9 Conf: 20-4 Home: 28-3 Away: 17-3 Neutral: 7-3

### All games Sorted by Batting Avg

#	Player	AVG	GP-GS	AB	R	H	2B	3B	HR	RBI	TB	SLG%	BB	HBP	SO	GDP	OB%	SF	SH	SB-ATT	PO	A	E	FLD%
7	Davidson, Claire	.436	61-61	179	62	78	20	2	18	67	156	.872	32	10	24	1	.531	5	2	5-8	91	2	1	.989
10	Jennings, D'Auna	.390	61-61	195	52	76	4	2	2	20	90	.462	11	0	30	1	.422	0	4	14-17	77	3	0	1.000
17	Vega, Aminah	.369	59-59	187	43	69	18	1	12	52	125	.668	19	5	13	1	.433	4	1	3-5	85	106	3	.985
3	Torres, Kelly	.349	61-61	175	40	61	6	3	4	37	85	.486	16	14	12	3	.433	5	3	7-10	294	40	1	.997
5	Burgess, Amiah	.331	56-40	118	32	39	5	3	4	32	62	.525	20	3	22	1	.440	0	0	6-6	47	3	0	1.000
29	Tapia, Gisele	.287	61-61	174	30	50	7	1	3	37	68	.391	25	2	8	2	.383	0	4	0-0	367	12	4	.990
13	Frelick, Francesca	.273	58-46	128	27	35	5	0	8	42	64	.500	15	7	11	0	.361	8	6	1-3	121	11	1	.992
4	Gold, Ana	.269	61-61	182	47	49	4	3	9	44	86	.473	28	6	24	0	.377	4	3	10-12	50	98	11	.931
25	Baker, Jada	.241	61-61	158	29	38	5	0	4	23	55	.348	9	4	21	0	.295	2	5	3-4	57	87	12	.923
11	Zampa, Kelsey	.250	35-11	32	9	8	0	0	1	7	11	.344	3	1	6	0	.333	0	1	6-6	13	3	1	.941
23	Goddard, Sarah	.235	42-25	81	11	19	3	1	2	10	30	.370	2	1	17	0	.259	1	5	1-1	24	2	1	.963
99	Terrell, Aleyah	.200	39-1	15	14	3	0	0	0	1	3	.200	1	0	3	0	.250	0	0	2-2	3	0	0	1.000
22	Le, Linh	.143	7-1	7	1	1	0	0	0	1	1	.143	0	0	1	0	.143	0	0	0-0	6	0	0	1.000
15	Walker, Lillie	.000	28-1	1	0	0	0	0	0	0	0	.000	0	0	1	0	.000	0	0	0-0	1	9	2	.833
14	Wright, Jala	.000	34-26	0	1	0	0	0	0	0	0	.000	0	0	0	0	.000	0	0	0-0	2	26	2	.933
<b>Totals</b>		<b>.322</b>	<b>61-61</b>	<b>1632</b>	<b>398</b>	<b>526</b>	<b>77</b>	<b>16</b>	<b>67</b>	<b>373</b>	<b>836</b>	<b>.512</b>	<b>181</b>	<b>53</b>	<b>193</b>	<b>9</b>	<b>.401</b>	<b>29</b>	<b>34</b>	<b>58-74</b>	<b>1242</b>	<b>427</b>	<b>42</b>	<b>.975</b>
<b>Opponents</b>		<b>.187</b>	<b>61-61</b>	<b>1505</b>	<b>119</b>	<b>282</b>	<b>39</b>	<b>6</b>	<b>30</b>	<b>111</b>	<b>423</b>	<b>.281</b>	<b>115</b>	<b>18</b>	<b>430</b>	<b>4</b>	<b>.252</b>	<b>6</b>	<b>12</b>	<b>23-34</b>	<b>1170</b>	<b>450</b>	<b>65</b>	<b>.961</b>

LOB: Team (345), Opp (291) DPs Turned: Team (16), Opp (16) IBB: Team (1), Torres (1), Opp (1)

### All games Sorted by Earned Run Avg

#	Player	ERA	W-L	APP	GS	CG	SHO	SV	IP	H	R	ER	BB	SO	2B	3B	HR	B/AVG	WP	HP	BK	SFA	SHA
19	Curd, Cassidy	1.31	13-4	32	23	3	2-6	3	128.1	67	27	24	31	156	10	3	10	.151	4	5	0	1	5
14	Wright, Jala	1.50	19-3	34	26	8	5-5	2	154.1	101	43	33	49	189	10	1	10	.181	15	4	0	2	3
15	Walker, Lillie	1.98	12-1	28	1	0	0-4	4	63.2	51	23	18	12	40	7	2	7	.218	1	5	0	1	3
16	Drogemuller, Dani	2.31	5-0	15	7	3	2-3	0	42.1	43	17	14	14	32	6	0	1	.249	3	3	0	1	1
2	Garner-MacKinnon, Sophie	2.49	3-1	9	4	2	1-4	1	25.1	20	9	9	9	13	6	0	2	.208	0	1	0	1	0
<b>Totals</b>		<b>1.66</b>	<b>52-9</b>	<b>118</b>	<b>61</b>	<b>16</b>	<b>20</b>	<b>10</b>	<b>414.0</b>	<b>282</b>	<b>119</b>	<b>98</b>	<b>115</b>	<b>430</b>	<b>39</b>	<b>6</b>	<b>30</b>	<b>.187</b>	<b>23</b>	<b>18</b>	<b>0</b>	<b>6</b>	<b>12</b>
<b>Opponents</b>		<b>6.28</b>	<b>9-52</b>	<b>141</b>	<b>61</b>	<b>12</b>	<b>1</b>	<b>4</b>	<b>390.0</b>	<b>526</b>	<b>398</b>	<b>350</b>	<b>181</b>	<b>193</b>	<b>77</b>	<b>16</b>	<b>67</b>	<b>.322</b>	<b>19</b>	<b>53</b>	<b>0</b>	<b>29</b>	<b>34</b>

PB: Team (11), Totals (11), Torres (9), Frelick (2), Opp (20) Pickoffs: Team (0), Totals , Opp (0) SBA/ATT: Totals (46-68), Torres (14-23), Wright (14-20), Frelick (9-11), Drogemuller (4-4), Walker (3-6), Curd (2-4)

PLAYER PROFILES



#2 SOPHIE GARNER-MACKINNON

Junior || P || 5-8 || R/R || West Hartford, Conn.

CAREER PITCHING STATISTICS

Year	ERA	W-L	APP	GS	CG	SHO	SV	IP	H	R	ER	BB	SO	BAVG
2023	2.05	5-1	18	5	0	0	1	44.1	36	17	13	18	20	.216
2024	2.49	3-1	9	4	2	1	1	25.1	20	9	9	9	13	.208
2025	--	--	--	--	--	--	--	--	--	--	--	--	--	--
TOTAL	2.21	8-2	27	9	2	1	2	69.2	56	26	22	27	33	.213

CAREER HIGHS

Innings Pitched	5.0 (3x)	last at UNC Greensboro	April 17, 2024
Strikeouts	4	vs. Longwood	April 24, 2024

2025 PITCHING GAME-BY-GAME

Date	Opponent	GS	IP	H	R	ER	BB	SO	WP	HBP	W-L	SV	NP
------	----------	----	----	---	---	----	----	----	----	-----	-----	----	----



#4 ANA GOLD

Senior || INF || 5-7 || R/R || Ballston Spa, N.Y.

CAREER STATISTICS

Year	Avg	GP-GS	AB	R	H	2B	3B	HR	RBI	SLG%	BB	HBP	SO	OBP	SB
2022	.311	53-51	135	38	42	12	1	10	36	.637	15	6	34	.399	13-15
2023	.313	59-59	163	53	51	8	1	19	56	.724	27	10	29	.436	10-11
2024	.269	61-61	182	47	49	4	3	9	44	.473	28	6	24	.377	10-12
2025	--	--	--	--	--	--	--	--	--	--	--	--	--	--	--
TOTAL	.296	173-171	480	138	142	24	5	38	136	.604	70	22	87	.403	33-38

CAREER HIGHS

Hits	4	vs. Michigan State	February 24, 2024
Runs	4 (2x)	last vs. North Dakota State	February 14, 2024
Home Runs	2 (4x)	last vs. North Dakota State	February 14, 2024
RBI	8	vs. North Dakota State	February 14, 2024
Doubles	2 (2x)	last vs. Clemson	March 19, 2022
Stolen Bases	2	vs. California Baptist	February 11, 2022

2025 GAME-BY-GAME

Date	Opponent	GS	AB	R	H	RBI	2B	3B	HR	BB	SB	SH	SF	K	E
------	----------	----	----	---	---	-----	----	----	----	----	----	----	----	---	---

PLAYER PROFILES



#5 AMIAH BURGESS

Sophomore || OF || 5-7 || L/R || League City, Texas

CAREER HITTING STATISTICS

Year	Avg	GP-GS	AB	R	H	2B	3B	HR	RBI	SLG%	BB	HBP	SO	OBP	SB
2024	.331	56-40	118	32	39	5	3	4	32	.525	20	3	22	.440	6-6
2025	--	--	--	--	--	--	--	--	--	--	--	--	--	--	--
TOTAL	.331	56-40	118	32	39	5	3	4	32	.525	20	3	22	.440	6-6

CAREER HIGHS

2025 GAME-BY-GAME

Date	Opponent	GS	AB	R	H	RBI	2B	3B	HR	BB	SB	SH	SF	K	E
------	----------	----	----	---	---	-----	----	----	----	----	----	----	----	---	---



#6 AVA BRADSHAW

Freshman || P || 5-9 || R/R || South Lyon, Mich.

CAREER PITCHING STATISTICS

Year	ERA	W-L	APP	GS	CG	SHO	SV	IP	H	R	ER	BB	SO	BAVG
2025	--	--	--	--	--	--	--	--	--	--	--	--	--	--
TOTAL	0.00	0-0	0	0	0	0	0	0.0	0	0	0	0	0	0

CAREER HIGHS

2025 PITCHING GAME-BY-GAME

Date	Opponent	GS	IP	H	R	ER	BB	SO	WP	HBP	W-L	SV	NP
------	----------	----	----	---	---	----	----	----	----	-----	-----	----	----

PLAYER PROFILES



#8 GABRIELLA MIKE

Freshman || P/UTL || 5-7 || R/R || Altamonte Springs, Fla.

CAREER HITTING STATISTICS

Year	Avg	GP-GS	AB	R	H	2B	3B	HR	RBI	SLG%	BB	HBP	SO	OBP	SB
2025	--	--	--	--	--	--	--	--	--	--	--	--	--	--	--
TOTAL	.000	0-0	0	0	0	0	0	0	0	.000	0	0	0	.000	0-0

CAREER PITCHING STATISTICS

Year	ERA	W-L	APP	GS	CG	SHO	SV	IP	H	R	ER	BB	SO	BAVG
2025	--	--	--	---	--	--	--	--	--	--	--	--	--	--
TOTAL	0.00	0-0	0	0	0	0	0	0.0	0	0	0	0	0	.000

CAREER HIGHS

2025 HITTING GAME-BY-GAME

Date	Opponent	GS	AB	R	H	RBI	2B	3B	HR	BB	SB	SH	SF	K	E
------	----------	----	----	---	---	-----	----	----	----	----	----	----	----	---	---



#9 JESSICA OAKLAND

Junior || INF || 5-9 || R/R || San Jose, Calif.

CAREER STATISTICS

Year	Avg	GP-GS	AB	R	H	2B	3B	HR	RBI	SLG%	BB	HBP	SO	OBP	SB
2023 *	.322	57-57	177	41	57	8	1	14	45	.616	33	3	30	.435	4-6
2024 *	.452	53-53	168	70	76	19	0	20	58	.923	44	0	16	.563	3-4
2025	--	--	--	--	--	--	--	--	--	--	--	--	--	--	--
TOTAL	.386	110-110	345	111	133	27	1	34	103	.765	77	3	46	.499	7-10

\* at Minnesota

CAREER HIGHS

Hits	4 (2x) *	last at Illinois	March 30, 2024
Runs	4 (3x) *	last vs. Rutgers	April 20, 2024
Home Runs	3 *	last at Illinois	March 30, 2024
RBI	5 (3x) *	last vs. Wisconsin	April 17, 2024

\* at Minnesota

2025 GAME-BY-GAME

Date	Opponent	GS	AB	R	H	RBI	2B	3B	HR	BB	SB	SH	SF	K	E
------	----------	----	----	---	---	-----	----	----	----	----	----	----	----	---	---

PLAYER PROFILES



#10 D'AUNA JENNINGS

Junior || OF || 5-6 || L/R || Houston, Texas

CAREER STATISTICS

Year	Avg	GP-GS	AB	R	H	2B	3B	HR	RBI	SLG%	BB	HBP	SO	OBP	SB
2023	.462	59-58	173	48	80	6	2	0	16	.520	8	2	25	.492	21-24
2024	.390	61-61	195	52	76	4	2	2	20	.462	11	0	30	.422	14-17
2025	--	--	--	--	--	--	--	--	--	--	--	--	--	--	--
TOTAL	.424	120-119	368	100	156	10	4	2	36	.520	19	2	55	.455	35-41

CAREER HIGHS

Hits	4 (6x)	last vs. Elon	Feb. 25, 2024
Runs	4	vs. North Dakota State	Feb. 14, 2024
Stolen Bases	3	East Carolina	April 12, 2023
RBI	4	vs. Gardner-Webb	April 23, 2024

2025 GAME-BY-GAME

Date	Opponent	GS	AB	R	H	RBI	2B	3B	HR	BB	SB	SH	SF	K	E
------	----------	----	----	---	---	-----	----	----	----	----	----	----	----	---	---



#11 HAILEY SHULER

Freshman || P/INF || 5-8 || R/R || Lake Balboa, Calif.

CAREER HITTING STATISTICS

Year	Avg	GP-GS	AB	R	H	2B	3B	HR	RBI	SLG%	BB	HBP	SO	OBP	SB
2025	--	--	--	--	--	--	--	--	--	--	--	--	--	--	--
TOTAL	.000	0-0	0	0	0	0	0	0	0	.000	0	0	0	.000	0-0

CAREER PITCHING STATISTICS

Year	ERA	W-L	APP	GS	CG	SHO	SV	IP	H	R	ER	BB	SO	BAVG
2025	--	--	--	---	--	--	--	--	--	--	--	--	--	--
TOTAL	0.00	0-0	0	0	0	0	0	0.0	0	0	0	0	0	.000

CAREER HIGHS

2025 HITTING GAME-BY-GAME

Date	Opponent	GS	AB	R	H	RBI	2B	3B	HR	BB	SB	SH	SF	K	E
------	----------	----	----	---	---	-----	----	----	----	----	----	----	----	---	---

PLAYER PROFILES



#13 DAKOTA FARMER

Sophomore || C || 5-6 || R/R || Leander, Texas

CAREER STATISTICS

Year	Avg	GP-GS	AB	R	H	2B	3B	HR	RBI	SLG%	BB	HBP	SO	OBP	SB
2024 *	.400	9-0	10	3	4	0	0	0	0	.400	0	0	3	.400	0-0
2025	--	--	--	--	--	--	--	--	--	--	--	--	--	--	--
TOTAL	.400	9-0	10	3	4	0	0	0	0	.400	0	0	3	.400	0-0

\* at Penn

CAREER HIGHS

Hits	2 (3x) *	last vs. Brown	May 4, 2024
Runs	2	vs. Drexel	April 17, 2024
RBI	3	vs. Brown	May 4, 2024

2025 GAME-BY-GAME

Date	Opponent	GS	AB	R	H	RBI	2B	3B	HR	BB	SB	SH	SF	K	E
------	----------	----	----	---	---	-----	----	----	----	----	----	----	----	---	---



#16 DANI DROGEMULLER

Graduate Student || P || 5-9 || R/R || Frankfort, Ill.

CAREER STATISTICS

Year	ERA	W-L	APP	GS	CG	SHO	SV	IP	H	R	ER	BB	SO	BAVG
2021 *	4.05	3-3	10	4	2	0	0	38.0	44	33	22	18	35	.277
2022 *	3.51	8-13	28	21	11	1	1	135.2	130	93	68	65	147	.244
2023 *	4.42	8-14	33	23	10	0	4	136.1	161	100	86	64	124	.288
2024	2.31	5-0	15	7	3	2	0	42.1	43	17	14	14	32	.249
2025	--	--	--	--	--	--	--	--	--	--	--	--	--	--
TOTAL	3.55	24-30	86	55	26	3	5	352.2	378	243	190	161	338	.268

\* at Pittsburgh

CAREER HIGHS

Innings Pitched	8.0 (2x) *	last at USC Upstate	February 26, 2022
Hits	15 *	last vs. Duke	April 29, 2023
Earned Runs	11 *	last vs. Duke	April 29, 2023
Strikeouts	12 *	vs. USC Upstate	February 26, 2022
Pitches Thrown	145 *	at Clemson *	April 21, 2023

2025 GAME-BY-GAME

Date	Opponent	GS	IP	H	R	ER	BB	SO	WP	HBP	W-L	SV	NP
------	----------	----	----	---	---	----	----	----	----	-----	-----	----	----

PLAYER PROFILES



#17 AMINAH VEGA

Junior || INF || 5-7 || L/R || DeBary, Fla.

CAREER STATISTICS

Year	Avg	GP-GS	AB	R	H	2B	3B	HR	RBI	SLG%	BB	HBP	SO	OBP	SB
2023	.371	60-59	178	40	66	11	3	12	50	.669	13	3	26	.418	9-11
2024	.369	59-59	187	43	69	18	1	12	52	.668	19	5	13	.433	3-5
2025	--	--	--	--	--	--	--	--	--	--	--	--	--	--	--
TOTAL	.370	119-118	365	83	135	29	4	24	102	.668	32	8	39	.426	12-16

CAREER HIGHS

Hits	4	vs. VirginiaTech	March 29, 2024
Runs	3	vs. Villanova	Feb. 25, 2024
RBI	5	at Clemson	Apr. 12, 2024
Doubles	2 (2x)	last vs. Virginia Tech	March 29, 2024
Home Runs	2	vs. Virginia Tech	March 29, 2024

2025 GAME-BY-GAME

Date	Opponent	GS	AB	R	H	RBI	2B	3B	HR	BB	SB	SH	SF	K	E
------	----------	----	----	---	---	-----	----	----	----	----	----	----	----	---	---



#19 CASSIDY CURD

Junior || P || 5-7 || L/L || Port St. Lucie, Fla.

CAREER STATISTICS

Year	ERA	W-L	APP	GS	CG	SHO	SV	IP	H	R	ER	BB	SO	BAVG
2023	1.65	18-3	35	20	5	3	1	127.1	64	42	30	52	159	.146
2024	1.31	13-4	32	23	3	2	3	128.1	67	27	24	31	156	.151
2025	--	--	--	--	--	--	--	--	--	--	--	--	--	--
TOTAL	1.48	31-7	67	43	8	5	4	255.2	131	69	54	83	315	.149

CAREER HIGHS

Innings Pitched	8.1	at Missouri	May 26, 2024
Strikeouts	12	vs. North Carolina	April 6, 2024
Pitches Thrown	115	at UNCW	April 4, 2023

2025 PITCHING GAME-BY-GAME

Date	Opponent	GS	IP	H	R	ER	BB	SO	WP	HBP	W-L	SV	NP
------	----------	----	----	---	---	----	----	----	----	-----	-----	----	----

PLAYER PROFILES



#22 LINH LE

Sophomore || INF || 5-9 || R/R || Milpitas, Calif.

CAREER STATISTICS

Year	Avg	GP-GS	AB	R	H	2B	3B	HR	RBI	SLG%	BB	HBP	SO	OBP	SB
2024	.143	7-1	7	1	1	0	0	0	1	.143	0	0	1	.143	0-0
2025	--	--	--	--	--	--	--	--	--	--	--	--	--	--	--
TOTAL	.000	0-0	0	0	0	0	0	0	0	.000	0	0	0	.000	0-0

CAREER HIGHS

Hits	1	vs. Gardner-Webb	April 23, 2024
Runs	1	vs. Gardner-Webb	April 23, 2024
RBI	1	vs. Michigan State	April 24, 2024

2025 GAME-BY-GAME

Date	Opponent	GS	IP	H	R	ER	BB	SO	WP	HBP	W-L	SV	NP
------	----------	----	----	---	---	----	----	----	----	-----	-----	----	----



#24 THESSA MALAU'ULU

Graduate Student || UTL || 5-7 || L/R || Long Beach, Calif.

CAREER STATISTICS

Year	Avg	GP-GS	AB	R	H	2B	3B	HR	RBI	SLG%	BB	HBP	SO	OBP	SB
2021 *	.255	40-27	55	17	14	2	0	0	5	.291	8	0	3	.349	2
2022 *	.290	42-30	69	17	20	3	0	0	5	.333	4	2	7	.347	1
2023 *	DNP	--	--	--	--	--	--	--	--	--	--	--	--	--	--
2024 *	.294	51-46	119	28	35	5	0	0	15	.336	14	3	16	.377	1
2025	--	--	--	--	--	--	--	--	--	--	--	--	--	--	--
TOTAL	.284	133-103	243	62	69	10	0	0	25	.325	26	5	26	.324	4-6

\* at UCLA

CAREER HIGHS

Hits	3 (2x) *	last vs. Georgia	May 24, 2024
Runs	3 *	vs. San Jose State	March 7, 2021
Double	2 *	vs. San Jose State	March 7, 2021
RBI	2 (5x) *	last vs. Utah	March 10, 2024

\* at UCLA

2025 GAME-BY-GAME

Date	Opponent	GS	AB	R	H	RBI	2B	3B	HR	BB	SB	SH	SF	K	E
------	----------	----	----	---	---	-----	----	----	----	----	----	----	----	---	---

PLAYER PROFILES



#25 JADA BAKER

Redshirt-Junior || INF || 5-4 || R/R || Longwood, Fla.

CAREER STATISTICS

Year	Avg	GP-GS	AB	R	H	2B	3B	HR	RBI	SLG%	BB	HBP	SO	OBP	SB
2022	--	--	--	--	--	--	--	--	--	--	--	--	--	--	--
2023	.237	53-52	93	17	22	2	0	1	8	.290	11	2	16	.330	2-2
2024	.241	61-61	158	29	38	5	0	4	23	.348	9	4	21	.295	3-4
2025	--	--	--	--	--	--	--	--	--	--	--	--	--	--	--
TOTAL	.239	114-113	251	46	60	7	0	5	31	.327	20	6	37	.308	5-6

CAREER HIGHS

Hits	3	vs. Elon	Feb. 25, 2024
RBI	4	vs. Elon	Feb. 25, 2024
Runs	3 (2x)	last vs. Iowa State	Feb. 9, 2024

2025 GAME-BY-GAME

Date	Opponent	GS	AB	R	H	RBI	2B	3B	HR	BB	SB	SH	SF	K	E
------	----------	----	----	---	---	-----	----	----	----	----	----	----	----	---	---



#27 KK MATHIS

Junior || INF || 5-8 || R/R || West Chester, Ohio

CAREER STATISTICS

Year	Avg	GP-GS	AB	R	H	2B	3B	HR	RBI	SLG%	BB	HBP	SO	OBP	SB
2023 *	.336	47-47	143	32	48	13	0	12	41	.678	10	5	19	.396	2-3
2024 *	.331	52-52	166	33	55	13	0	10	38	.590	23	2	22	.417	8-10
2025	--	--	--	--	--	--	--	--	--	--	--	--	--	--	--
TOTAL	.333	99-99	309	65	103	26	0	22	79	.631	33	7	41	.407	10-13

\* at James Madison

CAREER HIGHS

Hits	5 *	at NC State	Feb. 26, 2023
Runs	5 *	at NC State	Feb. 26, 2023
RBI	5 *	vs. Radford	March 8, 2024
Doubles	2 *	last vs. Georgia Southern	March 24, 2023

\* at James Madison

2025 GAME-BY-GAME

Date	Opponent	GS	AB	R	H	RBI	2B	3B	HR	BB	SB	SH	SF	K	E
------	----------	----	----	---	---	-----	----	----	----	----	----	----	----	---	---

PLAYER PROFILES



#32 KAIRI RODRIGUEZ

Redshirt-Sophomore || C || 5-4 || R/R || West Palm Beach, Fla.

CAREER STATISTICS

Year	Avg	GP-GS	AB	R	H	2B	3B	HR	RBI	SLG%	BB	HBP	SO	OBP	SB
2023	.232	36-13	56	11	13	4	0	3	12	.464	9	2	14	.343	0-0
2024	DNP	--	--	--	--	--	--	--	--	--	--	--	--	--	--
2025	--	--	--	--	--	--	--	--	--	--	--	--	--	--	--
TOTAL	.232	36-13	56	11	13	4	0	3	12	.464	9	2	14	.343	0-0

CAREER HIGHS

Hits	3	vs. UNC Greensboro	April 19, 2023
Runs	2 (2x)	last vs. Louisville	March 10, 2023
RBI	2	at Charlotte	March 8, 2023

2025 GAME-BY-GAME

Date	Opponent	GS	AB	R	H	RBI	2B	3B	HR	BB	SB	SH	SF	K	E
------	----------	----	----	---	---	-----	----	----	----	----	----	----	----	---	---



#42 BROOKLINN THOMAS

Freshman || UTL || 5-9 || R/R || Durham, N.C.

CAREER STATISTICS

Year	Avg	GP-GS	AB	R	H	2B	3B	HR	RBI	SLG%	BB	HBP	SO	OBP	SB
2025	--	--	--	--	--	--	--	--	--	--	--	--	--	--	--
TOTAL	.000	0-0	0	0	0	0	0	0	0	.000	0	0	0	.000	0-0

CAREER HIGHS

2025 GAME-BY-GAME

Date	Opponent	GS	AB	R	H	RBI	2B	3B	HR	BB	SB	SH	SF	K	E
------	----------	----	----	---	---	-----	----	----	----	----	----	----	----	---	---



#99 ALEYAH TERRELL

Junior || OF || 5-4 || L/R || Greensboro, N.C.

CAREER STATISTICS

Year	Avg	GP-GS	AB	R	H	2B	3B	HR	RBI	SLG%	BB	HBP	SO	OBP	SB
2023 *	.219	30-24	73	7	16	1	1	0	3	.260	7	0	11	.288	4-6
2024	.200	39-1	15	14	3	0	0	0	1	.200	1	0	3	.250	2-2
2025	--	--	--	--	--	--	--	--	--	--	--	--	--	--	--
TOTAL	.210	69-25	88	21	19	1	1	0	4	.230	8	0	14	.269	6-8

\* at Boston College

CAREER HIGHS

Hits	2 (3x) *	last at Providence	April 19, 2023
Runs	2 *	vs. UConn	April 11, 2023

\* at Boston College

2025 GAME-BY-GAME

Date	Opponent	GS	AB	R	H	RBI	2B	3B	HR	BB	SB	SH	SF	K	E
------	----------	----	----	---	---	-----	----	----	----	----	----	----	----	---	---

# LAST TIME IT HAPPENED...

## INDIVIDUAL BATTING SUPERLATIVES

4 hits in a game.....	A. Vega vs. #15 Virginia Tech (3/29/24)
4 runs in a game.....	D. Jennings/A.Gold vs. North Dakota State (2/14/24)
3 doubles in a game.....	J. Kavel vs. Kansas (3/2/19)
2 triples in a game.....	D. Davis vs. Notre Dame (2/21/21)
2 home runs in a game.....	C. Davidson vs. North Carolina (4/7/24)
3 home runs in a game.....	J. Kavel at James Madison [1] (4/12/22)
Back-to-back home runs.....	C. Davidson & A. Vega vs. Morgan State (5/17/24)
Grand slam in a game.....	A. Vega at #19 Clemson (4/12/24)
4 RBI in a game.....	C. Davidson vs. Morgan State (5/17/24)
5 RBI in a game.....	A. Vega at #19 Clemson (4/12/24)
6 RBI in a game.....	F. Frelick vs. Michigan State (2/24/24)
7 RBI in a game.....	K. Jackson vs. Rutgers (2/15/20)
8 RBI in a game.....	G. Tapia vs. Michigan State (2/24/24)
3 stolen bases in a game.....	D. Jennings vs. East Carolina (4/12/23)
3 walks in a game.....	A. Vega vs. Virginia (4/19/24)

## PITCHING SUPERLATIVES

No-hitter (individual).....	C. Curd vs. Clemson (2-0) (5/12/23)
No-hitter (combined).....	C. Davidson/S. Garner-MacKinnon vs. Elon (4/10/23)
One-hitter.....	C. Curd/L.Walker vs. NC State (4/27/24)
Perfect game.....	N/A
Complete game shutout.....	J. Wright vs. Boston College (5/9/24)
8 K's.....	C. Curd at #10 Missouri (5/24/24)
9 K's.....	J. Wright vs. South Carolina (5/18/24)
10 K's.....	C. Curd vs. Louisville (3/23/24)
11 K's.....	C.Curd at Longwood (4/26/22)
12 K's.....	C. Curd vs. North Carolina (4/6/24)
13 K's (combined).....	C. Curd/J. Wright vs. Arkansas (2/17/23)
14 K's.....	J. Wright vs. Virginia (4/19/24)
14 K's (combined).....	C. Curd/J. Wright vs. Arkansas (2/17/23)
15 K's.....	P. St. George vs. NC State [2] (3/11/22)
15 K's (combined).....	C. Curd/J. Wright vs. Arkansas (2/17/23)
16 K's.....	N/A
16 K's (combined).....	P. St. George/C. Davidson vs. UConn (3/7/21)
17 K's.....	J. Wright vs. Boston College (5/9/24)

## FIELDING SUPERLATIVES

2 double plays turned.....	vs. Florida State (5/13/23)
3 errors in a game.....	vs. Villanova (2/25/24)
4 errors in a game.....	at #16 Florida State (3/17/24)
5 errors in a game.....	at Notre Dame (4/14/18)
10-15 assists in a game.....	13 vs. Morgan State (5/17/24)
16-20 assists in a game.....	18 at Clemson (3/28/21)
25+ assists in a game.....	25 vs. Western Kentucky (5/22/21)
20-25 putouts in a game.....	21 at #10 Missouri (5/25/24)
25-30 putouts in a game.....	27 at #10 Missouri (5/26/24)
31+ putouts in a game.....	36 vs. Virginia (4/19/24)

## TEAM SUPERLATIVES

Won 20+ straight games.....	21 (2/9/24-3/15/24)
Win vs. ranked team.....	4-3 at #10 Missouri (5/26/24)
Home series win vs. ACC team.....	vs. North Carolina (4/5-4/7/24)
Home series sweep vs. ACC team.....	vs. North Carolina (4/5-4/7/24)
Road series win vs. ACC team.....	at NC State (4/26/24-4/28/24)
Road series sweep vs. ACC team.....	at NC State (4/26/24-4/28/24)
Extra innings victory.....	at #10 Missouri (4-3 [F/9], 5/26/24)
Extra innings loss.....	at Louisville (1-2 [F/8], 3/23/24)
Shutout win.....	vs. South Carolina (8-0 [F/6], 5/9/24)
Run ruled.....	vs. South Carolina (8-0 [F/6], 5/9/24)
Was no hit.....	N/A
2 home runs in a game.....	vs. Morgan State [G. Tapia/A. Vega/C. Davidson] (5/17/24)
3 home runs in a game.....	vs. Morgan State [G. Tapia/A. Vega/C. Davidson] (5/17/24)
4 home runs in a game.....	at Liberty. [S. Goddard/K. Torres/A. Vega/J.Baker] (3/12/24)
5+ home runs in a game.....	10 at James Madison [1] (4/12/22)
4 home runs in an inning.....	at James Madison [1] (4/12/22)
5 home runs in an inning.....	at James Madison [1] (4/12/22)
Scored 10-14 runs.....	10 vs. South Carolina (5/19/24)
Scored 15-19 runs.....	16 at UNC Greensboro (4/17/24)
Scored 20-25 runs.....	22 vs. Michigan State (2/24/24)
Scored 10 runs in an inning.....	10 at UNC Greensboro (4/17/24)
Scored 11+ runs in an inning.....	14 vs. Michigan State (2/24/24)
Had 10-14 hits.....	13 vs. South Carolina (5/19/24)
Had 15-20 hits.....	15 vs. Gardner-Webb (4/23/24)
Had 21-25 hits.....	24 at James Madison [1] (4/12/22)
Walked 5-9 times.....	6 vs. South Carolina (5/19/24)
Walked 10 times.....	vs. Indiana (2/15/20)
10-14 RBI in a game.....	13 vs. Gardner-Webb (4/23/24)
15-19 RBI in a game.....	15 at UNC Greensboro (4/17/24)
20-25 RBI in a game.....	23 vs. Michigan State (2/24/24)
4 doubles in a game.....	4 at UNC Greensboro (4/17/24)
2 triples in a game.....	2 vs. Syracuse (3/3/24)
Stole 5 bases.....	5 at East Carolina (4/9/24)
Stole 6 bases.....	6 vs. NC Central (2/19/19)
Played 8+ innings.....	12 vs. Virginia (4/19/24)
Played 9+ innings.....	9 at #10 Missouri (5/26/24)
Played 10+ innings.....	10 vs. Clemson (5/10/24)
Played 11+ innings.....	12 vs. Virginia (4/19/24)

## BY THE NUMBERS...

HITTING STREAKS	LONGEST	CURRENT
Ana Gold .....	0 .....	0
Amiah Burgess .....	0 .....	0
Gabriella Mike .....	0 .....	0
D'Auna Jennings .....	0 .....	0
Hailey Shuler .....	0 .....	0
Dakota Farmer .....	0 .....	0
Aminah Vega .....	0 .....	0
Linh Le .....	0 .....	0
Thessa Malau'ulu .....	0 .....	0
Jada Baker .....	0 .....	0
KK Mathis .....	0 .....	0
Kairi Rodriguez .....	0 .....	0
Brooklinn Thomas .....	0 .....	0
Aleyah Terrell .....	0 .....	0

REACHED BASE .....	LONGEST .....	CURRENT
Ana Gold .....	0 .....	0
Amiah Burgess .....	0 .....	0
Gabriella Mike .....	0 .....	0
D'Auna Jennings .....	0 .....	0
Hailey Shuler .....	0 .....	0
Dakota Farmer .....	0 .....	0
Aminah Vega .....	0 .....	0
Linh Le .....	0 .....	0
Thessa Malau'ulu .....	0 .....	0
Jada Baker .....	0 .....	0
KK Mathis .....	0 .....	0
Kairi Rodriguez .....	0 .....	0
Brooklinn Thomas .....	0 .....	0
Aleyah Terrell .....	0 .....	0

MULTIPLE-HIT GAMES	2	3	4	5+	Total
Ana Gold .....	0 .....	0 .....	0 .....	0 .....	0
Amiah Burgess .....	0 .....	0 .....	0 .....	0 .....	0
Gabriella Mike .....	0 .....	0 .....	0 .....	0 .....	0
D'Auna Jennings .....	0 .....	0 .....	0 .....	0 .....	0
Hailey Shuler .....	0 .....	0 .....	0 .....	0 .....	0
Dakota Farmer .....	0 .....	0 .....	0 .....	0 .....	0
Aminah Vega .....	0 .....	0 .....	0 .....	0 .....	0
Linh Le .....	0 .....	0 .....	0 .....	0 .....	0
Thessa Malau'ulu .....	0 .....	0 .....	0 .....	0 .....	0
Jada Baker .....	0 .....	0 .....	0 .....	0 .....	0
KK Mathis .....	0 .....	0 .....	0 .....	0 .....	0
Kairi Rodriguez .....	0 .....	0 .....	0 .....	0 .....	0
Brooklinn Thomas .....	0 .....	0 .....	0 .....	0 .....	0
Aleyah Terrell .....	0 .....	0 .....	0 .....	0 .....	0
<b>TEAM</b>	<b>0 .....</b>	<b>0 .....</b>	<b>0 .....</b>	<b>0 .....</b>	<b>0</b>

MULTIPLE-RBI GAMES	2	3	4	5+	Total
Ana Gold .....	0 .....	0 .....	0 .....	0 .....	0
Amiah Burgess .....	0 .....	0 .....	0 .....	0 .....	0
Gabriella Mike .....	0 .....	0 .....	0 .....	0 .....	0
D'Auna Jennings .....	0 .....	0 .....	0 .....	0 .....	0
Hailey Shuler .....	0 .....	0 .....	0 .....	0 .....	0
Dakota Farmer .....	0 .....	0 .....	0 .....	0 .....	0
Aminah Vega .....	0 .....	0 .....	0 .....	0 .....	0
Linh Le .....	0 .....	0 .....	0 .....	0 .....	0
Thessa Malau'ulu .....	0 .....	0 .....	0 .....	0 .....	0
Jada Baker .....	0 .....	0 .....	0 .....	0 .....	0
KK Mathis .....	0 .....	0 .....	0 .....	0 .....	0
Kairi Rodriguez .....	0 .....	0 .....	0 .....	0 .....	0
Brooklinn Thomas .....	0 .....	0 .....	0 .....	0 .....	0
Aleyah Terrell .....	0 .....	0 .....	0 .....	0 .....	0
<b>TEAM</b>	<b>0 .....</b>	<b>0 .....</b>	<b>0 .....</b>	<b>0 .....</b>	<b>0</b>



## TV & RADIO ROSTER

# DUKE<sup>®</sup>

## SOFTBALL

# TV ROSTER



**2**

**SOPHIE GARNER-MACKINNON**

P • Jr. • R/R • 5-8  
West Hartford, Conn.



**4**

**ANA GOLD**

INF • Sr. • R/R • 5-7  
Ballston Spa, N.Y.



**5**

**AMIAH BURGESS**

OF • So. • L/R • 5-7  
League City, Texas



**6**

**AVA BRADSHAW**

P • Fr. • R/R • 5-9  
South Lyon, Mich.



**8**

**GABRIELLA MIKE**

P/UTL • Fr. • R/R • 5-7  
Altamonte Springs, Fla.



**9**

**JESSICA OAKLAND**

INF • Jr. • R/R • 5-9  
San Jose, Calif.



**10**

**D'AUNA JENNINGS**

OF • Jr. • L/R • 5-6  
Houston, Texas



**11**

**HAILEY SHULER**

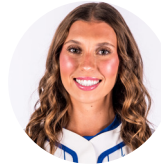
P/INF • Fr. • R/R • 5-8  
Lake Balboa, Calif.



**13**

**DAKOTA FARMER**

C • So. • R/R • 5-6  
Leander, Texas



**16**

**DANI DROGEMULLER**

P • Gr. • R/R • 5-9  
Frankfort, Ill.



**17**

**AMINAH VEGA**

INF • Jr. • L/R • 5-7  
DeBary, Fla.



**19**

**CASSIDY CURD**

P • Jr. • L/L • 5-7  
Port St. Lucie, Fla.



**22**

**LINH LE**

INF • So. • R/R • 5-9  
Milpitas, Calif.



**24**

**THESSA MALAU'ULU**

UTL • Gr. • L/R • 5-7  
Long Beach, Calif.



**25**

**JADA BAKER**

INF • R-Jr. • R/R • 5-4  
Longwood, Fla.



**27**

**KK MATHIS**

INF • Jr. • R/R • 5-8  
West Chester, Ohio



**32**

**KAIRI RODRIGUEZ**

C • R-So. • R/R • 5-4  
West Palm Beach, Fla.



**42**

**BROOKLINN THOMAS**

UTL • Fr. • R/R • 5-9  
Durham, N.C.



**99**

**ALEYAH TERRELL**

OF • Jr. • L/R • 5-4  
Greensboro, N.C.



**MARISSA YOUNG**

Head Coach  
Eighth Season  
Michigan '03



**OLIVIA WATKINS**

Associate Head Coach  
Third Season  
Western Kentucky '15



**TAYLOR WIKE**

Associate Head Coach  
Second Season  
North Carolina '18



**PARKER STAGGS**

Assistant Coach  
First Season  
Arkansas '22



**LISA MAULDEN**

Director of Player Development  
First Season  
Seattle '15