

# SOUTHERN MISS

## 2026 Softball Game Notes February 10

### Southern Miss Golden Eagles

**Record: 4-1 (0-0 Sun Belt)**

Head Coach: Natalie Poole

Career Record: 624-722 (27th Season)



### No. 19 Mississippi State Bulldogs

**Record: 4-0 (0-0 SEC)**

Head Coach: Samantha Ricketts

Career Record: 201-119 (7th Year)



**Tuesday, Feb. 10**

vs. Mississippi State

4:00 p.m.



### Quick Hits

- Freshman outfielder Hannah Christian was named to the Preseason All-Sun Belt Team. Starting 50 games in right field, Christian led the Golden Eagles with 55 hits and 30 runs scored, the most ever by a Southern Miss freshman. Having been selected to the All-Sun Belt Team in 2025 marks the first time in program history that a true freshman has earned First Team All-Conference honors.
- Head coach Natalie Poole welcomes 12 new comers to the team, having signed 11 players last year and getting Katalina Ybarra, as a transfer, from College of Lake County.
- Head Coach Natalie Poole has coached 154 games at Southern Miss, with number 160 being opening day.
- Nealy McManus is ranked 23rd in the nation and tied for first in the conference with 9 RBIs.
- Kayla Giardina recorded a complete game shutout making her one of the 148 qualified pitchers with a 0.00 ERA
- Southern Miss leads the Country in sacrifice flies with 8
- Hannah Christian is in a seven-way tie for most hits in the Sun Belt Conference with seven
- Issie Coker is in a four-way tie for most walks in the Sun Belt with six
- Nealy McManus and Abbi Troquille are tied for second in the Sun Belt with two sacrifice flies.
- Carrie Green ranks fifth in the Sun Belt for stolen bases with two on two attempts
- Olivia Christian and Kayla Giardina are seated fifth and eighth in the conference with batting average against being .167 and .200 respectively

## Schedule & Results

4-1 0-0 4-1 0-0 0-0

OVR SBC H A N

### Black & Gold Challenge (Hattiesburg, Miss.)

Feb. 6	vs. SEMO	W, 8-0, 5 inn.
Feb. 7	vs. UAB	W, 14-7
Feb. 7	vs. Lipscomb	W, 5-4
Feb. 8	vs. Louisiana Tech	L, 8-3, 8 inn.
Feb. 8	vs. SEMO	W, 5-2

Feb. 10 at No. 19 Mississippi State 4 p.m.

### The Spring Games (Leesburg, Fla.)

Feb. 13	vs. Loyola	3 p.m.
Feb. 13	vs. Bethune-Cookman	5:30p.m.
Feb. 14	vs. Saint John's	1 p.m.
Feb. 14	vs. Alabama State	3:30 p.m.
Feb. 15	vs. Saint John's	10 a.m.

Feb. 17	vs. McNeese	6 p.m.
Feb. 20	at Louisiana Tech	6 p.m.
Feb. 21	at Louisiana Tech	2 p.m.
Feb. 22	at Louisiana Tech	11 a.m.
Feb. 25	at Nicholls	6 p.m.

### Hub City Classic (Hattiesburg, Miss.)

Feb. 27	vs. Chattanooga	4:30 p.m.
Feb. 28	vs. Lamar	2 p.m.
Feb. 28	vs. Morehead State	4:30 p.m.
March 1	vs. Chattanooga	12:30 p.m.
March 1	vs. Jackson State	3 p.m.
March 3	vs. Alcorn State	6 p.m.

### Jacksonville / University of North Florida Tournament (Jacksonville, Fla.)

March 6	vs. Brown	3 p.m.
March 6	at North Florida	7 p.m.
March 7	at Jacksonville	3 p.m.
March 7	vs. Brown	5:30 p.m.
March 8	vs. Presbyterian	10 a.m.

March 11	at Southeastern	5 p.m.
March 13	vs. Louisiana*	6 p.m.
March 14	vs. Louisiana*	2 p.m.
March 15	vs. Louisiana*	12 p.m.
March 18	at UNC Greensboro	5 p.m.
March 20	at App State*	5 p.m.
March 21	at App State*	2 p.m.
March 22	at App State*	12 p.m.
March 25	vs. Nicholls	6 p.m.
March 27	at Troy*	6 p.m.
March 28	at Troy*	3:30 p.m.
March 29	at Troy*	12 p.m.
Apr. 2	vs. James Madison*	6 p.m.
Apr. 3	vs. James Madison*	6 p.m.
Apr. 4	vs. James Madison*	12 p.m.
Apr. 8	Southeastern	6 p.m.
Apr. 10	Georgia Southern*	6 p.m.
Apr. 11	Georgia Southern*	3 p.m.
Apr. 12	Georgia Southern*	2 p.m.
Apr. 17	Texas State*	6 p.m.
Apr. 18	Texas State*	2 p.m.
Apr. 19	Texas State*	12 p.m.
Apr. 21	Ole Miss	6 p.m.
Apr. 24	South Alabama*	6 p.m.
Apr. 25	South Alabama*	2 p.m.
Apr. 26	South Alabama*	12 p.m.
Apr. 30	ULM*	6 p.m.
May 1	ULM*	6 p.m.
May 2	ULM*	2 p.m.

Sun Belt Conference Championship Tournament  
May 5 - May 9

\* Indicates a Conference Matchup

## PROGRAM INFORMATION

### General

Name of School:.....The University of Southern Mississippi  
City/Zip:.....Hattiesburg, MS 39406-0001  
Founded: .....1910  
Enrollment: .....14,146  
Nickname: .....Golden Eagles  
School Colors:.....Black and Gold  
Arena:.....Southern Miss Softball Complex  
Capacity: .....1000  
Affiliation: .....NCAA Division I  
Conference:.....Sun Belt Conference  
President:.....Dr. Joe Paul  
Athletics Director:.....Jeremy McClain  
Athletic Dept. Phone:.....(601) 266-5017

### History

First season: .....1983  
Reinstated.....1999  
Overall all-time record: .....816-967-2  
Conference Titles.....4  
NCAA Tournament Appearances.....Last/2004  
NCAA Regional Titles.....2 (1999,2000)  
College World Series Appearances.....2 (1999,2000)  
Last Postseason Appearance.....2004

### Athletic Communications

Assistant Director of Athletics: .....Jack Duggan  
Office Phone: .....(601) 266-4503  
GA/Softball Contact: .....Zachary Somdal  
Cell Phone: .....(818) 880-7850  
E-mail Address: .....zachary.somdal@usm.edu  
Director of Comms./Sec. Contact.....Jack MacDonald  
Office Phone:.....(601) 266-6240  
Mailing Address: 118 College Drive,  
#5161 Hattiesburg, MS 39406-0001  
Web Address: .....SouthernMiss.com  
Twitter .....@SouthernMissSB / @USMGoldenEagles  
Instagram .....@SouthernMissSB / @SouthernMissAthletics  
Facebook .....facebook.com/southernmisssb

### Coaching Staff

Head Coach: .....Natalie Poole (McNeese State)  
Record at School:.....67-82 (Fourth Year)  
Career Record (yrs.):.....620-721 (25 seasons)  
Softball Office Phone:.....(601) 266-6220  
Assistant Coaches:.....Matt Elzey, Peyton Elzey, Caleb Toshcoff  
Graduate Manager: .....Presleigh Pilon

### Team Information

Overall Record Last Year: .....23-29  
Conference Record/Finish: .....(10-14), 10th  
Returners.....16  
Newcomers.....12

## TEAM INFORMATION

### 2026 Season Recap

Preseason All-Sun Belt Hannah Christian

### Team Information

Returners	16
Newcomers	12
Seniors/Graduates	2
Juniors	5
Sophomores	10

### 2026 Stat Leaders

#### Offensive

Hits	Hannah Christian (7)
Doubles	Kayce Bennett + 2 more(2)
Triples	Nealy McManus, Maddison Johnson (1)
Home Runs	N/A (0)
Batting Average	Nealy McManus (.455)
Runs	Nealy McManus + 4 more(4)
Runs Batted In (RBI)	Nealy McManus (9)

#### Pitching

Appearances	Kayla Giardina (4)
Starts	Kayla Giardina +4more(1)
Innings Pitched	Kayla Giardina (8.0)
Strikeouts	Kayla Giardina (5)
Wins	Kayla Giardina (2)

### Stadium Information

Stadium	Southern Miss Softball Complex
Capacity	1,000
First Season	2002
Surface	Natural Grass
Dimensions	L: 200 C: 220 R:200
Tickets	SouthernMissTickets.com

**SOUTHERN MISS.**  
**GOLDEN EAGLES**

# HEAD COACH NATALIE POOLE



Poole enters her fourth season as the head coach of Southern Miss Softball, having guided the Golden Eagles to back-to-back conference tournament appearances for the first time since the 2012 and 2013 seasons.

During her third season with the Golden Eagles, Poole was at the helm securing a trip to the Sun Belt Conference Tournament after defending the home turf with 16-10 home record in the 2025 season.

Poole logged her 600th career win while getting the best from Hannah Christian, who was the first true freshman in program history to receive postseason honors when she was named to the First Team All-Sun Belt, and

During the 2024 season, Poole oversaw Southern Miss' first conference series win at home in the Sun Belt and its first conference series sweep. The Golden Eagles also secured its first victory against a nationally ranked opponent since 2022 with a win at home against No. 24 Texas State.

With a 10-6 home record, Poole led the team to its third consecutive season with a .500 or better standing at the Southern Miss Softball Complex, the longest streak since 2008-2010.

Poole mentored two All-Sun Belt players in 2024, including Jana Lee's Second Team selection and Hannah Borden's First Team selection. Borden sailed into the program's record books with a single-season record and conference-leading 18 home runs, shattering Southern Miss' all-time home run record with 50 career homers.

In her debut campaign, Poole led the Golden Eagles to a 22-24 finish and their first conference postseason appearance since 2019.

Poole came to Southern Miss after spending the last 11 years as the head coach at Memphis. She served as the second head coach in that program's history.

During her tenure at Memphis, Poole mentored 11 all-conference selections, including three first-team picks, to go along with Tyler Trosclair Klatt, who earned the American Athletic Conference Rookie of the Year in 2015.

Trosclair Klatt set plenty of records, including career hits (249), career stolen bases (78), and career runs scored (138). Trosclair Klatt was a two-time All-Conference performer, earning First-Team in 2017 and Second-Team in 2018.

The program also produced two All-Freshman selections over the final two years of Conference USA, before having two make AAC All-Rookie team accolades during their tenure in that league.

**McNeese ('98) Career Record: 624-724 (25th Season)**  
**Southern Miss Record: 71-83 (4th Season)**

## Head Coach-Southern Miss

Year	Record
2023	22-24
2024	22-29
2025	23-29
2026	4-1

on academics helped push one of its student-athletes to CoSIDA First Team Academic All-District honors and later enjoyed a program-record 15 NFCA All-America Scholar-Athlete selections in 2021. In all, the Tigers produced 82 NFCA All-America Scholar-Athletes during Poole's years at Memphis.

During her time at Memphis, Poole was selected as the NCAA Division I representative for the National Fastpitch Coaches Association Board of Directors and also currently serves on the NCAA Softball Selection Committee.

Poole went to Memphis after spending three seasons leading the helm at McNeese State. She guided the Cowgirls to three-straight 30-win seasons, including a school-record 38 wins in 2010. Poole led McNeese State to two Southland Conference (SLC) Tournament championship games, winning the tournament title in 2010 and advancing to the NCAA Regional Tournament.

Poole compiled a 100-84 overall record and went 55-35 in conference play during the three years.

Poole was named the Southland Conference Coach of the Year in her first season at McNeese State in 2009 after leading the Cowgirls to a second-place finish in the league. The team finished the year with a 31-28 record, marking the Cowgirls' first winning season in 11 years.

In her three years at McNeese State, 20 players earned All-Southland Conference honors. In 2011, outfielder Claire Terracina became the first Cowgirl since 2008 selected to the All-SLC first team. In addition, Alanna DiVittorio was named the Louisiana Sports Writers Association co-Freshman of the Year in 2011.

Poole led McNeese State to a 31-29 record in 2011 and a third-place finish at the Southland Conference Tournament. Seven players were named to both the All-SLC and All-Louisiana teams.

In her three years at McNeese State, 20 players earned All-Southland Conference honors. In 2011, outfielder Claire Terracina became the first Cowgirl since 2008 selected to the All-SLC first team. In addition, Alanna DiVittorio was named the Louisiana Sports Writers Association



Conference Tournament. Seven players were named to both the All-SLC and All-Louisiana teams.

Prior to returning to her alma mater, Poole served as the head coach for seven seasons at Georgia Southern, where she compiled a 212-215 career record. The Eagles went 71-53 in the Southern Conference under Poole's tutelage and earned a trip to the NCAA Tournament in 2006. She was named the SoCon Coach of the Year in 2002, her first year as a head coach.

During her time at Georgia Southern, the Eagles had just one losing conference season and finished outside the top-four only once. The program set more than 15 single-season records, and four of the top six all-time home run seasons came in Poole's tenure.

She coached the 2006 and 2008 SoCon Players of the Year and three SoCon Freshmen of the Year. During her time with Georgia Southern, 17 players earned All-SoCon honors, including a school-record eight in 2008. In 2006, Poole led Georgia Southern to the program's first NCAA Tournament appearance after winning the SoCon Tournament with six-straight victories. The SoCon title was just the second in school history.

The Eagles nearly repeated as SoCon champions in 2007, falling in the conference tournament championship game.

Poole began her collegiate coaching career at McNeese State. She joined the Cowgirls staff as a graduate assistant in 1998 and served as an assistant coach from 1999-2001.

As a college athlete, Poole was a standout catcher for McNeese State from 1994-97. She was a three-time All-Southland Conference pick (1995-97) and a two-time All-South Region selection (1996-97). Poole also earned All-Louisiana honors in 1996. As a freshman, she helped the Cowgirls to a Southland Conference title and the school's first NCAA Tournament appearance. Poole was named McNeese State's Most Valuable Player her senior year and concluded her playing career with a .296 batting average.

In the classroom, Poole was a three-time CoSIDA Academic All-District VI selection (1995-97) and was a 1997 Academic All-American. She graduated with a bachelor's degree in painting from McNeese State in 1998 and earned her master's degree in instructional technology from the school in 2000. In 2017, Poole earned her Doctorate in Education in Higher Ed Administration. A native of Baton Rouge, La., Poole has one daughter, Isabella Grace.

YEARS	SCHOOL
2023-Present	Southern Miss
2012-2022	Memphis
2009-2011	McNeese State

## PREVIEW

**HATTIESBURG, Miss.** – Southern Miss hits the road, following the Black and Gold Challenge on opening weekend, to play No. 19 Mississippi State in Starkville at Nusz Park Feb. 10 at 4:00 p.m.

The Golden Eagles won four of five games over opening weekend, dropping only one in extra innings to Louisiana Tech. Through the weekend, Southern Miss leads the country in sacrifice flies (8), leading the Sun Belt in double plays and third in the nation. The Golden Eagles lead the Sun Belt in walks (28).

With Kayla Giardina's complete game shutout on Feb. 6, she joins only 49 other pitchers to lead the NCAA in complete games. In addition, she also is a part of 148 other qualified pitchers with a 0.00 ERA. Nealy McManus is ranked 23rd overall and first in the conference with 9 RBIs. McManus and Maddison Johnson are both ranked 18th in the country with one triple a piece.

No. 19 Mississippi State, according to D1 Softball.com, is 4-0 after run-ruling Baylor 10-0 through five innings going on to beat Northwestern State, Wichita State, in extra innings, and New Mexico. Alyssa Faircloth picked up 14 strikeouts in the matchup against New Mexico ranking her eight in the nation per seven innings.

The history between the two programs has Mississippi State leading the matchup 20-4 with Southern Miss prevailing in 2022 with a 3-0 victory.

Feb. 10 – No. 19 Mississippi State at 4:00 p.m.  
Starkville, Miss. - Nusz Park  
TV: ESPN+

For the latest information on Southern Miss Softball, follow the program on Facebook ([facebook.com/SouthernMissSB](https://facebook.com/SouthernMissSB)), X ([@SouthernMissSB](https://twitter.com/SouthernMissSB)) and Instagram ([@southernmisssb](https://instagram.com/southernmisssb)).



Southernmisssb



Southernmisssb



Southernmisssb

## RECAP

**HATTIESBURG, Miss.** – Southern Miss Softball (4-1) starts the day dropping game one to Louisiana Tech (4-0) in extra innings but bouncing back for game two with the bats waking up late to secure the win against Southeast Missouri State (0-5).

The Golden Eagles finish off opening weekend 4-1, the best start to the season since 2023 where Southern Miss went 5-0 through the first five games of the season.

"I thought that we had a good weekend overall. It feels good to finish 4-1 and the only loss in extra innings" said head coach Natalie Poole. "We had some good performances by people in the starting lineup and from those off the bench. We learned a lot about ourselves as a team and look forward to week two."

Southern Miss 3, Louisiana Tech 8

Kicking off the final day of the Black and Gold Challenge, Louisiana Tech gets the bats going in the first with a two-run top of the first off an RBI single to right and center respectively.

Southern Miss was quick to respond with Emma Day showing plate discipline drawing a two-out bases loaded walk bringing in Maddison Johnson.

The Golden Eagles kept up the pressure getting out of the top second unscathed allowing, Preseason All-Sun Belt, Hannah Christian to take a shot to left for an RBI double.

The tied score book didn't last long with a one out double to center propelling the Bulldogs back into the lead 3-2.

Natalie Herrington worked around an error at the top of the fourth with two ground outs and a fly out. Maddison Johnson utilized the opportunity, getting an RBI bunt single with Kinsley Gordon-Sivley turning on the jets tying the game for the second time at 3-3.

The senior, Herrington, held steady getting through one and a third innings before Olivia Christian got called into the pitching circle and ending the sixth. The score stayed consistent through the seventh with both offenses laying dormant before Louisiana Tech exploded for a five run eighth with Southern Miss falling short, unable to respond.

Southern Miss 5, Southeast Missouri State 2

SEMO was the first to strike with a two-run shot to left with McCall Davis able to bounce back and close out the inning without further damage. Southern Miss was sluggish to get anything done offensively early in the contest.

Madilyn Graham, making her collegiate debut and recording her first collegiate win, made quick work of the middle innings relying on her defense only allowing two hits through four innings picking up one strikeout along the way.

With the tempo Madilyn Graham set, the offense found their own and snowballed to a five run sixth inning off a two RBI double from Katalina Ybarra, recording her first hit at Southern Miss. Nealy McManus showed off the wheels shortly after with a two RBI triple with Hannah Christian capping off the huge sixth with an RBI single to center with Southern Miss out front 5-2.

Poole calls on Kayla Giardina to close out the weekend where she pops up the first batter then strikes out the next two leaving the Golden Eagles with a 4-1 record on opening weekend at the Black and Gold Challenge.

### Notables:

- Katalina Ybarra made her Southern Miss debut
- Madilyn Graham made her college debut
- McCall Davis made her college debut
- Madilyn Graham recorded her first collegiate win
- Hannah Christian has a five game hitting streak
- SEMO and Southern Miss have only played three games against each other in program history
- With Louisiana Tech joining the Sun Belt next season, Southern Miss has three non-conference games left against Louisiana Tech before their addition.



## 2026 News and Notes

### Hannah Christian Named to Preseason All-Sun Belt Team

**HATTIESBURG, Miss.** – Sophomore out fielder Hannah Christian named to Preseason All-Sun Belt Team, announced by the league office Wednesday morning.

“Hannah had a tremendous year as a freshman last year,” said head coach Natalie Poole. “She played with a lot of maturity and grit. She is the type of player that wants to be counted on in normal and big moments of a game. I believe that coaches in the conference recognize that also in her. I’m proud of her receiving this recognition and I’m looking forward to seeing her on the field this year.”

In her first season with the Golden Eagles, Christian led the team with a .350 batting average, 55 hits and 30 runs scored. The Alabama native set the longest hitting streak by a freshman in program history with 15, recorded the most hits by a freshman in program history with 55 and was named First Team All-Sun Belt for her efforts.

Christian also utilized 17 walks, 12 hit by pitches and a .918 OBP to steal 12 bases on 16 attempts, the second most on the team. On the defensive side of the ball, she posted 68 put outs resulting in a .945 fielding percentage.



### Softball Coach Natalie Poole Signs Three-Year Contract Extension

**HATTIESBURG, Miss.** – Southern Miss announced Thursday afternoon that softball coach Natalie Poole signed a three-year contract extension.

“I am forever grateful for the opportunity to continue to lead the Golden Eagle Softball program,” said Poole. “There is nowhere else I would rather be coaching.”

Poole has led the Golden Eagles for three seasons and has made it to the conference tournament three years in a row - the first time in program history - while also beating a nationally ranked opponent for the first time since 2022 by besting No. 24 Texas State at home.

“Since being hired, we have been on a mission to get this program highly competitive in the Sun Belt, build a quality and sustainable culture, and be great students and leaders,” said Poole. “We have accomplished so much of this but still have work to do. We want to make this program a success in ALL ways. I am excited to continue the journey here, as I feel passionate about this university and this program.”

The extension solidifies the impact Poole has made on not only the program but also the players. With Poole at the helm, the Sun Belt hasn’t been a stranger to Southern Miss player achievements with most recently having Hanna Christian selected for the All-Sun Belt First team in 2025 and having two All-Sun Belt players in Jana Lee and Hannah Borden who got picked to the second team and the first team respectively in 2024.

During her tenure at Memphis, mentored 11 all-conference selections, with three first-team picks and one of whom being Kyler Trosclair Katt in 2015 who was the American Athletic Conference Rookie of the Year in 2015, as well as producing 82 NFCA All-America Scholar-Athletes. She has laid the groundwork through building a culture proven by Madeline Moody being named to the All-Sun Belt Community Service team overseeing over 1,200 hours of community service and the reception of the 2025 Student-Athlete Advisory Committee (SAAC) Talon Awards Community Impact Award of Hattiesburg and the donors and alumni who have continued to invest in the future of the program and the athletes that are here.”

The culture that Coach Poole cultivates embodies the values of Southern Miss. With her seven-year stint at Georgia Southern, she brought the eagles on a trip to the NCAA Tournament in 2006, the first time in program history, to cap off six straight victories to wrap the season up. The program also set more than 15 single-season records and only had one losing conference season with Poole behind the wheel.



“I would like to thank Dr. Paul, Jeremy McClain, Shawn Jones, and Spencer Bridges for their faith in what I am doing,” said Poole. “I enjoy working alongside our administrators as we continue to plan and execute ways to elevate our facility, program, and player development. I have also appreciated the community.”

## Southern Miss Game-By-Game Hitting



Date	Opponent	AB	R	H	RBI	2B	3B	HR	BB	IBB	SB	CS	HBP	SH	SF	GDP	K	PO	A	E	Avg.
Feb 06, 2026	SEMO	21	8	11	8	3	0	0	8	0	1	0	1	1	1	0	0	15	7	0	.259
Feb 07, 2026	UAB	27	14	11	12	1	1	0	7	0	2	0	0	0	4	0	3	21	9	0	.321
Feb 07, 2026	Lipscomb	21	5	6	5	0	0	0	4	0	1	1	0	0	2	0	4	21	10	1	.273
Feb 08, 2026	Louisiana Tech	29	3	5	4	3	0	0	5	0	0	0	1	1	1	0	5	24	12	1	.308
Feb 08, 2026	SEMO	27	5	9	5	3	1	0	4	0	2	0	0	0	0	0	3	21	9	0	.285
<b>Totals</b>		<b>125</b>	<b>35</b>	<b>42</b>	<b>34</b>	<b>10</b>	<b>2</b>	<b>0</b>	<b>28</b>	<b>0</b>	<b>6</b>	<b>1</b>	<b>2</b>	<b>2</b>	<b>8</b>	<b>0</b>	<b>15</b>	<b>102</b>	<b>47</b>	<b>2</b>	<b>.326</b>

Southern Miss Game-By-Game Pitching



Date	Opponent	IP	H	R	ER	BB	SO	2B	3B	HR	WP	BK	HBP	IBB	Score	W	L	SV	ERA
Feb 06, 2026	SEMO	5.0	4	0	0	2	2	0	0	0	0	0	0	0	8-0	1	0	0	0.00
Feb 07, 2026	UAB	7.0	10	7	7	7	0	1	0	0	0	0	0	0	14-7	2	0	0	7.00
Feb 07, 2026	NORTH TEXAS	7.0	7	4	3	1	1	2	0	0	0	0	0	0	5-4	3	0	0	3.00
Feb 08, 2026	TENNESSEE STATE	8.0	11	8	8	7	2	2	0	0	0	0	1	0	3-8	3	1	0	7.00
Feb 08, 2026	SAMFORD	7.0	5	2	2	1	4	0	0	1	0	0	0	0	5-2	4	1	0	2.00
Totals		34.0	37	21	20	18	9	5	0	1	0	0	1	0	35-21	4	1	0	

# Career Records



## Career Records

### Batting Leaders

#### Batting Average

Rk.	Player, Seasons	Avg.
1.	Amy Berman, 1999-00	.417
2.	Chrystal Stevens, 1999-00	.394
3.	Erin Johnson, 1999-00	.348
4.	Megan Hill, 2007-10	.347
5.	Lauren Holifield, 2016-17	.338
6.	Jen Ford, 1999-00	.333
7.	Destini Brown, 2019-22	.320
8.	Auriel Jenkin, 2002-04	.314
9.	Hannah Borden, 2020-24	.313
10.	Jennifer Collins, 1999-00	.302

### Games Played

Rk.	Player, Seasons	GP
1.	Kenya Peters, 1999-02	253
2.	Jessica Huerta, 2003-06	244
3.	Kristie Martin, 1999-02	243
4.	Ashley Davis, 2003-06	240
5.	Sarah Boyd, 2001-04	240
6.	Jennifer Fox, 2005-08	238
7.	Ashley Brennan, 2003-06	237
8.	Heather Bell, 2001-04	235
9.	Kristin Pilgrim, 2006-09	233
10.	Charity Butler, 2003-06	233
11.	Tammy Edwards, 2000-03	233

### Games Started

Rk.	Player, Seasons	GS
1.	Kenya Peters, 1999-02	247
2.	Jessica Huerta, 2003-06	244
3.	Jennifer Fox, 2005-08	238
4.	Ashley Brennan, 2003-06	234
5.	Kristin Pilgrim, 2006-09	231
6.	Ashley Davis, 2003-06	231
7.	Tata Davis, 2018-22	231
8.	Sarah Boyd, 2001-04	228
9.	Hannah Borden, 2020-24	222
10.	Megan Hill, 2007-10	220

### At Bats

Rk.	Player, Seasons	AB
1.	Tata Davis, 2018-22	724
2.	Ashley Davis, 2003-06	697
3.	Jennifer Fox, 2005-08	680
4.	Jill Vaughn, 1987-90	680
5.	Morgan McKeever, 2013-16	671
6.	Ashley Brennan, 2003-06	667
7.	Hannah Borden, 2020-24	665
8.	Kenya Peters, 1999-02	656
9.	Sarah Boyd, 2001-04	646
10.	Jessica Huerta, 2003-06	644

### Runs

Rk.	Player, Seasons	Runs
1.	Destini Brown, 2019-22	156
2.	Megan Hill, 2007-10	148
3.	Ashley Brennan, 2003-06	128
4.	Jessica Huerta, 2003-06	127
5.	Amy Berman, 1999-00	121
6.	Tata Davis, 2018-22	121
7.	Leslie Lejune, 2009-12	112
8.	Hannah Borden, 2020-24	111
9.	Chrystal Stevens, 1999-00	105
10.	Morgan McKeever, 2013-16	100

### Hits

Rk.	Player, Seasons	Hits
1.	Tata Davis, 2018-22	218
2.	Hannah Borden, 2020-24	208
3.	Megan Hill, 2007-10	205
4.	Ashley Davis, 2003-06	193
5.	Morgan McKeever, 2013-16	192
6.	Jennifer Fox, 2005-08	186
7.	Amy Berman, 1999-00	185
8.	Jill Vaughn, 1987-90	185
9.	Jessica Huerta, 2003-06	181
10.	Katie Cleary, 2013-16	173
11.	Kenya Peters, 1999-01	173

### Errors

Rk.	Player, Seasons	Errors
1.	Tata Davis, 2018-22	42
2.	Ashley Davis, 2003-06	41
3.	Megan Hill, 2007-10	40

4.	Sarah Evans, 2013-16	39
5.	Hannah Borden, 2020-24	38
6.	Leslie Lejune, 2009-12	36
7.	Sarah Boyd, 2001-04	36
8.	Katie Cleary, 2013-16	34
9.	Amy Berman, 1999-00	34
10.	Ashley Brennan, 2003-06	33
11.	Charity Butler, 2003-06	33
12.	Jessica Huerta, 2003-06	33

### Tripled

Rk.	Player, Seasons	3B
1.	Megan Hill, 2007-10	15
2.	Destini Brown, 2019-22	9
3.	Sarah Evans, 2013-16	8
4.	Jessica Huerta, 2003-06	8
5.	Erin Johnson, 1999-00	8
6.	Chrystal Stevens, 1999-00	8
7.	Amy Berman, 1999-00	7
8.	Leigh Marrero, 1985-87	7
9.	Sandra Duck, 1985-86	7
10.	Tata Davis, 2018-22	7

### Home Runs

Rk.	Player, Seasons	HR
1.	Hannah Borden, 2020-24	50
2.	Megan Hill, 2007-10	41
3.	Kenya Peters, 1999-01	33
4.	Amy Berman, 1999-00	29
5.	Tata Davis, 2018-22	27
6.	Destini Brown, 2019-22	24
7.	Mackenzie Sher, 2011-2014	22
8.	Lauren Holifield, 2016-17	22
9.	Heather Bell, 2001-04	21
10.	Sarah Boyd, 2001-04	21

### Runs Batted In

Rk.	Player, Seasons	RBI
1.	Megan Hill, 2007-10	151
2.	Hannah Borden, 2020-24	150
3.	Tata Davis, 2018-22	149
4.	Jennifer Fox, 2005-08	118
5.	Kenya Peters, 1999-02	111
6.	Amy Berman, 1999-00	109
7.	Jen Ford, 1999-00	108
8.	Kristin Pilgrim, 2006-09	105
9.	Ashley Davis, 2003-06	101
10.	Ashley Brennan, 2003-06	99

### Total Bases

Rk.	Player, Seasons	TB
1.	Megan Hill, 2007-10	398
2.	Hannah Borden, 2020-24	398
3.	Tata Davis, 2018-22	355
4.	Amy Berman, 1999-00	320
5.	Kenya Peters, 1999-02	307
6.	Ashley Davis, 2003-06	290
7.	Jessica Huerta, 2003-06	275
8.	Ashley Brennan, 2003-06	273
9.	Jennifer Fox, 2005-08	269
10.	Destini Brown, 2019-22	269

### Slugging Percentage

Rk.	Player, Seasons	Pct.
1.	Amy Berman, 1999-00	.721
2.	Megan Hill, 2007-10	.673
3.	Hannah Borden, 2020-24	.598
4.	Lauren Holifield, 2016-17	.585
5.	Erin Johnson, 1999-00	.574
6.	Jen Ford, 1999-00	.549
7.	Destini Brown, 2019-22	.546
8.	Chrystal Stevens, 1999-00	.542
9.	Auriel Jenkins, 2002-04	.495
10.	Jessica Huerta, 2003-06	.491

### Walks

Rk.	Player, Seasons	BB
1.	Megan Hill, 2007-10	166
2.	Destini Brown, 2019-22	118
3.	Hannah Borden, 2020-24	109
4.	Jessica Huerta, 2003-06	101
5.	Ashley Brennan, 2003-06	94
6.	Jennifer Fox, 2005-08	82
7.	Kristin Pilgrim, 2006-09	72
8.	Amanda Brown, 2001-03	72

9.	Leslie Lejune, 2009-12	71
10.	Kenya Peters, 1999-02	71

### Hit By Pitch

Rk.	Player, Seasons	HBP
1.	Channika Gant, 1999-02	46
2.	Kenya Peters, 1999-02	32
3.	Chanell Thurman, 2009-12	26
4.	Brandi Alonzo, 2007-10	26
5.	Kristin Pilgrim, 2006-09	26
6.	Amanda Brown, 2001-03	25
7.	Charity Butler, 2003-06	22
8.	Sarah Evans, 2013-16	21
9.	Jessica Huerta, 2003-06	20
10.	Chrystal Stevens, 1999-00	20

### On-Base Percentage

Rk.	Player, Seasons	Pct.
1.	Megan Hill, 2007-10	.494
2.	Amy Berman, 1999-00	.471
3.	Destini Brown, 2019-22	.460
4.	Chrystal Stevens, 1999-00	.442
5.	Erin Johnson, 1999-00	.439
6.	Hannah Borden, 2020-24	.418
7.	Lauren Holifield, 2016-17	.416
8.	Tori Dew, 2016-17	.403
9.	Jen Ford, 1999-00	.397
10.	Jessica Huerta, 2003-06	.393

### Sacrifice Flies

Rk.	Player, Seasons	SF
1.	Joan Copeland, 1983-86	9
2.	Logan James, 2007-10	8
3.	Morgan McKeever, 2013-16	7
4.	Amy Musson-Boutwell, 1984-85	7
5.	Hannah Borden, 2020-24	6
6.	Lauren Holifield, 2016-17	6
7.	Samantha Papp, 2016-2019	6
8.	Mackenzie Sher, 2011-14	5
9.	Lauren Castellvi, 2007-10	5
10.	Jennifer Fox, 2005-08	5
11.	Channika Gant, 1999-02	5
12.	Jen Ford, 1999-00	5
13.	Debbie Anderson, 1984-87	5

### Sacrifice Hits

Rk.	Player, Seasons	SH
1.	Colleen Wagner, 1987-90	36
2.	Kristie Martin, 1999-02	29
3.	Kenya Peters, 1999-02	29
4.	Channika Gant, 1999-02	28
5.	Chrystal Stevens, 1999-00	28
6.	Jessica Huerta, 2003-06	26
7.	Debbie Anderson, 1984-87	26
8.	Joan Copeland, 1983-86	26
9.	Allison Bullard, 2005-08	24
10.	Jill Vaughn, 1987-90	24

### Stolen Bases

Rk.	Player, Seasons	SB
1.	Chrystal Stevens, 1999-00	81
2.	Channika Gant, 1999-02	60
3.	Ashley Brennan, 2003-06	59
4.	Amanda Brown, 2001-03	51
5.	Jessica Huerta, 2003-06	48
6.	Heather Bell, 2001-04	48
7.	Kristie Martin, 1999-02	46
8.	Jennifer Collins, 1999-00	45
9.	Allison Bullard, 2005-08	39
10.	Charity Butler, 2003-06	39

### Pitching Leaders

#### Earned Run Average

Rk.	Player, Seasons	ERA
1.	Courtney Blades, 1999-00	0.94
2.	Kim Owens, 1986-88	1.36
3.	Amy Musson-Boutwell, 1984-85	1.61
4.	Melissa Cundiff, 2001-02	1.73
5.	Robin Whittaker, 1984-88	2.04
6.	Felicia Gonzales, 1999-02	2.13
7.	Jessica Holaway, 2002-03	2.28
8.	Donna Legg, 1983-85	2.72
9.	Kim Crowson, 2017-18	2.74
10.	Amy Newland, 1989-92	2.94

### Wins

Rk.	Player, Seasons	Wins
1.	Courtney Blades, 1999-00	95
2.	Felicia Gonzales, 1999-02	55
3.	Jessica Holaway, 2002-04	48
4.	Samantha Robles, 2014-18	46
5.	Samantha Davis, 2006-09	38
6.	Danielle Wymer, 2003-06	36
7.	Amy Newland, 1989-92	32
8.	Robin Whittaker, 1984-88	32
9.	Kim Owens, 1986-88	31
10.	Courtney Ramos, 2009-12	28

### Appearances

Rk.	Player, Seasons	App
1.	Samantha Robles, 2014-18	135
2.	Courtney Blades, 1999-00	122
3.	Felicia Gonzales, 1999-02	121
4.	Samantha Davis, 2006-09	116
5.	Amy Newland, 1989-92	114
6.	Beth Dietrich, 2010-13	111
7.	Courtney Ramos, 2009-12	108
8.	Jessica Holaway, 2002-04	105
9.	Danielle Wymer, 2003-06	102
10.	Felicia Gonzales, 1999, 2001-02	94

### Games Started

Rk.	Player, Seasons	GS
1.	Courtney Blades, 1999-00	114
2.	Amy Newland, 1989-92	100
3.	Samantha Robles, 2014-18	98
4.	Danielle Wymer, 2003-06	83
5.	Felicia Gonzales, 1999-02	81
6.	Kim Owens, 1986-88	80
7.	Jessica Holaway, 2002-04	79
8.	Samantha Davis, 2006-09	77
9.	Beth Dietrich, 2010-13	73
10.	Courtney Ramos, 2009-12	73
11.	Robin Whittaker, 1984-88	63

### Complete Games

Rk.	Player, Seasons	CG
1.	Amy Newland, 1989-92	93
2.	Courtney Blades, 1999-00	83
3.	Kim Owens, 1986-88	74
4.	Jessica Holaway, 2002-04	69
5.	Felicia Gonzales, 1999-02	67
6.	Robin Whittaker, 1984-88	58
7.	Samantha Davis, 2006-09	51
8.	Tina Sharkey, 1990-92	50
9.	Samantha Robles, 2014-18	48
10.	Beth Dietrich, 2010-13	45

### Shutouts

Rk.	Player, Seasons	Sho
1.	Courtney Blades, 1999-00	50
2.	Felicia Gonzales, 1999-02	28
3.	Jessica Holaway, 2002-04	18
4.	Kim Owens, 1986-88	12
5.	Courtney Ramos, 2009-12	9
6.	Robin Whittaker, 1984-88	9
7.	Amy Musson-Boutwell, 1984-85	9
8.	Danielle Wymer, 2003-06	8
9.	Beth Dietrich, 2010-13	7
10.	Amy Newland, 1989-92	7

### Saves

Rk.	Player, Seasons	Saves
1.	Samantha Davis, 2006-09	6
2.	Jessica Holaway, 2002-04	6
3.	Samantha Robles, 2014-18	5
4.	Beth Dietrich, 2010-13	4
5.	Jillian Johnson, 2015-18	4
6.	Courtney Blades, 1999-00	3
7.	Courtney Ramos, 2009-12	2
8.	Felicia Gonzales, 1999-02	2
9.	Several tied with	1

### Innings Pitched

Rk.	Player, Seasons	IP
1.	Courtney Blades, 1999-00	717.2
2.	Amy Newland, 1989-92	659.2
3.	Samantha Robles, 2014-18	596
4.	Jessica Holaway, 2002-04	576.1

5.	Felicia Gonzales, 1999-01	572.2
6.	Samantha Davis, 2006-09	565.1
7.	Kim Owens, 1986-88	563.0
8.	Beth Dietrich, 2010-13	502.1
9.	Morgan Leinstock, 2021-23	489
10.	Danielle Wymer, 2003-06	479.1

### Strikeouts

Rk.	Player, Seasons	SO
1.	Courtney Blades, 1999-00	1,160
2.	Felicia Gonzales, 1999-02	727
3.	Morgan Leinstock, 2021-23	443
4.	Jessica Holaway, 2002-04	383
5.	Samantha Robles, 2014-18	341
6.	Courtney Ramos, 2009-12	293
7.	Samantha Davis, 2006-09	283
	Kim Owens, 1986-88	283
9.	Gabby Luciani, 2010-12	272
10.	Beth Dietrich, 2010-13	261





## **2026 Southern Miss Softball Roster**

No.	Name	Pos	Yr.	Ht.	Hometown (Previous School)
00	Carrie Green	OF	So.	5'5	Loganville, Ga. (Grayson HS)
1	Abbi Troquille	UTL	So.	5'5	Tioga, La. (Tioga HS)
2	Olivia Christian	RHP	So.	5'10	Hoover, Ala. (Hoover HS)
3	Chole Miller	C	So.	5'9	Brandon, Miss. (Northwest Rankin HS)
4	Madison Johnson	INF	So.	5'6	Haymarket, Va. (Battlefield HS)
6	Kinsley Gordon-Sivley	OF	R-Jr.	5'5	Myrtle, Missouri (Myrtle Attendance Center)
7	Jolie Hays	LHP	So.	5'4	Brandon, Miss. (Northwest Rankin HS)
8	Julia Glasgow	INF	Fr.	5'7	Canton, Michigan (Germantown HS)
9	BrookLynn White	RHP	Jr.	5'11	Maumelle, Ark. (Central Ark. Christian HS)
10	Natalie Herrington	RHP	Sr.	5'4	Petal, Miss. (Petal HS)
11	Carlee Tubbs	OF	Fr.	5'6	Brandon, Miss. (Northwest Rankin HS)
12	Nealy McManus	INF	R-Jr.	5'1	Millport, Ark. (South Lamar HS)
16	Jadyn Rausch	C/UTL	Fr.	-	Dothan, Ala. (Houston Academy)
17	Ava Nehring	C	Fr.	-	Pride, La. (Central HS)
18	McCall Davis	RHP	Fr.	5'3	Lavonia, Ga. (Franklin County HS)
19	Paris Ferguson	INF	Sr.	5'3	Sugarland, Texas (Kempner HS)
20	Adryan Cox	INF/OF	Fr.	5'8	Dewitt, Ark. (DeWitt HS)
21	Briley Whittington	RHP	Fr.	5'9	West Monroe, La. (West Ouachita HS)
22	Issie Coker	C/UTL	Fr.	5'9	McComb, Miss. (Parklane Academy)
24	Katalina Ybarra	INF	Jr.	5'9	Hudson, Wis. (Hudson HS)
25	Madilyn Graham	RHP	Fr.	-	Stringer, Miss. (Stringer HS)
27	Ava Segura	INF	Fr.	5'8	Lafayette, La. (St. Thomas More Catholic HS)
30	Emma Day	INF	Fr.	5'9	Kentwood, La. (Oak Forest Academy)
31	Hanna Christian	OF	So.	5'6	Hoover, Ala. (Hoover High School)
33	Kayla Giardina	RHP	So.	5'3	Kenner, La. (Archbishop Chapelle HS)
34	Bella Ramon	1B	So.	5'5	Floresville, Texas (Floresville HS)
36	Abigail Morgan	RHP	Jr.	5'9	Vicksburg, Miss. (Warren Central HS)
40	Kayce Bennett	C	R-So.	5'6	Watson, La. (Live Oak HS)

### **Coaching Staff**

Head Coach: Natalie Poole  
 Assistant Coach: Matt Elzey  
 Assistant Coach: Peyton Elzey  
 Assistant Coach: Caleb Toshcoff  
 Graduate Assistant: Presleigh Pilon

### **Pronunciation Guide**

#1 Abbi Troquille (Tro-quill)  
 #6 Kinsley Gordon-Sivley (Siv-lee)  
 #12 Nealy McManus (McMane-us)  
 #16 Jadyn Rausch (Row-shh)  
 #17 Ava Nehring (Neh-ring)  
 #24 Katalina Ybarra (ee-BAR-ah)  
 #33 Kayla Giardina (Gee-ar-dean-uh)  
 #34 Bella Ramon (Rah-mohn)  
 Caleb Toshcoff (TOSH-koff)  
 Matt and Peyton Elzey (EL-zee)

# 2026 TEAM STATS

## 2026 Southern Miss Softball Overall Statistics (as of Feb 9, 2026)

Overall Record: 4-1 Home: 4-1 Away: 0-0 Neutral: 0-0

### All games Sorted by Batting Avg

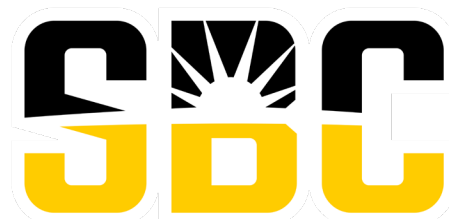
#	Player	AVG	GP-GS	AB	R	H	2B	3B	HR	RBI	TB	SLG%	BB	HBP	SO	GDP	OB%	SF	SH	SB-ATT	PO	A	E	FLD%
12	McManus, Nealy	.455	5-5	11	4	5	1	1	0	9	8	.727	3	0	0	0	.500	2	1	0-0	6	15	0	1.000
40	Bennett, Kayce	.429	5-4	14	4	6	2	0	0	1	8	.571	3	0	1	0	.529	0	0	0-0	10	1	0	1.000
31	Christian, Hannah	.368	5-5	19	2	7	1	0	0	5	8	.421	1	1	1	0	.429	0	0	1-1	11	0	0	1.000
0	Green, Carrie	.357	5-5	14	3	5	0	0	0	1	5	.357	2	1	1	0	.444	1	1	2-2	8	1	0	1.000
4	Johnson, Madison	.357	5-5	14	4	5	1	1	0	3	8	.571	3	0	3	0	.444	1	0	0-0	10	11	0	1.000
30	Day, Emma	.300	4-4	10	2	3	0	0	0	3	3	.300	3	0	2	0	.462	0	0	0-0	28	1	0	1.000
22	Coker, Issie	.286	5-5	7	4	2	2	0	0	3	4	.571	6	0	1	0	.571	1	0	0-0	0	0	0	.000
6	Gordon-Sivley, Kinsley	.250	5-5	12	4	3	0	0	0	3	3	.250	3	0	1	0	.375	1	0	1-1	10	0	0	1.000
1	Troquille, Abbi	.111	5-5	9	3	1	0	0	0	3	1	.111	4	1	2	0	.375	2	0	0-0	10	10	1	.952
8	Glasgow, Julia	1.000	2-1	3	2	3	2	0	0	0	5	1.667	0	0	0	0	1.000	0	0	0-0	9	0	0	1.000
24	Ybarra, Katalina	1.000	1-0	1	1	1	1	0	0	2	2	2.000	0	0	0	0	1.000	0	0	0-0	0	0	0	.000
17	Nehring, Ava	.333	1-1	3	0	1	0	0	0	1	1	.333	0	0	0	0	.333	0	0	0-1	0	0	1	.000
20	Cox, Adryan	.000	5-0	3	2	0	0	0	0	0	0	.000	0	0	1	0	.000	0	0	2-2	0	0	0	.000
11	Tubbs, Carlee	.000	1-0	1	0	0	0	0	0	0	0	.000	0	0	1	0	.000	0	0	0-0	0	0	0	.000
16	Rausch, Jady	.000	1-0	1	0	0	0	0	0	0	0	.000	0	0	0	0	.000	0	0	0-0	0	0	0	.000
27	Segura, Ava	.000	1-0	1	0	0	0	0	0	0	0	.000	0	0	1	0	.000	0	0	0-0	0	0	0	.000
3	Miller, Chloe	.000	1-0	1	0	0	0	0	0	0	0	.000	0	0	0	0	.000	0	0	0-0	0	0	0	.000
7	Hays, Jolie	.000	1-0	1	0	0	0	0	0	0	0	.000	0	0	0	0	.000	0	0	0-0	0	0	0	.000
<b>Totals</b>		<b>.336</b>	<b>5-5</b>	<b>125</b>	<b>35</b>	<b>42</b>	<b>10</b>	<b>2</b>	<b>0</b>	<b>34</b>	<b>56</b>	<b>.448</b>	<b>28</b>	<b>3</b>	<b>15</b>	<b>0</b>	<b>.445</b>	<b>8</b>	<b>2</b>	<b>6-7</b>	<b>102</b>	<b>47</b>	<b>2</b>	<b>.987</b>
<b>Opponents</b>		<b>.276</b>	<b>5-5</b>	<b>134</b>	<b>21</b>	<b>37</b>	<b>5</b>	<b>0</b>	<b>1</b>	<b>20</b>	<b>45</b>	<b>.336</b>	<b>18</b>	<b>1</b>	<b>9</b>	<b>1</b>	<b>.364</b>	<b>1</b>	<b>2</b>	<b>2-2</b>	<b>91</b>	<b>38</b>	<b>6</b>	<b>.956</b>

LOB: Team (38), Opp (33) DP's Turned: Team (3), Opp (1) IBB: Team (0), Opp (0)

### All games Sorted by Earned Run Avg

#	Player	ERA	W-L	APP	GS	CG	SHO	SV	IP	H	R	ER	BB	SO	2B	3B	HR	B/AVG	WP	HP	BK	SFA	SHA
33	Giardina, Kayla	0.00	2-0	3	1	1	1-0	0	8.0	6	0	0	2	5	1	0	0	.200	0	0	0	0	0
25	Graham, Madilyn	0.00	1-0	1	0	0	0-0	0	4.0	2	0	0	0	1	0	0	0	.143	0	0	0	0	0
21	Whittington, Briley	3.00	1-0	2	1	0	0-0	0	4.2	7	2	2	3	1	0	0	0	.333	0	0	0	0	0
10	Herrington, Natalie	3.50	0-0	2	1	0	0-0	0	6.0	8	3	3	5	1	2	0	0	.308	0	0	0	0	0
2	Christian, Olivia	4.94	0-0	2	1	0	0-0	0	5.2	3	4	4	4	0	1	0	0	.167	0	1	0	0	1
18	Davis, McCall	7.00	0-0	1	1	0	0-0	0	2.0	3	2	2	1	1	0	0	1	.375	0	0	0	0	0
36	Morgan, Abigail	7.00	0-0	1	0	0	0-0	0	1.0	2	2	1	0	0	0	0	0	.400	0	0	0	0	0
9	White, BrookLynn	21.00	0-1	2	0	0	0-0	0	2.2	6	8	8	3	0	1	0	0	.500	0	0	0	1	1
<b>Totals</b>		<b>4.12</b>	<b>4-1</b>	<b>14</b>	<b>5</b>	<b>1</b>	<b>1</b>	<b>0</b>	<b>34.0</b>	<b>37</b>	<b>21</b>	<b>20</b>	<b>18</b>	<b>9</b>	<b>5</b>	<b>0</b>	<b>1</b>	<b>.276</b>	<b>0</b>	<b>1</b>	<b>0</b>	<b>1</b>	<b>2</b>
<b>Opponents</b>		<b>6.46</b>	<b>1-4</b>	<b>13</b>	<b>5</b>	<b>0</b>	<b>0</b>	<b>0</b>	<b>30.1</b>	<b>42</b>	<b>35</b>	<b>28</b>	<b>28</b>	<b>15</b>	<b>10</b>	<b>2</b>	<b>0</b>	<b>.336</b>	<b>3</b>	<b>3</b>	<b>0</b>	<b>8</b>	<b>2</b>

PB: Team (0), Opp (3) Pickoffs: Team (0), Totals , Opp (0) SBA/ATT: Totals (4-4), Bennett (1-1), Herrington (1-1), Morgan (1-1), Nehring (1-1)



# 2026 TEAM STATS

## 2026 Southern Miss Softball Overall Statistics (as of Feb 9, 2026)

All games Sorted by Fielding Pct

#	Player	C	PO	A	E	FLD%	DP	SBA	CSB	SBA%	PB
30	Day, Emma	29	28	1	0	1.000	1	0	0	—	0
12	McManus, Nealy	21	6	15	0	1.000	0	0	0	—	0
4	Johnson, Madison	21	10	11	0	1.000	1	0	0	—	0
31	Christian, Hannah	11	11	0	0	1.000	0	0	0	—	0
40	Bennett, Kayce	11	10	1	0	1.000	0	1	0	1.000	0
6	Gordon-Sivley, Kinsley	10	10	0	0	1.000	0	0	0	—	0
0	Green, Carrie	9	8	1	0	1.000	0	0	0	—	0
8	Glasgow, Julia	9	9	0	0	1.000	1	0	0	—	0
33	Giardina, Kayla	3	0	3	0	1.000	0	0	0	—	0
2	Christian, Olivia	2	0	2	0	1.000	0	0	0	—	0
18	Davis, McCall	1	0	1	0	1.000	0	0	0	—	0
25	Graham, Madilyn	1	0	1	0	1.000	0	0	0	—	0
9	White, BrookLynn	1	0	1	0	1.000	0	0	0	—	0
1	Troquille, Abbi	21	10	10	1	.952	2	0	0	—	0
17	Nehring, Ava	1	0	0	1	.000	0	1	0	1.000	0
10	Herrington, Natalie	0	0	0	0	.000	0	1	0	1.000	0
11	Tubbs, Carlee	0	0	0	0	.000	0	0	0	—	0
16	Rausch, Jadyn	0	0	0	0	.000	0	0	0	—	0
20	Cox, Adryan	0	0	0	0	.000	0	0	0	—	0
21	Whittington, Briley	0	0	0	0	.000	0	0	0	—	0
22	Coker, Issie	0	0	0	0	.000	0	0	0	—	0
24	Ybarra, Katalina	0	0	0	0	.000	0	0	0	—	0
27	Segura, Ava	0	0	0	0	.000	0	0	0	—	0
3	Miller, Chloe	0	0	0	0	.000	0	0	0	—	0
36	Morgan, Abigail	0	0	0	0	.000	0	1	0	1.000	0
7	Hays, Jolie	0	0	0	0	.000	0	0	0	—	0
<b>Totals</b>		<b>151</b>	<b>102</b>	<b>47</b>	<b>2</b>	<b>.987</b>	<b>5</b>	<b>4</b>	<b>0</b>	<b>1.000</b>	<b>0</b>
<b>Opponents</b>		<b>135</b>	<b>91</b>	<b>38</b>	<b>6</b>	<b>.956</b>	<b>1</b>	<b>12</b>	<b>1</b>	<b>.923</b>	<b>3</b>

Hitting minimums - 75% of games played, 2 AB/G

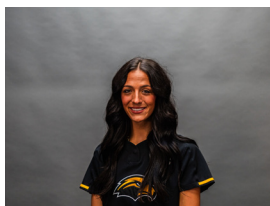
# 2026 Southern Miss Softball Roster



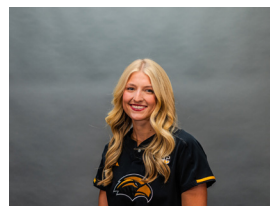
#00 Carrie Green  
OF



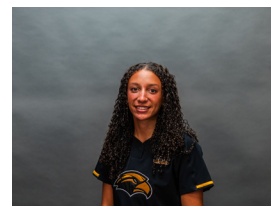
#1 Abbi Troquille  
UTL



#2 Olivia Christian  
RHP



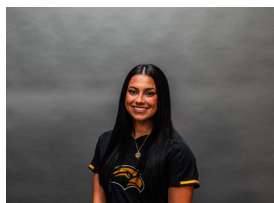
#3 Chloe Miller  
C



#4 Madison Johnson  
INF



#6 Kinsley Gordon-Sivley | OF



#7 Jolie Hays  
LHP



#8 Julia Glasgow  
INF



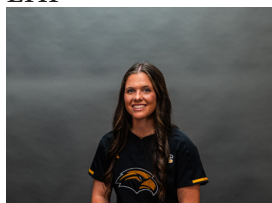
#9 BrookLynn White  
RHP



#10 Natalie Herrington  
RHP



#11 Carlee Tubbs  
OF



#12 Nealy\_McManus  
INF



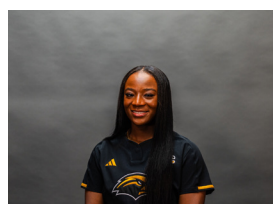
#16 Jayden Rauch  
C/UTL



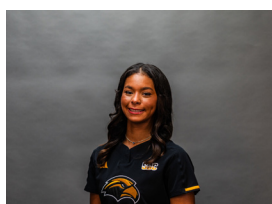
#17 Ava Nehring  
C



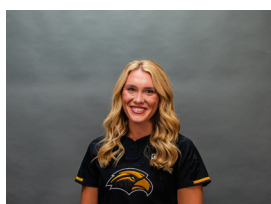
#18 Mccall Davis  
RHP



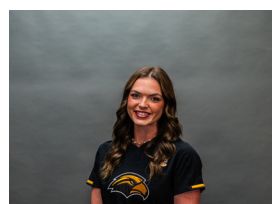
#19 Paris Ferguson  
INF



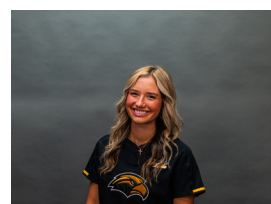
#20 Adryan Cox  
INF/OF



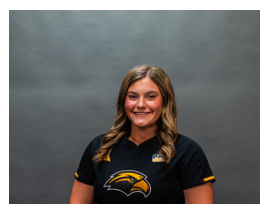
#21 Briley Whittington  
RHP



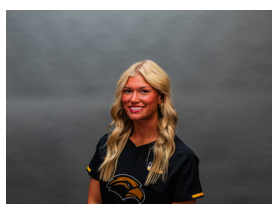
#22 Issie Coker  
C/UTL



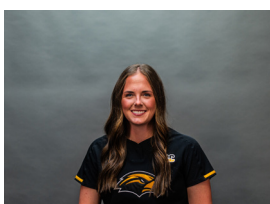
#24 Katalina Ybarra  
INF



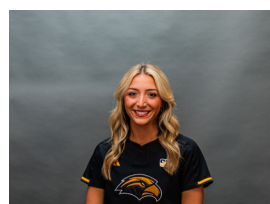
#25 Madilyn Graham  
RHP



#27 Ava Segura  
INF



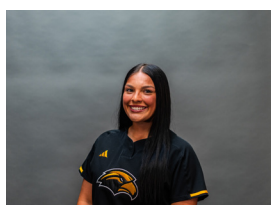
#30 Emma Day  
INF



#31 Hannah Christian  
OF



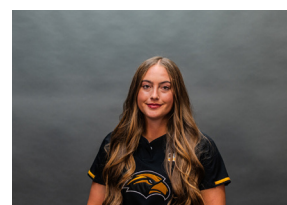
#33 Kayla Giardina  
RHP



#34 Bella Ramon  
1B



#36 Abigail Morgan  
RHP



#40 Kayce Bennett  
C