

WOMEN'S
BASKETBALL

GAME 16: VS MISSISSIPPI STATE // DEC. 28, 2025 // 2 P.M.

SAMFORD

6-9, 0-0 SoCon

Head Coach: Matt Wise (Transylvania University, 2011)

Record at Samford: 6-9 / 1st season

Career Record: 6-9 / 1st season

vs. MSU: First Meeting

VS

MISSISSIPPI STATE

12-1, 0-0 SEC

Head Coach: Sam Purcell (Auburn, 2003)

Record at MSU: 67-35 / 4th season

Career Record: 67-35 / 4th season

vs. Samford: First Meeting

GAME 16: SAMFORD VS MSU- Dec. 28, 2025 | 2 p.m. | Starkville, Miss. | Humphrey Coliseum (9,100)

SCHEDULE & RESULTS:

OVERALL RECORD:	6-9
SoCon:	0-0
NON-CONFERENCE:	6-9
HOME:	3-1
AWAY:	2-7
NEUTRAL:	1-1



BULLDOGS

BROADCAST INFORMATION

TV | SECN+

VIDEOSTREAM

SECN+

LIVE STATS

Statbroadcast.com



BULLDOGS

FRANCIE MORRIS
5 • G • 5-9 • Fr.AUBREY BLANKENSHIP
10 • G/F • 6-0 • R-So.BRIANA RIVERA
11 • G • 5-5 • So.CARLA BAGUDA
12 • F • 6-2 • Fr.SIERRA GODBOLT
22 • G • 5-6 • Sr.

PROBABLE STARTERS

SAMFORD	HT	YR	HOMETOWN	PPG	RPG
5 Francie Morris	5-9	Fr.	Montgomery, Ala.	6.1	3.5
10 Aubrey Blankenship	6-0	R-So.	Mount Juliet, Tenn.	5.3	3.8
11 Briana Rivera	5-5	So.	Orlando, Fla.	12.4	1.9
12 Carla Baguda	6-2	fr.	Barcelona, Spain	2.9	5.3
22 Sierra Godbolt	5-6	Sr.	Orlando, Fla.	7.5	1.9

NEWS & NOTES

- Bulldogs are heading on the road after falling to in-town rival UAB, 49-65.
- The Bulldogs and MSU Bulldogs are meeting for the 3rd time in women's basketball.
- Matt Wise is in his first season of Head Coach at Samford. He previously was in an assistant coach role at Samford for three seasons before making the jump to Head Coach. .
- The Bulldogs welcome seven new players to the 2025-26 roster. Transfers Briana Rivera (Austin Peay) and Sydney Martin (Northern Kentucky University) join freshmen signees Avari Brewer, Kaylee Yarbrough, Camryn Register, Francie Morris and Carla Baguda, as the newcomers to this season's team.
- Briana Rivera is leading the nation in three pointers made and threes attempted per game.

• Briana Rivera is leading the Bulldogs in scoring with 173 points on the season so far. She recently had a career high 24 point performance against Georgia State.

• Kaylee Yarbrough has had four straight games scoring in the double digits. She recently scored a career high 29 points against USC Upstate and 17 points against Lipscomb.

• Dual athlete Martha Bishop also returns to Samford squad this season after winning the SoCon Soccer regular season title.

NOVEMBER

3	Montevallo	W, 75-53
8	at Nebraska	L, 46-80
13	at Florida	L, 40-87
15	at Florida A&M	W, 77-57
19	at Alabama	L, 45-84
21	Stillman	W, 90-35
24	vs. Central Arkansas#	L, 44-67
25	at Georgia State#	L, 64-69
26	vs. Stony Brook#	W, 58-48

DECEMBER

1	at Minnesota	L, 44-70
4	at Tennessee Tech	L, 60-82
7	North Alabama	L, 66-68
14	at USC Upstate	W, 74-67
18	Lipscomb	W, 65-59
22	at UAB	L, 49-65
28	at Mississippi State	2 p.m.

JANUARY

2	Fisk	2 p.m.
8	at UNC Greensboro*	6 p.m.
10	at Western Carolina*	1 p.m.
17	at Mercer*	1 p.m.
22	Wofford*	6 p.m.
24	Furman*	4 p.m.
29	at ETSU*	6 p.m.
31	at Chattanooga*	1 p.m.

FEBRUARY

5	Western Carolina*	4 p.m.
7	UNC Greensboro*	2 p.m.
14	Mercer*	2 p.m.
19	at Furman*	6 p.m.
21	at Wofford*	1 p.m.
26	Chattanooga*	4 p.m.
28	ETSU*	2 p.m.

MARCH

5-8	SoCon Tournament!	TBD
-----	-------------------	-----

* SoCon Game | # Georgia State MTE (Atlanta, Ga.) | ! - SoCon Tournament (Harrah's Cherokee Center, Asheville, N.C.)

** All times Central & Subject to Change





QUICK FACTS • INFORMATION

Location:	Birmingham, Ala.
Year Founded:	1841
Enrollment:	6,101
Nickname:	Bulldogs
School Colors:	Red and Blue
Arena (Capacity):	Pete Hanna Center (5,000)
Affiliation:	NCAA Division I
Conference:	Southern
President:	Dr. Beck Taylor
Director of Athletics:	Martin Newton

COACHING STAFF

Head Coach	Matt Wise
Alma Mater/Yr	Transylvania/ 2011
Record at Samford/Yrs	6-9(1st)
Overall Record/Yrs	6-9(1st)
Assistant Coaches/Yrs	Sally Higgins (10th)
	Hannah Barber (1st)
	Charity Brown (3rd)
	Walker Martin (3rd)
Graduate Assistant	Diego Medellin (1st)
Athletic Training	Lauren Talton (2nd)

TEAM INFORMATION

2024-25 Record	12-19
Southern Conference Record	7-7
Regular Season	SoCon Quarterfinals
Final 2024-25 National Ranking	NR
Starters Returning/Lost (2024-25)	1/4
Letterwinners Returning/Lost (2023-24)	7/6

BASKETBALL HISTORY

First Year of Basketball:	1997-98
All-Time Record:	392-410 (28th year)
All-Time Division I Record:	392-410 (28th year)
Years in NCAA Tourn/Last:	3/2020
	(Cancelled due to COVID-19)
Last NCAA Tournament Appearance:	
	vs, Duke - L, 47-82, Nashville, Tenn., Mar. 18, 2012

OFFICE OF EXTERNAL AFFAIRS

Samford University's **Office of Athletic Communications** provides a full service public relations shop to members of the media. Game day services include credentials, statistics, photography, video clips (where available), and post-game access to coaches and student-athletes. The Office of Athletic Communications is located on the first floor of the Pete Hanna Center.

GAME DAY CREDENTIALS

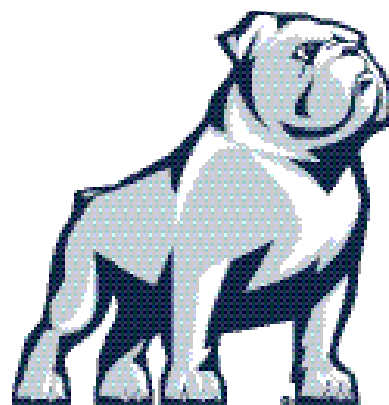
Members of the media wishing to cover Samford University Women's Basketball games may request credentials through the Office of Athletic Communications. Please contact Kyia Smith, Marketing and Communications Coordinator, via email with your request. Her email address is nsmith15@samford.edu.

SAMFORD NUMERICAL ROSTER

#	NAME	P	HGT	CLS	HOMETOWN	PREVIOUS SCHOOL
1	Jada Knight	G	5-7	Gr.	Hoover, Ala.	Butler CC.
2	Avary Brewer	G	5-7	Fr.	Cleveland, Tenn.	Bradley Central HS
3	Kaylee Yarbrough	G	5-9	Fr.	New Hope, Ala.	New Hope HS
4	Camryn Register	G	5-7	Fr.	Lawrenceville, Ga.	Hebron Christian Academy
5	Francie Morris	G	5-9	Fr.	Montgomery, Ala.	Trinity Presbyterian HS
10	Aubrey Blankenship	G/F	6-0	R-So.	Mt. Juliet, Tenn.	Green Hill HS
11	Briana Rivera	G	5-5	So.	Orlando, Fla.	Austin Peay
12	Carla Baguda	F	6-2	Fr.	Barcelona, Spain	Institut Montilivi
20	Alyssa Tarpley	G	5-10	Sr.	Gunter, Texas	Gunter HS
21	Sydney Martin	G/F	5-10	R-Fr.	Somerset, Ky.	Northern Kentucky University
22	Sierra Godbolt	G	5-6	Sr.	Orlando, Fla.	UCF
32	Yael Maayan	F	6-1	So.	Yehuda, Israel	Hof HaSharon
33	Martha Bishop	F	6-1	Jr.	Spartanburg, S.C.	Spartanburg HS
44	Emily Snoddy	C	6-5	R-Sr.	Huntsville, Ala.	Vanderbilt

COACHING & SUPPORT STAFF

POSITION	NAME	YR @ SU
Head Coach:	Matt Wise	1st
Assistant Coaches:	Sally Higgins	10th
	Hannah Barber	1st
	Charity Brown	3rd
	Walker Martin	3rd
Graduate Assistant	Diego Medellin	1st
Athletic Trainer:	Lauren Talton	2nd



COMMUNICATIONS



KYIA SMITH

Marketing and Comms Coordinator
(Contact)
Cell: 407-873-4417
E-Mail: nsmith15@samford.edu



JOEY MULLINS

Asst. AD for Sports Info
Cell: 205-532-3477
E-Mail: JMMullin@Samford.edu



SOUTHERN CONFERENCE STANDINGS



SCHOOL	CONFERENCE					OVERALL				
	W-L	PCT	H	A	STR	W-L	PCT	H	A	STR
Chattanooga	0-0	.000	0-0	0-0	--	7-5	.000	4-2	2-2	1-1
ETSU	0-0	.000	0-0	0-0	--	6-8	.000	3-3	1-4	2-1
Furman	0-0	.000	0-0	0-0	--	6-6	.000	5-2	1-4	0-0
Mercer	0-0	.000	0-0	0-0	--	9-5	.000	4-1	4-4	1-0
Samford	0-0	.000	0-0	0-0	--	6-9	.000	2-1	1-7	1-1
UNCG	0-0	.000	0-0	0-0	--	8-5	.000	5-0	3-5	0-0
Western Carolina	0-0	.000	0-0	0-0	--	2-11	.000	2-4	0-5	0-2
Wofford	0-0	.000	0-0	0-0	--	5-7	.000	3-2	2-5	0-0

THIS WEEK IN THE SoCON

SUNDAY, DECEMBER 28

Samford at USC Upstate	1:00 p.m.
Wofford at Georgia Tech	11 a.m.
Furman at Florida	1 p.m.
ETSU at Virginia Tech	3 p.m.

TUESDAY, DECEMBER 30

Mount Union at WCU	1 p.m.
Brevery College at Furman	1 p.m.
Southern Wesleyan at Chattanooga	5 p.m.

THURSDAY, JANUARY 1

Southern Wesleyan at Wofford	12 p.m.
Carolina University at UNCG	12 p.m.

FRIDAY, JANUARY 2

FSK at Samford	2 p.m.
AUM at Mercer	6 p.m.
King College at ETSU	6 p.m.

NOTE: All times are Central and subject to change

SoCON PRESEASON POLL

COACHES POLL

1. Chattanooga (6)	48
2. UNC Greensboro (2)	39
3. ETSU	38
4. Wofford	28
5. Furman	26
6. Samford	19
7. Western Carolina	14
8. Mercer	12

PRESEASON PLAYER OF THE YEAR

POY - Caia Elisaldez, Jr., G, Chattanooga

PRESEASON ALL-SOUTHERN CONFERENCE TEAM

Meghan Downing, Sr., F, ETSU
Carmen Richardson, So., G, ETSU
Clare Coyle, So., F, Furman
Ariana Bennett, Sr., F, Mercer
Makiah Asidanya, Jr., G, UNCG
Jaila Lee, Sr., G, UNCG
Emily Snoddy (Bowman), R-Sr., C, Samford
Gianna Corbitt, So., F, Chattanooga
Caia Elisaldez, Jr., G, Chattanooga
Molly Masingale, So., G, Wofford

SAMFORD'S RECORD WHEN:

Samford controls the tip	5-1
Opponent controls the tip	1-8
Played at home	3-1
Played on the road	2-7
Played at a neutral site	1-1
Played a team with a .500+ record	0-6
Played a team with a .500 record	1-2
Played a team with a below .500 record	5-1
Samford leads at the half	5-0
Opponent leads at the half	1-8
Tied at the half	0-1
Samford leads with five minutes left	5-1
Opponent leads with five minutes left	0-7
Tied with five minutes left	1-0
Samford leads with one minute left	6-0
Opponent leads with one minute left	0-9
Tied with one minute left	0-0
Samford outrebounds opponent	4-0
Opponent outrebounds Samford	2-8
Rebounds are equal	0-1
Samford shoots 50% or better from field	0-0
Samford shoots less than 50% from the field	6-9
Samford takes more shots	5-2
Opponent takes more shots	1-7
Shots are equal	0-0
Samford blocks more shots	3-0
Opponent blocks more shots	1-7
Blocks are equal	2-2
Samford has more turnovers	0-8
Opponent has more turnovers	4-1
Turnovers are equal	2-0
Samford has more steals	5-1
Opponent has more steals	0-8
Steals are equal	1-0
Samford bench outscored opponent's bench	5-2
Opponent bench outscored Samford's bench	1-6
Benches score the same	0-1
Samford shoots more free throws	1-2
Opponent shoots more free throws	4-7
Free throws are the same	1-0
November games	4-5
December games	2-4
January games	0-0
February games	0-0
March games	0-0
Monday games	1-3
Tuesday games	0-1
Wednesday games	1-1
Thursday games	1-2
Friday games	1-0
Saturday games	1-1
Sunday games	1-1
Overtime games	0-1

PRONUNCIATION
GUIDE

#32- Yael Maayan Yah-eel My-ann



BY THE NUMBERS

1

This is Matt Wise's **first** year as the Bulldogs head coach after being an assistant for three years.

4



Samford has four games on the 2025-26 schedule against Power 4 teams, taking on Nebraska, Florida, Alabama and Mississippi State.

7

Samford welcomes seven newcomers (two transfers and five freshmen) to this year's squad.

THE BULLDOGS

- Matt Wise is in his first season of Head Coach at Samford. He previously was in an assistant coach role at Samford for three seasons before making the jump to Head Coach.
- The Bulldogs welcome seven new players to the 2025-26 roster. Transfers Briana Rivera (Austin Peay) and Sydney Martin (Northern Kentucky University) join freshmen signees Avary Brewer, Kaylee Yarbrough, Camryn Register, Francie Morris and Carla Baguda, as the newcomers to this season's team.
- Briana Riveria is leading the nation in three pointers made and threes attempted per game.
- Dual athlete Martha Bishop also returns to Samford squad this season after winning the SoCon Soccer regular season title.
- Emily Snoddy, who's previous last name was Bowman, played in all 25 games last season. She totaled 184 rebounds, 51 blocks and 248 points. She was named to the SoCon's All-Defensive team after the season. She was named to the this year's preseason All-Southern Conference Team.


VS


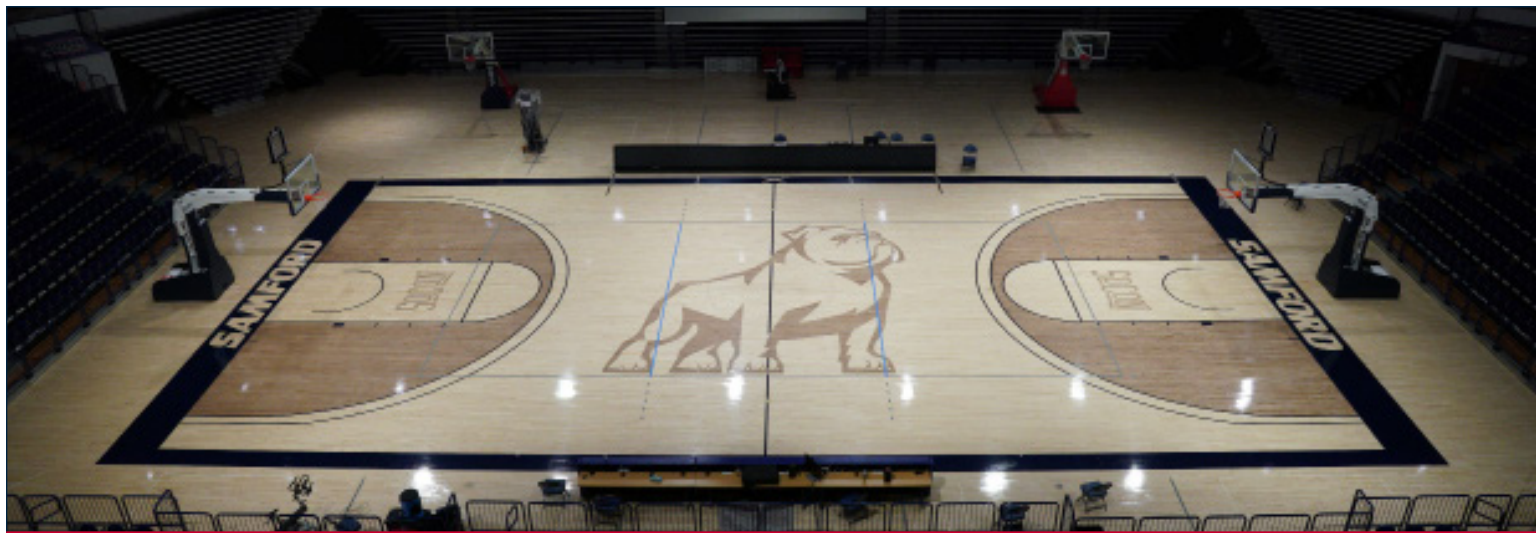
INSIDE THE SERIES

SERIES RECORD		3rd MEETING
Overall		0-2
Last Meeting		L, 68-47

LAST 10 MEETINGS			
DATE	OPPONENT	H / A	RESULT

THE OPPOSITION

- Last season Mississippi State had a record of 22-12 overall and 7-9 in the SEC Conference.
- The Bulldogs are currently 12-1. They recently beat La Salle 85-37.
- Jaylah Lampley led the Bulldogs in their last game with 18 points.
- UAB is in its 4th season under Sam Purcell.



PETE HANNA CENTER

The Pete Hanna Center, a convocation/arena/fitness complex, was completed in the fall of 2007. The center provides outstanding playing facilities for volleyball, and men's and women's basketball in a 5,000-seat arena, a fitness/wellness complex for the entire student body, and state-of-the-art training facilities for Samford's varsity sports.

Also included in the facility are offices, meeting space and support facilities for coaches and athletic administration. The facility is adjacent to Bashinsky Field House and can be expanded up to 6,000 seats for commencement and other major nonathletic events.

Prior to the 2018-19 season a state-of-the-art, center-hung video board was added to the arena. Improvements were also made to the acoustics in the arena the same year.

Pete Hanna Center staff are always available to answer any questions about the facility by visiting the 3rd floor box office and for more information including utilizing space at the Pete Hanna Center for an event please contact Michael Musso, Director of Operations and Facilities, at mmusso@samford.edu.

LARGEST WOMEN'S CROWDS @ "THE PETE"

DATE	OPPONENT	W/L	SU	OPP	ATTENDANCE
11/3/25	Montevallo	W	75	53	1,715
11/6/23	AUM	W	78	51	1,621
1/26/09	Wofford	W	81	60	1,203
2/14/11	Davidson	W	58	47	1,158
2/28/09	Chattanooga	L	48	71	1,078
2/9/13	UNC Greensboro	L	51	52	1,058
12/12/10	Clemson	W	58	48	1,037
2/11/17	Western Carolina	W	51	50	949
2/7/15	Wofford	W	69	50	928
2/23/09	Western Carolina	L	53	55	913
12/7/13	Mercer	L	52	56	875
2/13/10	Davidson	W	73	57	873
2/16/08	Eastern Kentucky	W	71	48	873
2/25/17	Mercer	L	68	76	868
2/25/12	Appalachian State	L	53	57	821
2/15/10	Appalachian State	L	55	66	813
2/6/16	Western Carolina	W	57	52	811
11/13/07	Alabama	W	48	46	753
2/12/11	Appalachian State	L	53	61	743
1/30/10	UNC Greensboro	W	54	51	733
1/17/09	Appalachian State	W	87	51	733
1/12/08	Tennessee Tech	W	64	45	733

BY THE NUMBERS

404

Samford has won 404 games on the hardwood in 29 years as a basketball program.

5

The **Bulldogs** have captured five SoCon championships in the program's history.

1,715

The 25-26 season started with breaking the attendance record for a WBB crowd at The Pete with **1,715**.



MATT WISE

HEAD COACH • 1ST SEASON • TRANSYLVANIA

MATT WISE / HEAD COACH

» Birthdate:	October 18
» Alma Mater:	Transylvania, 2011
» Hometown:	Gainesville, Fla.
» Family:	Wife: Katie Children: Addy & Jack
» Record at Samford:	6-9 (1st season)
» Overall Record:	6-9 (1st season)
» NCAA Tournament Appearances:	N/A
» Championships:	N/A



BULLDOG BITES

1

This is Wise's first season as a collegiate head coach.

3

Wise was previously the Bulldogs assistant coach for three years.



YEAR-BY-YEAR RECORD

YEAR	SCHOOL	OVERALL	CONF	NOTES
2025-26	Samford	6-9	0-0	1st Season
TOTALS		6-9	0-0	



1

JADA KNIGHT

GUARD • 5-7 • SR. • HOOVER, ALA. • BUTLER CC

Senior (2024-2025): Played in 19 games, all as a reserve ... averaged 1.3 points per game ... scored a season-high nine points against Berry College ... also tallied seven points against Wofford.

Junior (2023-24): Saw action in 22 games, starting six contests ... averaged 1.7 points and 1.2 assists per game ... scored a season-high 10 points against Western Carolina ... tallied eight points and four assists at Furman.

Previous College: Came to Samford from Butler Community College ... averaged 5.0 points, 3.0 rebounds and 3.0 assists per game ... was a two-year starter at Butler.

High School: Attended nearby Hoover High School ... was a two-time member of the Class 7A Area 5 All-Area team ... was also a two-time member of the North



2025-26 GAME-BY-GAME

DATE	OPPONENT	GS	MIN	FGM/A	%	3FG/A	%	FTM/A	%	OFF	DEF	TOT	AVG	PF	AST	T/O	BLK	STL	PTS	AVG
11/3	MONTEVALLO	*	24	4-13	.308	0-3	.000	0-0	.000	0	0	0	0.0	1	5	1	0	2	8	8.0
11/8	NEBRASKA	*	11	0-4	.000	0-2	.000	0-0	.000	0	0	0	0.0	3	1	3	0	0	0	4.0
11/13	FLORIDA		18	2-4	.500	0-1	.000	2-2	1.000	1	1	2	0.7	0	0	0	0	1	6	4.7
11/15	FLORIDA A&M		15	3-6	.500	1-2	.500	0-0	.000	0	2	2	1.0	1	2	2	0	0	7	5.3
11/19	ALABAMA		15	1-4	.250	0-1	.000	0-0	.000	0	1	1	1.0	0	2	3	0	0	2	4.6
11/21	STILLMAN		16	3-6	.500	0-1	.000	3-4	.750	1	1	2	1.2	1	4	1	0	5	9	5.3
11/24	CENTRAL ARK	*	26	1-5	.200	0-0	.000	4-4	1.000	0	2	2	1.3	2	3	2	0	0	6	5.4
11/25	GEORGIA STATE	*	26	7-11	.636	1-2	.500	2-2	1.000	1	2	3	1.5	4	5	2	0	0	17	6.9
11/26	STONY BROOK	*	37	5-8	.625	0-1	.000	0-0	.000	0	4	4	1.8	2	5	2	0	0	10	7.2
12/1	MINNESOTA	*	22	0-7	.000	0-0	.000	0-0	.000	0	0	0	1.6	1	2	2	0	0	0	6.5
12/4	TENNESSEE TECH		11	0-4	.000	0-1	.000	3-4	.750	0	1	1	1.5	3	2	2	0	0	3	6.2
12/7	NORTH ALABAMA		21	4-6	.667	0-0	.000	1-2	.500	0	2	2	1.6	1	0	3	0	0	9	6.4
12/14	USC UPSTATE		24	3-5	.600	0-0	.000	0-4	.000	1	1	2	1.6	1	5	2	0	7	6	6.4
12/18	LIPSCOMB		18	1-4	.250	0-0	.000	0-0	.000	0	0	0	1.5	1	1	1	0	1	2	6.1
12/22	UAB		13	1-4	.250	0-1	.000	0-0	.000	1	1	2	1.5	1	0	1	0	0	2	5.8

CAREER HIGHS

CATEGORY	STAT	LATEST DATE	LATEST OPP.
Points	17	11/25/25	Georgia State
Field Goals Made	7	11/25/25	Georgia State
Field Goal Attempts	13	11/3/25	Montevallo
3-Point Field Goals Made	1	1/25/25	Wofford
3-Point Field Goal Attempts	3	11/3/25	Montevallo
Free Throws Made	2	1/25/25	Wofford
Free Throw Attempts	4	1/18/24	WCU
Rebounds	5	1/18/24	WCU
Assists	5	11/25/25	Georgia State
Blocks	0	n/a	n/a
Steals	7	12/14/25	USC Upstate





2

AVARY BREWER

GUARD • 5-7 • FR. • CLEVELAND, TENN. • BRADLEY CENTRAL HS

High School: Prepped at Bradley Central High School ... helped lead her team to a 35-1 record, winning a state title and finishing ranked No. 4 in the final MaxPreps Top 25 in 2024-25 ... led the team with 19 points in the state championship game ... the state title was the third-straight for Bradley Central ... was named All-District, All-District Tournament, All-Region Tournament and All-State Tournament.



2025-26 GAME-BY-GAME

DATE	OPPONENT	GS	MIN	FGM/A	%	3FG/A	%	FTM/A	%	OFF	DEF	TOT	AVG	PF	AST	T/O	BLK	STL	PTS	AVG
11/3	MONTEVALLO		14	1-3	.333	0-1	.000	0-0	.000	0	3	3	3.0	4	1	3	0	1	2	2.0
11/8	NEBRASKA		21	0-6	.000	0-4	.000	0-0	.000	0	2	2	2.5	3	1	3	0	0	0	1.0
11/13	FLORIDA		12	0-4	.000	0-3	.000	2-2	1.000	0	1	1	2.0	2	0	1	0	0	2	1.3
11/15	FLORIDA A&M		7	0-2	.000	0-1	.000	0-0	.000	0	1	1	1.8	2	1	1	0	0	0	1.0
11/19	ALABAMA		14	1-4	.250	1-2	.500	0-0	.000	0	2	2	1.8	3	1	2	0	1	3	1.4
11/21	STILLMAN		26	5-12	.417	3-9	.333	1-1	1.000	2	4	6	2.5	3	3	2	0	2	14	3.5
11/24	CENTRAL ARK		17	2-7	.286	1-3	.333	0-0	.000	1	1	2	2.4	2	1	2	0	1	5	3.7
11/25	GEORGIA STATE		14	1-2	.500	1-2	.500	2-2	1.000	0	0	0	2.1	3	1	3	0	0	5	3.9
11/26	STONY BROOK		12	1-3	.333	1-3	.333	0-0	.000	0	0	0	1.9	2	0	0	0	2	3	3.8
12/1	MINNESOTA		23	5-9	.556	4-5	.800	3-4	.750	0	1	1	1.8	1	0	2	0	0	17	5.1
12/4	TENNESSEE TECH		13	0-0	.000	0-0	.000	4-4	1.000	0	0	0	1.6	3	0	0	0	0	4	5.0
12/7	NORTH ALABAMA		5	0-2	.000	0-2	.000	0-0	.000	0	1	1	1.6	0	0	1	0	0	0	4.6
12/14	USC UPSTATE		14	2-5	.400	1-2	.500	0-0	.000	1	2	3	1.7	2	0	0	0	0	5	4.6
12/18	LIPSCOMB		6	1-4	.250	1-3	.333	0-0	.000	1	1	2	1.7	0	0	0	0	2	3	4.5
12/22	UAB		10	0-2	.000	0-2	.000	0-0	.000	0	2	2	1.7	2	1	1	0	0	0	4.2

CAREER HIGHS

CATEGORY	STAT	DATE	OPPONENT
Points	17	12/1/25	Minnesota
Field Goals Made	5	11/21/25	Stillman
Field Goal Attempts	12	11/21/25	Stillman
3-Point Field Goals Made	4	12/1/25	Minnesota
3-Point Field Goal Attempts	9	11/21/25	Stillman
Free Throws Made	3	12/1/25	Minnesota
Free Throw Attempts	4	12/1/25	Minnesota
Rebounds	6	11/21/25	Stillman
Assists	3	11/21/25	Stillman
Blocks	0		
Steals	2	11/26/25	Stony Brook





3

KAYLEE YARBROUGH

GUARD • 5-9 • FR. • NEW HOPE, ALA. • NEW HOPE HS



High School: Prepped at New Hope High School in Alabama . . . was a starter for New Hope High School from the seventh grade on . . . as a junior, she reached the 2,000-point mark and was named the 4A Region MVP for two-straight seasons . . . was also named the MVP of the Area Tournament . . . was named All-State by the Alabama Sports Writers Association, and she earned All-Tennessee Valley honors . . . played in the North/South All-Star Game, and she holds her school's record for three-pointers in a game.

2025-26 GAME-BY-GAME

DATE	OPPONENT	GS	MIN	FGM/A	%	3FG/A	%	FTM/A	%	OFF	DEF	TOT	AVG	PF	AST	T/O	BLK	STL	PTS	AVG
11/3	MONTEVALLO		11	2-5	.400	1-4	.250	2-2	1.000	0	0	0	0.0	4	1	1	0	2	7	7.0
11/8	NEBRASKA		19	2-8	.250	1-5	.200	0-0	.000	0	1	1	0.5	1	0	5	0	2	5	6.0
11/13	FLORIDA		22	2-9	.222	1-5	.200	2-2	1.000	0	1	1	0.7	0	0	1	0	1	7	6.3
11/15	FLORIDA A&M		16	2-4	.500	2-4	.500	9-10	.900	0	1	1	0.8	0	1	0	0	0	15	8.5
11/19	ALABAMA		24	2-11	.182	1-6	.167	0-0	.000	0	1	1	0.8	1	0	1	0	1	5	7.8
11/21	STILLMAN	*	29	7-13	.538	5-8	.625	0-0	.000	3	2	5	1.5	4	1	2	0	2	19	9.7
11/24	CENTRAL ARK		24	3-12	.250	2-6	.333	0-0	.000	0	1	1	1.4	3	1	2	0	1	8	9.4
11/25	GEORGIA STATE		20	3-10	.300	2-7	.286	0-0	.000	0	1	1	1.4	2	0	1	0	0	8	9.3
11/26	STONY BROOK		0	0-0	.000	0-0	.000	0-0	.000	0	0	0	0.0	0	0	0	0	0	0	0.0
12/1	MINNESOTA		0	0-0	.000	0-0	.000	0-0	.000	0	0	0	0.0	0	0	0	0	0	0	0.0
12/4	TENNESSEE TECH		20	7-10	.700	1-3	.333	0-3	.000	0	1	1	1.3	1	0	1	1	0	15	9.9
12/7	NORTH ALABAMA		23	7-15	.467	2-4	.500	4-4	1.000	0	1	1	1.3	1	1	1	0	0	20	10.9
12/14	USC UPSTATE		23	10-18	.556	5-9	.556	4-7	.571	0	3	3	1.5	0	0	0	0	0	29	12.5
12/18	LIPSCOMB		21	7-15	.467	3-8	.375	0-0	.000	0	7	7	1.9	1	1	3	0	0	17	12.9
12/22	UAB		22	5-12	.417	1-4	.250	2-3	.667	0	3	3	2.0	1	1	0	2	2	13	12.9

CAREER HIGHS

CATEGORY	STAT	LATEST DATE	LATEST OPP.
Points	29	12/14/25	USC Upstate
Field Goals Made	10	12/14/25	USC Upstate
Field Goal Attempts	18	12/14/25	USC Upstate
3-Point Field Goals Made	5	12/14/25	USC Upstate
3-Point Field Goal Attempts	9	12/14/25	USC Upstate
Free Throws Made	9	11/15/25	Florida A&M
Free Throw Attempts	10	11/15/25	Florida A&M
Rebounds	5	11/21/25	Stillman
Assists	1	12/7/25	North Ala.
Blocks	1	12/4/25	Tennessee Tech
Steals	2	11/3/25	Montevallo





4

CAMRYN REGISTER

GUARD • 5-7 • FR. • LAWRENCEVILLE, GA. • HEBRON CHRISTIAN ACADEMY

High School: Prepped at Hebron Christian Academy in Georgia . . . helped lead her team to two state titles and one runner-up finish . . . named to the Region 8-AA All-Region team.



2025-26 GAME-BY-GAME

DATE	OPPONENT	GS	MIN	FGM/A	%	3FG/A	%	FTM/A	%	OFF	DEF	TOT	AVG	PF	AST	T/O	BLK	STL	PTS	AVG
11/3	MONTEVALLO	2	0-0	.000	0-0	.000	0-0	.000	0	0	0	0.0	1	0	0	0	0	0	0	0.0
11/8	NEBRASKA	2	0-0	.000	0-0	.000	0-0	.000	0	0	0	0.0	0	0	0	0	0	0	0	0.0
11/13	FLORIDA	0	0-0	.000	0-0	.000	0-0	.000	0	0	0	0.0	0	0	0	0	0	0	0	0.0
11/15	FLORIDA A&M	0	0-0	.000	0-0	.000	0-0	.000	0	0	0	0.0	0	0	0	0	0	0	0	0.0
11/19	ALABAMA	2	0-0	.000	0-0	.000	0-0	.000	0	0	0	0.0	0	0	0	0	0	0	0	0.0
11/21	STILLMAN	13	3-6	.500	0-2	.000	1-2	.500	0	1	1	0.3	3	0	3	0	1	7	1.8	1.8
11/24	CENTRAL ARK	3	0-0	.000	0-0	.000	1-2	.500	0	1	1	0.4	0	0	0	0	0	1	1.6	1.6
11/25	GEORGIA STATE	0	0-0	.000	0-0	.000	0-0	.000	0	0	0	0.0	0	0	0	0	0	0	0	0.0
11/26	STONY BROOK	0	0-0	.000	0-0	.000	0-0	.000	0	0	0	0.0	0	0	0	0	0	0	0	0.0
12/1	MINNESOTA	3	0-0	.000	0-0	.000	0-0	.000	0	0	0	0.3	0	0	0	0	0	0	0	1.3
12/4	TENNESSEE TECH	3	0-0	.000	0-0	.000	0-2	.000	0	0	0	0.3	0	0	0	0	0	0	0	1.1
12/7	NORTH ALABAMA	0	0-0	.000	0-0	.000	0-0	.000	0	0	0	0.0	0	0	0	0	0	0	0	0.0
12/14	USC UPSTATE	0	0-0	.000	0-0	.000	0-0	.000	0	0	0	0.0	0	0	0	0	0	0	0	0.0
12/18	LIPSCOMB	0	0-0	.000	0-0	.000	0-0	.000	0	0	0	0.0	0	0	0	0	0	0	0	0.0
12/22	UAB	1	0-1	.000	0-0	.000	0-0	.000	0	0	0	0.3	0	0	0	0	0	0	0	1.0

CAREER HIGHS

CATEGORY	STAT	DATE	OPPONENT
Points	7	11/21/25	Stillman
Field Goals Made	3	11/21/25	Stillman
Field Goal Attempts	6	11/21/25	Stillman
3-Point Field Goals Made	0		
3-Point Field Goal Attempts	2	11/21/25	Stillman
Free Throws Made	1	11/24/25	Central Arkansas
Free Throw Attempts	2	11/24/25	Central Arkansas
Rebounds	1	11/24/25	Central Arkansas
Assists	0		
Blocks	0		
Steals	1	11/21/25	Stillman





5

FRANCIE MORRIS

GUARD • 5-9 • FR. • MONTGOMERY, ALA. • TRINITY PRESBYTERIAN HS



High School: Prepped at Trinity Presbyterian High School in Montgomery . . . helped lead her team to three-straight state titles, earning All-State Tournament honors all three years . . . as a junior, averaged 15 points, six rebounds and five assists per game . . . was named second team All-State and earned Regional Tournament MVP honors . . . scored over 1,000 career points before her senior season.

2025-26 GAME-BY-GAME

DATE	OPPONENT	GS	MIN	FGM/A	%	3FG/A	%	FTM/A	%	OFF	DEF	TOT	AVG	PF	AST	T/O	BLK	STL	PTS	AVG
11/3	MONTEVALLO	*	25	5-9	.556	2-5	.400	0-2	.000	4	2	6	6.0	3	1	1	0	2	12	12.0
11/8	NEBRASKA	*	21	1-5	.200	0-2	.000	2-2	1.000	1	1	2	4.0	3	0	2	0	2	4	8.0
11/13	FLORIDA	*	23	1-5	.200	1-2	.500	0-0	.000	3	2	5	4.3	4	1	2	0	2	3	6.3
11/15	FLORIDA A&M	*	26	3-4	.750	2-3	.667	1-2	.500	1	1	2	3.8	4	2	2	2	0	9	7.0
11/19	ALABAMA	*	12	2-4	.500	0-1	.000	0-0	.000	0	1	1	3.2	3	0	2	0	1	4	6.4
11/21	STILLMAN		0	0-0	.000	0-0	.000	0-0	.000	0	0	0	0.0	0	0	0	0	0	0	0.0
11/24	CENTRAL ARK	*	24	2-5	.400	2-3	.667	2-2	1.000	2	1	3	3.2	2	1	1	0	0	8	6.7
11/25	GEORGIA STATE	*	22	0-3	.000	0-3	.000	0-0	.000	0	2	2	3.0	2	3	2	0	0	0	5.7
11/26	STONY BROOK	*	28	3-5	.600	1-2	.500	0-0	.000	3	3	6	3.4	4	2	2	0	1	7	5.9
12/1	MINNESOTA	*	28	0-5	.000	0-4	.000	2-2	1.000	0	1	1	3.1	3	2	3	1	2	2	5.4
12/4	TENNESSEE TECH	*	21	2-8	.250	0-2	.000	0-0	.000	2	0	2	3.0	5	1	1	0	0	4	5.3
12/7	NORTH ALABAMA	*	29	3-5	.600	1-3	.333	5-6	.833	1	5	6	3.3	2	0	1	0	0	12	5.9
12/14	USC UPSTATE	*	13	2-4	.500	1-2	.500	2-2	1.000	1	1	2	3.2	2	0	1	0	0	7	6.0
12/18	LIPSCOMB	*	19	1-2	.500	1-1	1.000	4-6	.667	4	4	8	3.5	2	1	1	0	1	7	6.1
12/22	UAB	*	22	1-3	.333	0-2	.000	0-0	.000	1	3	4	3.6	1	2	0	0	1	2	5.8

CAREER HIGHS

CATEGORY	STAT	DATE	OPPONENT
Points	12	11/3/25	Montevallo
Field Goals Made	5	11/3/25	Montevallo
Field Goal Attempts	9	11/3/25	Montevallo
3-Point Field Goals Made	2	11/24/25	Central Arkansas
3-Point Field Goal Attempts	5	11/3/25	Montevallo
Free Throws Made	2	11/24/25	Central Arkansas
Free Throw Attempts	5	11/3/25	Montevallo
Rebounds	6	11/26/25	Stony Brook
Assists	3	11/25/25	Georgia State
Blocks	2	11/15/25	Florida A&M
Steals	2	11/3/25	Montevallo





10

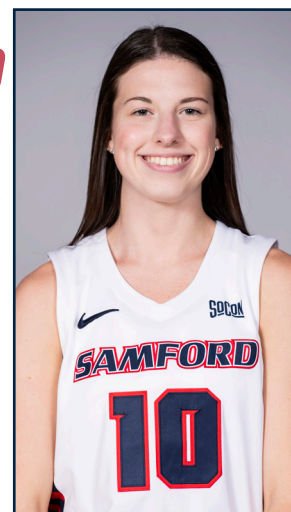
AUBREY BLANKENSHIP

GUARD/FORWARD • 6-0 • R-FR. • MT. JULIET, TENN. • GREEN HILL HS

RS-Freshman (2024-25): Played in 31 games, starting 16 contests ... averaged 5.0 points and 2.9 rebounds per game ... scored a career-high 17 points against Eastern Kentucky ... tallied 13 points against Berry and 10 points at Chattanooga ... had 15 points each against Furman and UNC Greensboro.

Redshirt (2023-24): Saw action in nine games ... averaged 2.3 points per game ... scored five points against Alabama State ... tallied a season-high seven points against LaGrange.

High School: Prepped at Green Hill High School in Mount Juliet, Tennessee ... started three years for her team ... for her career, tallied 1,563 points, 658 rebounds, 162 assists, 92 steals and 36 blocked shots ... was a two-time team captain ... was named All-District three times, District Tournament MVP (2021-22), District Tournament Team (2022-23), All-District Defensive Team (2022-23), Region Tournament team (2022-23), State Tournament team (2022-23), BCAT All-Star (2022-23), BCAT All-Academic (2023-24), Tennessee Report Class 4A All-State team (2022-23) and Tennessee Sports Writers Association All-State (2022-23).



2025-26 GAME-BY-GAME

DATE	OPPONENT	GS	MIN	FGM/A	%	3FG/A	%	FTM/A	%	OFF	DEF	TOT	AVG	PF	AST	T/O	BLK	STL	PTS	AVG
11/3	MONTEVALLO	*	24	4-11	.364	2-6	.333	3-4	.750	1	4	5	5.0	1	4	0	0	2	13	13.0
11/8	NEBRASKA	*	26	3-7	.429	2-4	.500	0-0	.000	0	4	4	4.5	3	0	1	0	1	8	10.5
11/13	FLORIDA	*	22	0-5	.000	0-4	.000	0-0	.000	0	0	0	3.0	2	0	2	0	0	0	7.0
11/15	FLORIDA A&M	*	29	3-6	.500	0-3	.000	0-0	.000	0	4	4	3.3	1	0	2	0	1	6	6.8
11/19	ALABAMA	*	10	0-1	.000	0-1	.000	0-0	.000	0	2	2	3.0	1	0	1	0	0	0	5.4
11/21	STILLMAN	*	18	2-11	.182	1-4	.250	0-0	.000	2	5	7	3.7	0	3	1	0	0	5	5.3
11/24	CENTRAL ARK	*	17	0-3	.000	0-2	.000	0-0	.000	1	2	3	3.6	0	0	0	0	0	0	4.6
11/25	GEORGIA STATE	*	30	1-4	.250	1-4	.250	0-0	.000	0	6	6	3.9	1	2	4	0	0	3	4.4
11/26	STONY BROOK	*	37	3-9	.333	3-8	.375	0-0	.000	0	2	2	3.7	2	1	1	1	1	9	4.9
12/1	MINNESOTA	*	24	1-5	.200	0-3	.000	0-0	.000	0	4	4	3.7	0	0	1	0	0	2	4.6
12/4	TENNESSEE TECH	*	31	2-7	.286	1-3	.333	0-0	.000	1	1	2	3.5	3	0	2	1	1	5	4.6
12/7	NORTH ALABAMA	*	43	4-13	.308	3-9	.333	0-0	.000	0	5	5	3.7	1	0	1	0	1	11	5.2
12/14	USC UPSTATE	*	27	2-7	.286	2-7	.286	1-2	.500	1	2	3	3.6	1	1	4	0	0	7	5.3
12/18	LIPSCOMB	*	35	2-8	.250	1-7	.143	0-0	.000	0	6	6	3.8	0	2	0	0	2	5	5.3
12/22	UAB	*	35	3-11	.273	3-9	.333	1-2	.500	1	6	7	4.0	0	2	5	0	0	10	5.6

CAREER HIGHS

CATEGORY	STAT	DATE	OPPONENT
Points	17	12/29/24	Eastern Ky.
Field Goals Made	7	12/29/24	Eastern Ky.
Field Goal Attempts	11	11/3/25	Montevallo
3-Point Field Goals Made	3	12/29/24	Eastern Ky.
3-Point Field Goal Attempts	8	11/26/25	Stony Brook
Free Throws Made	3	11/3/25	Montevallo
Free Throw Attempts	4	11/3/25	Montevallo
Rebounds	8	11/17/24	Fisk
Assists	4	11/3/25	Montevallo
Blocks	1	6 times	
Steals	2	11/3/25	Montevallo





11

BRIANA RIVERA

GUARD • 5-5 • SO. • ORLANDO, FLA. • AUSTIN PEAY

Previous College: Spent the 2024-25 season at Austin Peay ... played in 26 games, making three starts, averaging 12.4 minutes per game ... averaged 3.7 points per game with a career-high 12 points at North Alabama ... led the team with a 36.5 three-point percentage, with a careerhigh of four made three-pointers at North Alabama ... had four steals against Mercer.

High School: Prepped at Lake Highland Prep ... was an All-Area honorable mention for all four years of high school ... averaged 12 points per game in her career, placing her in the Lake Highland Prep 1,000-point club ... played AAU for the team Jsizzle under coach Ed Soto ... led the Adidas Circuit in made three pointers and was named an Adidas All-American.



2025-26 GAME-BY-GAME

DATE	OPPONENT	GS	MIN	FGM/A	%	3FG/A	%	FTM/A	%	OFF	DEF	TOT	AVG	PF	AST	T/O	BLK	STL	PTS	AVG
11/3	MONTEVALLO	*	29	5-14	.357	5-14	.357	3-3	1.000	0	4	4	4.0	1	0	4	0	1	18	18.0
11/8	NEBRASKA	*	25	5-8	.625	4-7	.571	0-0	.000	0	0	0	2.0	4	0	1	0	0	14	16.0
11/13	FLORIDA	*	23	3-9	.333	3-9	.333	1-2	.500	0	3	3	2.3	1	0	1	0	0	10	14.0
11/15	FLORIDA A&M	*	33	5-13	.385	5-12	.417	0-0	.000	0	2	2	2.3	3	2	1	0	0	15	14.3
11/19	ALABAMA	*	28	3-9	.333	3-9	.333	0-0	.000	0	1	1	2.0	1	0	1	0	1	9	13.2
11/21	STILLMAN	*	16	7-11	.636	7-11	.636	0-0	.000	1	0	1	1.8	0	1	0	0	1	21	14.5
11/24	CENTRAL ARK	*	25	3-10	.300	3-10	.300	0-0	.000	0	3	3	2.0	1	1	1	1	0	9	13.7
11/25	GEORGIA STATE	*	30	8-22	.364	8-22	.364	0-0	.000	0	3	3	2.1	1	1	1	1	0	24	15.0
11/26	STONY BROOK	*	40	2-9	.222	2-8	.250	1-2	.500	0	0	0	1.9	0	3	2	0	1	7	14.1
12/1	MINNESOTA	*	27	2-6	.333	2-6	.333	3-3	1.000	0	1	1	1.8	0	0	0	0	0	9	13.6
12/4	TENNESSEE TECH	*	22	3-8	.375	2-7	.286	2-2	1.000	0	0	0	1.6	1	0	0	0	0	10	13.3
12/7	NORTH ALABAMA	*	31	1-6	.167	1-6	.167	0-0	.000	0	5	5	1.9	1	1	0	0	1	3	12.4
12/14	USC UPSTATE	*	28	3-10	.300	3-8	.375	3-6	.500	0	3	3	2.0	1	1	1	0	0	12	12.4
12/18	LIPSCOMB	*	34	4-16	.250	4-15	.267	0-0	.000	0	1	1	1.9	1	0	2	0	0	12	12.4
12/22	UAB	*	26	0-2	.000	0-2	.000	2-3	.667	0	2	2	1.9	1	2	0	0	0	2	11.7

CAREER HIGHS

CATEGORY	STAT	DATE	OPPONENT
Points	24	11/25/25	Georgia State
Field Goals Made	8	11/25/25	Georgia State
Field Goal Attempts	22	11/25/25	Georgia State
3-Point Field Goals Made	8	11/25/25	Georgia State
3-Point Field Goal Attempts	22	11/25/25	Georgia State
Free Throws Made	3	11/3/25	Montevallo
Free Throw Attempts	3	11/3/25	Montevallo
Rebounds	4	11/3/25	Montevallo
Assists	3	11/26/25	Stony Brook
Blocks	1	11/25/25	Georgia State
Steals	*4	11/24/24	Mercer

*Previous School





12

CARLA BAGUDA

GUARD • 6-2 • FR. • BARCELONA, SPAIN • INSTITUT MONTILIVI

High School: Comes to Samford from Barcelona, Spain ... played for the club team Uni Girona ... her club team finished first in Catalonia and sixth in all of Spain.



2025-26 GAME-BY-GAME

DATE	OPPONENT	GS	MIN	FGM/A	%	3FG/A	%	FTM/A	%	OFF	DEF	TOT	AVG	PF	AST	T/O	BLK	STL	PTS	AVG
11/3	MONTEVALLO		24	2-4	.500	0-0	.000	0-0	.000	5	6	11	11.0	1	0	0	3	1	4	4.0
11/8	NEBRASKA		17	1-2	.500	0-0	.000	0-0	.000	1	5	6	8.5	1	0	1	2	0	2	3.0
11/13	FLORIDA		12	0-0	.000	0-0	.000	0-0	.000	1	2	3	6.7	4	0	4	1	0	0	2.0
11/15	FLORIDA A&M		24	4-5	.800	0-0	.000	2-3	.667	2	3	5	6.3	3	0	1	0	0	10	4.0
11/19	ALABAMA		22	1-2	.500	0-0	.000	1-2	.500	2	5	7	6.4	2	0	0	3	0	3	3.8
11/21	STILLMAN	*	11	1-1	1.000	0-0	.000	0-0	.000	1	2	3	5.8	3	1	2	1	2	2	3.5
11/24	CENTRAL ARK		21	1-2	.500	0-0	.000	0-2	.000	2	3	5	5.7	2	0	4	0	0	2	3.3
11/25	GEORGIA STATE		5	0-0	.000	0-0	.000	0-0	.000	0	2	2	5.3	0	0	0	0	0	0	2.9
11/26	STONY BROOK		0	0-0	.000	0-0	.000	0-0	.000	0	0	0	0.0	0	0	0	0	0	0	0.0
12/1	MINNESOTA		0	0-0	.000	0-0	.000	0-0	.000	0	0	0	0.0	0	0	0	0	0	0	0.0
12/4	TENNESSEE TECH		0	0-0	.000	0-0	.000	0-0	.000	0	0	0	0.0	0	0	0	0	0	0	0.0
12/7	NORTH ALABAMA		0	0-0	.000	0-0	.000	0-0	.000	0	0	0	0.0	0	0	0	0	0	0	0.0
12/14	USC UPSTATE	*	28	2-3	.667	0-0	.000	0-0	.000	1	6	7	5.4	3	1	0	5	3	4	3.0
12/18	LIPSCOMB	*	18	1-1	1.000	0-0	.000	0-2	.000	1	3	4	5.3	5	1	2	0	0	2	2.9
12/22	UAB	*	17	3-5	.600	0-0	.000	0-2	.000	3	1	4	5.2	1	0	0	1	0	6	3.2

CAREER HIGHS

CATEGORY	STAT	DATE	OPPONENT
Points	10	11/15/25	Florida A&M
Field Goals Made	4	11/15/25	Florida A&M
Field Goal Attempts	5	11/15/25	Florida A&M
3-Point Field Goals Made	0		
3-Point Field Goal Attempts	0		
Free Throws Made	2	11/15/25	Florida A&M
Free Throw Attempts	3	11/15/25	Florida A&M
Rebounds	11	11/3/25	Montevallo
Assists	0		
Blocks	3	11/3/25	Montevallo
Steals	1	11/3/25	Montevallo





20 ALYSSA TARPLEY

GUARD • 5-10 • SR. • GUNTER, TEXAS • GUNTER HS



Junior (2024-25): Played in 19 games as a reserve ... averaged 2.3 points and 1.2 rebounds per game ... scored nine points at North Florida ... tallied six points against Miles College and six more against Florida A&M.

Sophomore (2023-24): Saw action in 28 games, including seven starts ... averaged 1.8 points and 1.5 rebounds per game ... scored eight points in the season opener against AUM ... tallied a season-high 10 points against Wofford ... scored eight points in the Southern Conference Tournament against Wofford.

Freshman (2022-23): Appeared in 30 games, starting all 30... averaged 4.0 points per game, 2.4 rebounds and 0.9 assist per game... shot 34 percent from the floor, 35 percent from three and 30 percent from the line... scored a season-high 11 points against Northern Colorado on 12/21... made her Bulldog debut and first career start in the season opener against Troy on 11/7.

2025-26 GAME-BY-GAME

DATE	OPPONENT	GS	MIN	FGM/A	%	3FG/A	%	FTM/A	%	OFF	DEF	TOT	AVG	PF	AST	T/O	BLK	STL	PTS	AVG
11/3	MONTEVALLO		14	0-2	.000	0-0	.000	0-0	.000	2	1	3	3.0	1	1	0	0	1	0	0.0
11/8	NEBRASKA		10	0-1	.000	0-1	.000	0-0	.000	0	1	1	2.0	0	0	0	0	0	0	0.0
11/13	FLORIDA		14	0-1	.000	0-1	.000	0-0	.000	0	1	1	1.7	1	2	1	0	0	0	0.0
11/15	FLORIDA A&M		11	1-2	.500	0-1	.000	1-1	1.000	0	1	1	1.5	2	4	0	0	1	3	0.8
11/19	ALABAMA		23	0-1	.000	0-1	.000	0-0	.000	0	1	1	1.4	1	1	0	0	1	0	0.6
11/21	STILLMAN		12	0-1	.000	0-1	.000	0-0	.000	0	1	1	1.3	2	2	2	0	1	0	0.5
11/24	CENTRAL ARK		16	0-0	.000	0-0	.000	0-0	.000	1	2	3	1.6	2	0	2	0	0	0	0.4
11/25	GEORGIA STATE		13	1-2	.500	1-2	.500	0-0	.000	0	0	0	1.4	1	0	0	0	0	3	0.8
11/26	STONY BROOK		8	0-1	.000	0-0	.000	0-0	.000	0	2	2	1.4	1	1	2	1	0	0	0.7
12/1	MINNESOTA		12	0-2	.000	0-2	.000	0-0	.000	0	1	1	1.4	1	3	1	0	0	0	0.6
12/4	TENNESSEE TECH	*	30	0-0	.000	0-0	.000	0-0	.000	0	2	2	1.5	2	2	0	0	2	0	0.5
12/7	NORTH ALABAMA	*	35	0-2	.000	0-1	.000	0-0	.000	0	3	3	1.6	2	2	1	0	0	0	0.5
12/14	USC UPSTATE		17	0-1	.000	0-1	.000	0-0	.000	0	2	2	1.6	1	1	1	2	1	0	0.5
12/18	LIPSCOMB		26	1-2	.500	0-0	.000	0-0	.000	0	2	2	1.6	3	0	1	0	0	2	0.6
12/22	UAB		16	0-1	.000	0-0	.000	1-2	.500	1	3	4	1.8	0	0	0	1	0	1	0.6

CAREER HIGHS

CATEGORY	STAT	DATE	OPPONENT
Points	11	12/21/22	Northern Colo.
Field Goals Made	4	11/6/23	AUM
Field Goal Attempts	11	1/26/23	Furman
3-Point Field Goals Made	3	Four times	
3-Point Field Goal Attempts	11	1/26/23	Furman
Free Throws Made	3	12/8/24	Miles
Free Throw Attempts	3	12/8/24	Miles
Rebounds	6	02/22/24	Wofford
Assists	4	11/22/22	Talladega
Blocks	1	1/4/25	Berry
Steals	3	12/21/22	Northern Colo.





21

SYDNEY MARTIN

GUARD • 5-10 • R-FR. • SOMERSET, KY. • NORTHERN KENTUCKY UNIVERSITY

Previous College: Spent the 2024-25 season at Northern Kentucky University ... saw no game action and received a redshirt.

High School: Prepped at Pulaski County High School ... was a two-time Commonwealth Journal Girls' Basketball Player of the Year ... averaged 21.5 points and 7.7 rebounds per game in her senior season ... shot 49 percent from the field and 35.4 percent from three-point range in her senior year ... set Pulaski County HS record for points in a career.



2025-26 GAME-BY-GAME

DATE	OPPONENT	GS	MIN	FGM/A	%	3FG/A	%	FTM/A	%	OFF	DEF	TOT	AVG	PF	AST	T/O	BLK	STL	PTS	AVG
11/3	MONTEVALLO		2	0-0	.000	0-0	.000	1-2	.500	0	0	0	0.0	1	0	0	0	0	1	1.0
11/8	NEBRASKA		4	0-2	.000	0-0	.000	0-0	.000	1	0	1	0.5	0	0	0	0	1	0	0.5
11/13	FLORIDA		5	0-1	.000	0-1	.000	0-0	.000	0	0	0	0.3	1	0	1	0	0	0	0.3
11/15	FLORIDA A&M		0	0-0	.000	0-0	.000	0-0	.000	0	0	0	0.0	0	0	0	0	0	0	0.0
11/19	ALABAMA		7	2-3	.667	2-3	.667	0-0	.000	0	2	2	0.8	4	0	0	0	0	6	1.8
11/21	STILLMAN		16	2-4	.500	0-2	.000	0-2	.000	2	2	4	1.4	0	1	0	0	2	4	2.2
11/24	CENTRAL ARK		8	1-2	.500	1-1	1.000	0-0	.000	0	1	1	1.3	1	0	0	1	1	3	2.3
11/25	GEORGIA STATE		0	0-0	.000	0-0	.000	0-0	.000	0	0	0	0.0	0	0	0	0	0	0	0.0
11/26	STONY BROOK		0	0-0	.000	0-0	.000	0-0	.000	0	0	0	0.0	0	0	0	0	0	0	0.0
12/1	MINNESOTA		7	0-2	.000	0-2	.000	0-0	.000	0	2	2	1.4	1	0	1	0	0	0	2.0
12/4	TENNESSEE TECH		7	1-2	.500	0-1	.000	0-0	.000	1	2	3	1.6	1	0	1	1	0	2	2.0
12/7	NORTH ALABAMA		2	0-1	.000	0-1	.000	0-0	.000	0	0	0	1.4	0	0	0	0	0	0	1.8
12/14	USC UPSTATE		0	0-0	.000	0-0	.000	0-0	.000	0	0	0	0.0	0	0	0	0	0	0	0.0
12/18	LIPSCOMB		1	0-0	.000	0-0	.000	0-0	.000	0	0	0	1.3	0	0	0	0	0	0	1.6
12/22	UAB		4	0-0	.000	0-0	.000	0-0	.000	0	1	1	1.3	0	0	1	0	0	0	1.5

CAREER HIGHS

CATEGORY	STAT	DATE	OPPONENT
Points	6	11/19/25	Alabama
Field Goals Made	2	11/19/25	Alabama
Field Goal Attempts	4	11/21/25	Stillman
3-Point Field Goals Made	2	11/19/25	Alabama
3-Point Field Goal Attempts	3	11/19/25	Alabama
Free Throws Made	1	11/3/25	Montevallo
Free Throw Attempts	2	11/3/25	Montevallo
Rebounds	4	11/21/25	Stillman
Assists	1	11/21/25	Stillman
Blocks	1	11/24/25	Central Arkansas
Steals	2	11/21/25	Stillman





22

SIERRA GODBOLT

GUARD • 5-6 • SR. • ORLANDO, FLA. • UCF

Junior (2024-25): Saw action in 31 games, starting 17 contests ... averaged 5.4 points and 3.2 assists per game ... scored a season-high 13 points against Western Carolina ... had 12 points at Furman ... also tallied 11 points at Western Carolina ... had 10 points each against Florida A&M and Montevallo.

Previous College: Spent two seasons at UCF ... played in 56 games, including 14 starts ... averaged 2.6 points and 0.9 rebounds per game ... scored a career-high 14 points against Idaho State ... also had 11 points at Tennessee and 10 points at Cincinnati.

High School: Three-time state champion with Lake Highland Prep ... in her junior season, averaged 7.4 points per game, 3.3 assists per game and 2.0 steals per game ... ran in the 4x100, 100m and 200m for Lake Highland Prep Track and Field Team ... was a member of National Honor Society and Boys and Girls Club.



2025-26 GAME-BY-GAME

DATE	OPPONENT	GS	MIN	FGM/A	%	3FG/A	%	FTM/A	%	OFF	DEF	TOT	AVG	PF	AST	T/O	BLK	STL	PTS	AVG
11/3	MONTEVALLO		15	2-3	.667	1-2	.500	3-3	1.000	0	1	1	1.0	0	0	1	0	0	8	8.0
11/8	NEBRASKA		21	3-6	.500	1-2	.500	0-0	.000	0	1	1	1.0	1	5	6	0	0	7	7.5
11/13	FLORIDA	*	21	2-7	.286	1-2	.500	1-2	.500	1	0	1	1.0	2	3	1	0	0	6	7.0
11/15	FLORIDA A&M	*	23	1-8	.125	0-1	.000	1-2	.500	2	3	5	2.0	1	4	1	0	2	3	6.0
11/19	ALABAMA	*	25	3-9	.333	1-3	.333	6-6	1.000	0	0	0	1.6	0	3	3	0	0	13	7.4
11/21	STILLMAN	*	16	3-4	.750	1-1	1.000	0-0	.000	0	2	2	1.7	0	7	2	0	0	7	7.3
11/24	CENTRAL ARK		0	0-0	.000	0-0	.000	0-0	.000	0	0	0	0.0	0	0	0	0	0	0	0.0
11/25	GEORGIA STATE		8	0-0	.000	0-0	.000	0-0	.000	0	0	0	1.4	0	1	1	0	0	0	6.3
11/26	STONY BROOK		0	0-0	.000	0-0	.000	0-0	.000	0	0	0	0.0	0	0	0	0	0	0	0.0
12/1	MINNESOTA		15	4-8	.500	0-2	.000	0-2	.000	1	0	1	1.4	0	1	2	0	1	8	6.5
12/4	TENNESSEE TECH	*	30	4-11	.364	0-2	.000	4-6	.667	1	4	5	1.8	1	2	3	0	1	12	7.1
12/7	NORTH ALABAMA	*	26	4-11	.364	0-2	.000	3-3	1.000	2	1	3	1.9	0	2	2	0	3	11	7.5
12/14	USC UPSTATE	*	16	0-1	.000	0-0	.000	0-0	.000	0	0	0	1.7	1	1	2	0	0	0	6.8
12/18	LIPSCOMB	*	22	6-10	.600	0-2	.000	3-3	1.000	1	3	4	1.9	1	2	4	0	1	15	7.5
12/22	UAB	*	26	4-9	.444	1-2	.500	0-0	.000	1	1	2	1.9	0	4	2	0	1	9	7.6

CAREER HIGHS

CATEGORY	STAT	DATE	OPPONENT
Points	14*	12/20/22	Idaho State
Field Goals Made	5	11/19/24	Montevallo
Field Goal Attempts	9	11/10/24	Memphis
3-Point Field Goals Made	2	11/8/24	Central Arkansas
3-Point Field Goal Attempts	3	6 times	
Free Throws Made	10	2/22/25	Furman
Free Throw Attempts	10	2/22/25	Furman
Rebounds	10	12/20/24	Florida A&M
Assists	10	12/20/24	Florida A&M
Blocks	1	11/14/24	Florida State
Steals	5	12/20/24	Florida A&M

* Previous School





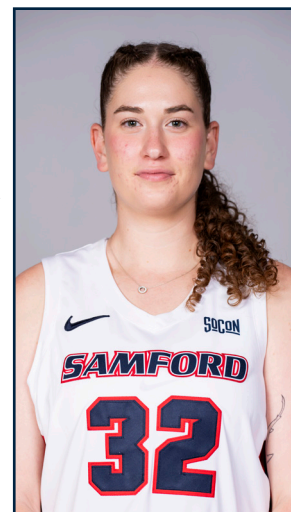
32

Yael Maayan

FORWARD • 6-1 • FR. • YEHUDA, ISRAEL. • HOF HASHARON

Freshman (2024-25): Saw no game action.

High School: Played five years for the Wingate Academy of Sports Excellence in the top U18 league and the women's second division ... won the U18 championship five years in a row ... in her final season, averaged 13 points and 4.2 rebounds per game ... in 2023-24, played for the first division women's team, Ramat HaSharon Women's Basketball Club ... played on the Israeli National Team in the 3x3 and FIBA Tournaments and the 5x5 National Team ... took second place in the 2022 Maccabiah Game with Israel, losing to Team USA in the finals.



2025-26 GAME-BY-GAME

DATE	OPPONENT	GS	MIN	FGM/A	%	3FG/A	%	FTM/A	%	OFF	DEF	TOT	AVG	PF	AST	T/O	BLK	STL	PTS	AVG
11/3	MONTEVALLO	2	0-0	.000	0-0	.000	0-0	.000	0	0	0	0.0	0	0	0	0	0	0	0	0.0
11/8	NEBRASKA	4	0-0	.000	0-0	.000	0-0	.000	0	0	0	0.0	0	0	1	0	0	0	0	0.0
11/13	FLORIDA	8	0-1	.000	0-0	.000	0-0	.000	1	0	1	0.3	1	0	1	0	1	0	0	0.0
11/15	FLORIDA A&M	0	0-0	.000	0-0	.000	0-0	.000	0	0	0	0.0	0	0	0	0	0	0	0	0.0
11/19	ALABAMA	2	0-0	.000	0-0	.000	0-0	.000	0	0	0	0.3	0	0	0	1	0	0	0	0.0
11/21	STILLMAN	11	0-1	.000	0-0	.000	0-0	.000	1	1	2	0.6	2	0	1	1	0	0	0	0.0
11/24	CENTRAL ARK	3	0-0	.000	0-0	.000	0-0	.000	0	0	0	0.5	0	0	0	0	0	0	0	0.0
11/25	GEORGIA STATE	0	0-0	.000	0-0	.000	0-0	.000	0	0	0	0.0	0	0	0	0	0	0	0	0.0
11/26	STONY BROOK	0	0-0	.000	0-0	.000	0-0	.000	0	0	0	0.0	0	0	0	0	0	0	0	0.0
12/1	MINNESOTA	10	0-2	.000	0-1	.000	0-0	.000	0	2	2	0.7	1	0	1	0	0	0	0	0.0
12/4	TENNESSEE TECH	5	0-1	.000	0-0	.000	0-0	.000	0	0	0	0.6	2	0	0	0	0	0	0	0.0
12/7	NORTH ALABAMA	0	0-0	.000	0-0	.000	0-0	.000	0	0	0	0.0	0	0	0	0	0	0	0	0.0
12/14	USC UPSTATE	0	0-0	.000	0-0	.000	0-0	.000	0	0	0	0.0	0	0	0	0	0	0	0	0.0
12/18	LIPSCOMB	0	0-0	.000	0-0	.000	0-0	.000	0	0	0	0.0	0	0	0	0	0	0	0	0.0
12/22	UAB	2	0-1	.000	0-0	.000	0-0	.000	0	0	0	0.6	0	0	0	1	0	0	0	0.0

CAREER HIGHS

CATEGORY	STAT	DATE	OPPONENT
Points	0		
Field Goals Made	0		
Field Goal Attempts	1	11/21/25	Stillman
3-Point Field Goals Made	0		
3-Point Field Goal Attempts	0		
Free Throws Made	0		
Free Throw Attempts	0		
Rebounds	2	11/21/25	Stillman
Assists	0		
Blocks	1	11/21/25	Stillman
Steals	1	11/13/25	Florida





33

MARTHA BISHOP

FORWARD • 6-1 • JR. • SPARTANBURG, S.C. • SPARTANBURG HS



Sophomore (2024-25): Joined the team midseason ... saw action in two games ... grabbed two rebounds, including one offensive board.

High School: Prepped at Spartanburg High School ... played both soccer and basketball ... played basketball from seventh through ninth grade, starting at point guard ... voted Spartanburg High School's best all-around athlete.

2025-26 GAME-BY-GAME

DATE	OPPONENT	GS	MIN	FGM/A	%	3FG/A	%	FTM/A	%	OFF	DEF	TOT	AVG	PF	AST	T/O	BLK	STL	PTS	AVG
11/3	MONTEVALLO		0	0-0	.000	0-0	.000	0-0	.000	0	0	0	0.0	0	0	0	0	0	0	0.0
11/8	NEBRASKA		0	0-0	.000	0-0	.000	0-0	.000	0	0	0	0.0	0	0	0	0	0	0	0.0
11/13	FLORIDA		0	0-0	.000	0-0	.000	0-0	.000	0	0	0	0.0	0	0	0	0	0	0	0.0
11/15	FLORIDA A&M		0	0-0	.000	0-0	.000	0-0	.000	0	0	0	0.0	0	0	0	0	0	0	0.0
11/19	ALABAMA		2	0-0	.000	0-0	.000	0-0	.000	0	0	0	0.0	1	0	0	0	0	0	0.0
11/21	STILLMAN		16	1-5	.200	0-2	.000	0-0	.000	5	7	12	6.0	4	1	2	0	1	2	1.0
11/24	CENTRAL ARK		4	0-0	.000	0-0	.000	0-2	.000	1	1	2	4.7	1	0	1	0	0	0	0.7
11/25	GEORGIA STATE		11	0-1	.000	0-0	.000	0-0	.000	3	2	5	4.8	1	0	1	0	0	0	0.5
11/26	STONY BROOK		11	1-2	.500	0-0	.000	2-2	1.000	0	3	3	4.4	2	1	1	0	0	4	1.2
12/1	MINNESOTA		8	0-1	.000	0-1	.000	0-0	.000	0	3	3	4.2	3	0	0	0	0	0	1.0
12/4	TENNESSEE TECH		7	2-2	1.000	1-1	1.000	0-0	.000	0	1	1	3.7	4	0	2	0	0	5	1.6
12/7	NORTH ALABAMA		10	0-3	.000	0-1	.000	0-0	.000	3	5	8	4.3	0	2	0	1	1	0	1.4
12/14	USC UPSTATE		10	2-4	.500	0-1	.000	0-0	.000	3	2	5	4.3	1	0	1	1	0	4	1.7
12/18	LIPSCOMB		0	0-0	.000	0-0	.000	0-0	.000	0	0	0	0.0	0	0	0	0	0	0	0.0
12/22	UAB		6	2-2	1.000	0-0	.000	0-0	.000	0	2	2	4.1	1	0	2	0	0	4	1.9

CAREER HIGHS

CATEGORY	STAT	DATE	OPPONENT
Points	4	11/26/25	Stony Brook
Field Goals Made	1	11/26/25	Stony Brook
Field Goal Attempts	5	11/21/25	Stillman
3-Point Field Goals Made	0		
3-Point Field Goal Attempts	2	11/21/25	Stillman
Free Throws Made	2	11/26/25	Stony Brook
Free Throw Attempts	2	11/26/25	Stony Brook
Rebounds	12	11/21/25	Stillman
Assists	1	11/26/25	Stony Brook
Blocks	0		
Steals	1	11/21/25	Stillman





44 EMILY BOWMAN

CENTER • 6-5 • R-SR. • HUNTSVILLE, ALA. • VANDERBILT



2024-25 SoCon All-Defensive Team, 2023-24 Third Team All-SoCon, 2023-24 SoCon All-Defensive Team

Redshirt Junior (2024-25): Named to the SoCon's All-Defensive team ... played in 25 games, starting 22 contests ... averaged 9.9 points, 7.4 rebounds and 2.0 blocks per game ... posted six double-doubles on the season ... grabbed a school-record 21 rebounds at North Alabama ... scored a career-high 21 points at Florida State.

Redshirt Sophomore (2023-24): Named third team All-SoCon and All-Defensive team ... played in all 30 games, starting 28 contests ... set school single-season records with 74 blocked shots and 255 rebounds ... set a school record with 19 rebounds against Furman, while also tying the school record for blocked shots in a game with seven in the same contest ... averaged 7.9 points and 8.5 rebounds per game ... had 16 points against AUM ... grabbed 15 rebounds against North Texas ... had 18 rebounds against Jacksonville State ... had 14 points and 14 rebounds against Cumberland ... had 17 points and 10 rebounds against Mercer ... tallied 17 points and 10 rebounds against Wofford ... finished with 12 points, 19 rebounds and seven blocked shots against Furman.

Redshirt Freshman (2022-23): Appeared in 29 games, all off the bench... averaged 3.9 points per game and 2.9 rebounds per game ... shot 52 percent from the floor and 62 percent from the line... collected nine steals and 25 blocks... scored a season-high 12 points against Talladega on 11/22 and Birmingham-Southern on 12/30... made her Bulldog debut in the season opener against Troy on 11/7.

2025-26 GAME-BY-GAME

DATE	OPPONENT	GS	MIN	FGM/A	%	3FGM/A	%	FTM/A	%	OFF	DEF	TOT	AVG	PF	AST	T/O	BLK	STL	PTS	AVG
11/3	MONTEVALLO	*	14	1-3	.333	0-0	.000	0-0	.000	7	4	11	11.0	2	1	4	2	0	2	2.0
11/8	NEBRASKA	*	19	2-2	1.000	0-0	.000	2-2	1.000	2	5	7	9.0	0	1	1	0	0	6	4.0
11/13	FLORIDA	*	20	3-6	.500	0-0	.000	0-0	.000	1	5	6	8.0	1	1	0	1	0	6	4.7
11/15	FLORIDA A&M	*	16	4-5	.800	0-0	.000	1-2	.500	1	3	4	7.0	4	0	1	0	0	9	5.8
11/19	ALABAMA	*	14	0-3	.000	0-0	.000	0-0	.000	2	2	4	6.4	0	1	1	0	0	0	4.6
11/21	STILLMAN		0	0-0	.000	0-0	.000	0-0	.000	0	0	0	0.0	0	0	0	0	0	0	0.0
11/24	CENTRAL ARK	*	12	1-3	.333	0-0	.000	0-0	.000	0	2	2	5.7	2	1	3	1	0	2	4.2
11/25	GEORGIA STATE	*	30	8-22	.364	8-22	.364	0-0	.000	0	3	3	2.1	1	1	1	1	0	24	15.0
11/26	STONY BROOK	*	40	2-9	.222	2-8	.250	1-2	.500	0	0	0	1.9	0	3	2	0	1	7	14.1
11/25	GEORGIA STATE	*	21	2-3	.667	0-0	.000	0-2	.000	4	7	11	6.4	2	1	0	2	0	4	4.1
12/1	MINNESOTA	*	21	0-3	.000	0-0	.000	2-2	1.000	0	3	3	6.2	2	0	1	1	0	2	5.4
12/4	TENNESSEE TECH		0	0-0	.000	0-0	.000	0-0	.000	0	0	0	0.0	0	0	0	0	0	0	0.0
12/7	NORTH ALABAMA		0	0-0	.000	0-0	.000	0-0	.000	0	0	0	0.0	0	0	0	0	0	0	0.0
12/14	USC UPSTATE		0	0-0	.000	0-0	.000	0-0	.000	0	0	0	0.0	0	0	0	0	0	0	0.0
12/18	LIPSCOMB		0	0-0	.000	0-0	.000	0-0	.000	0	0	0	0.0	0	0	0	0	0	0	0.0
12/22	UAB		0	0-0	.000	0-0	.000	0-0	.000	0	0	0	0.0	0	0	0	0	0	0	0.0

CAREER HIGHS

CATEGORY	STAT	DATE	OPPONENT
Points	21	11/14/24	Florida State
Field Goals Made	8	11/14/24	Florida State
Field Goal Attempts	17	12/5/24	North Alabama
3-Point Field Goals Made	0		
3-Point Field Goal Attempts	1	11/29/24	SFA
Free Throws Made	8	2/24/24	Furman
Free Throw Attempts	14	2/24/24	Furman
Rebounds	21	12/5/24	North Alabama
Assists	3	12/29/23	at Eastern Kentucky
Blocks	8	12/5/24	North Alabama
Steals	2	2/1/25	UNCG





2025-26 Samford Women's Basketball
Overall Team Statistics
All games

Page 1/1
as of Dec 27, 2025

Team Statistics

	SU	OPP
Scoring	893	998
Points per game	59.5	66.5
Scoring margin	-7.0	-
Field goals-att	315-847	375-910
Field goal pct	.372	.412
3 point fg-att	135-437	100-333
3-point FG pct	.309	.300
3-pt FG made per game	9.0	6.7
Free throws-att	128-188	148-222
Free throw pct	.681	.667
F-Throws made per game	8.5	9.9
Rebounds	510	611
Rebounds per game	34.0	40.7
Rebounding margin	-6.7	-
Assists	167	198
Assists per game	11.1	13.2
Turnovers	235	213
Turnovers per game	15.7	14.2
Turnover margin	-1.5	-
Assist/turnover ratio	0.7	0.9
Steals	94	98
Steals per game	6.3	6.5
Blocks	48	47
Blocks per game	3.2	3.1
Winning streak	0	-
Home win streak	1	-
Attendance	2855	19504
Home games-Avg/Game	4-714	9-2167
Neutral site-Avg/Game	-	2-1142

Score by Periods

Team	1st	2nd	3rd	4th	OT	TOT
Samford	209	188	255	229	12	893
Opponents	229	233	298	224	14	998