



# CRIMSON TIDE

BASKETBALL

14 NCAA TOURNAMENT APPEARANCES » 6 NCAA SWEET 16s » 1 NCAA FINAL FOUR » 6 ALL-AMERICANS



## GAME 21



23/23 ALABAMA **VS** MISSISSIPPI STATE

JAN. 25, 2026 / 2 P.M. CT / TUSCALOOSA, ALA.  
COLEMAN COLISEUM (13,474)

**TV: SEC NETWORK+**

Play-by-Play: Roger Hoover  
Analyst: Richard Hendrix  
Reporter: Nathan Brown

**RADIO: CRIMSON TIDE SPORTS NETWORK**

Play-by-Play: Gray Robertson

### CRIMSON TIDE

2025-26 Record..... 17-3  
2025-26 SEC Record..... 3-3  
Head Coach..... Kristy Curry  
Record at UA (Season)..... 238-165 (13th)  
Career Record (Season) ..... 546-314 (27th)

### BULLDOGS

2025-26 Record..... 15-5  
2025-26 SEC Record..... 2-4  
Head Coach..... Sam Purcell  
Record at MSU (Season)..... 82-40 (4th)  
Career Record (Season) ..... 82-40 (4th)

### SERIES NOTES

**All-Time:** Alabama and Mississippi State will meet for the 66th time in series history on Sunday. The Bulldogs hold a 56-9 advantage over the Crimson Tide.

**Last Outing:** Tennessee defeated Alabama, 88-80, on Feb. 20, 2025 in Knoxville, Tenn.

### PROBABLE STARTERS



**Jessica Timmons**  
22 pts, 3 reb, 3 ast



**Karly Weathers**  
11 pts, 7 rebs



**Diana Collins**  
9 pts, 5 rebs



**Ta'Mia Scott**  
3 rebs, 2 asts, 2 blks



**Naomi Jones**  
11 rebs, 6 blks

### FAST BREAKS

- Alabama returned to Coleman Coliseum last Sunday after a two-game road stint. UA's home game winning streak broke after falling to No. 20/20 Tennessee.
- After a week off, the Crimson Tide will look to get back into the win column against Mississippi State.
- Karly Weathers earned a career-high 23 points at Missouri before tying her career-high 11 rebounds against Auburn while also collecting a double-double in the loss (10 pts, 11 rebs).
- Alabama currently ranks No. 23 in both AP and USA Today Coaches poll at the end of Week 12.

## 2025-26 SCHEDULE

Opponent TV Time (CT)/Result

### NOVEMBER (7-0)

3	STETSON	SEC Network+	W, 82-73
6	MCNEESE	SEC Network+	W, 64-44
10	ALCORN STATE	SEC Network+	W, 92-39
17	ALABAMA A&M	SEC Network+	W, 66-43
19	SAMFORD	SEC Network+	W, 84-45
24	vs. Harvard%	FloSports	W, 80-60
26	at Minnesota	FloSports	W, 63-58

### DECEMBER (7-0)

1	KENNESAW STATE	SEC Network+	W, 79-65
4	CLEMSON#	ESPNU	W, 72-48
7	ULM	SEC Network+	W, 75-38
14	JACKSON STATE	SEC Network	W, 62-51
16	SAM HOUSTON	SEC Network+	W, 73-36
17	TULANE	SEC Network+	W, 81-52
21	TROY	SEC Network+	W, 77-59

### JANUARY

1	at No. 3/3 South Carolina*	SEC Network+	L, 57-83
4	ARKANSAS*	SEC Network+	W, 77-48
8	No. 6/7 KENTUCKY*	SEC Network+	W, 64-51
12	at Missouri*	SEC Network	W, 74-63
15	at Auburn*	SEC Network	L, 54-58
18	No. 20/20 TENNESSEE*	SEC Network	L, 59-70
25	MISSISSIPPI STATE*	SEC Network+	2 p.m.
29	at Georgia*	SEC Network	5:30 p.m.

### FEBRUARY

1	at LSU*	SEC Network	11 a.m.
5	OLE MISS*	SEC Network	8 p.m.
8	at Texas A&M*	SEC Network	5 p.m.
15	OKLAHOMA*	SEC Network	3 p.m.
19	SOUTH CAROLINA*	SEC Network	7:30 p.m.
22	at Florida*	SEC Network	11 a.m.
26	at Vanderbilt*	SEC Network+	6:30 p.m.

### MARCH

1	TEXAS*	SEC Network	11 a.m.
4-8	SEC Tournament	SEC Network	TBD

**Bold** denotes home game

\* SEC Game

% Baha Mar Pink Flamingo Championship (Nassau, Bahamas)

# ACC/SEC Challenge

This game notes packet includes **hyperlinks** that will guide readers to more information. **Hyperlinks** are identified in bold, crimson font.








@AlabamaWBB



@AlabamaWBB



Alabama Women's Basketball

	<b>1 ACE AUSTIN</b> G / 5-7 / FR / SPRING GARDEN, ALA.	<b>GS/GP</b>	<b>PPG</b>	<b>RPG</b>	<b>AST</b>	<b>STL</b>	<b>BLK</b>	<b>MPG</b>	<b>NOTES:</b> Averaging 6.6 ppg coming off the bench...Surpassed 100 career points on Jan. 1...Named SEC Co-Freshman of the Week (11/25)...Two-time Miss Alabama Basketball (2025,24)... Two-time Alabama MaxPreps player of the year (2025,24)... Three time AHSSA 1A Basketball State Champion.	<b>CAREER HIGHS</b> <b>Pts:</b> 21, Alcorn State (11/10/25) <b>Asts:</b> 5, Samford (11/19/25) <b>Rebs:</b> 5, Alcorn State (11/10/25)
	<b>4 ERIS LESTER</b> G / 5-11 / SO / JACKSONVILLE, FLA.	<b>GS/GP</b>	<b>PPG</b>	<b>RPG</b>	<b>AST</b>	<b>STL</b>	<b>BLK</b>	<b>MPG</b>	<b>NOTES:</b> Has seen limited minutes through five games played this year...Currently out with a lower leg injury... Appeared in 30 games, averaging 9.9 minutes per game to lead Alabama's freshman class in the 2024-25 season.	<b>CAREER HIGHS</b> <b>Pts:</b> 5, Alcorn (11/10/25) <b>Rebs:</b> 2, Arkansas (01/19/25) <b>Stls:</b> 1, Missouri (01/05/25)
	<b>5 REYCHEL DOUGLAS</b> G / 6-0 / R-SO / RALEIGH, N.C.	<b>GS/GP</b>	<b>PPG</b>	<b>RPG</b>	<b>AST</b>	<b>STL</b>	<b>BLK</b>	<b>MPG</b>	<b>NOTES:</b> Returned after medically reshirting the 2024-25 season... Has seen limited minutes through five games played this year...Appeared in 17 games during the 2023-24 season... Named a Who's Next All-American in 2023.	<b>CAREER HIGHS</b> <b>Pts:</b> 3, Coastal Carolina (12/06/23) <b>Rebs:</b> 5, South Carolina (02/22/24) <b>Asts:</b> 2, Jacksonville (12/20/23)
	<b>7 WAIATA JENNINGS</b> G / 5-9 / SR / ROTORUA, NEW ZEALAND	<b>GS/GP</b>	<b>PPG</b>	<b>RPG</b>	<b>AST</b>	<b>STL</b>	<b>BLK</b>	<b>MPG</b>	<b>NOTES:</b> Saw her first regular season minutes with the Tide on Dec. 1 after recovering from a lower leg injury...Brings in maturity and vocalty...Transfer from Baylor... Appeared in 30 games in 2024-25... Averaged 34.3 percent from deep, 39.3 percent from the field.	<b>CAREER HIGHS</b> <b>Pts:</b> 34, Connors State (01/03/24) <b>Rebs:</b> 16, Kilgore (11/25/23) <b>Blks:</b> 10, Temple (03/06/24)
	<b>11 TIANNA CHAMBERS</b> G / 6-1 / FR / AURORA, COLO.	<b>GS/GP</b>	<b>PPG</b>	<b>RPG</b>	<b>AST</b>	<b>STL</b>	<b>BLK</b>	<b>MPG</b>	<b>NOTES:</b> Has seen limited minutes through six games played this season...2023 All-Centennial League... Jordan Brand 3v3 Participant... Two-time She Got Game Most Valuable Player.	<b>CAREER HIGHS</b> <b>Asts:</b> 1, Alcorn State (11/10/25) <b>Rebs:</b> 5, ULM (12/07/25) <b>Stls:</b> 1, Alcorn State (11/10/25)
	<b>15 TA'MIA SCOTT</b> G / 6-0 / SR / CLARKSVILLE, TENN.	<b>GS/GP</b>	<b>PPG</b>	<b>RPG</b>	<b>AST</b>	<b>STL</b>	<b>BLK</b>	<b>MPG</b>	<b>NOTES:</b> Earned a career-high in scoring (15 pts) at UA on Jan. 4 vs. Arkansas...Started in each contest so far this season...Tied her season-high 12 points on Dec. 16... Transfer from Middle Tennessee... Surpassed 1,000 career points with MTSU.	<b>CAREER HIGHS</b> <b>Pts:</b> 30, Jacksonville State (02/06/25) <b>Rebs:</b> 14, Jacksonville State (02/06/25) <b>Blks:</b> 6, Grand Canyon (11/08/24)
	<b>17 LOURDES DA SILVA COSTA</b> F / 6-3 / FR / STOCKHOLM, SWEDEN	<b>GS/GP</b>	<b>PPG</b>	<b>RPG</b>	<b>AST</b>	<b>STL</b>	<b>BLK</b>	<b>MPG</b>	<b>NOTES:</b> Has played in 16/17 contest during the 2025-26 season...Division B U16 European Championships All-Star Team (2022-23)... Averaged 9.3 points and 11 rebounds per game in 21 minutes of play for the Sweden team vclub (2022-23)	<b>CAREER HIGHS</b> <b>Pts:</b> 6, ULM (12/07/25) <b>Asts:</b> 3, Alcorn State (11/10/25) <b>Stls:</b> 1, Alcorn State (11/10/25)
	<b>20 DIANA COLLINS</b> G / 5-9 / JR / LILBURN, GA.	<b>GS/GP</b>	<b>PPG</b>	<b>RPG</b>	<b>AST</b>	<b>STL</b>	<b>BLK</b>	<b>MPG</b>	<b>NOTES:</b> Alabama's starting PG...Recorded a new career-high 20 points and six assists on Dec.14...Second-most assists on the team (46)...Appeared in 31 games, with 5 starts, during the 2024-25 season.	<b>CAREER HIGHS</b> <b>Pts:</b> 20, Jackson State (12/14/25) <b>Rebs:</b> 6, Jackson State (12/14/25) <b>Asts:</b> 7, Tulane (12/17/25)
	<b>21 ESSENCE CODY</b> F / 6-4 / JR / VALDOSTA, GA.	<b>GS/GP</b>	<b>PPG</b>	<b>RPG</b>	<b>AST</b>	<b>STL</b>	<b>BLK</b>	<b>MPG</b>	<b>NOTES:</b> One of the team's leaders this season...Second-highest points per game with 14.6 through 12 games... Returned to action on Dec. 21 after dealing with a lower leg injury...Appeared in 33 contests, making 32 starts during the 2024-25 season.	<b>CAREER HIGHS</b> <b>Pts:</b> 23, McNeese (11/06/25) <b>Rebs:</b> 14, Florida State (03/22/24) <b>Blks:</b> 6, McNeese (11/06/25)
	<b>22 KARLY WEATHERS</b> G / 5-11 / SR / LORETTO, TENN.	<b>GS/GP</b>	<b>PPG</b>	<b>RPG</b>	<b>AST</b>	<b>STL</b>	<b>BLK</b>	<b>MPG</b>	<b>NOTES:</b> One of the team's leaders this season...Team-leading rebounder with 121 (6.4 rpg)...Considered the "glue" of the team for doing the little things that make a big impact on the court...In her last semester as a nursing student.	<b>CAREER HIGHS</b> <b>Pts:</b> 23, at Missouri (11/12/26) <b>Rebs:</b> 11, 2x last at Auburn (11/15/26) <b>Asts:</b> 10, Florida (03/06/25)
	<b>23 JESSICA TIMMONS</b> G / 5-8 / R-SR / CHARLOTTE, N.C.	<b>GS/GP</b>	<b>PPG</b>	<b>RPG</b>	<b>AST</b>	<b>STL</b>	<b>BLK</b>	<b>MPG</b>	<b>NOTES:</b> One of the team's leaders this season...Has scored in double figures in 14 out of 19 of Alabama's contests...Averaging a team-high 15.5 ppg...Named SEC Co-Player of the Week on Jan.13...Returns after medically reshirting the 2024-25 season.	<b>CAREER HIGHS</b> <b>Pts:</b> 26, at Auburn (01/21/24) <b>Rebs:</b> 9, at Little Rock (11/19/23) <b>Asts:</b> 7, Alcorn State (11/10/25)
	<b>24 LEAH BROOKS</b> G / 6-3 / SO / TONEY, ALA.	<b>GS/GP</b>	<b>PPG</b>	<b>RPG</b>	<b>AST</b>	<b>STL</b>	<b>BLK</b>	<b>MPG</b>	<b>NOTES:</b> Seen action in 10 games this season...Made 20 appearances during her freshman year, averaging 4.6 minutes per game off the bench...Four-time AHSSA 6A State Champion...Named ASWA 6A Player of the Year	<b>CAREER HIGHS</b> <b>Pts:</b> 4, Texas A&M (02/17/25) <b>Rebs:</b> 3, ULM (12/07/25) <b>Stls:</b> 1, at Missouri (01/05/25)
	<b>25 JOY EGBUNA</b> F / 6-3 / FR / ARLINGTON, TEXAS	<b>GS/GP</b>	<b>PPG</b>	<b>RPG</b>	<b>AST</b>	<b>STL</b>	<b>BLK</b>	<b>MPG</b>	<b>NOTES:</b> A four-star freshman from Texas...Holds the Faith Family Academy record for most blocks in a single season...participated in the USA Basketball games (2020-21)	<b>CAREER HIGHS</b> <b>Pts:</b> 4, Alcorn State (11/10/25) <b>Rebs:</b> 1, Samford (11/19/25) <b>Blks:</b> 1, Alcorn State (11/10/25)
	<b>31 NAOMI JONES</b> F / 6-4 / R-SO / JACKSON, ALA.	<b>GS/GP</b>	<b>PPG</b>	<b>RPG</b>	<b>AST</b>	<b>STL</b>	<b>BLK</b>	<b>MPG</b>	<b>NOTES:</b> Made her first career start on Dec. 7 vs. ULM...Seen action in each game so far, making seven starts...Earned her first career double-double vs. Tulane on Dec. 17...Leads the team in blocks with 23...Returns after medically reshirting the 2024-25 season	<b>CAREER HIGHS</b> <b>Pts:</b> 11, ULM (12/07/25) <b>Rebs:</b> 10, Tulane (12/17/25) <b>Blks:</b> 3, Mississippi Valley (12/31/23)
	<b>32 ALANCIA RAMSEY</b> F / 6-0 / JR / DELRAY BEACH, FLA.	<b>GS/GP</b>	<b>PPG</b>	<b>RPG</b>	<b>AST</b>	<b>STL</b>	<b>BLK</b>	<b>MPG</b>	<b>NOTES:</b> Returned to action on Jan. 1 after suffering a shoulder injury ...Adds depth and experience...Spent two season at Coastal Carolina before arriving to The Capstone...tabbed as an All-Sun Belt Third Team selection (2025)...started in 56 games while in South Carolina.	<b>CAREER HIGHS</b> <b>Pts:</b> 28, Georgia Southern (02/12/25) <b>Rebs:</b> 16, SC State (11/15/23) <b>Asts:</b> 5, Harvard (11/24/25)

2025-26 ALABAMA WOMEN’S BASKETBALL ROSTER

No.	Name	Pos.	Ht.	Cl.	Hometown (Previous School)
1	Ace Austin	G	5-7	Fr.	Spring Garden, Ala. (Spring Garden HS)
4	Eris Lester	G	5-11	So.	Jacksonville, Fla. (Montverde Academy)
5	Reychel Douglas	G	6-0	R-So.	Raleigh, N.C. (Millbrook Magnet HS)
7	Waiata Jennings	G	5-9	Sr.	Rotorua, New Zealand (Baylor)
11	Tiana Chambers	G	6-1	Fr.	Aurora, Colo. (Cherry Creek HS)
15	Ta'Mia Scott	G	6-0	Sr.	Clarkville, Tenn. (Middle Tennessee)
17	Lourdes Da Silva Costa	F	6-3	Fr.	Stockholm, Sweden (Montverde Academy)
20	Diana Collins	G	5-9	Jr.	Lilburn, Ga. (Ohio State)
21	Essence Cody	F	6-4	Jr.	Valdosta, Ga. (Valdosta HS)
22	Karly Weathers	G	5-11	Sr.	Loretto, Tenn. (Loretto HS)
23	Jessica Timmons	G	5-8	R-Sr.	Charlotte, N.C. (NC State)
24	Leah Brooks	G	6-3	So.	Toney, Ala. (Hazel Green HS)
25	Joy Egbuna	F	6-3	Fr.	Arlington, Texas (Faith Family Academy)
31	Naomi Jones	F	6-4	R-So.	Jackson, Ala. (Jackson HS)
32	Alancia Ramsey	F	6-0	Jr.	Delray Beach, Fla. (Coastal Carolina)

PRONUNCIATIONS

#5 <b>Reychel</b> Douglas.	Ray-Chul
#7 <b>Waiata</b> Jennings.	why-AH-tuh
#11 <b>Tianna</b> Chambers.	tee-AH-nuh
#17 Lourdes <b>Da Silva Costa</b> .	dah-SEEL-vah COE-stah
#25 Joy <b>Egbuna</b> .	eg-B00-nuh
#32 <b>Alancia</b> Ramsey.	ah-LAN-see-uh

Alabama	TEAM	Mississippi State
71.8	POINTS	79.3
44.6%	FG%	46.1%
35.2%	3FG%	33.2%
8.0 (P/G)	3FGM (P/G)	5.8 (P/G)
72.8%	FT%	72.7%
11.9 (P/G)	FTM (P/G)	14.5 (P/G)
39.7	REBOUNDS	44.4
14.2	ASSISTS	14.9
8.3	STEALS	8.0
5.3	BLOCKS	5.2

BY THE NUMBERS

**SENIORS (4)**  
Waiata Jennings (T)  
Ta'Mia Scott (T)  
Karly Weathers  
Jessica Timmons

**JUNIORS (3)**  
Diana Collins  
Essence Cody  
Alancia Ramsey (T)

**SOPHOMORES (4)**  
Eris Lester  
Reychel Douglas (R)  
Leah Brooks  
Naomi Jones (R)

**FRESHMEN (4)**  
Ace Austin  
Tianna Chambers  
Lourdes Da Silva Costa  
Joy Egbuna

\* (T) - Transfer; (R) - Redshirt

TIDE VS. BULLDOGS SERIES NOTES

HISTORY VS. MISSISSIPPI STATE

Alabama holds a 41-24 advantage over Mississippi State in the overall series that dates back to 1977.

The Crimson Tide defeated the Bulldogs in Starkville, Miss., 80-60, on Feb. 9, 2025. The win marked the fastest an UA team reached 20 wins.

In Tuscaloosa, Alabama has earned a 18-12 record over MSU. .

CURRY VS PURCELL

Alabama's Kristy Curry and Mississippi State's Sam Purcell will meet for the fourth time while coaching at their respective programs. Curry holds 2-1 over Purcell.

## HEAD COACH KRISTY CURRY

## PURDUE UNIVERSITY, HEAD COACH, 1999-2006

Year	Record	Pct.	Big Ten Record	Pct.	Postseason
1999-00	23-8	.742	11-5	.688	NCAA Second Round
2000-01	31-7	.816	14-2	.875	NCAA Runner Up
2001-02	24-6	.800	13-3	.813	NCAA Second Round
2002-03	29-6	.829	12-4	.750	NCAA Elite Eight
2003-04	29-4	.879	14-2	.875	NCAA Sweet 16
2004-05	17-13	.567	9-7	.563	NCAA Second Round
2005-06	26-7	.788	13-3	.813	NCAA Sweet 16
<b>Total (7)</b>	<b>179-51</b>	<b>.778</b>	<b>86-26</b>	<b>.768</b>	

## TEXAS TECH UNIVERSITY, HEAD COACH, 2006-13

Year	Record	Pct.	Big 12 Record	Pct.	Postseason
2006-07	15-16	.484	6-10	.375	
2007-08	17-16	.515	4-12	.250	WNIT Third Round
2008-09	16-15	.516	6-10	.375	
2009-10	18-15	.545	5-11	.313	WNIT Second Round
2010-11	22-11	.667	8-8	.500	NCAA First Round
2011-12	21-14	.600	6-12	.333	WNIT Third Round
2012-13	21-11	.656	11-7	.611	NCAA First Round
<b>Total (7)</b>	<b>130-98</b>	<b>.570</b>	<b>46-70</b>	<b>.397</b>	

## UNIVERSITY OF ALABAMA, HEAD COACH, 2013-PRESENT

Year	Record	Pct.	SEC Record	Pct.	Postseason
2013-14	14-16	.467	7-9	.438	
2014-15	13-19	.406	2-14	.125	
2015-16	15-16	.484	4-12	.250	WNIT First Round
2016-17	22-14	.611	5-11	.313	WNIT Quarterfinals
2017-18	20-14	.588	7-9	.438	WNIT Quarterfinals
2018-19	14-17	.452	5-11	.313	
2019-20	18-12	.600	8-8	.500	N/A due to COVID-19
2020-21	17-10	.630	8-8	.500	NCAA Second Round
2021-22	20-14	.588	6-10	.375	WNIT Quarterfinals
2022-23	20-11	.645	9-7	.563	NCAA First Round
2023-24	24-10	.705	10-6	.625	NCAA Second Round
2024-25	24-9	.727	10-6	.625	NCAA Second Round
2025-26	17-3	.850	3-3	.500	
<b>Total (13)</b>	<b>238-1645</b>	<b>.591</b>	<b>83-114</b>	<b>.423</b>	
<b>CAREER (27)</b>	<b>546-313</b>	<b>.635</b>	<b>215-209</b>	<b>.506</b>	

## COACHING HIGHLIGHTS

- **545+ CAREER WINS**
- **13 NCAA TOURNAMENT APPEARANCES**
- **ONE NCAA FINAL FOUR**
- **TWO NCAA ELITE EIGHTS**
- **FOUR NCAA SWEET 16S**
- **SEVEN WNIT APPEARANCES**
- **TWO BIG TEN REGULAR-SEASON TITLES**
- **15 20-WIN SEASONS**
- **ONLY ACTIVE HEAD COACH IN WOMEN'S BASKETBALL HISTORY TO HAVE 130+ WINS AT THREE DIFFERENT SCHOOLS.**





## IN THE RANKINGS

- After earning its first ranking in the AP Poll last Monday (Jan. 12), Alabama remains in the top-25 coming in at No. 23 during week 12 of the 2025-26 season.
- The Crimson Tide also sit at No. 23 in the USA Today Coaches Poll. UA earned its first ranking on Dec. 9 following five weeks of receiving votes in the poll.
- Alabama currently ranks 29th in the NET.

## MAKING NEWS

- Jessica Timmons was named a **SEC Co-Player of the Week** on Tuesday, Jan. 13
- Timmons aided in the Crimson Tide's 64-51 win over then-No. 6/7 Kentucky (Jan. 8) and its 74-63 road victory at Missouri (Jan. 12), as her performance versus the Wildcats and Tigers marked her 13th and 14th game in double figures.

## BREAKING OUT

- The Crimson Tide's senior guard, Ta'Mia Scott, had her best game of the season in the team's 77-44 win over Arkansas on Jan. 4.
- Scott finished with a game-high 16 points, shooting 6-for-10 (60 percent) from the field and 4-for-6 (67 percent) from deep while also grabbing five rebounds.
- The Clarksville, Tenn., native **credited her coaches and teammates** for their confidence in her to keep taking shots.

## JT COMING

- **Jessica Timmons** is one of four UA players to have started in all 20 games for the Tide this season, and paces the team with 316 points, averaging 15.8 points per game.
- The senior is shooting 62-for-72 (86 percent) from the free throw line, ranking third within the SEC for free throw percentage.
- Timmons collected her sixth 20-plus point game following a 22-point performance on Sunday. It also marked her 16th double-figure game this season.

## STEPPING UP BIG

- **Naomi Jones** received the starting post position on Dec. 7 making her first career start verses ULM. The sophomore scored a then career-high 11 points and a team-high seven rebounds during the start.
- Since then, Jones has made seven more starts and currently averages 8.5 points per game. Jones collected a new career-high 15 points in Alabama's 62-51 win over Jackson State on Dec. 14.
- Through eight starts, Jones averaged 8.5 points per game and 6.3 rebounds per game which included collecting her first career double-double on Dec. 17 (11 pts, 10 rebs).
- See below for Jones' starting (top) vs. bench (bottom) stats.

Games Played	Minutes/ game	Points/ game	FG Pct	3FG Pct	FT Pct	Rebounds/ game	Assists/ game	Turnovers/ game	Assist/Turnover ratio	Steals/ game	Blocks/ game
8	22.5	8.5	51.0	0.0	62.1	6.3	0.8	1.3	0.6	0.6	2.9
Games Played	Minutes/ game	Points/ game	FG Pct	3FG Pct	FT Pct	Rebounds/ game	Assists/ game	Turnovers/ game	Assist/Turnover ratio	Steals/ game	Blocks/ game
12	12.9	3.3	37.5	0.0	47.4	5.0	0.4	0.7	0.6	0.5	1.3

## ALL TYPES OF WEATHER

- Senior Karly Weathers has often been referred to as "the glue of the team" because of her willingness and grittiness to do whatever it takes on both sides of the ball for the betterness of the team.
- Weathers currently paces Alabama in rebounding, averaging 6.4 per game, and most assists and steals with 56 and 37, respectfully.
- In Alabama's 64-51 win over No. 6/7 Kentucky, Weathers collected a career-high seven steals to go along with eight rebounds as she provided pressure on both sides of the ball for the team.
- In the Crimson Tide's next game at Missouri, the senior earned a career-high 23 points en route to the team's third-straight SEC win (74-63).

## UNDER 55

- Alabama has held 11 opponents under 55 points or less so far during the 2025-26 season, including holding four of its first five under 50 points.
- The Crimson Tide held Sam Houston to just 36 points in its 37-point victory over the Bearcats on Dec. 16, 2025

## QUICK FACTS

### UNIVERSITY INFORMATION

Location	Tuscaloosa, Ala.
Enrollment	42,360
Founded	April 12, 1831
Nickname	Crimson Tide
Colors	Crimson and White
Conference	Southeastern
President	Dr. Peter Mohler
Director of Athletics	Greg Byrne
Senior Woman Administrator	Dr. Karen Lee
Faculty Representative	Dr. James King
Facility	Coleman Coliseum
Capacity	13,474

### COACHING STAFF

<b>Head Coach</b>	<b>Kristy Curry</b>
Alma Mater	Northeast Louisiana, 1988
	Stephen F. Austin, 1994
Record at Alabama	237-164 (.577)
SEC Record	83-113 (.421)
Overall Record	545-313 (.630)
2025-26 Season at Alabama	13th
2025-26 Overall Season	27th
<b>Associate Coach/Recruiting</b>	<b>Brooks D. Williams</b>
Alma Mater	Mississippi State, 2000
Season at Alabama	1st (Second Tenure)
<b>Assistant Coach</b>	<b>Kelly Curry</b>
Alma Mater	Texas A&M, 1990
	Stephen F. Austin, 1993
Season at Alabama	13th
<b>Assistant Coach</b>	<b>Tennille Adams</b>
Alma Mater	Arkansas, 1999
Season at Alabama	3rd
<b>Asst. Coach/Dir of Player Dev./Rec. Operations</b>	
	<b>Chelsea Dungee-Artberry</b>
Alma Mater	Arkansas, 2019
Season at Alabama	1st
<b>Asst. Coach/Dir of Video/Creative Content</b>	
	<b>Sydney-Anne Cottrell</b>
Alma Mater	Texas A&M-Corpus Christi, 2020
	Texas A&M, 2022
Season at Alabama	3rd
<b>Director of Operations/NIL Partnerships/Branding</b>	<b>Brian Johnson</b>
Alma Mater	Tennessee, 2016
	Alabama, 2018
Season at Alabama	1st (Second Tenure)

### TEAM INFORMATION

2024-25 Overall Record	24-9
2024-25 SEC Record	10-6
SEC Finish	.6
Postseason	NCAA Tournament Second Round
Starters R/L	2/3
Letterwinners R/L	3/5
Newcomers	7
All-Time Record	854-650 (.568)
SEC Record	205-347 (.373)
Home Record	455-213 (.677)
First Season	1974
NCAA Appearances	13 (1984, 1988, 1992-99, 2021, 2023-25)
WNIT Appearances	8 (2000-02, 2011, 2016-18, 2022)

### ATHLETICS COMMUNICATIONS

WBB Contact	Anna Nobles
E-mail	anobles@ia.ua.edu
Cell Phone	(601) 441-4289
Mailing Address	1201 Coliseum Dr. Room 170
	Tuscaloosa, AL 35487

## ALABAMA'S RECORD WHEN...

At home.....	14-1
On the road.....	1-2
At a neutral site.....	2-0
Against a top 25 opponent.....	0-1
Against a top 15 opponent.....	0-0
Against a top 10 opponent.....	1-0
Against a top 5 opponent.....	0-1
In tournaments.....	2-0
On television.....	3-2
In white uniforms.....	15-1
In crimson uniforms.....	2-2
In pink uniforms.....	0-0
On Sunday.....	4-1
On Monday.....	6-0
On Tuesday.....	1-0
On Wednesday.....	3-0
On Thursday.....	3-2
On Friday.....	0-0
On Saturday.....	0-0
Day Games (before 5 p.m. CT).....	6-2
Night Games (after 5 p.m. CT).....	9-1
Overtime Games.....	0-0
Leading at the half.....	14-0
Trailing at the half.....	3-3
Tied at the half.....	0-0
Outrebounding opponent.....	15-1
Opponent outrebounds Alabama.....	1-2
Equal rebounds.....	1-0
FG% equal/over .500.....	4-0
FG% equal/over .400.....	10-1
FG% below .400.....	3-2
Opponent FG% equal/over .400.....	2-3
Opponent FG% below .400.....	15-0
Alabama has more turnovers.....	5-2
Opponent has more turnovers.....	12-1
Teams have equal turnovers.....	0-0
Scoring below 50 points.....	0-0
Scoring 50-59 points.....	0-3
Scoring 60-69 points.....	5-0
Scoring 70-79 points.....	7-0
Scoring 80-89 points.....	4-0
Scoring 90-99 points.....	1-0
Scoring 100+ points.....	0-0
Two or less players score in double figures.....	4-2
At least three players score in double figures.....	7-1
At least four players score in double figures.....	4-0
At least five players score in double figures.....	1-0
At least six players score in double figures.....	1-0
When leading after 3rd period.....	16-0
When trailing after 3rd period.....	0-3
When tied after 3rd period.....	1-0
When leading w/ 5 minutes left.....	16-0
When trailing w/ 5 minutes left.....	0-3
When tied w/ 5 minutes left.....	1-0

## THE DIANA COLLINS IMPACT

- Alabama's junior guard, **Diana Collins**, is currently averaging 14 points per game across the last five contests.
- Collins collected her fifth-straight game scoring in double-figures following a 16 point performance in the Crimson Tide's 64-51 win over No. 6/7 Kentucky Thursday.
- Over the last six games, Collins has dished out 21 assists, including a career-high seven on Dec. 17
- The Lilburn, Ga., native secured a career-high 20 points in Alabama's 62-51 win over Jackson State on Dec. 14.

## IT JUST MEANS MORE

- Alabama propelled past Clemson, 72-48, in the ACC/SEC Challenge on Dec. 4 to claim the team's first win in the conference dual since the inaugural year on 2023.
- The SEC dominated this year's challenge, securing the win with a 13-3 record over the ACC.

## ALL BUSINESS IN THE BAHAMAS

- Alabama claimed the 2025 Pink Flamingo Championship Junkanoo Division title on Wednesday, Nov. 26, after securing wins over Harvard (80-60) and Minnesota (63-58).
- Jessica Timmons led the Crimson Tide in it's 20-point victory over Harvard in game one of the tournament. Timmons posted a season-high 25 points, shooting 10-of-17 (59 percent) from the field.
- In the championship game, Alabama found itself tied at 55-55 with under four minutes to play before UA's defense would rally to hold Minnesota to just three points to finalize the title.
- Timmons and Essence Cody were both named to the All-Tournament Team, while Cody was also honored as the MVP of the Junkanoo Division.

## PLAYING HER CARDS RIGHT

- Alabama's freshman, Ace Austin, hit a career-high 21 points, going 4-of-8 from deep, to become the first UA player this year to score more than 20 points off the bench in the team's 84-45 win over Samford on Nov. 19.
- The Spring Garden, Ala. native, also dished out a team-high five assists as the Tide collected 21 helpers on 31 made field goals.

## SEC ACCOLADES FOR AUSTIN

- Following her back-to-back double digit games against Samford (Nov. 19; 21 points) and Harvard (Nov. 24; 17 points), Ace Austin was named the SEC Co-Freshman of the Week, marking her first collegiate accolade of her career.
- Austin became the first UA freshman to have consecutive double figure games since teammate Essence Cody during the 2023-24 season.

## PRESEASON ACCOLADES FOR CODY

- Alabama's Essence Cody collected a pair of preseason accolades leading into her junior season.
- The Valdosta, Ga., native was named to the Second Team All-SEC list on Oct. 22, voted on by the league's head coaches, which marked her first preseason honor of her career.
- Cody was also named to the 2026 Katrina McClain Award Preseason Top 20 Watch List, the Naismith Basketball Hall of Fame and Women's Basketball Coaches Association (WBCA) announced on Oct. 30.

## 20+ WIN SEASONS

- The 2024-25 campaign marked the 17th 20-plus win season in program history.
- It also represented the fourth consecutive 20-plus win season under head coach Kristy Curry.
- It is the sixth 20-plus win season under Curry, joining a pair of 20-win seasons in 2016-17 and 2017-18.
- It is also the program's longest streak since an eight-year run from 1991 to 1999.
- Alabama defeated Mississippi State, 80-60, on Feb. 9, 2025 to become the fastest team to reach 20 wins in a season.

## NON-CONFERENCE HISTORY

- Alabama improved to 14-0 after defeating Troy, 77-59, on Dec. 21 to close out its non-conference play. The win marked the program's all-time best start to a season.
- The Crimson Tide's victory tied the program's longest winning streak at 14. The last time the UA won 14 contests in a row was from Dec. 6, 1996, to Jan. 22, 1997.

2024-25 A MILESTONE-MAKING YEAR

- In her 12th season with Alabama, Kristy Curry coached the Crimson Tide to a 24-9 overall record, marking the fourth consecutive 20-win season and Curry's sixth at The Capstone.
- UA made history during the preseason after receiving an Associated Press preseason ranking (No.24) for the first time since the 1998-99 season.
- Alabama remained in the AP Poll for all but two weeks, receiving it's highest ranking of 18, twice while remaining in the USA Today Coaches Poll every week (highest ranking No. 17).
- The Tide started the season 13-1 in non-conference play, the best start to a season in program history.
- Curry and staff coached the 2024-25 squad to becoming the fastest team to earn 20 wins in a season following a 80-60 victory on Feb. 9, 2025 at Mississippi State.
- In just the third game of the season, Curry collected her 200th win at The Capstone on Nov. 10, 2024 after the Tide defeated Troy, 94-71, inside Coleman Coliseum.
- UA defeated two top-15 teams during the season, including downing then-No. 7 LSU inside Coleman Coliseum in overtime, 88-85.
- Alabama finished the year by making more history as the program saw three student-athletes hear their name called during the 2025 Women's National Basketball Association Draft.
- The Tide saw a player drafted in each of the three rounds, including Sarah Ashlee Barker who was the ninth overall pick selected by the Los Angeles Sparks. Aaliyah Nye was drafted as the 13th overall pick, second round, by the Las Vegas Aces while Zaay Green was selected by the Washington Mystics in the third round with the 32nd pick.

TIDE RETURNERS

- Alabama returns eight players: guards Jessica Timmons, Karly Weathers, Diana Collins, Reychel Douglas, Eris Lester and Leah Brooks as well as forwards Essence Cody and Naomi Jones.
- Weathers and Cody are the only two starters returning for the season. Weathers averaged 7.2 points and 3.5 rebounds per game last season. Cody averaged 11.1 points and 6.3 rebounds per game in 2024-25.
- Jessica Timmons, Reychel Douglas and Naomi Jones return to the court from injuries after redshirting for the 2024-25 season.
- Eris Lester and Leah Brooks return from the 2024-25 freshman class. Lester led the group averaging 4.1 points a game with 63 rebounds last season. Brooks appeared in 20 games for the Crimson Tide.

NEW KIDS ON THE BLOCK

- Head coach Kristy Curry picked up three high-quality transfers in Waiata Jennings (Baylor), Ta'Mia Scott (Middle Tennessee) and Alancia Ramsey (Coastal Carolina).
- Waiata Jennings came to Alabama after spending a year at Baylor, where she appeared in 30 games and averaged 34.3 percent from deep and 39.3 percent from the field. Jennings spent the first two years of her collegiate career at Collins College (2022-2024) and started in all 64 games. With the Cougars, she secured a program-leading 2,024 points and averaged 31.6 points per game, shooting 46.3 percent from the floor
- Ta'Mia Scott, a senior from Middle Tennessee, started every game for two straight seasons (2023-25) and collected a total of 471 rebounds, 87 blocks and 99 steals across her three seasons with the Blue Raiders. Scott surpassed 1000 career points on March 12, 2025, and became the 37th player in program history to do so.Scott was named to the CUSA Commissioner's Honor Roll (2024), All-Conference USA First Team Honoree (2024), All-Conference USA Second Team (2023) and was highlighted as the CUSA Player of the Week three times during the 2024-25 season.
- Alancia Ramsey comes from Coastal Carolina, where she recorded the most points scored for the Chanticleers with 395, averaging 12.3 points per game, along with the most rebounds with 205, averaging 6.5 per game in 2024-25. During her high school years, Ramsey was named the Sun Sentinel Palm Beach Player of the Year while playing at St. Thomas Aquinas High School and led the team to win the BCAA Big Eight district, regional and state championships (2020-21).

FRESH(MEN) NEW LOOK

- Alabama added four freshmen to its 2025-26 roster including, Tianna Chambers, Lourdes Da Silva Costa, Joy Egbuna and Ace Austin.
- As a junior at Cherry Creek High School, Tianna Chambers averaged 16 points, 3.4 rebounds, and 2.0 steals, earning her recognition as an ESPNW four-star recruit and Prep Girls Hoops No. 5-ranked player in Colorado. Chambers is also fluent in American Sign Language.
- Hailing from Stockholm, Sweden, Lourdes Da Silva Costa joins the Crimson Tide as an ESPNW four-star recruit. She was named Student-Athlete of the Year at Montverde Academy (2023-24) and was a member of the Division B U16 European Championships All-Star Team (2022-23).

2025-26 HOME & AWAY BREAKDOWN

CATEGORY	HOME	AWAY
Points per game	73.8	61.7
Opponent PPG	50.8	68.0
Field goal percentage	45.2	40.9
Opponent FG%	33.6	43.6
3-point percentage	35.3	30.3
Opponent 3-point%	28.8	39.1
Free throw percentage	71.4	77.8
Opponent FT%	65.0	81.8
Rebounds per game	41.7	31.0
Opponent RPG	31.8	38.7
Assists per game	14.9	10.0
Opponent APG	10.0	10.7
Steals per game	8.9	6.7
Opponent SPG	6.8	6.7
Turnovers per game	14.3	12.3
Opponent TO PG	15.8	13.3

POINTS BY QUARTER

HOME	1ST	2ND	3RD	4TH	OT
Alabama	295	254	299	259	
Opponents	204	193	182	179	

AWAY	1ST	2ND	3RD	4TH	OT
Alabama	74	74	82	98	
Opponents	69	77	100	66	

TIDE IN THE NCAA/SEC

CATEGORY	NCAA	SEC
Scoring Offense	--	--
Scoring Defense	9th	2nd
Scoring Margin	33rd	11th
Free Throw %	--	5th
Field Goal %	53rd	10th
FG% Defense	15th	6th
3-PT FG%	39th	6th
3-PT FG% Defense	--	--
Rebound Offense	--	10th
Rebound Defense	44th	4th
Rebound Margin	40th	8th
Blocks	17th	4th
Assists	--	--
Steals	--	--
Turnover Margin	--	--

\*As of Jan. 22

- Joy Egbuna comes to Alabama as an ESPNW four-star recruit as well as ESPNW's No. 97-ranked recruit. She was named to the Texas Association of Basketball Coaches All-Region Team (2023-24) and holds her high school's record for most blocks in a single season (44 blocks in 2023-24).
- Ace Austin rounded out Alabama's freshmen recruiting class as an ESPNW four-star recruit and No. 55-ranked player in the class of 2025 after leading her team to three Alabama High School Athletic Association (AHSAA) 1A Basketball State Championship wins. She earned the titles of Alabama Miss Basketball (2024), Alabama MaxPreps Player of the Year (2024), Gatorade Alabama Girls Basketball Player of the Year (2024) and AL.com Female Athlete of the Year (2024).

SWEDEN x TIDE

- Freshman Lourdes Da Silva Costa spent the summer training and playing with Sweden's Women's U20 team.
- The team competed in the FIBA U20 Women's EuroBasket from Aug. 2-10 in Matosinhos, Portugal, and advanced to the semifinals for the first time in team history.
- In just her second game, Da Silva Costa dominated the glass with 36 points, shooting 65 percent (13-20) and grabbed 16 rebounds.
- The UA freshman, finished fourth in rebounding (10.1 rpg) and eighth in the league in scoring (15.6 ppg), en route to being named an EuroBasket All-Star.
- Dive into Da Silva Costa's stat chart!**
- In back-to-back summers, Alabama has had a student-athlete compete for Sweden's U20 team.
- Diana Collins played with the team during the summers of 2023, while at Ohio State, and 2024 after transferring to the Capstone.
- Take a look back at DC's 2024 stats!**

STAYED TRUE

- Alabama has four returning juniors and seniors who have been with the Crimson Tide since their freshman seasons, including Essence Cody, Naomi Jones, Reychel Douglas and Karly Weathers.
- Essence Cody has started in 66-of-67 games for the Tide as the Valdosta, Ga., native enters her junior season.
- Redshirt sophomores Naomi Jones and Reychel Douglas return in 2025-26 after both recovering from injuries.
- Entering her senior year, Karly Weathers has been a constant on Kristy Curry's roster ever since she was the only freshman during the 2022-23 season.

TIDE PROS

- All five of Alabama's seniors from the 2024-25 season have signed professional contracts.
- Sarah Ashlee Barker (Los Angeles Sparks, No. 9 overall), Aaliyah Nye (Las Vegas Aces, No. 13 overall) and Zaay Green (Washington Mystics, No. 32 overall) became the program's first trio to be drafted on the same night during the 2025 WNBA Draft.
- Barker and Nye secured a spot on the Sparks' and Aces' rosters, respectively, while Green turned her focus to playing overseas.
- Green played her first season overseas with Kibirkštis Vilnius in Lithuania, while JeAnna Cunningham (ZKK Budućnost Bemax; Montenegro) and Christabel Ezumah (AD Cortegada; Spain) also signed contracts in Europe for the 2025-26 season.
- Green (AEL Women's Basketball) and Cunningham (WSBL Cathy Life Insurance Tigers of Taiwan) recently announced their signings with in the AEL and WSBL leagues.

ROOKIE SEASON RECAP

- Sarah Ashlee Barker (Los Angeles Sparks, 9th overall) and Aaliyah Nye (Las Vegas Aces, 13th overall) both made an impact on their respective teams during their rookie seasons in the WNBA.
- Barker made her **first of seven WNBA starts** against the Phoenix Mercury (May 21, 2025). Overall, she played in 34 of the Sparks' 44 games and averaged 3.1 points and 1.9 rebounds.
- Nearly two months into her rookie season, Nye earned her **100th career WNBA point** against the Washington Mystics on July 10.
- To cap off her rookie campaign, Nye became a **WNBA champion** with the Aces after the team swept the Mercury, 4-0, in the league finals.
- Check out the rookie stat charts for **Sarah Ashlee Barker** and **Aaliyah Nye**.

2025-26 SPECIALTY STATS

	Paint	T/O PTS	2ndCh	FastB	Bench
Alabama	34	20	13	3	14
Stetson	26	7	6	15	9
Alabama	28	6	11	2	10
McNeese	34	16	5	11	18
Alabama	44	19	16	14	37
Alcorn State	14	2	1	4	20
Alabama	40	20	5	14	23
Alabama A&M	12	7	6	0	16
Alabama	34	24	15	16	37
Samford	12	13	3	7	19
Alabama	44	26	12	15	34
Harvard	28	12	11	2	13
Alabama	20	12	2	3	2
Minnesota	32	8	7	8	3
Alabama	36	11	12	8	19
Kennesaw State	40	18	13	4	10
Alabama	34	18	7	12	6
Clemson	18	0	9	10	23
Alabama	48	30	11	12	25
ULM	28	9	5	3	14
Alabama	38	20	13	4	12
Jackson State	24	6	7	1	6
Alabama	26	14	24	6	26
Sam Houston	24	8	2	2	4
Alabama	22	25	19	7	18
Tulane	18	13	16	7	19
Alabama	38	12	14	3	16
Troy	34	8	21	10	26
Alabama	18	11	3	4	8
South Carolina	40	20	8	25	11
Alabama	30	12	12	8	19
Arkansas	20	8	7	12	20
Alabama	26	21	20	8	11
Kentucky	12	14	11	6	5
Alabama	42	12	9	11	10
Missouri	26	5	3	17	10
Alabama	26	20	6	4	11
Auburn	22	20	13	8	10
Alabama	20	9	12	8	10
Tennessee	28	20	9	2	16
Alabama					
Mississippi State					
Alabama					
Georgia					
Alabama					
LSU					
Alabama					
Ole Miss					
Alabama					
Texas A&M					
Alabama					
Oklahoma					
Alabama					
South Carolina					
Alabama					
Florida					
Alabama					
Vanderbilt					
Alabama					
Texas					
Alabama Totals	648	342	234	162	348
Average/Game	33.1	17.5	11.7	8.1	17.8
Opponent Totals	496	214	163	154	272
Average/Game	24.6	10.2	8.1	8.0	13.5



## SECOND TENURE WITH THE TIDE

- Head coach Kristy Curry returned two staffers in the offseason: Brian Johnson, who serves as the director of operations and NIL partnerships, and Brooks Donald Williams, who serves as an assistant coach and recruiting coordinator.
- Johnson brings over a decade of women's basketball experience, including seven years as a full-time staff member with the Crimson Tide. He served as the director of operations for the team from 2018 to 2023 and spent two years as Alabama's director of player development, recruiting and video operations from 2016-18.
- Donald Williams spent three seasons with the Crimson Tide as an assistant coach from 2016 to 2019 before most recently serving as an associate head coach at Southern Miss. She has also served as the head coach for two Division I schools: ULM (2019-23) and McNeese State (2007-16).

## DUNGEE-ARTBERRY JOINS STAFF

- Chelsea Dungee-Artberry joined the Alabama staff as the director of player development and recruiting operations on May 16, 2025.
- Dungee-Artberry started off at Arkansas where she received All-American honors and once held the Razorbacks' single-season scoring record with 759 points. She earned All-SEC First Team Honors and AP All America recognition in 2021.
- After leaving Arkansas in 2021, she was drafted No. 5 overall by the Dallas Wings and played with them until her departure from the WNBA in 2022.
- She then returned to the collegiate setting, this time as coach, most recently as an assistant coach at Tulsa where she helped guide the Golden Hurricanes to postseason appearances in both the American Athletic Conference and Women's National Invitational Tournament (WNIT).

## ARMY ROTC x ALABAMA WBB

- During the preseason, the team participated in The University of Alabama's Army ROTC physical training on Sept. 19.
- After meeting outside of Foster Auditorium, the team along with members of ROTC did a weighted **ruck march** down to Butler field where they would be put through an Army Fitness Test.
- In return, the **ROTC attended the team's practice** on Oct. 22 where UA's strength and conditioning coach Kevin Markle ran warmups before assistant coach Chelsea Dungee-Artberry ran them through ballhandling and shooting drills.
- The ROTC made a promise to the team that they will put 1,000 miles on a basketball by the end of the season as they plan to carry it with them through every physical training over the next several months.

## SIGNING WITH TIANNA

- Alabama freshman Tianna Chambers is fluent in American Sign Language after taking ASL classes her sophomore year of high school at Cherry Creek.
- During the Crimson Tide's home games, fans can see Chambers signing the words "timeout" and "halftime".

## CURRY JOINS HEARTS ON THE COURT

- Head coach Kristy Curry is one of 19 women's basketball coaches to join the American Heart Association's "Go Red for Women Hearts on the Court" collective that focuses on spreading the word about cardiovascular health.
- Curry, along with six other Southeastern Conference coaches, is a part of the collective's inaugural group. Kim Mulkey (LSU, Collective Chair), Katie Abrahamson-Henderson (Georgia), Jennie Baranczyk (Oklahoma), Kenny Brooks (Kentucky), Kim Caldwell (Tennessee) and Kelly Rae Finley (Florida) round out the other SEC coaches.
- Throughout the season, the Hearts on the Court collective will launch several public service announcements through social media that will highlight ways people can be on the offense of their heart health.

## KELLY CURRY RECOGNIZED IN A STEP UP HOF CLASS

- Assistant coach Kelly Curry was named to the **A STEP UP Assistant Coaches Hall of Fame class of 2025** after finishing his 12th season with the Crimson Tide and 27th season overall as a coach on May 21, 2025.
- Curry started his coaching career at Louisiana Tech before spending seven years at both Purdue (1999-2006) and Texas Tech (2006-2013) prior to coming to Alabama in 2013.
- During his time at Alabama, he has helped the team to three consecutive NCAA appearances and four showings across five years as well as six 20-plus win seasons, which included a 24-9 record during the 2024-25 campaign. Curry has also assisted in developing some of the programs most successful players including Aaliyah Nye who holds the program record for most three pointers in a single season, Brittany Davis and Jasmine Walker who were both drafted into the WNBA, Jordan Lewis, who was named Newcomer of the Year by the Associated Press, and Sarah Ashlee Barker who stands at the program's most recognizable player.

## AS SEEN ON TV

- The Alabama women's basketball team finalized its television schedule for the 2025-26 season, as 13 games will be broadcast on the ESPN family of networks.
- The 13 television appearances mark the most airings for the Crimson Tide in the last three seasons.
- UA made its 2025-26 network debut on ESPNU during the ACC/SEC Challenge on Dec. 4, as the Tide downed Clemson, 72-48, inside Coleman Coliseum.
- The Tide will have a total of 11 conference games broadcast, all of which will be streamed on SEC Network and six additional home games following the ACC/SEC Challenge.

## CALLING COLEMAN COLISEUM HOME + NEW THINGS COMING

- Alabama will play in historic Coleman Coliseum for the 10th straight season in 2025-26.
- UA split time between Foster Auditorium and Coleman Coliseum through 1975-81, playing 35 games at Foster during that time frame.
- The Tide permanently moved to Coleman Coliseum from 1981-2011. During the 2010-11 season, the women's basketball program played its final three games at Foster after it underwent a renovation.
- Then, the program played at Foster for the next five seasons (2011-16) except for four games, which included two season-opening doubleheaders with men's basketball and a pair of 5th Grade Fastbreak games.
- **COMING SOON:** Alabama Athletics formally proposed a Coleman Coliseum Basketball Training & Player Development Facility Expansion and Renovation during the summer of 2024.
- The proposed project consists of a 48,000 square-foot expansion on the southeast corner of Coleman Coliseum while renovating approximately 19,000 square feet of existing team space.

## LAST TIME IT HAPPENED ...

## ALABAMA INDIVIDUAL

**Scored 20+ points***Karly Weathers (23) at Missouri, Jan. 12, 2026***Scored 30+ points***Aaliyah Nye (32) at Ole Miss, Jan. 12, 2025***Scored 35+ points***Sarah Ashlee Barker (36) vs. Vanderbilt, Jan. 26, 2025***Scored 40+ points***Sarah Ashlee Barker (45) vs. Maryland, March 24, 2025***Consecutive 20-point games***Sarah Ashlee Barker (2) vs. LSU, Feb. 27, 2025 (21), at Oklahoma, March 2, 2025 (20)***Two players with 20+ point games***Zaay Green (22), Aaliyah Nye (23) vs Green Bay, March 22, 2025***Three players with 20+ point games***Shafontaye Myers (33), Ashley Williams (22), Daisha Simmons (37) vs. Troy, Dec. 20, 2013***Made 10+ field goals***Zaay Green (10) at Oklahoma, March 2, 2025***Made 15+ field goals***Sarah Ashlee Barker (17) vs. Maryland, March 24, 2025***Attempted 20+ field goals***Sarah Ashlee Barker (25) vs. Maryland March 24, 2025***Attempted 30+ field goals***Julie Ellis (31) vs. Talledega, Jan. 14, 1973***Made six 3-point field goals***Aaliyah Nye (6) vs. Auburn, Feb. 23, 2025***Made seven 3-point field goals***Aaliyah Nye (7) at Ole Miss, Jan. 12, 2025***Made eight or more 3-point field goals***Aaliyah Nye (9) at Florida, Feb. 6, 2025***Attempted 10+ 3-point field goals***Zaay Green (11) at Oklahoma, March 2, 2025***Attempted 15+ 3-point field goals***Brittany Davis (15) vs. Texas A&M, Feb. 20, 2022***Attempted 20+ 3-point field goals***Shafontaye Myers (21) vs. North Texas, Nov. 19, 2012***Made 10 free throws***Jessica Timmons (10) vs. Kennesaw State, Dec. 1, 2025***Made 15 free throws***Shondra Johnson (16) vs. Providence, Dec. 2, 2001***Attempted 15 free throws***Cierra Johnson (16) vs. LSU, Jan. 20, 2019***Had 15 rebounds***Brittany Davis (17) vs. Auburn, Feb. 12, 2023***Had 20 rebounds***Tierney Jenkins (27) at Belmont, Nov. 21, 2009***Two players with double-digit rebounds***Christabel Ezumah (10), Karly Weathers (10) vs. Green Bay, March 22, 2025***Had 10 assists***Karly Weathers (10) vs. Florida, March 6 2025***Had 15 assists***Niesa Johnson (15) vs. Ole Miss, March 5, 1994***Had six blocked shots***Essence Cody (23), vs. McNeese, Nov. 6, 2025***Had seven blocked shots***Ashley Knight (7) vs. Alabama A&M, Nov. 10, 2017***Had eight or more blocked shots***Jada Rice (8) vs. Sam Houston, Dec. 13, 2021***Had five steals***Essence Cody (5) vs. Maryland, March 22, 2025***Had six steals***Brittany Davis (6) vs. Mercer, Nov. 30, 2022***Had seven steals***Karly Weathers (7) vs. No. 6 Kentucky, Jan. 8, 2026***Had eight steals***Brittany Davis (8) vs. Troy, March 17, 2022***Double-double***Karly Weathers (10 pts, 11 rebs) at Auburn, Jan. 15, 2026***Consecutive double-doubles***Karly Weathers (10 rebounds, 10 assists) vs. Florida, March 6, 2025 and (10 points, 10 rebounds) vs. Green Bay, March 22, 2025***Two players with double-doubles***Essence Cody (13 pts, 11 rebs), Zaay Green (22 pts, 10 rebs) vs. Georgia State, Dec. 2, 2024***Three straight double-doubles***Jasmine Walker vs. LSU (13 pts, 10 rebs), Jan. 7; at Vanderbilt (25 pts, 16 rebs), Jan. 10; at Mississippi State (10 points, 10 rebounds), Jan. 14***Five or more straight double-doubles***Tierney Jenkins (8), Nov. 12 - Dec. 2, 2010***Triple-double***Daisha Simmons (37 pts, 11 ast, 11 rebs) vs. Troy, Dec. 20, 2013***20 points & 20 rebounds***Laura Head (25 pts & 21 rebs), vs. Florida State, Jan. 30, 1989*

## LAST TIME IT HAPPENED ...

**ALABAMA TEAM****Scored 85 points**

92 vs. Alcorn State, Nov. 10, 2025

**Scored 90 points**

92 vs. Alcorn State, Nov. 10, 2025

**Scored 95 points**

98 vs. Georgia State, Dec. 2, 2024

**Scored 100 points**

108 vs. Maryland (2OT), March 24, 2025

**Had 50 rebounds**

55 vs. Norfolk State, Dec. 18, 2022

**Had 60 rebounds**

65 vs. Georgia State, Dec. 2, 2024

**Made 35 field goals**

35 at Arkansas, Jan. 19, 2025

**Made 40 field goals**

40 vs. Maryland (2OT), March 24, 2025

**Attempted 65 field goals**

69 vs. LSU, Feb. 27, 2025

**Attempted 70 field goals**

75 at Oklahoma, March 2, 2025

**Attempted 80 field goals**

86 vs. New Orleans, Nov. 4, 2024

**Attempted 90 field goals**

97 vs. North Texas, Nov. 19, 2012

**Made 10 3-point field goals**

13 vs. Arkansas, Jan. 4, 2026

**Attempted 30 3-point field goals**

31 at Oklahoma, March 2, 2025

**Made 25 free throws**

25 vs. Jacksonville, Dec. 20, 2023

**Made 30 free throws**

31 vs. Alabama State, Nov. 6, 2023

**Made 35 free throws**

36 vs. Ole Miss, Jan. 5, 2017

**Attempted 35 free throws**

35 vs. Troy, Nov. 10, 2024

**Attempted 50 free throws**

50 vs. Ole Miss, Jan. 5, 2018

**Had 20 assists**

21 vs. Samford, Nov. 19, 2025

**Had 25 assists**

25 at Auburn, Feb. 14, 2021

**Had 30 assists**

30 vs. South Alabama, Jan. 18, 1992

**Had 15 steals**

15 vs. Alcorn State, Nov. 10, 2025

**Had 20 steals**

23 vs. New Orleans, Nov. 4, 2024

**Had 25 steals**

30 vs. Oral Roberts, Feb. 25, 1993

**Had 10 blocks**

11 vs. McNeese, Nov. 6, 2025

**At least four starters score in double figures**

4 vs. Troy, Dec. 21, 2025

**Five players score in double figures**

vs. Samford, Nov. 19, 2025

**Six players score in double figures**

6, vs. Stetson, Nov. 3, 2025

## STARTING LINEUPS

## Opponent (W/L)

Stetson (W, 82-73)	Timmons	Scott*	Collins	Weathers	Cody
McNeese (W, 64-44)	Timmons	Scott	Collins	Weathers	Cody
Alcorn State (W, 92-39)	Timmons	Scott	Collins	Weathers	Cody
Alabama A&M (W, 66-43)	Timmons	Scott	Collins	Weathers	Cody
Samford (W, 84-45)	Timmons	Scott	Collins	Weathers	Cody
Harvard (W, 80-60)	Timmons	Scott	Collins	Weathers	Cody
Minnesota (W, 63-58)	Timmons	Scott	Collins	Weathers	Cody
Kennesaw State (W, 79-65)	Timmons	Scott	Collins	Weathers	Cody
Clemson (W, 72-48)	Timmons	Scott	Collins	Weathers	Cody
ULM (W, 75-38)	Timmons	Scott	Collins	Weathers	Jones*
Jackson State (W, 62-51)	Timmons	Scott	Collins	Weathers	Jones
Sam Houston (W, 73-36)	Timmons	Scott	Collins	Weathers	Jones
Tulane (W, 81-52)	Timmons	Scott	Collins	Weathers	Jones
Troy (W, 77-59)	Timmons	Scott	Collins	Weathers	Jones
South Carolina (L, 83-57)	Timmons	Scott	Collins	Weathers	Cody
Arkansas (W, 77-48)	Timmons	Scott	Collins	Weathers	Cody
Kentucky (W, 64-51)	Timmons	Scott	Collins	Weathers	Cody
Missouri (W, 74-63)	Timmons	Scott	Collins	Weathers	Jones
Auburn (L, 54-58)	Timmons	Scott	Collins	Weathers	Jones
Tennessee (L, 59-70)	Timmons	Scott	Collins	Weathers	Jones
Mississippi State					
Georgia					
LSU					
Ole Miss					
Texas A&M					
Oklahoma					
South Carolina					
Florida					
Vanderbilt					
Texas					

\*Indicates first career start for Alabama

## TEAM GAME-BY-GAME

Opponent	Result	FG	FG%	3PT	3P%	FT	FT%	O-D-T	PF	A	TO	Stl	Blk
Stetson	W, 82-73	26-62	41.9	7-25	28.0	23-32	71.9	13-25-38	13	12	8	12	5
McNeese	W, 64-44	20-41	48.4	6-19	31.6	18-23	78.3	9-32-41	12	10	22	6	11
Alcorn State	W, 92-39	33-59	55.9	11-22	50.0	15-18	83.3	8-31-39	18	19	15	15	6
Alabama A&M	W, 66-43	25-55	45.5	4-19	21.1	12-19	63.2	10-27-37	16	15	16	11	8
Samford	W, 84-45	31-59	52.5	12-24	50.0	10-16	62.5	13-29-42	10	21	11	8	5
Harvard	W, 80-60	29-53	54.7	5-12	41.7	17-22	77.3	9-24-33	18	16	17	10	3
Minnesota	W, 63-58	22-57	38.6	11-26	42.3	8-9	88.9	11-31-42	12	16	16	4	5
Kennesaw State	W, 79-65	26-56	46.4	7-20	35.0	20-31	64.5	13-30-43	21	16	18	8	8
Clemson	W, 72-48	27-58	46.6	7-18	38.9	11-16	68.8	10-29-39	11	15	6	5	3
ULM	W, 75-38	32-58	55.2	7-24	29.2	4-5	80.0	10-27-37	11	14	18	13	5
Jackson State	W, 62-51	23-52	44.2	3-14	21.4	13-17	76.5	8-29-37	9	10	10	7	7
Sam Houston	W, 73-36	22-58	39.7	10-22	45.5	17-23	73.9	25-34-59	15	16	25	5	6
Tulane	W, 81-52	27-62	43.5	13-33	39.4	14-18	77.8	15-28-43	7	20	12	8	5
Troy	W, 77-59	30-66	45.5	8-25	32.0	9-15	60.0	11-33-44	15	15	12	6	2
South Carolina	L, 57-83	22-60	36.7	9-29	31.0	4-6	66.7	7-22-29	14	13	16	3	10
Arkansas	W, 77-48	29-72	40.3	13-32	40.6	6-8	75.0	16-32-48	11	18	11	9	1
Kentucky	W, 64-51	23-60	38.2	7-23	30.4	11-15	73.3	13-37-40	18	13	15	12	4
Missouri	W, 74-63	28-66	42.4	6-17	35.3	12-13	92.3	9-27-36	19	11	3	8	5
Auburn	L, 54-58	22-50	44.0	5-20	25.0	5-8	62.5	8-20-28	15	6	18	9	3
Tennessee	L, 59-70	21-59	35.6	8-28	28.6	9-13	69.2	15-24-39	15	9	14	8	8
Mississippi State													
Georgia													
LSU													
Ole Miss													
Texas A&M													
Oklahoma													
South Carolina													
Florida													
Vanderbilt													
Texas													





FRESHMAN

**ACE AUSTIN**

#1 | Guard | 5-7

SPRING GARDEN, ALA.  
SPRING GARDEN**2025-26 GAME-BY-GAME**

Opponent	Min.	FG	3P	FT	O-D-T	PF	Pts	A	TO	Stl	Blk
Stetson					DNP						
McNeese	28	1-6	0-3	4-4	1-2-3	2	6	4	1	0	0
Alcorn State	23	4-7	1-2	7-8	2-3-5	2	16	1	1	1	0
Alabama A&M	23	3-7	0-2	3-4	0-1-1	2	9	1	0	1	0
Samford	29	8-14	4-8	1-2	0-2-2	2	21	5	1	3	0
Harvard	26	5-9	3-5	4-4	0-1-1	3	17	1	6	2	0
Minnesota	21	0-5	0-2	0-0	1-2-3	2	0	2	0	0	0
Kennesaw State	5	0-3	0-2	0-0	2-1-3	2	0	1	0	1	0
Clemson	22	0-3	0-1	2-2	1-3-4	2	2	2	1	0	0
ULM	18	1-3	0-2	0-0	0-1-1	1	2	2	2	0	0
Jackson State	22	0-6	0-1	2-2	1-4-5	1	2	3	1	1	1
Sam Houston	22	3-6	0-1	6-6	5-4-9	12	1	2	2	0	0
Tulane	23	3-7	2-4	0-0	1-3-4	3	8	1	1	0	0
Troy	15	0-2	0-1	0-0	0-0-0	3	0	3	0	0	0
South Carolina	25	2-6	1-4	1-2	0-3-3	3	6	3	1	0	1
Arkansas	18	0-6	0-2	1-2	0-4-4	2	1	1	1	3	0
Kentucky	16	1-4	1-2	1-1	0-3-3	4	4	5	3	0	1
Missouri	19	2-3	0-0	4-4	0-0-0	3	8	1	0	0	0
Auburn	13	2-4	1-2	0-0	0-2-2	2	5	0	3	1	0
Tennessee	12	2-7	1-3	0-0	0-1-1	1	5	0	1	1	0

**CAREER HIGHS**

Points	21	Samford (11/19/25)
Rebounds	5	2x, last Jackson State (12/14/25)
Assists	5	2x, last Kentucky (01/08/26)
Steals	3	Samford (11/19/25)
Blocks	1	2x, last Kentucky (01/08/26)
Minutes	30	Samford (11/19/25)
Field Goals	8	Samford (11/19/25)
FG Att.	14	Samford (11/19/25)
3-Point FG	4	Samford (11/19/25)
3-Point Att.	8	Samford (11/19/25)
Free Throws	7	Alcorn (11/10/25)
FT Att.	8	Alcorn (11/10/25)

**2025-26 SEASON HIGHS**

Points	21	Samford (11/19/25)
Rebounds	5	2x, last Jackson State (12/14/25)
Assists	5	2x, last Kentucky (01/08/26)
Steals	3	Samford (11/19/25)
Blocks	1	2x, last Kentucky (01/08/26)
Minutes	30	Samford (11/19/25)
Field Goals	8	Samford (11/19/25)
FG Att.	14	Samford (11/19/25)
3-Point FG	4	Samford (11/19/25)
3-Point Att.	8	Samford (11/19/25)
Free Throws	7	Alcorn (11/10/25)
FT Att.	8	Alcorn (11/10/25)

**MISCELLANEOUS STATS**

CATEGORY	2025-26	CAREER
Games Started		
Double-digit scoring	3	3
20+ point games	1	1
Double-digit rebounding		
Double-doubles		
Led UA in scoring	1	1
Led UA in rebounding		
Led UA in assists	1	1
Led UA in steals	1	1
Led UA in blocks		

**SEASON/CAREER STATS**

Year	GP	GS	Min	Avg	FG	FGA	Pct	3FG	3FGA	Pct	FT	FTA	Pct	Off	Def	Tot	Avg	PF	A	TO	Blk	Stl	Pts	Avg
2025-26	19	0	383	20.2	37	108	.343	14	47	.298	36	41	.878	14	40	54	2.8	42	38	25	2	15	124	6.5
<b>TOTAL</b>	<b>19</b>	<b>0</b>	<b>383</b>	<b>20.2</b>	<b>37</b>	<b>108</b>	<b>.343</b>	<b>14</b>	<b>47</b>	<b>.298</b>	<b>36</b>	<b>41</b>	<b>.878</b>	<b>14</b>	<b>40</b>	<b>54</b>	<b>2.8</b>	<b>42</b>	<b>38</b>	<b>25</b>	<b>2</b>	<b>15</b>	<b>124</b>	<b>6.5</b>



SOPHOMORE

**ERIS LESTER**  
#4 | GUARD | 5-11  
JACKSONVILLE, FLA.  
MONTVERDE ACADEMY

2025-26 GAME-BY-GAME

Opponent	Min.	FG	3P	FT	O-D-T	PF	Pts	A	TO	Stl	Blk
Stetson					DNP						
McNeese	7	1-1	0-0	0-0	0-2-2	0	2	1	1	0	0
Alcorn State	10	2-4	0-1	1-2	1-1-2	1	5	0	1	1	1
Alabama A&M					DNP						
Samford					DNP						
Harvard					DNP						
Minnesota					DNP						
Kennesaw State	8	1-4	0-1	1-4	1-1-2	0	0	1	0	1	0
Clemson	3	0-1	0-0	0-0	0-0-0	1	0	0	0	0	0
ULM	10	2-3	0-0	0-0	0-2-2	1	4	1	2	1	0
Jackson State					DNP						
Sam Houston					DNP						
Tulane					DNP						
Troy					DNP						
South Carolina					DNP						
Arkansas					DNP						
Kentucky					DNP						
Missouri					DNP						
Auburn					DNP						
Tennessee					DNP						

CAREER HIGHS

Points	16	New Orleans (11/04/24)
Rebounds	8	Jacksonville (12/29/24)
Assists	3	Jacksonville (12/29/24)
Steals	2	New Orleans (11/04/24)
Blocks	2	Jacksonville (12/29/24)
Minutes	26	Georgia State (12/02/24)
Field Goals	7	New Orleans (11/04/24)
FG Att.	13	New Orleans (11/04/24)
3-Point FG	2	Georgia State (12/2/24)
3-Point Att.	3	Jacksonville (12/29/24)
Free Throws	4	Alcorn (11/14/24)
FT Att.	6	Texas (01/09/25)

2025-26 SEASON HIGHS

Points	5	Alcorn (11/10/25)
Rebounds	2	ULM (12/07/25)
Assists	1	ULM (12/07/25)
Steals	1	ULM (12/07/25)
Blocks	1	Alcorn (11/10/25)
Minutes	10	ULM (12/07/25)
Field Goals	2	ULM (12/07/25)
FG Att.	4	Kennesaw St. (12/01/25)
3-Point FG		
3-Point Att.	1	Kennesaw St. (12/01/25)
Free Throws	1	Kennesaw St. (12/01/25)
FT Att.	4	Kennesaw St. (12/01/25)

MISCELLANEOUS STATS

CATEGORY	2025-26	CAREER
Games Started		
Double-digit scoring		
20+ point games		
Double-digit rebounding		
Double-doubles		
Led UA in scoring		
Led UA in rebounding		
Led UA in assists		
Led UA in steals		
Led UA in blocks		

SEASON/CAREER STATS

Year	GP	GS	Min	Avg	FG	FGA	Pct	3FG	3FGA	Pct	FT	FTA	Pct	Off	Def	Tot	Avg	PF	A	TO	Blk	Stl	Pts	Avg
2024-25	30	0	291	9.7	45	105	.429	9	25	.360	23	.639	1	20	43	63	2.1	30	11	30	3	7	122	4.1
2025-26	5	0	38	7.6	6	13	.462	0	2	.000	2	6	.333	2	6	8	1.6	3	2	6	1	3	14	2.8
TOTAL	35	0	329	9.4	51	118	.432	9	27	.333	25	42	.595	22	49	71	2.0	33	13	36	4	10	136	3.9



R- SOPHOMORE

REYCHEL DOUGLAS

#5 | GUARD | 6-0

RALEIGH, N.C.

MILLBROOK MAGNET HS

2025-26 GAME-BY-GAME

Opponent	Min.	FG	3P	FT	O-D-T	PF	Pts	A	TO	Stl	Blk
Stetson					DNP						
McNeese					DNP						
Alcorn State	6	1-2	1-1	0-0	0-1-1	0	3	1	0	0	0
Alabama A&M					DNP						
Samford	6	0-0	0-0	0-0	0-0-0	0	0	1	1	0	0
Harvard					DNP						
Minnesota					DNP						
Kennesaw State					DNP						
Clemson					DNP						
ULM	4	0-1	0-0	0-0	0-1-1	0	0	0	2	0	0
Jackson State					DNP						
Sam Houston	11	1-5	0-1	0-0	2-1-3	1	2	1	0	0	1
Tulane	3	0-2	0-2	2-2	1-1-2	0	2	0	2	0	0
Troy					DNP						
South Carolina					DNP						
Arkansas					DNP						
Kentucky					DNP						
Missouri					DNP						
Auburn					DNP						
Tennessee					DNP						

CAREER HIGHS

Points	3	Coastal Carolina (12/06/23)
Rebounds	5	South Carolina (02/22/2023)
Assists	2	Jacksonville (12/20/2023)
Steals	1	Tennessee (03/08/2024)
Blocks	1	LSU (02/11/2024)
Minutes	10:00	South Carolina (02/22/2024)
Field Goals	1	Kentucky (01/28/2024)
FG Att.	3	Tennessee (03/08/2024)
3-Point FG	1	Alcorn (11/10/25)
3-Point Att.	2	Tennessee (03/08/2024)
Free Throws	3	Alabama State (11/06/23)
FT Att.	4	Alabama State (11/06/23)

2025-26 SEASON HIGHS

Points	3	Alcorn (11/10/25)
Rebounds	1	ULM (12/07/25)
Assists	1	Samford (11/19/25)
Steals		
Blocks		
Minutes	6	Samford (11/19/25)
Field Goals	1	Alcorn (11/10/25)
FG Att.	2	Alcorn (11/10/25)
3-Point FG	1	Alcorn (11/10/25)
3-Point Att.	1	Alcorn (11/10/25)
Free Throws		
FT Att.		

MISCELLANEOUS STATS

CATEGORY	2025-26	CAREER
Games Started		
Double-digit scoring		
20+ point games		
Double-digit rebounding		
Double-doubles		
Led UA in scoring		
Led UA in rebounding		
Led UA in assists		
Led UA in steals		
Led UA in blocks		

SEASON/CAREER STATS

Year	GP	GS	Min	Avg	FG	FGA	Pct	3FG	3FGA	Pct	FT	FTA	Pct	Off	Def	Tot	Avg	PF	A	TO	Blk	Stl	Pts	Avg
2023-24	17	0	87	5.1	3	19	.158	0	4	.000	7	14	.500	9	4	13	0.8	5	7	8	2	4	13	.08
2024-25																								
2025-26	5	0	30	6.0	2	10	.200	1	4	.250	2	2	1.000	3	4	7	1.4	1	3	5	1	0	7	1.4
TOTAL	22	0	117	5.3	5	29	.172	1	8	.125	9	16	.563	12	8	20	.9	6	10	13	3	4	20	.9



## WAIATA JENNINGS

#7 | GUARD | 5-9

ROTORUA, NEW ZEALAND  
BAYLOR

## 2025-26 GAME-BY-GAME

Opponent	Min.	FG	3P	FT	O-D-T	PF	Pts	A	TO	Stl	Blk
Stetson					DNP						
McNeese					DNP						
Alcorn State					DNP						
Alabama A&M					DNP						
Samford					DNP						
Harvard					DNP						
Minnesota					DNP						
Kennesaw State	3	0-2	0-2	0-0	0-0-0	2	0	0	1	0	0
Clemson	6	2-2	0-0	0-0	0-0-0	1	4	0	0	1	0
ULM	20	4-7	0-2	1-1	0-2-2	2	9	0	2	4	1
Jackson State	8	1-2	0-1	0-0	0-1-1	0	2	1	1	0	0
Sam Houston	16	0-5	0-3	1-2	1-3-4	2	1	1	3	0	0
Tulane	3	0-0	0-0	0-0	0-0-0	0	0	0	0	0	0
Troy	1	0-0	0-0	0-0	0-0-0	0	0	0	0	0	0
South Carolina	1	0-0	0-0	0-0	0-0-0	0	0	0	0	0	0
Arkansas	18	3-5	2-3	0-0	0-3-3	1	8	0	0	0	0
Kentucky	5	0-1	0-1	0-0	0-0-0	0	0	0	0	0	0
Missouri	2	0-1	0-1	0-0	0-0-0	0	0	0	0	0	0
Auburn	8	0-2	0-1	0-0	0-0-0	0	0	1	1	0	0
Tennessee	7	1-4	0-2	0-0	1-0-1	0	2	1	0	0	0

## CAREER HIGHS (AT UA)

Points	9	ULM (12/07/25)
Rebounds	3	Arkansas (01/04/25)
Assists	1	3x
Steals	4	ULM (12/07/25)
Blocks	1	ULM (12/07/25)
Minutes	20	ULM (12/07/25)
Field Goals	4	ULM (12/07/25)
Field Att.	7	ULM (12/07/25)
3-Point FG	2	Arkansas (01/04/26)
3-Point Att.	3	Arkansas (01/04/26)
Free Throws	1	ULM (12/07/25)
FT Att.	1	ULM (12/07/25)

## 2025-26 SEASON HIGHS

Points	9	ULM (12/07/25)
Rebounds	3	Arkansas (01/04/25)
Assists	1	2x, last at Auburn (01/15/26)
Steals	4	ULM (12/07/25)
Blocks	1	ULM (12/07/25)
Minutes	20	ULM (12/07/25)
Field Goals	4	ULM (12/07/25)
Field Att.	7	ULM (12/07/25)
3-Point FG	2	Arkansas (01/04/26)
3-Point Att.	3	Arkansas (01/04/26)
Free Throws	1	ULM (12/07/25)
FT Att.	1	ULM (12/07/25)

## MISCELLANEOUS STATS

CATEGORY	2025-26	CAREER(UA)
Games Started		64 (0)
Double-digit scoring		63 (0)
20+ point games		39 (0)
Double-digit rebounding		9 (0)
Double-doubles		7 (0)
Led UA in scoring		
Led UA in rebounding		
Led UA in assists		
Led UA in steals		
Led UA in blocks		

## SEASON/CAREER STATS

Year	GP	GS	Min	Avg	FG	FGA	Pct	3FG	3FGA	Pct	FT	FTA	Pct	Off	Def	Tot	Avg	PF	A	TO	Blk	Stl	Pts	Avg
2022-2023 COLL	31	31	889	28.7	201	427	.471	21	83	.253	86	135	.637	51	131	182	5.9	51	72	98	9	92	509	16.4
2023-2024 COLL	33	33	1,135	34.4	284	621	.457	60	183	.328	90	125	.720	44	208	252	7.6	83	109	91	32	117	718	21.8
2024-25 BU	30	0	321	10.7	22	56	.393	13	38	.342	4	4	1.000	5	28	33	11	0	15	13	3	24	61	2.0
2025-26	13	0	99	7.6	11	31	.355	2	16	.125	2	3	.667	2	9	11	0.8	8	4	8	1	5	26	2.0
<b>TOTAL</b>	<b>107</b>	<b>64</b>	<b>2,444</b>	<b>23.0</b>	<b>518</b>	<b>1,135</b>	<b>.456</b>	<b>96</b>	<b>320</b>	<b>.300</b>	<b>182</b>	<b>267</b>	<b>.682</b>	<b>101</b>	<b>373</b>	<b>474</b>	<b>4.4</b>	<b>139</b>	<b>198</b>	<b>206</b>	<b>45</b>	<b>238</b>	<b>1,313</b>	<b>12.3</b>





FRESHMAN

**TIANNA CHAMBERS**

#11 | FORWARD | 6-1

AURORA, COLO.  
CHERRY CREEK**2025-26 GAME-BY-GAME**

Opponent	Min.	FG	3P	FT	O-D-T	PF	Pts	A	TO	Stl	Blk
Stetson					DNP						
McNeese					DNP						
Alcorn State	6	0-0	0-0	0-0	0-0-0	1	0	1	1	1	0
Alabama A&M					DNP						
Samford					DNP						
Harvard					DNP						
Minnesota					DNP						
Kennesaw State					DNP						
Clemson					DNP						
ULM	4	0-0	0-0	0-0	0-1-1	1	0	0	0	0	0
Jackson State	2	0-0	0-0	0-0	0-0-0	2	0	0	1	0	1
Sam Houston	7	1-4	0-0	0-0	0-1-1	0	2	-0	2	0	0
Tulane	2	0-0	0-0	0-2	0-1-1	0	0	0	0	0	0
Troy					DNP						
South Carolina					DNP						
Arkansas	3	0-0	0-0	0-0	0-0-0	0	0	0	0	0	0
Kentucky					DNP						
Missouri					DNP						
Auburn					DNP						
Tennessee					DNP						

**CAREER HIGHS**

Points		
Rebounds	1	ULM (12/07/25)
Assists	1	Alcorn (11/10/25)
Steals	1	Alcorn (11/10/25)
Blocks	1	Jackson State (12/14/25)
Minutes	6	ULM (12/07/25)
Field Goals		
FG Att.		
3-Point FG		
3-Point Att.		
Free Throws		
FT Att.		

**2025-26 SEASON HIGHS**

Points		
Rebounds	1	ULM (12/07/25)
Assists	1	Alcorn (11/10/25)
Steals	1	ULM (12/07/25)
Blocks	1	Jackson State (12/14/25)
Minutes	7	Sam Houston (12/16/15)
Field Goals		
FG Att.		
3-Point FG		
3-Point Att.		
Free Throws		
FT Att.		

**MISCELLANEOUS STATS**

CATEGORY	2025-26	CAREER
Games Started		
Double-digit scoring		
20+ point games		
Double-digit rebounding		
Double-doubles		
Led UA in scoring		
Led UA in rebounding		
Led UA in assists		
Led UA in steals		
Led UA in blocks		

**CAREER STATS**

Year	GP	GS	Min	Avg	FG	FGA	Pct	3FG	3FGA	Pct	FT	FTA	Pct	Off	Def	Tot	Avg	PF	A	TO	Blk	Stl	Pts	Avg
2025-26	6	0	24	4.0	1	4	.250	0	0	.000	0	2	.000	0	3	3	0.5	4	1	4	1	1	2	0.3
<b>TOTALS</b>	<b>6</b>	<b>0</b>	<b>24</b>	<b>4.0</b>	<b>1</b>	<b>4</b>	<b>.250</b>	<b>0</b>	<b>0</b>	<b>.000</b>	<b>0</b>	<b>2</b>	<b>.000</b>	<b>0</b>	<b>3</b>	<b>3</b>	<b>0.5</b>	<b>4</b>	<b>1</b>	<b>4</b>	<b>1</b>	<b>1</b>	<b>2</b>	<b>0.3</b>



SENIOR

**TA'MIA SCOTT**

#15 | GUARD | 6-0

CLARKSVILLE, TENN.  
MIDDLE TENNESSEE**2025-26 GAME-BY-GAME**

Opponent	Min.	FG	3P	FT	O-D-T	PF	Pts	A	TO	Stl	Blk
Stetson	35	5-13	1-6	1-2	0-6-6	1	12	1	0	2	0
McNeese	20	3-6	0-2	1-2	1-1-2	2	7	1	2	1	1
Alcorn State	21	4-6	3-4	0-0	0-2-2	2	11	2	3	2	1
Alabama A&M	24	3-9	1-4	0-0	1-5-6	1	7	1	5	1	1
Samford	26	4-6	2-3	0-0	0-4-4	0	10	3	3	0	1
Harvard	15	1-3	0-1	0-0	0-0-0	0	2	1	1	0	1
Minnesota	22	3-8	2-5	0-0	0-5-5	1	8	2	0	1	0
Kennesaw State	21	2-4	2-3	0-0	0-2-2	1	6	1	1	0	3
Clemson	28	4-13	1-5	0-0	0-4-4	0	9	2	1	0	0
ULM	19	5-8	1-4	0-0	1-3-4	1	11	0	0	0	1
Jackson State	21	1-4	0-1	0-0	0-0-0	0	2	0	1	0	0
Sam Houston	21	4-5	4-5	0-2	0-8-8	1	12	2	1	1	1
Tulane	24	2-7	1-4	2-2	0-2-2	1	7	4	1	1	1
Troy	29	4-9	1-5	0-1	0-1-1	2	9	0	3	0	1
South Carolina	24	2-9	1-5	0-0	0-2-2	1	5	1	1	2	1
Arkansas	20	6-10	4-6	0-0	1-4-5	3	16	1	1	1	0
Kentucky	25	0-3	0-0	0-0	0-3-3	2	0	2	1	0	1
Missouri	39	6-14	2-4	1-2	2-5-7	3	15	1	0	5	1
Auburn	32	5-5	0-0	2-2	0-4-4	3	12	0	2	2	0
Tennessee	27	1-7	0-4	0-0	0-3-3	3	2	2	2	1	2

**CAREER HIGHS (AT UA)**

Points	16	Arkansas (01/04/26)
Rebounds	6	Alabama A&M (11/17/25)
Assists	3	Samford (11/19/25)
Steals	2	Alcorn (11/10/25)
Blocks	3	Kennesaw St. (12/01/25)
Minutes	35	Stetson (11/03/25)
Field Goals	6	Arkansas (01/04/26)
FG Att.	13	Clemson (12/04/25)
3-Point FG	4	Arkansas (01/04/26)
3-Point Att.	6	2x, last Arkansas (01/04/26)
Free Throws	2	Auburn (01/15/26)
FT Att.	2	2x, last Auburn (01/15/26)

**2025-26 SEASON HIGHS**

Points	16	Arkansas (01/04/26)
Rebounds	6	Alabama A&M (11/17/25)
Assists	3	Samford (11/19/25)
Steals	2	Alcorn (11/10/25)
Blocks	3	Kennesaw St. (12/01/25)
Minutes	35	Stetson (11/03/25)
Field Goals	6	Arkansas (01/04/26)
FG Att.	13	Clemson (12/04/25)
3-Point FG	4	Arkansas (01/04/26)
3-Point Att.	6	2x, last Arkansas (01/04/26)
Free Throws	2	Auburn (01/15/26)
FT Att.	2	2x, last Auburn (01/15/26)

**MISCELLANEOUS STATS**

CATEGORY	2025-26	CAREER (UA)
Games Started	16	86 (16)
Double-digit scoring	6	57 (6)
20+ point games		20 (0)
Double-digit rebounding		11 (0)
Double-doubles		8(0)
Led UA in scoring	1	1
Led UA in rebounding		
Led UA in assists		
Led UA in steals		
Led UA in blocks		

**SEASON/CAREER STATS**

Year	GP	GS	Min	Avg	FG	FGA	Pct	3FG	3FGA	Pct	FT	FTA	Pct	Off	Def	Tot	Avg	PF	A	TO	Blk	Stl	Pts	Avg
2022-23 MTSU	25	0	207	8.3	18	41	.439	2	10	.200	14	26	.538	8	34	42	1.7	12	2	9	6	10	52	2.1
2023-24 MTSU	35	35	1,236	35.3	151	341	.443	46	124	.371	80	104	.769	39	158	197	5.6	64	54	68	39	57	428	12.2
2024-24 MTSU	35	35	1,242	35.5	211	471	.448	46	128	.359	118	172	.686	36	196	232	6.6	62	56	90	42	32	586	16.7
2025-2026	20	20	588	29.4	64	140	.457	25	64	.391	23	30	.767	11	50	61	3.0	38	52	33	6	20	176	8.8
<b>TOTALS</b>	<b>115</b>	<b>90</b>	<b>3,179</b>	<b>27.6</b>	<b>445</b>	<b>1,002</b>	<b>.444</b>	<b>120</b>	<b>333</b>	<b>.360</b>	<b>219</b>	<b>315</b>	<b>.695</b>	<b>89</b>	<b>452</b>	<b>541</b>	<b>4.6</b>	<b>168</b>	<b>139</b>	<b>196</b>	<b>103</b>	<b>120</b>	<b>1,229</b>	<b>10.7</b>



FRESHMAN

**LOURDES DA SILVA COSTA**

#17 | FORWARD | 6-3

STOCKHOLM, SWEDEN  
MONTEVERDE ACADEMY**2025-26 GAME-BY-GAME**

Opponent	Min.	FG	3P	FT	O-D-T	PF	Pts	A	TO	Stl	Blk
Stetson	7	0-5	0-2	1-4	2-1-3	0	1	0	1	0	0
McNeese	3	0-0	0-0	0-0	0-0-0	0	0	0	1	0	0
Alcorn State	17	0-1	0-1	0-0	0-3-3	2	0	3	3	1	0
Alabama A&M	7	2-3	0-0	0-0	0-1-1	0	4	1	0	1	0
Samford	9	0-3	0-0	0-0	3-0-3	0	0	0	2	0	1
Harvard	2	0-0	0-0	2-2	0-0-0	0	2	0	0	0	0
Minnesota	2	0-0	0-0	0-0	0-0-0	0	0	0	0	0	0
Kennesaw State	10	2-3	0-0	0-0	1-1-2	0	4	1	0	0	0
Clemson	3	0-0	0-0	0-0	0-0-0	0	0	0	0	0	0
ULM	14	3-7	0-0	0-0	2-1-3	1	6	1	2	0	0
Jackson State	12	2-2	0-0	2-2	1-3-4	0	6	2	5	1	0
Sam Houston	18	3-6	1-1	2-2	6-2-8	2	9	3	6	0	1
Tulane	11	1-3	0-0	2-2	4-2-6	0	4	0	1	0	1
Troy	3	0-2	0-1	0-0	0-0-0	0	0	0	0	0	0
South Carolina	7	0-4	0-1	0-0	0-3-3	0	0	0	0	0	0
Arkansas	7	2-4	1-3	0-0	0-0-0	0	5	0	1	1	0
Kentucky					DNP						
Missouri	3	0-3	0-0	0-0	1-0-1	1	0	0	0	0	0
Auburn					DNP						
Tennessee					DNP						

**CAREER HIGHS**

Points	6	ULM (12/07/25)
Rebounds	4	Jackson State (12/14/25)
Assists	3	Alcorn (11/10/25)
Steals	1	2x, last Arkansas (01/04/26)
Blocks	1	Samford (11/19/25)
Minutes	17	Alcorn (11/10/25)
Field Goals	3	ULM (12/07/25)
FG Att.	7	ULM (12/07/25)
3-Point FG	1	Arkansas (01/04/26)
3-Point Att.	2	Stetson (11/03/25)
Free Throws	2	Harvard (11/24/25)
FT Att.	4	Stetson (11/03/25)

**2025-26 SEASON HIGHS**

Points	6	ULM (12/07/25)
Rebounds	4	Jackson State (12/14/25)
Assists	3	Alcorn (11/10/25)
Steals	1	2x, last Arkansas (01/04/26)
Blocks	1	Samford (11/19/25)
Minutes	17	Alcorn (11/10/25)
Field Goals	3	ULM (12/07/25)
FG Att.	7	ULM (12/07/25)
3-Point FG	1	Arkansas (01/04/26)
3-Point Att.	2	Stetson (11/03/25)
Free Throws	2	Harvard (11/24/25)
FT Att.	4	Stetson (11/03/25)

**MISCELLANEOUS STATS**

CATEGORY	2025-26	CAREER
Games Started		
Double-digit scoring		
20+ point games		
Double-digit rebounding		
Double-doubles		
Led UA in scoring		
Led UA in rebounding		
Led UA in assists		
Led UA in steals		
Led UA in blocks		

**SEASON/CAREER STATS**

Year	GP	GS	Min	Avg	FG	FGA	Pct	3FG	3FGA	Pct	FT	FTA	Pct	Off	Def	Tot	Avg	PF	A	TO	Blk	Stl	Pts	Avg
2025-26	16	0	132	8.2	15	43	.349	2	9	.222	9	12	.750	19	17	36	2.2	5	11	23	1	6	41	2.6
<b>TOTALS</b>	<b>16</b>	<b>0</b>	<b>132</b>	<b>8.2</b>	<b>15</b>	<b>43</b>	<b>.349</b>	<b>2</b>	<b>9</b>	<b>.222</b>	<b>9</b>	<b>12</b>	<b>.750</b>	<b>19</b>	<b>17</b>	<b>36</b>	<b>2.2</b>	<b>5</b>	<b>11</b>	<b>23</b>	<b>1</b>	<b>6</b>	<b>41</b>	<b>2.6</b>



JUNIOR

DIANA COLLINS

#20 | GUARD | 5-9

LILBURN, GA.  
OHIO STATE

2025-26 GAME-BY-GAME

Opponent	Min.	FG	3P	FT	O-D-T	PF	Pts	A	TO	Stl	Blk
Stetson	36	4-9	1-4	3-3	0-5-5	3	12	1	1	3	1
McNeese	29	2-5	1-4	1-2	1-3-4	1	6	0	6	1	0
Alcorn State	20	4-5	0-0	1-1	0-3-3	3	9	4	1	2	0
Alabama A&M	31	4-6	2-4	0-0	0-0-0	2	10	3	3	0	0
Samford	24	0-5	0-2	2-2	0-3-3	1	2	3	0	2	0
Harvard	31	0-0	0-0	1-2	1-1-2	2	1	3	3	0	0
Minnesota	30	2-6	2-3	0-0	1-2-3	1	6	3	2	1	0
Kennesaw State	35	4-8	2-4	2-4	0-3-3	3	12	3	4	1	0
Clemson	26	3-4	0-0	2-3	1-1-2	2	8	2	0	0	0
ULM	23	0-4	0-3	0-0	0-0-0	1	0	4	0	3	1
Jackson State	34	8-9	2-2	2-2	0-6-6	1	20	0	0	2	1
Sam Houston	22	1-4	1-4	4-4	0-0-0	2	7	3	2	0	0
Tulane	31	6-10	4-7	1-2	3-2-5	1	17	7	0	0	0
Troy	35	3-11	1-4	3-4	0-8-8	2	10	4	0	2	0
South Carolina	23	7-13	3-4	0-0	1-0-1	2	17	1	5	0	1
Arkansas	30	4-7	2-3	0-0	1-1-2	1	10	5	1	1	0
Kentucky	37	6-16	3-9	1-1	0-4-4	1	16	2	1	1	0
Missouri	26	2-4	0-0	0-0	0-3-3	4	4	1	0	1	0
Auburn	33	0-5	0-3	0-0	1-1-2	2	0	1	1	1	0
Tennessee	32	4-9	1-4	0-0	1-4	3	9	2	3	1	0

CAREER HIGHS (AT UA)

Points	20	Jackson State (12/14/25)
Rebounds	8	Troy (12/21/25)
Assists	7	Tulane (12/17/25)
Steals	3	ULM (12/07/25)
Blocks	2	Samford (11/19/25)
Minutes	36	Stetson (11/03/25)
Field Goals	8	Jackson State (12/14/25)
FG Att.	13	South Carolina (01/01/26)
3-Point FG	4	Tulane (12/17/25)
3-Point Att.	7	Tulane (12/17/25)
Free Throws	6	Missouri (01/05/25)
FT Att.	6	Missouri (01/05/25)

2025-26 SEASON HIGHS

Points	20	Jackson State (12/14/25)
Rebounds	8	Troy (12/21/25)
Assists	7	Tulane (12/17/25)
Steals	3	ULM (12/07/25)
Blocks	2	Samford (11/19/25)
Minutes	36	Stetson (11/03/25)
Field Goals	8	Jackson State (12/14/25)
FG Att.	13	South Carolina (01/01/26)
3-Point FG	4	Tulane (12/17/25)
3-Point Att.	7	Tulane (12/17/25)
Free Throws	4	Sam Houston (12/16/25)
FT Att.	4	2x, last Troy (12/21/25)

MISCELLANEOUS STATS

CATEGORY	2025-26	CAREER (UA)
Games Started	17	22 (22)
Double-digit scoring	3	10 (9)
20+ point games	1	1(1)
Double-digit rebounding		
Double-doubles		
Led UA in scoring	1	1(1)
Led UA in rebounding		
Led UA in assists	1	1
Led UA in steals		
Led UA in blocks		

SEASON/CAREER STATS

Year	GP	GS	Min	Avg	FG	FGA	Pct	3FG	3FGA	Pct	FT	FTA	Pct	Off	Def	Tot	Avg	PF	A	TO	Blk	Stl	Pts	Avg
2023-24 OSU	18	0	176	9.8	20	66	.303	6	27	.222	8	11	.727	8	13	21	1.2	22	1	4	1	9	54	3.0
2024-25	31	5	634	20.5	59	145	.407	25	71	.352	26	42	.619	17	52	69	2.2	59	47	42	1	22	169	5.5
2025-26	20	20	588	29.4	64	140	.457	25	64	.391	23	30	.767	11	50	61	3.0	38	52	33	6	20	176	8.8
TOTAL	69	25	1398	20.4	143	351	.407	56	162	.346	57	83	.687	36	115	151	2.2	119	103	85	8	51	399	5.8





JUNIOR

ESSENCE CODY

#21 | FORWARD | 6-4

VALDOSTA, GA.  
VALDOSTA HS

2025-26 GAME-BY-GAME											
Opponent	Min.	FG	3P	FT	O-D-T	PF	Pts	A	TO	Stl	Blk
Stetson	17	3-7	2-3	4-6	4-0-4	4	12	0	0	1	0
McNeese	32	7-9	1-1	8-11	3-8-11	1	23	0	1	1	6
Alcorn State	23	7-9	1-1	2-2	2-3-5	1	17	0	1	1	1
Alabama A&M	29	5-11	0-1	3-6	3-4-7	1	13	0	0	3	3
Samford	26	4-6	0-2	2-2	2-3-5	1	10	0	1	3	2
Harvard	24	6-9	0-0	4-6	2-4-6	4	16	1	0	1	1
Minnesota	30	7-11	0-2	4-5	0-6-6	3	18	1	1	1	1
Kennesaw State	19	3-7	0-0	2-2	0-4-4	4	8	0	2	1	3
Clemson	30	7-11	2-4	5-9	1-4-5	3	21	2	1	1	1
ULM					DNP						
Jackson State					DNP						
Sam Houston					DNP						
Tulane					DNP						
Troy	22	7-9	1-2	1-2	2-3-5	3	16	0	4	2	0
South Carolina	26	3-7	0-1	0-0	1-1-2	2	6	3	1	0	3
Arkansas	22	5-10	1-3	4-4	2-2-4	1	15	0	3	3	0
Kentucky	14	2-6	0-0	2-3	1-1-2	3	6	0	3	2	0
Missouri					DNP						
Auburn					DNP						

CAREER HIGHS		
Points	23	2x, last McNeese (11/06/25)
Rebounds	14	vs. Florida State (3/22/24)
Assists	3	South Carolina (01/01/26)
Steals	5	2x, last Maryland (3/24/25)
Blocks	6	McNeese (11/06/25)
Minutes	41:07	Maryland (3/24/25)
Field Goals	8	vs. Florida State (3/22/24)
FG Att.	15	South Carolina (01/16/25)
3-Point FG	2	2x, last Clemson (12/04/25)
3-Point Att.	5	Texas (01/09/25)
Free Throws	8	McNeese (11/06/25)
FT Att.	12	Alcorn State (11/14/24)

2025-26 SEASON HIGHS		
Points	23	McNeese (11/06/25)
Rebounds	11	McNeese (11/06/25)
Assists	3	South Carolina (01/01/26)
Steals	3	2x, last Arkansas (01/04/26)
Blocks	6	McNeese (11/06/25)
Minutes	32	McNeese (11/06/25)
Field Goals	7	2x, last Troy (12/21/25)
FG Att.	11	Clemson (12/04/25)
3-Point FG	2	Clemson (12/04/25)
3-Point Att.	4	Clemson (12/04/25)
Free Throws	8	McNeese (11/06/25)
FT Att.	11	McNeese (11/06/25)

MISCELLANEOUS STATS		
CATEGORY	2024-25	CAREER
Games Started	32	78
Double-digit scoring	20	35
20+ point games		3
Double-digit rebounding	3	7
Double-doubles	2	5
Led UA in scoring	2	5
Led UA in rebounding	9	23
Led UA in assists		0
Led UA in steals	3	4
Led UA in blocks	21	45

SEASON/CAREER STATS																									
Year	GP	GS	Min	Avg	FG	FGA	Pct	3FG	3FGA	Pct	FT	FTA	Pct	Off	Def	Tot	Avg	PF	A	TO	Blk	Stl	Pts	Avg	
2023-24	34	34	770	22.6	101	224	.451	6	24	.250	70	114	.614	90	131	221	6.5	124	9	60	67	24	278	8.2	
2024-25	33	32	834	25.3	135	253	.534	9	36	.250	88	118	.746	61	148	209	6.3	106	22	60	57	36	367	11.1	
2025-26	13	12	314	24.2	66	112	.589	8	20	.400	41	58	.707	23	43	66	5.1	31	7	18	21	20	181	13.9	
TOTAL	80	78	1918	24.0	302	589	.513	23	80	.287	199	290	.686	174	322	496	6.2	261	38	138	145	80	826	10.3	



SENIOR

**KARLY WEATHERS**  
#22 | GUARD | 5-11  
LORETTO, TENN.  
LORETTO HS

2025-26 GAME-BY-GAME

Opponent	Min.	FG	3P	FT	O-D-T	PF	Pts	A	TO	Stl	Blk
Stetson	38	3-6	2-5	3-4	1-6-7	1	11	3	3	2	0
McNeese	24	4-7	4-7	2-2	0-7-7	1	14	1	3	2	0
Alcorn State	22	3-5	3-5	0-0	0-5-5	0	9	0	1	0	0
Alabama A&M	25	0-6	0-4	0-0	1-4-5	4	0	5	2	1	1
Samford	30	5-8	3-5	0-0	3-3-6	1	13	4	2	1	0
Harvard	39	1-5	0-3	0-0	0-10-10	2	2	4	3	3	0
Minnesota	35	4-10	3-6	0-0	1-6-7	1	11	4	5	1	2
Kennesaw State	37	4-9	2-5	3-4	3-3-6	2	13	4	0	2	0
Clemson	33	4-7	1-2	0-0	0-5-5	0	9	2	1	1	0
ULM	29	4-9	3-8	0-0	0-3-3	0	11	4	1	1	2
Jackson State	27	3-9	1-5	0-0	1-4-5	0	7	3	0	2	1
Sam Houston	23	2-3	2-3	0-0	0-5-5	0	6	2	2	0	2
Tulane	31	3-10	2-8	2-2	2-3-5	0	10	1	1	0	2
Troy	38	6-13	3-7	0-2	2-7-9	0	15	3	2	1	1
South Carolina	31	3-7	2-6	1-2	1-3-4	0	9	2	1	1	0
Arkansas	23	3-9	2-6	0-0	2-4-6	1	8	6	0	0	0
Kentucky	38	3-6	1-4	0-0	3-5-8	1	7	2	3	7	0
Missouri	40	9-13	2-5	3-3	0-7-7	2	23	3	0	1	0
Auburn	38	4-10	2-7	0-2	4-7-11	1	10	3	3	3	0
Tennessee	36	4-11	3-7	0-0	1-6-7	0	11	0	0	3	0

CAREER HIGHS

Points	21	North Florida (12/22/22)
Rebounds	11	Oklahoma (03/02/25)
Assists	10	Florida (03/06/25)
Steals	7	Kentucky (01/08/26)
Blocks	3	Little Rock (12/15/22)
Minutes	50	Maryland (03/24/25)
Field Goals	7	3x, last Arkansas (01/19/25)
FG Att.	12	Green Bay (03/22/25)
3-Point FG	5	2x, last Arkansas (01/19/25)
3-Point Att.	9	North Florida (12/22/22)
Free Throws	5	Georgia (02/02/25)
FT Att.	6	Georgia (02/02/25)

2025-26 SEASON HIGHS

Points	15	Troy (12/21/25)
Rebounds	10	Harvard (11/24/25)
Assists	6	Arkansas (01/04/26)
Steals	7	Kentucky (01/08/26)
Blocks	2	Minnesota (11/26/25)
Minutes	39	Harvard (11/24/25)
Field Goals	6	Troy (12/21/25)
FG Att.	13	Troy (12/21/25)
3-Point FG	4	McNeese (11/06/25)
3-Point Att.	8	2x, last Tulane (12/17/25)
Free Throws	3	Kennesaw St. (12/01/25)
FT Att.	4	Kennesaw St. (12/01/25)

MISCELLANEOUS STATS

CATEGORY	2024-25	CAREER
Games Started	33	56
Double-digit scoring	8	19
20+ point games		1
Double-digit rebounding	3	7
Double-doubles		2
Led UA in scoring		
Led UA in rebounding		
Led UA in assists		
Led UA in steals		
Led UA in blocks		

SEASON/CAREER STATS

Year	GP	GS	Min	Avg	FG	FGA	Pct	3FG	3FGA	Pct	FT	FTA	Pct	Off	Def	Tot	Avg	PF	A	TO	Blk	Stl	Pts	Avg
2022-23	27	0	352	13.0	35	85	.412	22	55	.400	13	18	.722	20	27	47	1.7	19	22	20	6	27	105	3.9
2023-24	34	4	775	22.8	65	158	.411	25	80	.313	19	28	.679	48	84	132	3.9	24	67	36	15	40	174	5.1
2024-25	33	33	1099	33.3	83	200	.415	46	123	.374	26	38	.684	50	127	177	5.4	39	115	48	9	59	238	7.2
2025-26	20	20	648	32.4	72	163	.442	41	108	.380	14	21	.667	25	103	128	6.4	17	56	33	6	37	199	9.9
TOTALS	114	57	2874	25.2	255	606	.421	134	366	.366	72	105	.686	143	341	484	4.2	99	260	137	36	163	716	6.3



R-SENIOR

**JESSICA TIMMONS**

#23 | GUARD | 5-8

CHARLOTTE, N.C.  
NC STATE**2025-26 GAME-BY-GAME**

Opponent	Min.	FG	3P	FT	O-D-T	PF	Pts	A	TO	Stl	Blk
Stetson	37	6-14	1-5	8-9	1-2-3	1	21	5	3	1	0
McNeese	28	1-5	0-2	2-2	0-7-7	1	4	2	4	1	0
Alcorn State	28	3-11	2-6	1-1	1-7-8	0	9	7	0	3	1
Alabama A&M	31	4-8	1-4	4-5	0-5-5	3	13	1	2	0	0
Samford	21	3-5	3-4	3-6	0-3-3	3	12	3	0	0	0
Harvard	30	10-17	2-3	3-4	2-1-3	4	25	0	3	1	0
Minnesota	35	6-14	4-7	2-2	1-1-2	2	18	3	1	0	0
Kennesaw State	32	5-8	1-3	10-10	1-6-7	4	21	5	1	1	0
Clemson	31	7-15	3-6	2-2	1-2-3	1	19	4	1	1	0
ULM	24	7-8	3-4	0-0	1-1-2	0	17	1	2	1	0
Jackson State	37	2-12	0-3	2-2	1-2-3	2	6	1	0	0	0
Sam Houston	21	4-9	2-3	1-3	2-1-3	1	11	1	3	0	1
Tulane	30	6-11	4-8	2-2	0-4-4	1	19	5	2	0	3
Troy	37	8-15	2-5	5-6	2-10-12	2	23	4	1	0	0
South Carolina	31	4-10	2-8	2-2	0-3-3	1	12	1	0	0	0
Arkansas	24	4-11	1-6	0-0	1-4-5	1	9	3	2	0	0
Kentucky	38	8-16	2-7	6-7	0-4-4	3	24	2	4	1	0
Missouri	30	6-16	2-7	2-2	1-6-7	3	16	3	1	1	0
Auburn	36	6-18	2-7	2-2	0-5-5	5	16	1	4	2	0
Tennessee	38	7-16	3-8	5-5	1-2-3	3	22	3	2	0	0

**CAREER HIGHS (AT UA)**

Points	26	at Auburn (1/21/24)
Rebound	12	Troy (12/21/25)
Assists	7	Alcorn (11/10/25)
Steals	3	5x, last time vs. Tulane (12/17/25)
Blocks	1	3x, last vs. Alcorn (11/10/25)
Minutes	38	Troy (12/21/25)
Field Goals	10	Harvard (11/24/25)
FG Att.	18	2x, last at South Carolina (02/22/24)
3-Point FG	4	2x, last Tulane (12/17/25)
3-Point Att.	8	2x, South Carolina (01/01/26)
Free Throws	10	Kennesaw St. (12/01/25)
FT Att.	10	4x, last vs Kennesaw St. (12/01/25)

**2025-26 SEASON HIGHS**

Points	25	Harvard (11/24/25)
Rebound	12	Troy (12/21/25)
Assists	7	Alcorn (11/10/25)
Steals	3	2x, last Tulane (12/17/25)
Blocks	1	Alcorn (11/10/25)
Minutes	38	Troy (12/21/25)
Field Goals	10	Harvard (11/24/25)
FG Att.	17	Harvard (11/24/25)
3-Point FG	4	2x, last Tulane (12/17/25)
3-Point Att.	8	South Carolina (01/01/26)
Free Throws	10	Kennesaw St. (12/01/25)
FT Att.	10	Kennesaw St. (12/01/25)

**MISCELLANEOUS STATS**

CATEGORY	2025-26	CAREER (UA)
Games Started	19	47(47)
Double-digit scoring	9	27(26)
20+ point games	5	5(5)
Double-digit rebounding	1	1
Double-doubles		
Led UA in scoring	2	4
Led UA in rebounding		6
Led UA in assists		6
Led UA in steals		2
Led UA in blocks		

**SEASON/CAREER STATS**

Year	GP	GS	Min	Avg	FG	FGA	Pct	3FG	3FGA	Pct	FT	FTA	Pct	Off	Def	Tot	Avg	PF	A	TO	Blk	Stl	Pts	Avg
2021-22 NC State	20	0	151	7.5	17	53	.321	6	20	.300	14	21	.667	3	12	15	0.8	14	6	5	0	5	54	2.7
2022-23 NC State	18	0	173	9.6	19	19	.463	9	21	.429	8	12	.667	1	21	22	1.2	17	16	11	1	3	55	3.1
2023-24	32	30	861	26.9	127	297	.428	33	105	.314	71	91	.780	26	117	143	4.5	62	1	73	1	32	358	11.2
2024-25																								
2025-26	20	20	620	31.0	107	239	.448	40	106	.377	62	72	.861	16	72	88	4.4	43	55	36	1	17	316	15.8
<b>TOTALS</b>	<b>90</b>	<b>48</b>	<b>1247</b>	<b>20.1</b>	<b>270</b>	<b>630</b>	<b>.429</b>	<b>88</b>	<b>252</b>	<b>.349</b>	<b>155</b>	<b>196</b>	<b>.791</b>	<b>46</b>	<b>222</b>	<b>268</b>	<b>3.0</b>	<b>136</b>	<b>150</b>	<b>124</b>	<b>3</b>	<b>57</b>	<b>783</b>	<b>8.7</b>



SOPHOMORE

**LEAH BROOKS**

#24 | FORWARD | 6-3

TONEY, ALA.  
HAZEL GREEN HS**2025-26 GAME-BY-GAME**

Opponent	Min.	FG	3P	FT	O-D-T	PF	Pts	A	TO	Stl	Blk
Stetson	3	0-0	0-0	0-0	0-0-0	0	0	0	0	0	0
McNeese					DNP						
Alcorn State	6	0-1	0-1	0-0	0-0-0	0	0	0	0	1	0
Alabama A&M					DNP						
Samford	5	1-2	0-0	0-0	0-0-0	0	2	0	0	0	0
Harvard					DNP						
Minnesota					DNP						
Kennesaw State	1	0-0	0-0	0-0	2-0-2	0	0	0	1	0	0
Clemson					DNP						
ULM	6	1-2	0-1	0-0	1-2-3	0	2	0	0	0	0
Jackson State	5	1-2	0-1	0-0	1-1-2	0	2	0	0	0	0
Sam Houston	14	0-1	0-1	0-0	1-3-4	1	0	1	1	0	0
Tulane	13	2-3	0-0	0-0	0-1-1	0	4	1	2	1	0
Troy	2	0-0	0-0	0-0	0-0-0	0	0	0	0	0	0
South Carolina	2	0-0	0-0	0-0	0-0-0	1	0	0	0	0	0
Arkansas					DNP						
Kentucky					DNP						
Missouri					DNP						
Auburn					DNP						
Tennessee					DNP						

**CAREER HIGHS**

Points	4	Texas A&M (02/17/25)
Rebounds	3	ULM (12/07/25)
Assists		
Steals	1	4x, last vs. Alcorn (11/10/25)
Blocks	1	2x, last Jacksonville (12/29/24)
Minutes	13	New Orleans (11/4/24)
Field Goals	2	Texas A&M (02/17/25)
FG Att.	3	3x, last Texas A&M (02/17/25)
3-Point FG		
3-Point Att.	1	3x, last vs. ULM (12/07/25)
Free Throws	2	Missouri (01/05/25)
FT Att.	4	Missouri (01/05/25)

**2025-26 SEASON HIGHS**

Points	2	ULM (12/07/25)
Rebounds	3	ULM (12/07/25)
Assists		
Steals	1	Alcorn (11/10/25)
Blocks		
Minutes	6	ULM (12/07/25)
Field Goals	1	ULM (12/07/25)
FG Att.	2	ULM (12/07/25)
3-Point FG		
3-Point Att.	1	ULM (12/07/25)
Free Throws		
FT Att.		

**MISCELLANEOUS STATS**

CATEGORY	2025-26	CAREER
Games Started		
Double-digit scoring		
20+ point games		
Double-digit rebounding		
Double-doubles		
Led UA in scoring		
Led UA in rebounding		
Led UA in assists		
Led UA in steals		
Led UA in blocks		

**SEASON/CAREER STATS**

Year	GP	GS	Min	Avg	FG	FGA	Pct	3FG	3FGA	Pct	FT	FTA	Pct	Off	Def	Tot	Avg	PF	A	TO	Blk	Stl	Pts	Avg
2024-25	20	0	93	4.7	7	16	.438	0	3	.000	2	5	.400	3	11	14	0.7	6	0	1	2	3	16	0.8
2025-26	10	0	57	5.7	5	11	.455	0	4	.000	0	0	.000	5	7	12	1.2	2	2	4	1	1	10	1.0
<b>TOTALS</b>	<b>30</b>	<b>0</b>	<b>150</b>	<b>5.0</b>	<b>12</b>	<b>27</b>	<b>.444</b>	<b>0</b>	<b>7</b>	<b>.000</b>	<b>2</b>	<b>5</b>	<b>.400</b>	<b>8</b>	<b>18</b>	<b>26</b>	<b>.9</b>	<b>8</b>	<b>2</b>	<b>5</b>	<b>3</b>	<b>4</b>	<b>26</b>	<b>.9</b>





FRESHMAN

**JOY EGBUNA**

#25 | FORWARD | 6-3

ARLINGTON, TEXAS  
FAITH FAMILY ACADEMY**2025-26 GAME-BY-GAME**

Opponent	Min.	FG	3P	FT	O-D-T	PF	Pts	A	TO	Stl	Blk
Stetson					DNP						
McNeese					DNP						
Alcorn State	6	2-3	0-0	0-0	0-0-0	3	4	0	0	0	1
Alabama A&M	5	0-0	0-0	1-2	0-0-0	1	1	0	0	0	0
Samford	2	0-2	0-0	1-2	1-0-1	0	1	0	0	0	0
Harvard					DNP						
Minnesota					DNP						
Kennesaw State	1	0-0	0-0	0-0	0-0-0	0	0	0	1	0	0
Clemson					DNP						
ULM	5	0-0	0-0	2-2	0-0-0	1	2	0	1	0	0
Jackson State	4	0-0	0-0	0-0	1-0-1	1	0	0	1	0	0
Sam Houston	7	0-2	0-0	0-0	1-1-2	3	0	0	1	0	1
Tulane	1	0-1	0-0	0-0	0-0-0	0	0	0	0	0	0
Troy					DNP						
South Carolina					DNP						
Arkansas	4	0-1	0-0	1-2	0-1-1	0	0	0	0	0	0
Kentucky					DNP						
Missouri					DNP						
Auburn					DNP						
Tennessee	2	0-0	0-0	0-0	0-0-0	0	0	0	0	1	0

**CAREER HIGHS**

Points	4	Alcorn (11/10/25)
Rebounds	2	Sam Houston (12/16/25)
Assists		
Steals	1	Tennessee (01/18/26)
Blocks	1	2x, last Sam Houston (12/16/25)
Minutes	7	Sam Houston (12/16/25)
Field Goals	2	Alcorn (11/10/25)
FG Att.	3	Alcorn (11/10/25)
3-Point FG		
3-Point Att.		
Free Throws	2	ULM (12/07/25)
FT Att.	2	ULM (12/07/25)

**2025-26 SEASON HIGHS**

Points	4	Alcorn (11/10/25)
Rebounds	2	Sam Houston (12/16/25)
Assists		
Steals		
Blocks	1	2x, last Sam Houston (12/16/25)
Minutes	7	Sam Houston (12/16/25)
Field Goals	2	Alcorn (11/10/25)
FG Att.	3	Alcorn (11/10/25)
3-Point FG		
3-Point Att.		
Free Throws	2	ULM (12/07/25)
FT Att.	2	ULM (12/07/25)

**MISCELLANEOUS STATS**

CATEGORY	2025-26	CAREER
Games Started		
Double-digit scoring		
20+ point games		
Double-digit rebounding		
Double-doubles		
Led UA in scoring		
Led UA in rebounding		
Led UA in assists		
Led UA in steals		
Led UA in blocks		

**SEASON/CAREER STATS**

Year	GP	GS	Min	Avg	FG	FGA	Pct	3FG	3FGA	Pct	FT	FTA	Pct	Off	Def	Tot	Avg	PF	A	TO	Blk	Stl	Pts	Avg
2025-26	10	0	37	3.7	2	9	.222	0	0	.000	4	6	.667	3	2	5	.5	9	0	4	2	1	8	0.8
TOTALS	10	0	37	3.7	2	9	.222	0	0	.000	4	6	.667	3	2	5	.5	9	0	4	2	1	8	0.8



R-SOPHOMORE

**NAOMI JONES**

#31 | FORWARD | 6-4

JACKSON, ALA.  
JACKSON HS**2025-26 GAME-BY-GAME**

Opponent	Min.	FG	3P	FT	O-D-T	PF	Pts	A	TO	Stl	Blk
Stetson	4	0-2	0-0	0-0	0-2-2	0	0	0	0	0	0
McNeese	7	0-0	0-0	0-0	0-2-2	1	0	0	0	0	2
Alcorn State	12	3-5	0-0	3-4	2-2-4	3	9	0	2	2	1
Alabama A&M	7	1-1	0-0	0-0	0-1-1	1	2	0	0	2	1
Samford	11	3-4	0-0	1-2	2-4-6	1	7	0	0	0	0
Harvard	16	3-5	0-0	1-2	3-3-6	2	7	1	0	2	1
Minnesota	12	0-2	0-0	0-0	4-2-6	1	0	2	0	0	0
Kennesaw State	17	3-6	0-0	2-6	0-7-7	2	8	1	2	0	1
Clemson	10	0-2	0-0	0-0	1-6-7	0	0	0	1	0	2
ULM	22	5-6	0-0	1-2	1-6-7	2	11	1	2	2	1
Jackson State	28	5-6	0-0	5-9	1-6-7	0	15	0	0	1	3
Sam Houston	18	4-8	0-0	3-4	5-4-9	1	11	1	1	0	3
Tulane	28	4-8	0-0	3-4	4-6-10	1	11	1	2	1	3
Troy	16	2-5	0-0	0-0	3-0-3	3	4	1	1	1	0
South Carolina	19	0-2	0-0	0-0	1-4-5	3	0	3	0	0	4
Arkansas	14	0-5	0-0	1-2	2-4-6	0	1	1	1	0	1
Kentucky	23	2-6	0-0	1-3	5-3-8	3	5	0	0	0	3
Missouri	19	2-10	0-0	2-2	2-1-3	0	6	1	2	0	4
Auburn	22	2-3	0-0	1-2	0-0-0	0	5	0	1	0	3
Tennessee	31	1-3	0-0	3-6	6-5-11	4	5	1	1	0	6

**CAREER HIGHS**

Points	15	Jackson State (12/14/25)
Rebounds	10	Tulane (12/17/25)
Assists	2	2x, last South Carolina (01/01/26)
Steals	2	2x, last vs ULM (12/07/25)
Blocks	4	South Carolina (01/01/26)
Minutes	28	2x, last Tulane (12/17/25)
Field Goals	5	4x, last Jackson State (12/14/25)
FG Att.	8	Tulane (12/17/25)
3-Point FG		
3-Point Att.		
Free Throws	5	Jackson State (12/14/25)
FT Att.	9	2x, last Jackson State (12/14/25)

**2025-26 SEASON HIGHS**

Points	15	Jackson State (12/14/25)
Rebounds	10	Tulane (12/17/25)
Assists	2	South Carolina (01/01/26)
Steals	2	2x, last vs ULM (12/07/25)
Blocks	4	South Carolina (01/01/26)
Minutes	28	2x, last Tulane (12/17/25)
Field Goals	5	4x, last Jackson State (12/14/25)
FG Att.	8	Tulane (12/17/25)
3-Point FG		
3-Point Att.		
Free Throws	5	Jackson State (12/14/25)
FT Att.	9	2x, last Jackson State (12/14/25)

**MISCELLANEOUS STATS**

CATEGORY	2025-26	CAREER
Games Started	2	2
Double-digit scoring	2	2
20+ point games		
Double-digit rebounding		
Double-doubles		
Led UA in scoring		
Led UA in rebounding	2	2
Led UA in assists		
Led UA in steals		
Led UA in blocks		

**SEASON/CAREER STATS**

Year	GP	GS	Min	Avg	FG	FGA	Pct	3FG	3FGA	Pct	FT	FTA	Pct	Off	Def	Tot	Avg	PF	A	TO	Blk	Stl	Pts	Avg
2023-24	16	0	151	9.4	12	27	.444	0	0	.000	13	27	.481	20	22	42	2.6	25	2	14	10	2	37	2.3
2024-25																								
2025-26	20	8	339	16.9	40	89	.449	0	0	.000	27	48	.563	42	68	110	5.5	29	11	18	39	11	107	5.3
TOTALS	36	8	490	13.6	52	116	.448	0	0	.000	40	75	.533	62	90	152	4.2	54	13	32	49	13	144	4.0



JUNIOR

ALANCIA RAMSEY

#32 | FORWARD | 6-0

DELRAY BEACH, FLA.

COASTAL CAROLINA

2025-26 GAME-BY-GAME

Opponent	Min.	FG	3P	FT	O-D-T	PF	Pts	A	TO	Stl	Blk
Stetson	23	3-6	2-5	3-4	4-2-6	6	13	2	0	3	0
McNeese	9	1-2	0-0	0-0	0-0-0	1	2	1	3	0	2
Alcorn State					DNP						
Alabama A&M	18	3-4	0-0	1-2	4-2-6	1	7	3	1	2	2
Samford	10	3-4	0-0	0-0	2-3-5	1	6	2	1	0	0
Harvard	17	3-5	0-0	2-2	1-1-2	1	8	5	1	1	0
Minnesota	13	0-1	0-1	2-2	1-5-6	0	2	1	2	0	2
Kennesaw State	11	2-2	0-0	0-1	1-1-2	1	4	0	3	1	1
Clemson	8	0-0	0-0	0-0	0-1-1	1	0	1	0	1	0
ULM	2	0-0	0-0	0-0	0-0-0	0	0	0	1	0	0
Jackson State					DNP						
Sam Houston					DNP						
Tulane					DNP						
Troy					DNP						
South Carolina	7	1-2	0-0	0-0	1-1-2	1	2	0	4	0	0
Arkansas	17	2-4	0-0	0-0	4-3-7	1	4	0	0	0	0
Kentucky	4	1-2	0-0	0-0	0-0-1	1	2	0	0	0	0
Missouri	22	1-2	0-0	0-0	0-5-5	3	2	1	0	0	0
Auburn	18	3-3	0-0	0-0	2-1-3	1	6	0	2	0	0
Tennessee	15	1-2	0-0	1-2	3-3-6	1	3	0	3	1	0

CAREER HIGHS (AT UA)

Points	13	Stetson (11/03/25)
Rebounds	7	Arkansas (01/04/25)
Assists	5	Harvard (11/24/25)
Steals	3	Stetson (11/03/25)
Blocks	2	2x, last Minnesota (11/26/25)
Minutes	23	Stetson (11/03/25)
Field Goals	5	Stetson (11/03/25)
FG Att.	6	Stetson (11/03/25)
3-Point FG		
3-Point Att.	1	Minnesota (11/26/25)
Free Throws	3	Stetson (11/03/25)
FT Att.	4	Stetson (11/03/25)

2025-26 SEASON HIGHS

Points	13	Stetson (11/03/25)
Rebounds	7	Arkansas (01/04/25)
Assists	5	Harvard (11/24/25)
Steals	3	Stetson (11/03/25)
Blocks	2	2x, last Minnesota (11/26/25)
Minutes	23	Stetson (11/03/25)
Field Goals	5	Stetson (11/03/25)
FG Att.	6	Stetson (11/03/25)
3-Point FG		
3-Point Att.	1	Minnesota (11/26/25)
Free Throws	3	Stetson (11/03/25)
FT Att.	4	Stetson (11/03/25)

MISCELLANEOUS STATS

CATEGORY	2024-25	CAREER (UA)
Games Started	29	56 (0)
Double-digit scoring	21	34 (1)
20+ point games	2	4 (0)
Double-digit rebounding	9	16 (0)
Double-doubles	5	11 (0)
Led UA in scoring		
Led UA in rebounding		
Led UA in assists		
Led UA in steals		
Led UA in blocks		

SEASON/CAREER STATS

Year	GP	GS	Min	Avg	FG	FGA	Pct	3FG	3FGA	Pct	FT	FTA	Pct	Off	Def	Tot	Avg	PF	A	TO	Blk	Stl	Pts	Avg
2023-24 CCU	33	27	812	24.6	104	236	.441	0	0	.000	102	153	.667	119	128	247	7.5	76	25	63	13	23	310	9.4
2024-25 CCU	32	29	802	25.1	155	272	.570	11	42	.262	74	119	.622	79	126	205	6.4	85	35	73	5	33	395	12.3
2025-26	14	0	179	12.8	25	37	.676	0	1	.000	8	11	.727	20	26	46	3.3	16	16	18	7	8	58	4.1
TOTALS	80	56	1793	22.6	285	547	.521	11	43	.256	185	285	.649	221	283	504	6.3	178	77	157	25	64	766	9.6

## LAST OUTING VS TENNESSEE



Official Basketball Box Score - Final

## Tennessee at Alabama

01/18/26 Coleman Coliseum, Tuscaloosa

2025-26 Women's Basketball

Game Time: 1:00 PM

Game Duration: 2:03

Attendance: 4,185

Officials: Melissa Barlow, Talisa Green, Meadow Overstreet

Tennessee - 70

Record: 13-3 (5-0)

NO.	Name		Min	FG	3P	FT	Rebounds			Fouls		TP	AS	TO	ST	Blocks		+/-
				M-A	M-A	M-A	OR	DR	TOT	PF	FD					BS	BA	
0	Janiah Barker	F	25:32	4-10	1-2	1-1	2	9	11	2	2	10	2	2	0	2	3	2
11	Zee Spearman	F	25:34	4-11	0-3	4-5	4	0	4	5	6	12	3	2	0	0	0	-6
13	Mia Pauldo	G	20:59	3-9	3-5	4-4	0	1	1	4	3	13	0	0	0	0	1	10
15	Jaida Civil	G	28:07	1-4	1-2	0-0	2	2	4	1	0	3	2	2	0	1	0	8
55	Talaysia Cooper	G	33:06	6-16	3-7	1-2	0	0	0	1	2	16	2	1	2	0	2	2
1	Nya Robertson		16:15	0-1	0-0	0-0	0	0	0	1	0	0	2	2	0	1	1	3
7	Lauren Hurst		07:06	0-0	0-0	0-0	0	0	0	0	0	0	1	1	0	0	0	6
12	Mya Pauldo		02:08	0-1	0-1	0-0	0	0	0	1	0	0	0	0	0	0	0	1
25	Deniya Prawl		14:32	1-1	0-0	2-2	0	6	6	2	2	4	1	0	0	0	0	9
33	Alyssa Latham		22:57	6-7	0-0	0-0	1	3	4	2	0	12	2	1	1	0	1	14
4	Kaniya Boyd		03:44	0-0	0-0	0-0	0	0	0	0	0	0	0	0	0	0	0	6
Team							3	2	5	0		0		1				
Totals				25-60	8-20	12-14	12	23	35	19	15	70	15	12	3	4	8	11

Major Fouls: Spearman (F1) 4<sup>th</sup> 5:36

Shooting By Period			
1 <sup>st</sup> FG%	6-18	33.3%	
3PT%	1-5	20.0%	
FT%	1-1	100%	
2 <sup>nd</sup> FG%	9-17	52.9%	
3PT%	3-8	37.5%	
FT%	0-0	0%	
3 <sup>rd</sup> FG%	6-13	46.2%	
3PT%	2-4	50.0%	
FT%	2-3	66.7%	
4 <sup>th</sup> FG%	4-12	33.3%	
3PT%	2-3	66.7%	
FT%	9-10	90%	
GM FG%	25-60	41.7%	
3PT%	8-20	40.0%	
FT%	12-14	85.7%	

Dead Ball Rebounds: 1, 0

Alabama - 59

Record: 17-3 (3-3)

			Team: Waco (5)															
NO.	Name		Min	FG	3P	FT	Rebounds			Fouls		TP	AS	TO	ST	Blocks		+/-
				M-A	M-A	M-A	OR	DR	TOT	PF	FD					BS	BA	
31	Naomi Jones	F	30:19	1-3	0-0	3-6	6	5	11	4	4	5	1	1	0	6	1	2
15	Ta'Mia Scott	G	28:28	1-7	0-4	0-0	0	3	3	3	0	2	2	2	1	2	0	-3
20	Diana Collins	G	32:41	4-9	1-4	0-0	1	4	5	3	4	9	2	3	1	0	0	-4
22	Karly Weathers	G	36:21	4-11	3-7	0-0	1	6	7	0	0	11	0	0	3	0	0	-8
23	Jessica Timmons	G	37:36	7-16	3-8	5-5	1	2	3	3	6	22	3	2	0	0	1	-9
32	Alancia Ramsey		15:26	1-2	0-0	1-2	3	3	6	1	4	3	0	3	1	0	0	-17
1	Ace Austin		11:10	2-7	1-3	0-0	0	1	1	1	0	5	0	1	1	0	2	-11
7	Waiata Jennings		06:28	1-4	0-2	0-0	1	0	1	0	1	2	1	0	0	0	0	-6
25	Joy Egbuna		01:32	0-0	0-0	0-0	0	0	0	0	0	0	0	0	0	0	0	1
Team							2	0	2	0		0		2				
Totals				21-59	8-28	9-13	15	24	39	15	19	59	9	14	8	8	4	-11

Major Fouls: Jones (F1) 4<sup>th</sup> 5:36

Shooting By Period			
1 <sup>st</sup> FG%	6-14	42.9%	
3PT%	3-8	37.5%	
FT%	2-4	50%	
2 <sup>nd</sup> FG%	5-15	33.3%	
3PT%	1-8	12.5%	
FT%	0-0	0%	
3 <sup>rd</sup> FG%	6-14	42.9%	
3PT%	3-6	50.0%	
FT%	3-3	100%	
4 <sup>th</sup> FG%	4-16	25.0%	
3PT%	1-6	16.7%	
FT%	4-6	66.7%	
GM FG%	21-59	35.6%	
3PT%	8-28	28.6%	
FT%	9-13	69.2%	

Dead Ball Rebounds: 4, 0

	UT	UA
Biggest lead	12 (4 <sup>th</sup> 0:35)	10 (1 <sup>st</sup> 4:32)
Best Scoring Run	9 (2 <sup>nd</sup> 5:45)	11 (1 <sup>st</sup> 4:32)
Lead Changes	7	
Times Tied	1	
Time with Lead	28:48	10:56

Points from	UT	UA
Turnovers	20	9
Paint	28	20
Second Chance	9	12
Fast Breaks	2	8
Bench	16	10

Period by Period Scoring					
	1st	2nd	3rd	4th	TOT
UT	14	21	16	19	70
UA	17	11	18	13	59

## 2025-26 SEASON COMBINED



# 2025-26 Alabama Women's Basketball Combined Team Statistics All games

Page 1/1  
as of Jan 18, 2026

## Game Records

Record	Overall	Home	Away	Neutral
ALL GAMES	17-3	14-1	1-2	2-0
CONFERENCE	3-3	2-1	1-2	0-0
NON-CONFERENCE	14-0	12-0	0-0	2-0

## Score by Periods

Team	1st	2nd	3rd	4th	OT	TOT
Alabama	369	328	381	357	0	1435
Opponents	273	270	280	261	0	1084

## Team Box Score

No.	Player				Total		3-Point		F-Throw		Rebounds													
		GP-GS	MIN	AVG	FG-FGA	FG%	3FG-3FGA	3FG%	FT-FTA	FT%	OFF	DEF	TOT	AVG	PF	DQ	A	TO	BLK	STL	PTS	AVG		
23	TIMMONS, Jessica	20-20	621:09	31.1	107-239	.448	40-106	.377	62-72	.861	16	72	88	4.4	43	1	55	36	1	17	316	15.8		
21	CODY, Essence	13-12	311:52	24.0	66-112	.589	8-20	.400	41-58	.707	23	43	66	5.1	31	0	7	18	21	20	181	13.9		
22	WEATHERS, Karly	20-20	649:01	32.5	72-163	.442	41-108	.380	14-21	.667	25	103	128	6.4	17	0	56	33	6	37	199	10.0		
20	COLLINS, Diana	20-20	591:30	29.6	64-140	.457	25-64	.391	23-30	.767	11	50	61	3.1	38	0	52	33	6	20	176	8.8		
15	SCOTT, Ta'Mia	20-20	492:03	24.6	65-149	.436	26-71	.366	7-13	.538	6	64	70	3.5	30	0	27	29	16	21	163	8.2		
1	AUSTIN, Ace	19-0	383:48	20.2	37-108	.343	14-47	.298	36-41	.878	14	40	54	2.8	42	0	38	25	2	15	124	6.5		
31	JONES, Naomi	20-8	335:07	16.8	40-89	.449	0-0	.000	27-48	.563	42	68	110	5.5	29	0	11	18	39	11	107	5.4		
32	RAMSEY, Alancia	15-0	195:37	13.0	26-39	.667	0-1	.000	9-13	.692	23	29	52	3.5	17	0	16	21	7	9	61	4.1		
4	LESTER, Eris	5-0	37:10	7.4	6-13	.462	0-2	.000	2-6	.333	2	6	8	1.6	3	0	2	6	1	3	14	2.8		
17	DA SILVA COSTA, Lourdes	17-0	135:28	8.0	15-46	.326	2-9	.222	9-12	.750	20	17	37	2.2	6	0	11	23	1	6	41	2.4		
7	JENNINGS, Waiata	13-0	97:38	7.5	11-31	.355	2-16	.125	2-3	.667	2	9	11	0.8	8	0	4	8	1	5	26	2.0		
5	DOUGLAS, Reychel	5-0	30:01	6.0	2-10	.200	1-4	.250	2-2	1.000	3	4	7	1.4	1	0	3	5	1	0	7	1.4		
24	BROOKS, Leah	10-0	57:37	5.8	5-11	.455	0-4	.000	0-0	.000	5	7	12	1.2	2	0	2	4	1	1	10	1.0		
25	EGBUNA, Joy	10-0	36:39	3.7	2-9	.222	0-0	.000	4-6	.667	3	2	5	0.5	9	0	0	4	2	1	8	0.8		
11	CHAMBERS, Tianna	6-0	25:20	4.2	1-4	.250	0-0	.000	0-2	.000	0	3	3	0.5	4	0	1	4	1	1	2	0.3		
Team											38	44	82				17							
Total		20	4000		519-1163	.446	159-452	.352	238-327	.728	233	561	794	39.7	280	1	285	284	106	167	1435	71.8		
Opponents		20	4000		404-1144	.353	104-341	.305	172-250	.688	208	445	653	32.7	346	12	207	305	67	134	1084	54.2		

## Team Statistics

	UA	OPP
<b>Scoring</b>	<b>1435</b>	<b>1084</b>
Points per game	71.8	54.2
Scoring margin	+17.6	-
<b>Field goals-att</b>	<b>519-1163</b>	<b>404-1144</b>
Field goal pct	.446	.353
<b>3 point fg-att</b>	<b>159-452</b>	<b>104-341</b>
3-point FG pct	.352	.305
3-pt FG made per game	8.0	5.2
<b>Free throws-att</b>	<b>238-327</b>	<b>172-250</b>
Free throw pct	.728	.688
F-Throws made per game	11.9	8.6
<b>Rebounds</b>	<b>794</b>	<b>653</b>
Rebounds per game	39.7	32.7
Rebounding margin	+7.1	-
<b>Assists</b>	<b>285</b>	<b>207</b>
Assists per game	14.3	10.4
<b>Turnovers</b>	<b>284</b>	<b>305</b>
Turnovers per game	14.2	15.3
Turnover margin	+1.1	-
Assist/turnover ratio	1.0	0.7
<b>Steals</b>	<b>167</b>	<b>134</b>
Steals per game	8.4	6.7
<b>Blocks</b>	<b>106</b>	<b>67</b>
Blocks per game	5.3	3.4
<b>Winning streak</b>	<b>0</b>	<b>-</b>
Home win streak	0	-
<b>Attendance</b>	<b>43533</b>	<b>20578</b>
Home games-Avg/Game	15-2902	3-6859
Neutral site-Avg/Game	-	2-282

## Team Results

Date	Opponent		Score	Att.
11/03/2025	Stetson	W	82-73	7226
11/06/2025	McNeese	W	64-44	2445
11/10/2025	Alcorn	W	92-39	2428
11/17/2025	Alabama A&M	W	66-43	2406
11/19/2025	Samford	W	84-45	2472
11/24/2025	vs Harvard	W	80-60	317
11/26/2025	vs Minnesota	W	63-58	247
12/01/2025	Kennesaw St.	W	79-65	2467
12/04/2025	Clemson	W	72-48	2525
12/07/2025	ULM	W	75-38	2524
12/14/2025	Jackson St.	W	62-51	2435
12/16/2025	Sam Houston	W	73-36	2224
12/17/2025	Tulane	W	81-52	2169
12/21/2025	Troy	W	77-59	2421
01/01/2026	at South Carolina	L	57-83	14367
01/04/2026	Arkansas	W	77-48	2695
01/08/2026	Kentucky	W	64-51	2911
01/12/2026	at Missouri	W	74-63	2747
01/15/2026	at Auburn	L	54-58	3464
01/18/2026	Tennessee	L	59-70	4185



2025-26 CONFERENCE COMBINED



2025-26 Alabama Women's Basketball  
Combined Team Statistics  
In Conference games

Game Records

Record	Overall	Home	Away	Neutral
ALL GAMES	3-3	2-1	1-2	0-0
CONFERENCE	3-3	2-1	1-2	0-0
NON-CONFERENCE	0-0	0-0	0-0	0-0

Score by Periods

Team	1st	2nd	3rd	4th	OT	TOT
Alabama	102	101	99	83	0	385
Opponents	90	97	93	93	0	373

Team Box Score

No.	Player				Total		3-Point		F-Throw		Rebounds												
		GP-GS	MIN	AVG	FG-FGA	FG%	3FG-3FGA	3FG%	FT-FTA	FT%	OFF	DEF	TOT	AVG	PF	DQ	A	TO	BLK	STL	PTS	AVG	
23	TIMMONS, Jessica	6-6	198:47	33.1	35-87	.402	12-43	.279	17-18	.944	3	24	27	4.5	16	1	13	13	0	4	99	16.5	
22	WEATHERS, Karly	6-6	206:07	34.4	26-56	.464	12-35	.343	4-7	.571	11	32	43	7.2	5	0	16	7	0	15	68	11.3	
20	COLLINS, Diana	6-6	183:08	30.5	23-54	.426	9-23	.391	1-1	1.000	4	13	17	2.8	13	0	12	11	1	5	56	9.3	
21	CODY, Essence	3-3	62:56	21.0	10-23	.435	1-4	.250	6-7	.857	4	4	8	2.7	6	0	3	7	3	5	27	9.0	
15	SCOTT, Ta'Mia	6-6	167:13	27.9	20-48	.417	7-19	.368	3-4	.750	3	21	24	4.0	15	0	7	7	5	11	50	8.3	
1	AUSTIN, Ace	6-0	104:02	17.3	9-30	.300	4-13	.308	7-9	.778	0	13	13	2.2	15	0	11	9	1	6	29	4.8	
31	JONES, Naomi	6-3	127:18	21.2	7-29	.241	0-0	.000	8-15	.533	16	17	33	5.5	11	0	5	5	21	0	22	3.7	
32	RAMSEY, Alancia	6-0	84:38	14.1	9-15	.600	0-0	.000	1-2	.500	10	14	24	4.0	8	0	1	9	0	1	19	3.2	
7	JENNINGS, Waiata	6-0	39:10	6.5	4-13	.308	2-8	.250	0-0	.000	1	3	4	0.7	1	0	2	1	0	0	10	1.7	
17	DA SILVA COSTA, Lourdes	3-0	16:47	5.6	2-11	.182	1-4	.250	0-0	.000	1	3	4	1.3	1	0	0	2	0	1	5	1.7	
24	BROOKS, Leah	1-0	01:58	2.0	0-0	.000	0-0	.000	0-0	.000	0	0	0	0.0	1	0	0	0	0	0	0	0.0	
11	CHAMBERS, Tianna	1-0	02:47	2.8	0-0	.000	0-0	.000	0-0	.000	0	0	0	0.0	0	0	0	0	0	0	0	0.0	
25	EGBUNA, Joy	2-0	05:09	2.6	0-1	.000	0-0	.000	0-0	.000	0	1	1	0.5	0	0	0	0	0	1	0	0.0	
Team											15	7	22					6					
Total		6	1200		145-367	.395	48-149	.322	47-63	.746	68	152	220	36.7	92	1	70	77	31	49	385	64.2	
Opponents		6	1200		135-343	.394	38-111	.342	65-88	.739	64	162	226	37.7	88	3	68	86	27	37	373	62.2	

Team Statistics

	UA	OPP
Scoring	385	373
Points per game	64.2	62.2
Scoring margin	+2.0	-
Field goals-att	145-367	135-343
Field goal pct	.395	.394
3 point fg-att	48-149	38-111
3-point FG pct	.322	.342
3-pt FG made per game	8.0	6.3
Free throws-att	47-63	65-88
Free throw pct	.746	.739
F-Throws made per game	7.8	10.8
Rebounds	220	226
Rebounds per game	36.7	37.7
Rebounding margin	-1.0	-
Assists	70	68
Assists per game	11.7	11.3
Turnovers	77	86
Turnovers per game	12.8	14.3
Turnover margin	+1.5	-
Assist/turnover ratio	0.9	0.8
Steals	49	37
Steals per game	8.2	6.2
Blocks	31	27
Blocks per game	5.2	4.5
Winning streak	0	-
Home win streak	0	-
Attendance	9791	20578
Home games-Avg/Game	3-3264	3-6859
Neutral site-Avg/Game	-	0-0

Team Results

Date	Opponent		Score	Att.
01/01/2026	at South Carolina	L	57-83	14367
01/04/2026	Arkansas	W	77-48	2695
01/08/2026	Kentucky	W	64-51	2911
01/12/2026	at Missouri	W	74-63	2747
01/15/2026	at Auburn	L	54-58	3464
01/18/2026	Tennessee	L	59-70	4185



## 2025-26 BOX SCORES

## GAME 5: ALABAMA VS. SAMFORD

Official Basketball Box Score - Final  
Samford at Alabama  
11/19/25 Coleman Coliseum, Tuscaloosa  
2025-26 Women's Basketball

Game Time: 6:00 PM  
Game Duration: 1:50  
Attendance: 2,472

Officials: Melissa Barlow, Teresa Stuck, Ashlee Goode

Samford - 45

Record: 2-3

NO. Name	Min	FG M-A	3P M-A	FT M-A	Rebounds OR DR TOT	Fouls PF FD	TP	AS	TO	ST	Blocks BS BA	+/-
10 Aubrey Blankenship	F 10:10	0-1	0-1	0-0	0 2 2	1 1	0	0	1	0	0 0	-23
44 Emily Bowman	G 14:44	0-3	0-0	0 2 2	4 0 1	0 1	0	1	1	0	0 0	-35
5 Frances Morris	G 11:53	2-4	0-0	0 1 1	3 1 4	0 2	1	0	0	0	0 0	-3
11 Briana Rivera	G 29:06	3-9	3-9	0 0 1	1 1 0	9 0	1	1	1	0	0 0	-18
22 Sierra Godbolt	G 25:33	3-9	1-3	6-6	0 0 0	5 13	3	3	0	0	0 0	-17
3 Kaylee Yarbrough	23:50	2-11	1-6	0-0	1 1 1	1 1	5	0	1	1	0 0	-36
20 Alyssa Tarpley	23:12	0-1	0-1	0-0	0 1 1	1 0	0	1	0	1	0 0	-28
12 Carla Baguda	21:52	1-2	0-0	1-2	2 5 7	2 1	3	0	0	0	3 1	-4
1 Jada Knight	14:27	1-4	0-1	0-0	0 1 1	0 0	2	2	3	0	0 3	-22
2 Avary Brewer	13:20	1-4	1-2	0-0	0 2 2	3 0	3	1	2	1	0 0	-23
21 Sydney Martin	06:38	2-3	2-3	0-0	0 2 2	4 0	6	0	0	0	0 0	-12
33 Marisha Bishop	01:33	0-0	0-0	0-0	0 0 0	1 0	0	0	0	0	0 0	-2
4 Camryn Register	01:51	0-0	0-0	0-0	0 0 0	0 0	0	0	0	0	0 0	2
32 Yael Maayan	01:51	0-0	0-0	0-0	0 0 0	0 0	0	0	0	0	1 0	2
Team					2 1 3	0	0	0	3			
Totals		15-51	8-27	7-8	6 19 25	17 10	45	8	17	5	4 5	-39

Major Fouls: NONE

Shooting By Period	1st	2nd	3rd	4th	GM
FG%	5-12 41.7%	3-11 27.3%	5-13 38.5%	2-13 15.4%	15-51 29.4%
3PT%	1-6 16.7%	2-10 20.0%	3-7 42.9%	3-13 23.1%	9-33 27.3%
FT%	2-2 100%	1-2 50%	6-6 100%	1-2 50%	10-10 100%
GM FG%	15-51 29.4%	3-11 27.3%	5-13 38.5%	2-13 15.4%	15-51 29.4%
3PT%	1-6 16.7%	2-10 20.0%	3-7 42.9%	3-13 23.1%	9-33 27.3%
FT%	2-2 100%	1-2 50%	6-6 100%	1-2 50%	10-10 100%

Dead Ball Rebounds: 2, 0

## GAME 6: ALABAMA VS. HARVARD (BAHA MAR)

Official Basketball Box Score - Final  
Harvard at Alabama  
11/24/25 Baha Mar Convention Center, Nassau  
2025-26 Women's Basketball

Game Time: 6:30 PM  
Game Duration: 2:00  
Attendance: 317

Officials: Troy Winders, Natasha Harris, Alicia Iwakiri

Harvard - 60

Record: 0-1

NO. Name	Min	FG M-A	3P M-A	FT M-A	Rebounds OR DR TOT	Fouls PF FD	TP	AS	TO	ST	Blocks BS BA	+/-
31 Katie Krupa	F 26:35	5-7	1-2	5-6	0 2 2	4 5	16	4	3	0	2 0	-15
40 Abigail Wright	F 30:20	7-15	0-0	2-3	3 0 3	1 6	18	3	6	1	1 1	-16
5 Gabby Anderson	G 29:22	0-5	0-3	0-0	0 1 1	1 1	0	0	1	2	0 0	-6
22 Saniyah Glenn	G 28:23	4-13	1-3	2-3	4 6 10	5 3	11	7	3	2	0 1	-19
23 Nina Emnace	G 31:06	1-6	0-2	2-2	0 1 1	3 3	14	0	2	1	0 1	-23
11 Alayna Rocco	21:01	4-7	3-5	0-0	0 2 2	0 2	11	0	1	2	0 0	-15
0 Olivia Jones	13:36	0-1	0-0	0-0	1 1 2	4 0	0	2	2	1	0 0	-5
1 Aubrey Shaw	08:41	0-0	0-0	0-0	1 0 1	0 0	0	0	0	0	0 0	2
5 Lydia Chaitra	05:43	0-0	0-0	0-0	0 0 0	2 0	0	0	2	0	0 0	3
24 Mary Hollensteiner	05:43	1-5	0-3	0-0	2 0 2	0 0	2	0	0	0	0 0	-6
Team					2 0 2	0	0	0	0			
Totals		22-59	5-18	11-14	13 13 26	20 18	60	16	20	9	3 3	-20

Major Fouls: NONE

Shooting By Period	1st	2nd	3rd	4th	GM
FG%	4-12 33.3%	3-13 23.1%	6-6 100%	7-15 46.7%	22-59 37.3%
3PT%	1-3 33.3%	6-6 100%	5-5 100%	2-5 40.0%	14-19 73.7%
FT%	5-5 100%	3-4 75%	2-6 33.3%	2-5 40.0%	12-20 60.0%
GM FG%	4-12 33.3%	3-13 23.1%	6-6 100%	7-15 46.7%	22-59 37.3%
3PT%	1-3 33.3%	6-6 100%	5-5 100%	2-5 40.0%	14-19 73.7%
FT%	5-5 100%	3-4 75%	2-6 33.3%	2-5 40.0%	12-20 60.0%

Dead Ball Rebounds: 3, 2

Alabama - 84

Record: 5-0

NO. Name	Min	FG M-A	3P M-A	FT M-A	Rebounds OR DR TOT	Fouls PF FD	TP	AS	TO	ST	Blocks BS BA	+/-
21 Essence Cody	F 26:02	4-6	0-2	2-2	2 3 5	1 1	10	0	1	3	2 0	26
15 Ta'Mia Scott	G 24:56	4-6	2-3	0-0	0 4 4	0 2	10	3	3	1	0 1	34
20 Diana Collins	G 24:50	0-5	0-2	2-2	0 3 3	1 1	2	3	0	0	2 0	32
22 Karly Weathers	G 30:59	5-8	3-5	0-0	0 3 3	6 1	2	13	4	2	1 0	36
23 Jessica Timmons	G 20:37	3-5	3-4	3-6	0 3 3	3 4	12	3	0	0	0 0	31
32 Alancia Ramsey	11:10	3-4	0-0	0-0	2 3 5	1 0	6	2	1	0	0 1	7
1 Ace Austin	29:24	4-8	1-2	0 2 2	2 3 21	5 1	3	0	0	0	0 0	26
31 Naomi Jones	11:10	3-4	0-0	1-2	4 6 1	1 1	7	0	0	0	0 0	8
17 Lourdes Da Silva Costa	08:43	0-3	0-0	0-0	3 0 3	0 2	0	0	2	0	1 2	-4
5 Reyche Douglas	05:51	0-0	0-0	0-0	0 0 0	0 0	0	1	1	0	0 0	-2
24 Leah Brooks	04:51	1-2	0-0	0-0	0 0 0	0 0	2	0	0	0	0 0	3
25 Joy Egbuna	01:27	0-2	0-0	1-2	1 0 1	0 1	1	0	0	0	0 0	-2
Team					0 4 4	0	0	0	0			
Totals		31-59	12-24	10-16	13 29 42	10 17	84	21	11	8	5 4	39

Major Fouls: NONE

Shooting By Period	1st	2nd	3rd	4th	GM
FG%	5-11 45.5%	3-4 75%	1-5 20.0%	1-2 50%	10-22 45.5%
3PT%	2-4 50.0%	0-2 0%	0-0 0%	0-0 0%	2-6 33.3%
FT%	2-2 100%	0-0 0%	0-0 0%	0-0 0%	2-2 100%
GM FG%	10-22 45.5%	3-4 75%	1-5 20.0%	1-2 50%	10-22 45.5%
3PT%	2-4 50.0%	0-2 0%	0-0 0%	0-0 0%	2-6 33.3%
FT%	2-2 100%	0-0 0%	0-0 0%	0-0 0%	2-2 100%

Dead Ball Rebounds: 2, 0

	SAM	UA
Biggest lead	1 (1 <sup>st</sup> 2:55)	41 (4 <sup>th</sup> 1:59)
Best Scoring Run	6 (2 <sup>nd</sup> 2:35)	17 (2 <sup>nd</sup> 6:10)
Lead Changes	4	
Times Tied	1	
Time with Lead	02:45	36:27

Points from	SAM	UA
Turnovers	13	24
Paint	12	34
Second Chance	3	15
Fast Breaks	7	16
Bench	19	37

Period by Period Scoring	1st	2nd	3rd	4th	TOT
SAM	13	14	7	11	45
UA	12	20	32	20	84

## GAME 7: ALABAMA AT MINNESOTA (BAHA MAR)

Official Basketball Box Score - Final  
Alabama at Minnesota  
11/26/25 Baha Mar Convention Center, Nassau  
2025-26 Women's Basketball

Game Time: 4:00 PM  
Game Duration: 1:56  
Attendance: 247

Officials: Kalei Enterline, Kim Hobbs, Natasha Harris

Alabama - 63

Record: 1-0

NO. Name	Min	FG M-A	3P M-A	FT M-A	Rebounds OR DR TOT	Fouls PF FD	TP	AS	TO	ST	Blocks BS BA	+/-
21 Essence Cody	F 29:41	7-11	0-2	4-5	0 6 6	3 4	18	1	1	1	0 0	9
15 Ta'Mia Scott	G 21:35	3-8	2-5	0-0	0 5 5	1 2	8	2	1	0	1 0	-5
20 Diana Collins	G 30:55	2-6	2-3	0-0	1 2 3	1 0	6	3	2	1	0 0	-6
22 Karly Weathers	G 35:47	4-10	3-6	0-0	1 6 7	1 3	11	4	5	1	2 0	11
23 Jessica Timmons	G 34:19	6-14	4-7	2-2	1 1 2	2 2	18	3	0	0	0 1	-3
1 Ace Austin	20:36	0-5	0-2	0-0	1 2 3	3 0	0	2	0	0	0 1	15
31 Naomi Jones	12:16	0-2	0-0	0-0	4 2 6	1 0	0	0	2	0	0 0	-1
32 Alancia Ramsey	13:04	0-1	0-1	2-2	1 5 6	0 1	2	1	2	0	2 0	8
17 Lourdes Da Silva Costa	01:47	0-0	0-0	0-0	0 0 0	0 0	0	0	0	0	0 0	-3
Team					2 2 4	0	0	0	3			
Totals		22-57	11-26	8-9	11 31 42	12 12	63	16	16	4	5 3	5

Major Fouls: NONE

Shooting By Period	1st	2nd	3rd	4th	GM
FG%	6-15 40.0%	3-9 33.3%	4-12 33.3%	1-3 33.3%	14-39 35.9%
3PT%	2-9 22.2%	2-10 20.0%	4-12 33.3%	1-3 33.3%	9-34 26.5%
FT%	4-5 80.0%	4-5 80.0%	0-0 0%	0-0 0%	8-10 80.0%
GM FG%	14-39 35.9%	3-9 33.3%	4-12 33.3%	1-3 33.3%	14-39 35.9%
3PT%	2-9 22.2%	2-10 20.0%	4-12 33.3%	1-3 33.3%	9-34 26.5%
FT%	4-5 80.0%	4-5 80.0%	0-0 0%	0-0 0%	8-10 80.0%

Dead Ball Rebounds: 4, 1

Minnesota - 58

Record: 0-1

NO. Name	Min	FG M-A	3P M-A	FT M-A	Rebounds OR DR TOT	Fouls PF FD	TP	AS	TO	ST	Blocks BS BA	+/-
25 Grace Grocholski	F 36:29	7-14	3-5	1-1	2 4 6	0 4	18	1	1	0	1 3	-4
52 Sophie Hart	G 34:23	3-9	0-0	2-4	7 4 11	2 2	8	0	2	1	1 1	-3
3 Amaya Bettle	G 32:17	3-13	0-2	1-1	1 6 7	4 2	7	3	2	0	0 0	-1
10 Mara Braun	G 36:59	4-11	1-4	0-0	0 2 2	0 0	9	1	2	2	1 0	8
12 Brylee Glenn	G 36:12	5-15	1-2	2-3	1 2 3	4 3	13	4	0	0	0 1	-4
31 Finaiu Tonga	04:26	0-0	0-0	0-0	1 1 0	0 0	0	0	0	0	0 0	1
22 Kennedy Klick	03:13	0-1	0-0	0-0	0 0 0	0 0	0	0	0	0	0 0	-3
35 Makenna Christian	14:50	1-4	1-4	0-0	0 1 1	0 1	3	0	0	0	0 0	0
41 Niamya Holloway	01:11	0-0	0-0	0-0	0 0 0	0 0	0	0	0	0	0 0	-3
Team					2 1 3	0	0	0	1			
Totals		23-67	6-17	6-9	13 21 34	12 12	58	9	8	3	3 5	-5

Major Fouls: NONE

Shooting By Period	1st	2nd	3rd	4th	GM
FG%	4-14 28.6%	0-0 0%	3-9 33.3%	6-17 35.3%	13-40 32.5%
3PT%	0-0 0%	0-0 0%	3-9 33.3%	1-3 33.3%	4-12 33.3%
FT%	1-1 100%	2-4 50%	0-0 0%	0-0 0%	3-5 60.0%
GM FG%	13-40 32.5%	0-0 0%	3-9 33.3%	6-17 35.3%	13-40 32.5%
3PT%	0-0 0%	0-0 0%	3-9 33.3%	1-3 33.3%	4-12 33.3%
FT%	1-1 100%	2-4 50%	0-0 0%	0-0 0%	3-5 60.0%

Dead Ball Rebounds: 2, 0

	ALA	MIN
Biggest lead	13 (2 <sup>nd</sup> 7:04)	1 (1 <sup>st</sup> 7:02)
Best Scoring Run	8 (1 <sup>st</sup> 0:36)	6 (3 <sup>rd</sup> 8:24)
Lead Changes	6	
Times Tied	3	
Time with Lead	35:34	02:19

Points from	ALA	MIN
Turnovers	12	8
Paint	20	32
Second Chance	2	7
Fast Breaks	3	8
Bench	2	3

Period by Period Scoring					
	1st	2nd	3rd	4th	TOT
ALA	16	11	17	19	63
MIN	8	9	26	15	58

## 2025-26 BOX SCORES

## GAME 9: ALABAMA VS. CLEMSON



Official Basketball Box Score - Final  
**Clemson at Alabama**  
12/04/25 Coleman Coliseum, Tuscaloosa  
2025-26 Women's Basketball

Game Time: 6:00 PM  
Game Duration: 1:44  
Attendance: 2,525

Officials: Brenda Pantaja, Maggie Tieman, Brandon Enterline

Clemson - 48			Record: 5-4																					
NO.	Name	Min	FG	M-A	3P	M-A	FT	M-A	Rebounds	OR	DR	TOT	Fouls	TP	AS	TO	ST	Blocks	+/-	Shooting By Period				
																				1st	FG%	3P%	23.1%	
25	Demeara Hinds	F 21:14	1-5	0-0	0-0	0	0	0	1	1	2	1	2	2	2	1	0	0	-13	3PT%	0-3	0.0	0.0%	
32	Raven Thompson	F 22:15	3-3	1-1	0-0	0	0	4	4	2	2	0	7	1	2	0	0	0	-13	FT%	3-3	100.0		
5	Hannah Kohn	G 34:38	3-10	3-8	1-1	1	2	3	2	2	2	10	1	3	0	1	1	-24	2nd FG%	4-13	30.8	30.8%		
11	Rusne Augustinate	G 21:30	2-5	2-4	0-0	0	1	1	1	2	0	6	0	2	1	0	0	-11	3PT%	3-10	30.0	30.0%		
12	Mia Moore	G 24:12	0-7	0-1	0-0	0	5	5	0	1	0	0	3	1	0	0	0	-16	FT%	0-0	0.0			
14	Rachael Rose	13:29	1-4	0-2	3-3	0	1	1	2	2	5	0	1	0	0	0	0	-15	3rd FG%	5-14	35.7	35.7%		
21	Hadley Periman	21:38	2-6	0-3	0-0	3	5	8	1	1	4	3	0	0	0	1	0	-12	3PT%	2-5	40.0	40.0%		
10	Taylor Johnson-Matthews	10:51	2-7	0-2	1-2	0	1	1	2	1	5	0	1	1	0	1	0	-5	FT%	2-2	100	100%		
0	Holland Harris	11:26	1-1	0-0	1-2	2	3	5	1	2	3	0	0	1	0	3	0	-3	4th FG%	5-14	35.7	35.7%		
1	Amalia Jackson	13:51	2-4	0-1	2-2	0	0	0	1	1	6	0	0	0	0	0	0	-4	3PT%	1-5	20.0	20.0%		
31	Morgan Lee	04:56	0-2	0-1	0-0	0	1	1	1	0	0	0	0	0	0	0	1	0	-4	FT%	3-5	60	60%	
Team									2	1	3	0	0	0	0					GM FG%	17-54	31.5	31.5%	
Totals				17:54	6-23	8-10	8	25	33	16	11	48	10	13	3	6	3	-24		3PT%	6-23	26.1	26.1%	
			Major Fouls: NONE																			Dead Ball Rebounds: 2, 0		

Alabama - 72			Record: 9-0																							
NO.	Name	Min	FG	M-A	3P	FT	Rebounds	Fouls	TP	AS	TO	ST	Blocks	+/-	Shooting By Period											
							OR	DR	TOT				BS	BA		1st	2nd	3rd	4th							
21	Essence Cody	F 29:04	7-11	2-4	5-9	1	4	5	3	7	21	2	1	1	1	0	7	3PT%	1-7	14.3%						
15	Ta'Mia Scott	G 28:00	4-13	1-5	0-0	0	4	4	0	1	9	2	1	0	0	1	20	FT%	2-3	66.7%						
20	Diana Collins	G 26:20	3-4	0-0	2-3	1	1	2	2	2	8	2	0	0	0	0	19	2nd FG%	5-11	45.5%						
22	Karly Weathers	G 33:20	4-7	1-2	0-0	0	5	5	0	2	9	2	1	1	0	2	23	3PT%	2-4	50.0%						
23	Jessica Timmons	G 31:06	7-15	3-6	2-2	1	2	3	1	3	19	4	1	1	0	1	20	FT%	2-2	100%						
31	Naomi Jones	10:09	0-2	0-0	0-0	1	6	7	0	0	0	0	1	0	2	0	17	3rd FG%	10-13	76.9%						
1	Ace Austin	22:09	0-3	0-1	2-2	1	3	4	2	1	2	2	1	0	0	1	8	3PT%	2-3	66.7%						
7	Waiaata Jennings	06:24	2-2	0-0	0-0	0	0	0	1	0	4	0	0	1	0	0	2	FT%	4-6	66.7%						
32	Alancia Ramsey	07:33	0-0	0-0	0-0	0	1	1	1	0	0	1	0	1	0	0	4	4th FG%	6-16	37.5%						
17	Loures Da Silva Costa	03:23	0-0	0-0	0-0	0	0	0	0	0	0	0	0	0	0	0	-1	3PT%	2-4	50.0%						
4	Eris Lester	02:31	0-1	0-0	0-0	0	0	0	1	0	0	0	0	0	0	1	1	FT%	3-5	60%						
Team						5	3	8	0	0	0	0	0	0	0	0	1		GM FG%	27-58	46.6%					
Totals			27:58	7-18	11-16	10	29	39	11	16	72	15	6	5	3	6	24		3PT%	7-18	38.9%					
			Major Fouls: NONE																							

	Cle	ALA	Period by Period Scoring						
Biggest lead	1 (2 <sup>nd</sup> 4:39)	26 (4 <sup>th</sup> 0:22)	Turnovers	0	18				
Best Scoring Run	6 (2 <sup>nd</sup> 4:39)	16 (3 <sup>rd</sup> 2:51)	Paint	18	34				
Lead Changes	2		Second Chance	9	7				
Times Tied	2		Fast Breaks	10	12				
Time with Lead	01:04	37:40	Bench	23	6				
	Cle	ALA	1st	2nd	3rd	4th	TOT		
	9	11	14	14	48				
	ALA	15	14	26	17	72			

## GAME 10: ALABAMA VS. ULM



Official Basketball Box Score - Final  
**ULM at Alabama**  
12/07/25 Coleman Coliseum, Tuscaloosa  
2025-26 Women's Basketball

Game Time: 4:00 PM  
Game Duration: 1:48  
Attendance: 2,524

Officials: Travis Jones, Kaz Beverly, Tiffany Bird

ULM - 38		Record: 5-3																			
NO.	Name	Min	FG	3P	FT	Rebounds	Fouls	TP	AS	TO	ST	Blocks	+/-	Shooting By Period							
			M-A	M-A	M-A	OR	DR	T	PF	FD		BS		BA	1st	2nd	3rd				
35	Asia Barclay	F 29:04	2-6	0-1	1-1	0	2	2	1	4	5	0	2	5	2	0	-23	1st	FG%	5-9	55.6%
25	Marcavia Shavers	C 25:53	4-7	0-0	0-0	1	5	6	5	1	8	0	2	1	0	0	-27	3PT%	0-2	0.0%	
0	Jasmine Jackson	G 22:06	1-9	0-4	0-0	0	1	1	1	1	2	0	1	0	0	2	-19	FT%	0-0	0%	
9	Kamille Brown	G 20:31	0-2	0-1	0-0	0	1	0	1	0	0	0	1	1	1	0	-13	2nd	FG%	4-11	36.4%
24	Asjah Inniss	G 25:32	3-5	0-1	3-4	0	2	2	2	2	9	1	6	2	0	0	-18	3PT%	0-0	0.0%	
7	J'Mani Ingram	28:16	5-11	0-0	1-1	0	1	1	3	2	11	0	2	0	0	1	-35	FT%	1-2	50%	
2	Marissa Gasaway	22:26	1-4	0-0	1-2	1	3	0	1	3	0	2	1	0	0	0	-22	3rd	FG%	4-15	26.7%
3	Nailea Nicholas	06:05	0-0	0-0	0-0	0	0	0	0	0	0	1	1	0	0	0	-4	4th	FG%	3-14	21.4%
44	Nakiyah Mays-Prince	14:13	0-4	0-2	0-0	1	1	2	1	0	0	0	4	1	0	0	-15	3PT%	0-2	0.0%	
13	Abby Leahy	02:12	0-0	0-0	0-0	0	0	0	0	0	0	0	0	0	0	0	-6	FT%	4-5	80%	
15	Katelyn Chomko	03:42	0-1	0-1	0-0	0	0	0	1	0	0	0	0	0	0	0	-3	GM FG%	16-49	32.7%	
Team						2	4	6	0	0	0	0	0					3PT%	0-10	0.0%	
Totals		16:49	0-10	6-8	7	17	24	14	11	38	3	21	11	2	5	-37		FT%	6-8	75.0%	
Major Fouls: NONE																					

Alabama - 75			Record: 10-0																	
NO.	Name	Min	FG	3P	FT	Rebounds	Fouls	TP	AS	TO	ST	Blocks	+/-	Shooting By Period						
			M-A	M-A	M-A	OR	DR	TOT	PF	FD		BS	BA	1st	2nd	3rd	FT%			
31	Naomi Jones	F 21:03	5-6	0-0	1-2	1	6	7	2	5	11	1	2	2	1	0	35	3PT% 4-10 40.0%		
15	Ta'Mia Scott	G 19:44	5-8	1-4	0-0	1	3	4	1	1	11	0	0	0	1	0	22	FT% 0-1 0%		
20	Diana Collins	G 22:37	0-4	0-3	0-0	0	0	0	1	1	0	4	0	3	1	1	29	3PT% 11-18 61.1%		
22	Karly Weathers	G 29:11	4-9	3-8	0-0	3	3	0	0	0	11	4	1	2	1	0	36	3PT% 0-5 0.0%		
23	Jessica Timmons	G 24:04	7-8	3-4	0-0	1	1	2	0	2	17	1	2	1	0	0	21	FT% 1-1 100%		
25	Joy Egbona	05:20	0-0	0-0	2-2	0	0	0	1	1	2	0	1	0	0	0	-2	3rd FT% 7-13 53.8%		
1	Ace Austin	17:49	1-3	0-2	0-0	0	1	1	1	2	2	2	0	0	0	0	11	3PT% 2-7 28.6%		
32	Alancia Ramsey	02:10	0-0	0-0	0-0	0	0	0	0	0	0	1	0	0	0	0	-1	FT% 0-0 0%		
7	Wailea Jennings	19:22	4-7	0-2	1-1	0	2	2	2	2	9	0	2	4	1	0	16	4th FT% 6-13 46.2%		
17	Lourdes Da Silva Costa	14:08	3-7	0-0	0-0	2	1	3	1	0	6	1	2	0	0	1	6	3PT% 1-2 50.0%		
4	Eis Lester	09:12	2-3	0-0	0-0	2	1	3	1	0	4	1	2	1	0	0	14	FT% 3-3 100%		
24	Leah Brooks	06:32	1-2	0-1	0-0	1	2	3	0	0	2	0	0	0	0	0	-2	GM FG% 32-58 55.2%		
5	Reychel Douglas	04:24	0-1	0-0	0-0	0	1	1	0	0	0	2	0	0	0	0	0	3rd FT% 7-24 29.2%		
11	Tanna Chambers	04:24	0-0	0-0	0-0	0	1	1	1	0	0	0	0	0	0	0	0	FT% 4-5 80.0%		



## 2025-26 BOX SCORES

## GAME 13: ALABAMA VS. TULANE



Official Basketball Box Score - Final  
**Tulane at Alabama**  
 12/17/25 Coleman Coliseum, Tuscaloosa  
 2025-26 Women's Basketball

Game Time: 4:00 PM  
 Game Duration: 1:46  
 Attendance: 2,169

Officials: Fabou Stephens, Frank Sleratore, Bill Larence

Tulane - 52 Record: 4-6

NO. Name	Min	FG M-A	3P M-A	FT M-A	Rebounds OR DR TOT	Fouls PF FD	TP	AS	TO	ST	Blocks BS BA	+/-
22 Dylann Hanna	F 31:08	4-8	0-0	0-0	5 4 9	1 0	4	1	0	0	4 2	-28
23 Amira Mabry	F 32:06	4-7	2-5	0-0	3 3 6	2 1	10	2	2	0	0 0	-18
3 CC Mays	G 32:46	5-15	2-7	0-2	0 3 3	1 1	12	3	4	0	0 0	-23
9 Kendall Sneed	G 27:13	2-9	1-2	2-2	0 4 4	2 2	7	4	4	0	0 0	-22
21 Kanija Daniel	G 11:45	0-2	0-0	0-0	1 1 1	1 0	0	0	0	0	1 1	-17
8 Mecalin Marshall	26:39	4-9	2-6	0-0	1 2 3	4 0	10	0	0	2 2	0 0	-18
24 Shiloh Kimpson	12:47	0-6	0-1	2-4	0 0 0	0 2	2	3	2	1 0	0 0	-7
11 Jaydia Brown	19:52	3-9	0-3	1-2	1 1 2	3 1	7	1	1	0 0	0 0	-10
0 Jordyn Weaver	02:52	0-0	0-0	0-0	0 0 0	0 0	0	0	0	0 0	0 0	-2
32 Madison Gordon	02:52	0-0	0-0	0-0	0 2 2	1 0	0	0	0	0 0	0 0	0
Team					5 2 7	0	0	0	1			
Totals		20-61	7-24	5-10	15 22 37	15 7	52	14	16	3	5 5	-29

Major Fouls: NONE

Shooting By Period		
1 <sup>st</sup> FG%	6-16	37.5%
3PT%	3-6	50.0%
FT%	0-0	0%
2 <sup>nd</sup> FG%	3-12	25.0%
3PT%	0-3	0.0%
FT%	2-4	50%
3 <sup>rd</sup> FG%	7-19	36.8%
3PT%	2-8	25.0%
FT%	1-4	25%
4 <sup>th</sup> FG%	4-14	28.6%
3PT%	2-7	28.6%
FT%	2-2	100%
GM FG%	20-61	32.8%
3PT%	7-24	29.2%
FT%	5-10	50.0%

Dead Ball Rebounds: 3, 0

Alabama - 81 Record: 13-0

NO. Name	Min	FG M-A	3P M-A	FT M-A	Rebounds OR DR TOT	Fouls PF FD	TP	AS	TO	ST	Blocks BS BA	+/-
31 Naomi Jones	F 27:05	4-8	0-0	3-4	4 6 10	1 5	11	1	2	1	3 2	7
15 Ta'Mia Scott	G 24:26	2-7	1-4	2-2	0 2 2	1 1	7	4	1	1	1 0	19
20 Diana Collins	G 30:47	6-10	4-7	1-2	3 2 5	1 1	17	7	0	0	0 0	33
22 Karly Weathers	G 30:27	3-10	2-8	2-2	2 3 5	0 1	10	1	1	2	0 0	24
23 Jessica Timmons	G 30:34	6-11	4-8	2-2	0 4 4	1 4	18	5	2	3	0 0	32
17 Lourdes Da Silva Costa	11:33	1-3	0-0	2-2	4 2 6	0 1	4	0	1	1	0 0	21
1 Ace Austin	23:00	3-7	2-4	0-0	1 3 4	3 0	8	1	1	0	0 0	12
24 Leah Brooks	12:55	2-3	0-0	0-0	0 1 1	0 0	4	1	2	0	1 1	-1
25 Joy Egbuna	01:22	0-1	0-0	0-0	0 0 0	0 0	0	0	0	0	0 0	1
7 Waiaata Jennings	03:07	0-0	0-0	0-0	0 0 0	0 0	0	0	0	0	0 0	-5
5 Reyche Douglas	02:52	0-2	0-2	2-2	1 1 2	0 1	2	0	2	0	0 0	0
11 Tianna Chambers	01:53	0-0	0-0	0-2	0 1 1	0 1	0	0	0	0	0 0	2
Team					0 3 3	0	0	0	1			
Totals		27-62	13-33	14-18	15 28 43	7 15	81	20	13	8	5 5	29

Major Fouls: NONE

Shooting By Period		
1 <sup>st</sup> FG%	7-15	46.7%
3PT%	3-9	33.3%
FT%	5-6	83.3%
2 <sup>nd</sup> FG%	7-16	43.8%
3PT%	3-8	37.5%
FT%	0-0	0%
3 <sup>rd</sup> FG%	8-15	53.3%
3PT%	4-8	50.0%
FT%	1-2	50%
4 <sup>th</sup> FG%	5-16	31.3%
3PT%	3-8	37.5%
FT%	8-10	80%
GM FG%	27-62	43.5%
3PT%	13-33	39.4%
FT%	14-18	77.8%

Dead Ball Rebounds: 2, 0

	TUL	UA
Biggest lead	3 (1 <sup>st</sup> 9:27)	32 (4 <sup>th</sup> 5:00)
Best Scoring Run	5 (3 <sup>rd</sup> 2:46)	13 (3 <sup>rd</sup> 8:17)
Lead Changes	1	2
Times Tied	2	0
Time with Lead	00:30	37:11

Points from	TUL	UA
Turnovers	13	25
Paint	18	22
Second Chance	16	19
Fast Breaks	7	7
Bench	19	18

Period by Period Scoring	1st	2nd	3rd	4th	TOT
TUL	15	8	17	12	52
UA	22	17	21	21	81

## GAME 14: ALABAMA VS. TROY



Official Basketball Box Score - Final  
**Troy at Alabama**  
 12/17/25 Coleman Coliseum, Tuscaloosa  
 2025-26 Women's Basketball

Game Time: 2:00 PM  
 Game Duration: 1:51  
 Attendance: 2,421

Officials: Katie Lukanich, Maj Forsberg, Deanna Jackson

Troy - 59 Record: 10-2

NO. Name	Min	FG M-A	3P M-A	FT M-A	Rebounds OR DR TOT	Fouls PF FD	TP	AS	TO	ST	Blocks BS BA	+/-
5 Zay Dyer	F 33:51	2-11	0-3	1-4	8 4 12	1 2	5	0	1	1	0 0	-9
12 Fortuna Ngnawo	F 29:04	6-15	2-5	1-2	1 10 11	4 2	15	1	3	0	1 0	-6
1 Saniya Jackson	G 15:37	2-8	0-2	0-0	1 1 2	2 0	4	2	2	0	0 0	3
3 Emami Jenkins	G 20:59	1-6	1-3	0-0	1 1 2	1 2	3	0	1	0	0 0	-19
22 Rachel Leggett	G 28:34	3-5	0-1	0-2	2 2 4	1 1	6	3	1	2	0 0	-7
2 Ashley Baez	23:17	2-6	0-3	4-6	0 4 4	3 5	8	1	1	2	0 0	-11
6 Shakirah Edwards	18:56	3-6	1-2	0-0	1 3 4	2 2	7	2	1	1	0 0	-17
35 Lellani Gulon	21:25	4-11	1-4	0-1	1 1 2	1 1	9	1	1	2	0 0	-12
0 Detavia Salter	08:18	1-2	0-1	0-0	1 0 1	0 0	2	0	2	0	0 0	-12
Team					1 1 2	0	0	0	0			
Totals		24-70	5-24	6-15	17 27 44	15 15	59	10	13	8	1 2	-18

Major Fouls: NONE

Shooting By Period		
1 <sup>st</sup> FG%	7-16	43.8%
3PT%	3-9	33.3%
FT%	3-4	75%
2 <sup>nd</sup> FG%	7-20	35.0%
3PT%	0-3	0.0%
FT%	0-1	0%
3 <sup>rd</sup> FG%	5-19	26.3%
3PT%	2-8	25.0%
FT%	1-4	25%
4 <sup>th</sup> FG%	5-15	33.3%
3PT%	0-4	0.0%
FT%	2-6	33.3%
GM FG%	24-70	34.3%
3PT%	5-24	20.8%
FT%	6-15	40.0%

Dead Ball Rebounds: 5, 0

Alabama - 77 Record: 14-0

NO. Name	Min	FG M-A	3P M-A	FT M-A	Rebounds OR DR TOT	Fouls PF FD	TP	AS	TO	ST	Blocks BS BA	+/-
31 Naomi Jones	F 16:15	2-5	0-0	0-0	3 0 3	3 0	4	1	1	1	0 0	-1
15 Ta'Mia Scott	G 28:55	4-9	1-5	0-1	0 1 1	2 2	9	0	3	0	1 0	10
20 Diana Collins	G 35:07	3-11	1-4	3-4	0 8 8	2 2	10	4	0	2	0 0	18
22 Karly Weathers	G 38:24	6-13	3-7	0-2	2 7 9	0 1	15	3	2	1	1 0	16
23 Jessica Timmons	G 37:47	8-15	2-5	5-6	2 10 12	2 8	23	4	1	0	0 0	16
21 Essence Cody	22:16	7-9	1-2	1-2	2 3 5	3 2	16	0	4	2	0 0	22
1 Ace Austin	15:19	0-2	0-1	0-0	0 0 0	0 0	3	0	3	0	0 0	8
17 Lourdes Da Silva Costa	03:05	0-2	0-1	0-0	0 0 0	0 0	0	0	0	0	0 0	-1
7 Waiaata Jennings	00:44	0-0	0-0	0-0	0 0 0	0 0	0	0	0	0	0 0	2
24 Leah Brooks	02:08	0-0	0-0	0-0	0 0 0	0 0	0	0	0	0	0 0	0
Team					2 4 6	0	0	1				
Totals		30-66	8-25	9-15	11 33 44	15 15	77	15	12	6	2 1	18

Major Fouls: NONE

Shooting By Period		
1 <sup>st</sup> FG%	10-22	45.5%
3PT%	1-8	12.5%
FT%	2-4	50%
2 <sup>nd</sup> FG%	4-15	26.7%
3PT%	1-5	20.0%
FT%	0-0	0%
3 <sup>rd</sup> FG%	8-15	53.3%
3PT%	3-6	50.0%
FT%	2-4	50%
4 <sup>th</sup> FG%	8-14	57.1%
3PT%	3-6	50.0%
FT%	5-7	71.4%
GM FG%	30-66	45.5%
3PT%	8-25	32.0%
FT%	9-15	60.0%

Dead Ball Rebounds: 4, 0

	Tro	Ala
Biggest lead	4 (1 <sup>st</sup> 5:55)	21 (4 <sup>th</sup> 1:42)
Best Scoring Run	8 (2 <sup>nd</sup> 0:43)	9 (4 <sup>th</sup> 1:42)
Lead Changes	11	0
Times Tied	3	0
Time with Lead	08:23	29:17

Points from	Tro	Ala
Turnovers	8	12
Paint	34	38
Second Chance	21	14
Fast Breaks	10	3
Bench	26	16

Period by Period Scoring	1st	2nd	3rd	4th	TOT
Tro	20	14	13	12	59
Ala	23	9	21	24	77

## GAME 15: ALABAMA AT SOUTH CAROLINA



Official Basketball Box Score - Final  
**Alabama at South Carolina**  
 01/01/26 Colonial Life Arena, Columbia  
 2025-26 Women's Basketball

Game Time: 2:00 PM  
 Game Duration: 1:43  
 Attendance: 14,367

Officials: Pualani Spurlock, Felicia Grinter, Kevin Faly

Alabama - 57 Record: 14-1 (0-1)

NO. Name	Min	FG M-A	3P M-A	FT M-A	Rebounds OR DR TOT	Fouls PF FD	TP	AS	TO	ST	Blocks BS BA	+/-
21 Essence Cody	F 26:38	3-7	0-1	0-0	1 1 2	2 3	6	3	1	0	3 1	-27
15 Ta'Mia Scott	G 24:14	2-9	1-5	0-0	0 2 2	1 0	5	1	1	2	1 0	-12
20 Diana Collins	G 23:07	7-13	3-4	0-0	1 0 1	2 0	17	1	5	0	1 2	-21
22 Karly Weathers	G 31:42	3-7	2-6	1-2	1 3 4	0 1	9	2	1	1	0 0	-15
23 Jessica Timmons	G 31:15	4-10	2-8	2-2	0 3 3	1 6	12	1	0	0	0 0	-29
31 Naomi Jones	19:00	0-2	0-0	0-0	1 4 5	3 1	0	2	0	0	4 0	0
1 Ace Austin	25:38	2-6	1-4	1-2	0 3 3	3 1	6	3	1	0	1 0	-12
32 Alancia Ramsey	07:35	1-2	0-0	0-0	1 1 2	1 0	2	0	4	0	0 0	-14
7 Waiaata Jennings	01:36	0-0	0-0	0-0	0 0 0	0 0	0	0	0	0	0 0	3
17 Lourdes Da Silva Costa	07:17	0-4	0-1	0-0	0 3 3	0 0	0	0	1	0	0 0	0
24 Leah Brooks	01:58	0-0	0-0	0-0	0 0 0	0 0	0	0	0	0	0 0	-3
Team					2 2 4	0	0	2				
Totals		22-60	9-29	4-6	7 22 29	14 12	57	13	16	3	10 4	-26


Major Fouls: NONE

Shooting By Period		
1 <sup>st</sup> FG%	6-17	35.3%
3PT%	3-11	27.3%



2025-26 BOX SCORES

GAME 17: ALABAMA VS. NO. 6 KENTUCKY



Official Basketball Box Score - Final

Kentucky at Alabama

01/08/26 Coleman Coliseum, Tuscaloosa

2025-26 Women's Basketball

Game Time: 6:00 PM

Game Duration: 1:53

Attendance: 2,911

Officials: Joseph Vaszily, Fatou Cesako-Stephans, Meadow Overstreet

Kentucky - 51

Record: 15-2 (2-1)

NO. Name	Min	FG M-A	3P M-A	FT M-A	Rebounds OR DR TOT	Fouls PF FD	TP	AS	TO	ST	Blocks BS BA	+/-
0 Jordan Obi	F 26:01	3-5 1-1	0-2	2 2 4	2 2 2	7 1 3	1	0	1	0	1	0
32 Amelia Hassett	F 37:22	3-9 3-8	0-0	1 5 6	3 1 4	9 0 4	2	2	0	-1	1	7
13 Clara Strack	C 31:57	1-13 0-4	2-5	3 10 13	3 4 4	2 3 2	3	1	-1	-1	7	8
5 Tonie Morgan	G 35:39	4-13 0-2	6-7	2 7 9	4 8 14	5 5 1	1	1	-1	-1	15	13
8 Asia Boone	G 30:09	4-9 2-5	2-2	1 0 1	5 3 12	1 2 0	0	1	0	0	-1	18
4 Lexi Blue	L 11:10	0-0 0-0	0-0	0 0 0	1 0 0	1 2 1	0	0	0	0	-9	9
20 Kaelyn Carroll	19:19	2-4 1-2	0-0	1 1 2	0 0 5	0 0 0	0	0	0	0	-5	5
33 Josie Gilvin	08:23	0-1 0-0	0-0	0 0 0	1 0 0	0 0 0	1	0	0	0	0	10
Team					2 1 3	0	0	0	0			
Totals	17:54	7-22	10-16	12	26 38	19 18	51	10	20	7	6 4	-13


Major Fouls: NONE

Shooting By Period

1 <sup>st</sup> FG%	5-12	41.7%
3PT%	3-7	42.9%
FT%	3-6	50%
2 <sup>nd</sup> FG%	5-12	41.7%
3PT%	3-6	50.0%
FT%	0-0	0%
3 <sup>rd</sup> FG%	3-16	18.8%
3PT%	0-4	0.0%
FT%	3-5	60%
4 <sup>th</sup> FG%	4-14	28.6%
3PT%	1-5	20.0%
FT%	4-5	80%
GM FG%	17-54	31.5%
3PT%	7-22	31.8%
FT%	10-16	62.5%

Dead Ball Rebounds: 4, 0

GAME 18: ALABAMA AT MISSOURI



Official Basketball Box Score - Final

Alabama at Missouri

01/12/26 Mizzou Arena, Columbia

2025-26 Women's Basketball

Game Time: 6:00 PM

Game Duration: 1:51

Attendance: 2,747

Officials: Natasha Carry, Jeff Woolen, Sarah Williams

Alabama - 74

Record: 17-1 (3-1)

NO. Name	Min	FG		3P	FT	Rebounds		Fouls		TP	AS	TO	ST	Blocks		+/-
		M-A	M-A	M-A	M-A	OR	DR	PF	FD					BS	BA	
31 Naomi Jones	F 18:17	2-10	0-0	0-0	2-2	2	1	3	0	1	6	1	2	0	4	-4
15 Ta'Mia Scott	F 38:33	6-14	2-4	1-2	2	5	7	3	2	15	1	0	5	1	0	7
20 Diana Collins	G 26:41	2-4	0-0	0-0	0-0	0	4	1	0	1	0	1	0	0	8	8
22 Karly Weathers	G 39:38	9-13	2-5	3-3	0	7	7	2	3	23	3	0	1	0	0	13
23 Jessica Timmons	G 30:28	6-16	2-7	2-2	1	6	7	3	4	16	3	1	0	0	2	7
32 Alancia Ramsey	22:27	1-2	0-0	0-0	0	5	5	3	2	2	1	0	0	0	0	16
1 Ace Austin	19:31	2-3	0-0	4-4	0	0	0	3	1	8	1	0	0	0	0	11
7 Waiata Jennings	01:45	0-1	0-1	0-0	0	0	0	0	0	0	0	0	0	0	0	-2
17 Lourdes Da Silva Costa	02:41	0-3	0-0	0-0	0	1	0	1	0	0	0	0	0	0	0	-5
Team						3	0	3	0	0	0	0				
Totals		28:66	6-17	12-13	9	27	36	19	13	74	11	3	8	5	4	11

Major Fouls: NONE

Shooting By Period

1 <sup>st</sup> FG%	7-13	53.8%
3PT%	1-4	25.0%
FT%	7-8	87.5%
2 <sup>nd</sup> FG%	5-21	23.8%
3PT%	0-3	0.0%
FT%	0-0	0%
3 <sup>rd</sup> FG%	8-15	53.3%
3PT%	3-6	50.0%
FT%	2-2	100%
4 <sup>th</sup> FG%	8-17	47.1%
3PT%	2-4	50.0%
FT%	3-3	100%
GM FG%	28-66	42.4%
3PT%	6-17	35.3%
FT%	12-13	92.3%

Dead Ball Rebounds: 0, 0

Alabama - 64		Record: 16-1 (2-1)												
NO. Name	Min	FG M-A	3P M-A	FT M-A	Rebounds OR DR TOT	Fouls PF FD	TP	AS	TO	ST	Blocks BS BA	+/-		
21 Essence Cody	F 14:43	2-6	0-0	2-3	1 1 2	3 4	6	0	3	2	0	2	10	
15 Ta'Mia Scott	G 23:50	0-3	0-0	0-0	0 3 3	2 1	0	2	1	0	1	0	-1	
20 Diana Collins	G 37:22	6-16	3-9	1-1	0 4 4	1 5	16	2	1	1	0	2	12	
22 Karly Weathers	G 37:53	3-6	1-4	0-0	3 5 8	1 1	7	2	3	7	0	0	13	
23 Jessica Timmons	G 38:35	8-16	2-7	6-7	0 4 4	3 5	24	2	4	1	0	0	17	
31 Naomi Jones	22:32	2-6	0-0	1-3	5 3 8	3 2	5	0	0	0	3	0	2	
1 Ace Austin	16:11	1-4	1-2	1-1	0 3 3	4 0	4	5	3	1	0	2	17	
7 Waiata Jennings	04:02	0-1	0-1	0-0	0 0 0	0 1 0	0	0	0	0	0	0	-5	
32 Alancia Ramsey	04:52	1-2	0-0	0-0	0 1 1	1 0	2	0	0	0	0	0	0	
Team					4 3 7	0	0	0	0					
Totals	23:60	7-23	11-15	13-27	40 18	19 64	13	15	12	4	6	13		
Major Fouls: NONE														
Shooting By Period														
1 <sup>st</sup> FG%	6-16	37.5%												
3PT%	1-4	25.0%												
FT%	2-2	100%												
2 <sup>nd</sup> FG%	8-17	47.1%												
3PT%	2-6	33.3%												
FT%	3-4	75%												
3 <sup>rd</sup> FG%	7-16	43.8%												
3PT%	3-7	42.9%												
FT%	2-3	66.7%												
4 <sup>th</sup> FG%	2-11	18.2%												
3PT%	1-6	16.7%												
FT%	4-6	66.7%												
GM FG%	23-60	38.3%												
3PT%	7-23	30.4%												
FT%	11-15	73.3%												
Dead Ball Rebounds: 2, 0														

Missouri - 63		Record: 12-7 (0-4)																				
NO.	Name	Min	FG			3P			FT			Rebounds		Fouls		TP	AS	TO	ST	Blocks		+/-
			M-A	M-A	M-A	M-A	M-A	M-A	M-A	OR	DR	OT	PF	FD	BS					BA		
10	Jordana Reisma	F	18:44	2-6	1-2	3-4	3	4	7	4	4	8	2	2	0	0	1	-6	1st FG%	5-17	29.4%	
0	Grace Slaughter	G	40:00	10-18	1-1	2-3	2	7	9	0	23	0	2	1	1	1	-11	3PT%	1-5	20.0%		
1	Shannon Dowell	G	32:55	3-13	0-3	4-4	1	4	5	2	6	10	4	2	0	1	-15	FT%	0-1	0%		
22	Abbie Sotell	G	30:22	0-5	0-3	0-0	2	2	4	2	1	0	2	1	1	1	-2	2nd FG%	7-16	43.8%		
23	Chloe Schreckae	G	40:20	4-7	4-7	0-0	0	3	3	1	3	12	0	1	0	0	6	3PT%	2-4	50.0%		
4	Liisa Thompson	G	10:33	2-3	2-2	1-2	0	0	0	0	1	7	0	3	0	0	-13	FT%	2-2	100%		
12	Maria Thyron	G	13:00	0-1	0-0	0-0	0	4	4	1	0	1	0	1	0	0	7	3rd FG%	7-13	53.8%		
11	Jayla Smith	G	16:26	1-4	1-3	0-0	0	1	1	1	0	3	0	0	0	1	-23	3PT%	5-8	62.5%		
2	Saniah Tyler	G	06:19	0-1	0-0	0-0	0	1	1	0	0	0	1	0	0	0	0	FT%	1-2	50%		
55	Reka Toman	G	01:21	0-0	0-0	0-0	0	1	1	0	0	0	0	0	0	0	2	4th FG%	3-12	25.0%		
Team																		3PT%	1-4	25.0%		
Totals																		FT%	7-8	87.5%		
																		GM FG%	22-58	37.9%		
																		3PT%	9-21	42.9%		
																		FT%	10-13	76.9%		
																		Major Fouls: Bench (TF) 1 <sup>st</sup> 1:17		Dead Ball Rebounds: 1		

## 2025-26 RADIO &amp; TELEVISION CHART



**ACE AUSTIN**  
GUARD Fr. • 5-7  
Spring Garden, Ala.  
Spring Garden HS



**ERIS LESTER**  
GUARD So. • 5-11  
Jacksonville, Fla.  
Montverde Academy



**REYCHEL DOUGLAS**  
GUARD R-So. • 6-0  
Raleigh, N.C.  
Mildbrook Magnet HS



**WAIATA JENNINGS**  
GUARD Sr. • 5-9  
Rotorua, New Zealand  
Baylor



**TIANNA CHAMBERS**  
GUARD Fr. • 6-1  
Aurora, Colo.  
Cherry Creek HS



**TA'MIA SCOTT**  
GUARD Sr. • 6-0  
Clarksville, Tenn.  
Middle Tennessee



**LOURDES DA SILVA COSTA**  
FORWARD Fr. • 6-3  
Stockholm, Sweden  
Montverde Academy



**DIANA COLLINS**  
GUARD Jr. • 5-9  
Lilburn, Ga.  
Ohio State



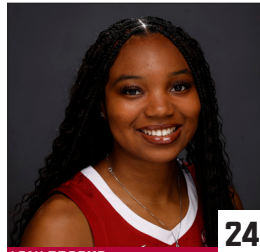
**ESSENCE CODY**  
FORWARD Jr. • 6-4  
Valdosta, Ga.  
Valdosta HS



**KARLY WEATHERS**  
GUARD Sr. • 5-11  
Loretto, Tenn.  
Loretto HS



**JESSICA TIMMONS**  
GUARD R-Sr. • 5-8  
Charlotte, N.C.  
NC State



**LEAH BROOKS**  
GUARD So. • 6-3  
Hazel Green, Ala.  
Hazel Green HS



**JOY EGBUNA**  
FORWARD Fr. • 6-3  
Arlington, Texas  
Faith Family Academy



**NAOMI JONES**  
FORWARD R-So. • 6-4  
Jackson, Ala.  
Jackson HS



**ALANCIA RAMSEY**  
FORWARD Jr. • 6-0  
Delray Beach, Fla.  
Coastal Carolina



**KRISTY CURRY**  
HEAD COACH  
13th Season



**BROOKS DONALD WILLIAMS**  
ASSISTANT COACH/RECRUITING COORD.  
1st Season (Second Tenure); 4th Overall



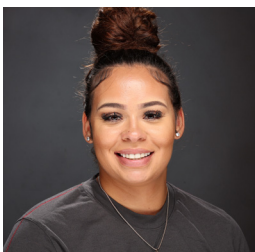
**KELLY CURRY**  
ASSISTANT COACH  
13th Season



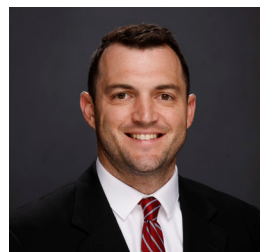
**TENNILLE ADAMS**  
ASSISTANT COACH  
3rd Season



**SYDNEY-ANNE COTTRELL**  
ASSISTANT COACH (3RD SEASON)  
3rd Season



**CHELSEA DUNGEE-ARTBERRY**  
ASSISTANT COACH  
1st Season



**BRIAN JOHNSON**  
DIRECTOR, OPERATIONS/NIL PARTNERSHIPS  
1st Season (Second Tenure); 8th Overall



**ALISHA GRISBY**  
ATHLETIC TRAINER  
4th Season



**KEVIN MARKLE**  
STRENGTH & CONDITIONING COACH  
2nd Season