



BASKETBALL

ULM ATHLETIC MEDIA RELATIONS • 308 WARHAWK WAY • MALONE STADIUM • MONROE, LA. 71209
OFFICE PHONE: (318) 342-5378 • WEBSITE: ULMWARHAWKS.COM • TWITTER: @ULMWARHAWKS • YOUTUBE: ULM ATHLETICS

2025-26 SCHEDULE/RESULTS

November (4-1)

3	Eastern Michigan	W 80-71
7	Louisiana Tech	W 70-62
11	Grambling	W 74-55
16	Arkansas-Pine Bluff	W 79-50
20	at Sam Houston	L 57-34
23	Lamar	W 62-47
25	at Clemson	Postponed
30	at Mississippi State	2 p.m.

December (0-0)

7	at Alabama	4 p.m.
11	at Indiana	6 p.m.
17	at Arkansas State*	7 p.m.
20	at Texas State*	Noon

January (0-0)

1	South Alabama*	1:30 p.m.
3	Arkansas State*	Noon
8	at Ragin' Cajuns*	5 p.m.
10	at South Alabama*	2 p.m.
14	Troy*	6:30 p.m.
17	Ragin' Cajuns*	Noon
22	James Madison*	6:30 p.m.
24	Marshall*	2 p.m.
28	at Old Dominion*	5:30 p.m.
31	at App State*	Noon

February (0-0)

4	Georgia State*	6:30 p.m.
7	MAC/SBC Challenge	TBA
12	at Southern Miss*	5 p.m.
14	at Troy*	1 p.m.
21	at Georgia Southern*	12 p.m.
25	Texas State*	6:30 p.m.
27	Southern Miss*	6:30 p.m.

March (0-0)

3-9 Sun Belt Conference Tournament \$

BOLD - Home game

* - Sun Belt Conference game Rankings - AP

\$ - Sun Belt Conference Tournament; Pensacola, Fla.

MEDIA COVERAGE

TV
SEC Network+

RADIO
KMLB 105.7 FM | kmlb.com
Josh McGehee

ULM ATHLETIC MEDIA RELATIONS

Contact..... Emma Grace ReVelle
Cell Phone..... 318-342-5378
E-mail..... revelle@ulm.edu
Website..... ulmwarhawks.com
Instagram..... @ULM_WBB/@ULM_Warhawks
Twitter..... @ULMwbb/@ULMWarhawks
Facebook..... Facebook.com/ULMWBB
YouTube..... ULM Athletics

GAME 7

Sunday, Nov. 30 • 2 p.m. CT • Starkville, Miss. • Humphrey Coliseum

ULM WARHAWKS (5-1)



Head Coach: Scotty Fletcher

Record at ULM: 4-1 (First season)

Overall Record: Same

MISSISSIPPI STATE BULLDOGS (6-1)



Head Coach: Sam Purcell

Record at Mississippi State: 73-36 (Fourth season)

Overall Record: Same

TIP-OFF

The ULM women's basketball team (5-1) hit the road for a five-game road trip to close out the calendar year, beginning with Mississippi State (5-1) on Sunday (Nov. 30). Tip-off in Starkville is scheduled for 2 p.m. The Warhawks are coming off another win at home over Lamar and look for their first road win.

FOLLOW THE WARHAWKS –

Sunday's game will be available on KMLB 105.7 FM with Josh McGehee on the call. Streaming will be available for games on SECN+. Links to live stats for all games, when available, can be found at ULMWarhawks.com. Navigate to the women's basketball schedule page and select that day's opponent.

SCOUTING THE BULLDOGS –

Mississippi State enters Sunday's game on a two-game winning streak as they look to improve to 5-0 at home. Most recently, the Bulldogs went 2-0 in the Emerald Coast Classic, defeating Alcorn State and Middle Tennessee. Freshman **Madison Francis** leads the team in scoring, averaging 12.6 points per game. Francis also leads the team with 3.3 blocks per game, placing herself first in the SEC and third nationally. Junior **Favour Nwaedozi** has collected three double-doubles on the season so far, already ranking 17th in the NCAA. Nwaedozi also averages 10 boards per game this season to place fifth in the SEC.

ULM vs. P4 –

The last time ULM beat a Power Four opponent was Jan. 28, 1991, when they beat the Oklahoma Sooners, 79-76 in Monroe. The last time the Warhawks took on a Power Four opponent was last season, when ULM hosted Mississippi State in Monroe and fell by a small margin, 78-70.

LEADING THE WAY –

ULM feature a balanced scoring attack as three different players average at least 8.5 points per game. **J'Mani Ingram** leads the team averaging 10.5 points per game, followed by **Marcavia Shavers** (9.0) and **Asjah Inniss** (8.5). **Marcavia Shavers** averages 6.3 rebounds per game to lead the team while **Nakiyah Mays-Prince** has posted a team-best average of 4.7 assists per game. Thanks in large part to her career-high five steal performance vs. Grambling State, **Kamille Brown** leads the team in steals with 12 while Nichols claims the team lead in blocks with three.

PROJECTED STARTING LINEUP

No.	Pos.	Name	Ht.	Yr.	PPG	RPG	APG	Notes
0	G	Jazmine Jackson	5-8	R-Jr.	8.3	3.0	0.3	Scored a career-high 25 points with five triples vs. Lamar
7	G	J'Mani Ingram	5-7	Gr.	10.5	4.5	1.5	Leads team in scoring with a season high of 16 points vs. Grambling
24	G	Asjah Inniss	5-9	Gr.	8.5	3.5	2.7	Scored a season high 12 points vs. La. Tech, went 6-6 from the line
25	C	Marcavia Shavers	6-2	Gr.	9.0	6.3	0.3	Season high of 12 points and nine rebounds vs. Lamar
35	F	Asia Barclay	6-0	Gr.	4.2	3.3	0.7	Opened the season with eight points, four rebounds vs. EMU

RESERVES

No.	Pos.	Name	Ht.	Yr.	PPG	RPG	APG	Notes
2	F	Marissa Gasaway	5-11	Gr.	2.5	3.2	0.7	Posted a season high seven points and five rebounds vs. UAPB
3	F	Naila Nicholas	6-0	Gr.	2.0	1.3	0.3	Tied her season high of six points with two three-pointers vs. UAPB
9	G	Kamille Brown	5-8	Jr.	3.8	2.7	0.8	Established a career high of 16 points in the win vs. La. Tech
11	F	Keshunti Nichols	6-0	Gr.	8.3	5.0	0.7	Scored 12 points, posted a career-high four steals vs. La. Tech
44	G	Nakiyah Mays-Prince	5-5	Sr.	7.0	2.5	4.7	Dished out a season-high seven assists vs. La. Tech

ULM QUICK FACTS

University Information

Name of School: ULM
City/State: Monroe, La.
Population: 46,535
Founded: 1931
Enrollment: 8,277
Nickname: Warhawks
Colors: Maroon and Gold
Arena: Fant-Ewing Coliseum (7,000)
Affiliation: NCAA I
Conference: Sun Belt
President: Dr. Carrie Castille
Interim Athletic Director: Bryant Vincent
Senior Woman's Administrator: Carmen Wright
Athletic Dept. Phone: 318-342-5360
Ticket Office Phone: 318-342-4295
Website: ULMWarhawks.com

Home Court Information

Facility Fant-Ewing Coliseum
Capacity 7,000
Opened 1971
Playing Surface Maple
All-Time Record 375-270 (.581)

Women's Basketball History

First Season 1974-75
Total Seasons 51
All-Time Record 716-775 (.480)
All-Time Conference Record 354-365 (.492)
..... Southland (25 seasons)
..... 259-127 (.671)
..... Sun Belt (18 seasons)
..... 99-238 (.294)
Winning Seasons 23
..... Last: 2023-24 (21-14)
20-Plus Win Seasons 8
..... Last: 2023-24 (21-14)
Regular Season Conference Championships 5
(1983, 1984, 1985, 1987, 2005)
Conference Tournament Titles 1
(1983)
NCAA Tournament Appearances 4 (5-4 record)
(1983, 1984, 1985, 1987)
WNIT Appearances 2 (2-3 record)
..... Last: Troy (4/1/24 - L, 75-89)

2024-25 Season Recap

Overall Record 11-19
Home: 7-6 Away: 3-11 Neutral: 1-2
SBC Record: 7-11 Home: 5-4 Away: 2-7
Starters (R/L) 0/5
Letterwinners (R/L) 0/13
Newcomers (HS/TR) 0/14

Women's Basketball Coaching Staff

Head Coach Scotty Fletcher
..... Alma Mater: William Carey, 2007
..... Record at ULM: 5-1 (First season)
..... Career Record: 5-1 (First season)
Associate Head Coach Mendy McNeese
Assistant Coach Elyssa Coleman
Assistant Coach Nikolas Quezada
Director of Basketball Operations Elise Johnson
Director of Player Development Mikayla Etienne

ULM NUMERICAL ROSTER

No.	Name	Pos.	Ht.	Class	Hometown (Previous School)
0	Jazmine Jackson	G	5-8	R-Jr.	Jacksonville, Fla. (Pearl River CC)
1	Vanessa Schwarzmann	G	5-9	Gr.	Upper Marlboro, Md. (Elizabeth City State University)
2	Marissa Gasaway	F	5-11	Gr.	Louisville, Ky. (Winthrop)
3	Nailea Nicholas	F	6-0	Gr.	St. Thomas, U.S. Virgin Islands (San Jose State)
7	J'Mani Ingram	G	5-7	Gr.	North Augusta, S.C. (App State)
9	Kamille Brown	G	5-8	Jr.	Conway, Ark. (Three Rivers CC)
11	Keshunti Nichols	F	6-0	Gr.	Pearl, Miss. (Charleston Southern)
13	Abby Leahy	G	6-1	Jr.	Colorado Springs, Colo. (Northeast JC)
15	Katelyn Chomko	G	5-7	Sr.	Houston, Texas (Robert Morris)
20	Roge'Ne' Hillard	C	6-3	Jr.	Hazlehurst, Miss. (Pearl River CC)
24	Asjah Inniss	G	5-9	Gr.	Suwanee, Ga. (App State)
25	Marcavia Shavers	C	6-2	Gr.	Biloxi, Miss. (Saint Louis)
35	Asia Barclay	F	6-0	Gr.	Anniston, Ala. (Jacksonville State)
44	Nakiyah Mays-Prince	G	5-5	Sr.	Chicago, Ill. (Georgia Southern)

Head Coach: Scotty Fletcher (William Carey, 2007) – First season

Associate Head Coach: Mendy McNeese (Queens, 2018) – First season

Assistant Coach: Mikayla Etienne (Mississippi Valley State, 2023) – First season

Assistant Coach: Elyssa Coleman (UTSA, 2023) – First season

Assistant Coach: Nikolas Quezada (Miami University, 2018) – First season

Director of Operations: Elise Johnson (Mississippi State, 2025) – First season

ULM ALPHABETICAL ROSTER

No.	Name	Pos.	Ht.	Class	Hometown (Previous School)
35	Asia Barclay	F	6-0	Gr.	Anniston, Ala. (Jacksonville State)
9	Kamille Brown	G	5-8	Jr.	Conway, Ark. (Three Rivers CC)
15	Katelyn Chomko	G	5-7	Sr.	Houston, Texas (Robert Morris)
2	Marissa Gasaway	F	5-11	Gr.	Louisville, Ky. (Winthrop)
20	Roge'Ne' Hillard	C	6-3	Jr.	Hazlehurst, Miss. (Pearl River CC)
7	J'Mani Ingram	G	5-7	Gr.	North Augusta, S.C. (App State)
24	Asjah Inniss	G	5-9	Gr.	Suwanee, Ga. (App State)
0	Jazmine Jackson	G	5-8	R-Jr.	Jacksonville, Fla. (Pearl River CC)
13	Abby Leahy	G	6-1	Jr.	Colorado Springs, Colo. (Northeast JC)
44	Nakiyah Mays-Prince	G	5-5	Sr.	Chicago, Ill. (Georgia Southern)
3	Nailea Nicholas	F	6-0	Gr.	St. Thomas, U.S. Virgin Islands (San Jose State)
11	Keshunti Nichols	F	6-0	Gr.	Pearl, Miss. (Charleston Southern)
1	Vanessa Schwarzmann	G	5-9	Gr.	Upper Marlboro, Md. (Elizabeth City State University)
25	Marcavia Shavers	C	6-2	Gr.	Biloxi, Miss. (Saint Louis)

BY CLASS

Graduate Students (8) Asia Barclay
..... Marissa Gasaway
..... J'Mani Ingram
..... Asjah Inniss
..... Nailea Nicholas
..... Keshunti Nichols
..... Vanessa Schwarzmann
..... Marcavia Shavers
Seniors (2) Katelyn Chomko
..... Nakiyah Mays-Prince
Juniors (4) Kamille Brown
..... Roge'Ne' Hillard
..... Jazmine Jackson
..... Abby Leahy

BY POSITION

Guards (8) Kamille Brown
..... Katelyn Chomko
..... J'Mani Ingram
..... Asjah Inniss
..... Jazmine Jackson
..... Abby Leahy
..... Nakiyah Mays-Prince
..... Vanessa Schwarzmann
Forwards (4) Asia Barclay
..... Marissa Gasaway
..... Nailea Nicholas
..... Keshunti Nichols
Centers (2) Roge'Ne' Hillard
..... Marcavia Shavers

BY STATE/COUNTRY

Alabama (1) Asia Barclay
Arkansas (1) Kamille Brown
Colorado (1) Abby Leahy
Georgia (1) Asjah Inniss
Florida (1) Jazmine Jackson
Illinois (1) Nakiyah Mays-Prince
Kentucky (1) Marissa Gasaway
Maryland (1) Vanessa Schwarzmann
Mississippi (3) Roge'Ne' Hillard
..... Keshunti Nichols
..... Marcavia Shavers
South Carolina (1) J'Mani Ingram
Texas (1) Katelyn Chomko
U.S. Virgin Islands (1) Nailea Nicholas

PRONUNCIATION GUIDE

Roge'Ne' Hillard - ROG-ih-nay
J'Mani Ingram - Juh-mah-knee
Asjah Inniss - Asia
Abby Leahy - Lay-hee
Nailea Nicholas - Ny-lay-uh
Nakiyah Mays-Prince - Nuh-KY-uh
Keshunti Nichols - Kee-SHUN-tee
Marcavia Shavers - Mar-CAVE-ee-uh

SUNDAY'S MATCHUP: ULM (5-1) at Mississippi State (5-1)

SERIES HISTORY –

ULM and Mississippi State are set to meet for the 10th time in the series, dating back to 1993. The Bulldogs currently lead by a wide margin of 8-1, a seven-game win streak dating back to 1995. The last time the Warhawks faced Mississippi State in Starkville was 2022, a 94-39 victory for the host team. The lone win for ULM came in 1994 in Monroe, finding victory in a 81-64 score. Most recently, Mississippi State pulled out a win by the closest margin of the series, a 78-70 score in Monroe in 2024.

LAST TIME OUT

MONROE, La. – The ULM women's basketball team claimed a fifth victory at Fant-Ewing Coliseum over the Lamar Cardinals on Saturday afternoon, 62-47. **Jazmine Jackson** led the team in a show-stopping game, posting 25 points and five triples. The game opened gritty and defense-heavy, but it was the Warhawks finding their groove in the second half that allowed them to pull away.

Through six lead changes and six ties throughout the contest, the Warhawks outscored the Cardinals in three of the four quarters, holding the lead for 32 minutes. ULM shot 43% from the field to Lamar's 36%, also going 5-of-11 from beyond the arc, all three-pointers courtesy of Jackson. Both teams combined for 46 turnovers, ULM forcing 25 out of their opponent and capitalizing with 17 points off turnovers.

Jackson led the squad with a career-high 25 points, shooting 7-of-11 from the field and 5-of-6 from three. She also hit six of seven free throws to add to her tally, collecting four boards and two steals to add to her stat line. **J'Mani Ingram** and **Marcavia Shavers** also scored in double digits. Ingram saw 14 points, six rebounds and three assists, while Shavers came a board away from a double-double with nine, alone with an assist and two steals. **Asia Barclay** and **Keshunti Nichols** tallied a block each in the gritty defensive effort.

Both teams were in for a fight, as the defensive battle prevented a score from either team for the opening two minutes. Ingram was able to get the Warhawks started, with the Cardinals responding just one possession later.

As the Cardinal defense was able to force a drought in the field for the home team, the Warhawks used turnovers and steals to their advantage, staying down only a possession throughout the three-minute drought. ULM began to find their groove at the three-minute mark in the first quarter, **Asjah Inniss** tallying a three-point play to find the lead on a 7-0 scoring run. The Cardinals were held without a field goal for five minutes as the Warhawks pulled ahead, the quarter closing with a 13-9 score in favor of ULM.

The second quarter opened with the Warhawks notching five unanswered points, preventing the Cardinals scoring for two minutes. This included a Jackson triple, the first for the Warhawks of the contest. While Lamar was able to get comfortable hitting a few triples and forcing a drought for ULM, the Warhawks maintained a lead through the quarter. The half concluded with a Cardinal 6-0 scoring run, as **Kamryn Wilson** hit a triple in the final seconds to tie things up at 26.

With the game tied, it was Wilson for Lamar who came in clutch, hitting a jumper to regain the lead for the Cardinals in the opening seconds of the half. Ingram and Barclay were able to respond to return the lead to the home team, but Wilson hit another shot from beyond the arc to switch the lead again. Three fouls in succession for Lamar allowed for free throws to get ULM back in the game, the pendulum swinging in the Warhawk favor.

The home team went on to force five turnovers and score seven unanswered points to begin to pull away. In reaching the fourth quarter, Jackson hit another triple to extend the lead to 10, the largest lead of the day with six minutes remaining in the contest. She then forced a three-point play, extending the lead further. Shavers saw six points in the fourth to find her double-figure score, Jackson hitting two more triples in the fourth for that 15-point advantage and eventual victory.

SERIES HISTORY

Games	9
Series Record.....	1-8
At ULM.....	1-1
At Mississippi State.....	0-7
At Neutral Site	0-0
Last Win	W, 81-64 (2/15/1994)
Last Loss.....	L, 70-78 (12/17/2024)
Largest Margin of Defeat.....	55, 94-39 (11/29/2022)
Largest Margin of Victory	17, 81-64 (2/15/1994)
Current Streak	L7

TALE OF THE TAPE

ULM	RECORD	MSST
5-1	PPG	6-1
66.5	OPP. PPG	77.0
57.0	REB/GAME	54.9
39.7	OPP. REB/GAME	42.0
30.5	REB MARGIN	30.1
9.2	FG %	0.0
.414	OPP. FG %	.471
.362	3-PT FG %	.356
.356	OPP. 3-PT FG %	.374
.282	FT %	.261
.651	ASSISTS/GAME	.720
12.8	BLOCKS/GAME	15.3
1.5	STEALS/GAME	6.7
10.8		9.0

WARHAWK STAT LEADERS

DOUBLE-FIGURE SCORING GAMES

J'Mani Ingram.....	4
Asjah Inniss.....	3
Keshunti Nichols.....	3
Nakiyah Mays-Prince.....	3
Jazmine Jackson.....	2
Marcavia Shavers.....	2
Kamille Brown.....	1
Opponents.....	16

20-POINT GAMES

Jazmine Jackson.....	1
Opponents.....	2

30-POINT GAMES

40-POINT GAMES

DOUBLE-FIGURE REBOUNDING GAMES

Marcavia Shavers.....	1
-----------------------	---

DOUBLE-DOUBLES

GAMES LEADING ULM IN SCORING

Jazmine Jackson.....	2
Kamille Brown.....	1
J'Mani Ingram.....	1
Nakiyah Mays-Prince.....	1
Keshunti Nichols.....	1
Marcavia Shavers.....	1

GAMES LEADING ULM IN REBOUNDING

Marcavia Shavers.....	4
Asia Barclay.....	1
J'Mani Ingram.....	1
Asjah Inniss.....	1
Jazmine Jackson.....	1

GAMES LEADING ULM IN ASSISTS

Nakiyah Mays-Prince.....	4
Asjah Inniss.....	2

GAMES LEADING ULM IN STEALS

Kamille Brown.....	2
Asjah Inniss.....	2
Nakiyah Mays-Prince.....	2
Keshunti Nichols.....	2
Asia Barclay.....	1
Marissa Gasaway.....	1

GAMES LEADING ULM IN BLOCKS

Keshunti Nichols.....	2
Kamille Brown.....	1
J'Mani Ingram.....	1
Asjah Inniss.....	1
Abby Leahy.....	1
Asia Barclay.....	1

BENCH BOOST –

The Warhawk reserves have been the offensive catalysts for the team this season. ULM's bench was responsible for 40 of the team's 80 points vs. Eastern Michigan, the most points scored in a game by the reserves since they scored 47 during the 117-60 season opening win vs. Central Baptist in 2024. The Warhawk bench has outscored the opposing team's bench in five out of six games this season.

RELENTLESS REBOUNDING –

Graduate student **Marcavia Shavers** continued her excellent career on the glass Thursday vs. Sam Houston. The Biloxi, Miss. native pulled down a season-high 12 rebounds, including four on the offensive glass. It was the fifth double-digit rebounding total for Shavers in her career which includes a high of 20 at St. Bonaventure during her time with Saint Louis. Shavers tallied nine at home against Lamar (Nov. 23), just one shy of the team's first double-double.

JACKSON WITH 25 –

Redshirt junior **Jazmine Jackson** put on a show in the win vs. Lamar on November 23, becoming the first ULM player this season to break the 20-point mark. The Jacksonville, Fla. native scored a career-high 25 points, including hitting five of six attempts from beyond the arc. Jackson also put in work on the glass as she finished with four rebounds. The 25 points also moved Jackson into the lead for best single-game total by a Warhawk this season.

FLETCHER'S FAST START –

Head coach **Scotty Fletcher** became the second coach in program history to win their first four games in charge of ULM on Sunday vs. Arkansas-Pine Bluff. Fletcher joins **Linda Harper** who was the first to accomplish the feat at the beginning of the 1978-79 season. Fletcher is also one of four coaches to have won their first game leading ULM and their first game inside Fant-Ewing Coliseum. The last time the Warhawks started a season 4-0 was the historic 1984-85 season that concluded with a berth to the NCAA Final Four.

MEMORABLE MILESTONES –

Graduate student **Asjah Inniss** achieved a pair of impressive career benchmarks vs. Grambling State. On a three-point shot late in the second quarter, Inniss would record her 500th career point in what was her 100th career game. **Katelyn Chomko** also reached a career milestone in style as her final three-pointer vs. Arkansas-Pine Bluff brought her to an even 100 points for her career. **Keshunti Nichols** reached 500 career points vs. Sam Houston (Nov. 20), while J'Mani Ingram reached the 800-point benchmark against Lamar (Nov. 23). **Nakiyah Mays-Prince** (596) is next in line to reach new scoring mark for her career.

FREQUENTLY FORCING TURNOVERS –

ULM have been prolific this season when it comes to causing their opponents to make mistakes. The Warhawks are forcing opposing teams to turn the ball over at an average of 22.5 times per game. ULM have seen two different players establish career highs for steals in a game this year. Graduate student **Keshunti Nichols** recorded four steals in the win vs. Louisiana Tech before junior **Kamille Brown** posted a career high of five steals vs. Grambling State. As a team, the Warhawks are averaging 10.8 steals per game and have seen four players record at least one game of three steals or more so far.

WARHAWKS AT A GLANCE –

ULM welcome 14 newcomers to the bayou for the 2025-26 season under first year head coach **Scotty Fletcher**. The roster features eight guards, four forwards, and two centers. The Warhawks join Indiana State as the only DI programs with zero returners this season.

The Warhawks will look to lean on past experience this year as every member of the roster enters this season as an upperclassman. The team is comprised of four juniors, two seniors, and eight graduate students. ULM are among a select few of DI programs that are 100% made up of upperclassmen and are one of six programs with no true freshmen on their roster. Familiarity is also a key theme of this roster, as five players at one point or time played for Coach Fletcher at Pear River Community College.

ALL OVER THE MAP –

In addition to making up an entirely new roster, ULM's 14 players also represent a multitude of different states and places of origin. The Warhawks claim players from 11 different states, including a team high three players from the neighboring state of Mississippi. Graduate forward **Nailea Nicholas** grew up in Fresno, Calif., which would be the 12th different state represented, but is originally from the U.S. Virgin Islands. ULM are tied with Brown University for the most states represented on their roster.

EXCELLENT EXPERIENCE –

ULM will have the luxury of calling on the services of several players with substantial Division I experience. Of the 11 players on the roster who have played at the DI level, eight of them have featured in 50 or more games over the course of their career. **J'Mani Ingram** leads the group having played in 107 career games at the DI level entering this season, followed by **Asjah Inniss** at 97 and **Nakiyah Mays-Prince** at 89.

UP NEXT –

The Warhawks remain the road for four more games to close out 2025, next traveling to Alabama on Sunday (Dec. 7). Tipoff against the Crimson Tide is scheduled for 4 p.m. CT.

SPECIALTY POINTS

DATE	OPPONENT	OFF T/O	IN PAINT	2ND CHANCE	FB	BENCH
Nov. 3	Eastern Michigan	14	30	18	6	40
Nov. 7	Louisiana Tech	16	40	6	3	38
Nov. 11	Grambling	13	40	10	7	24
Nov. 16	Arkansas-Pine Bluff	31	22	14	17	38
Nov. 20	at Sam Houston	10	20	16	5	14
Nov. 23	Lamar	17	36	14	9	2

AMONG THE SUN BELT

(through games on Nov. 28)

Rebounds per Game

12. Marcavia Shavers 6.3

Free Throw Percentage

15. Asjah Inniss722

18. J'Mani Ingram684

Assists per Game

1. Nakiyah Mays-Prince 4.7

Steals per Game

T15. Kamille Brown 2.0

Assist/Turnover Ratio

5. Nakiyah Mays-Prince 1.6

Offensive Rebounds per Game

T10. Marcavia Shavers 2.3

T10. Keshunti Nichols 2.3

Defensive Rebounds per Game

T15. Marcavia Shavers 4.0

INSIDE THE NUMBERS

OFFENSIVE STATS

	SBC	NCAA
Points per Game	66.5	12
Reb. per Game	39.7	8
Reb. Margin	9.2	3
Offensive Reb.	15.5	5
Assists	12.8	7
FG%	.414	7
3FG%	.356	4
FT%	.651	12
Turnover Margin	2.17	10
Assist/Turnover	0.63	11

DEFENSIVE STATS

	SBC	NCAA
Points Allowed	57.0	3
Opp. FG%	.362	5
Opp. 3FG%	.282	8
Steals	10.8	6
Blocks	1.5	12
Defensive Reb.	24.2	8

ULM STREAKS

Category

Current Streak

Overall	Won 1
Sun Belt	Lost 3
vs. Unranked Teams Anywhere	Won 1
vs. Ranked Teams Anywhere	Lost 3
Home	Won 7
Home vs. Sun Belt	Won 2
Home Non-Conference	Won 5
Road	Lost 6
Road Sun Belt	Lost 5
Road Non-Conference	Lost 5
Neutral	Lost 1
Neutral Sun Belt	Lost 2
Neutral Non-Conference	Won 1

2025-26 SUN BELT STANDINGS

TEAM	SUN BELT	PCT.	OVERALL	H	A	N	PCT
Southern Miss	0-0	.000	6-1	5-0	1-0	0-1	.857
Troy	0-0	.000	6-1	4-0	1-1	1-0	.857
Old Dominion	0-0	.000	5-1	3-0	2-0	0-0	.833
South Alabama	0-0	.000	5-1	4-1	1-0	0-0	.833
ULM	0-0	.000	5-1	5-0	0-1	0-0	.833
App State	0-0	.000	5-2	4-1	1-1	0-0	.714
Marshall	0-0	.000	5-2	4-1	0-1	1-0	.714
James Madison	0-0	.000	4-3	4-2	0-1	0-0	.571
Georgia State	0-0	.000	4-4	3-1	1-3	0-0	.500
Arkansas State	0-0	.000	3-3	1-1	2-2	0-0	.500
Georgia Southern	0-0	.000	3-3	2-1	1-2	0-0	.500
Coastal Carolina	0-0	.000	3-4	2-1	1-3	0-0	.429
Texas State	0-0	.000	1-5	0-3	1-2	0-0	.167
Ragin' Cajuns	0-0	.000	0-5	0-2	0-3	0-0	.000

2025-26 WARHAWK STARTING LINEUPS

	Guard	Guard	Guard	Forward	Forward
Nov. 3 vs. Eastern Michigan	Jackson	Inniss	Ingram	Barclay	Shavers
Nov. 7 vs. Louisiana Tech	Jackson	Inniss	Ingram	Barclay	Shavers
Nov. 11 vs. Grambling State	Jackson	Inniss	Ingram	Barclay	Shavers
Nov. 16 vs. Arkansas-Pine Bluff	Jackson	Inniss	Ingram	Barclay	Shavers
Nov. 20 at Sam Houston	Jackson	Inniss	Ingram	Barclay	Shavers
Nov. 23 vs. Lamar	Jackson	Inniss	Ingram	Barclay	Shavers

2025-26 WARHAWK STATISTICAL TRENDS

Games played in Fant-Ewing Coliseum:	5-0	When committing fewer turnovers than opponent:	4-0
Games played on the road:	0-1	When opponent commits fewer turnovers:	1-1
Games played at a neutral site:	0-0	When turnovers are equal:	0-0
Games played in November:	5-1	When ULM scores less than 50 points:	0-1
Games played in December:	0-0	When ULM scores 50-59 points:	0-0
Games played in January:	0-0	When ULM scores 60-69 points:	1-0
Games played in February:	0-0	When ULM scores 70-79 points:	3-0
Games played in March:	0-0	When ULM scores 80-89 points:	1-0
When leading at halftime:	4-0	When ULM scores 90-99 points:	0-0
When trailing at halftime:	0-1	When ULM scored over 100 points:	0-0
When tied at halftime:	1-0	When opponent scores less than 50 points:	1-0
When leading at the end of the third quarter:	5-0	When opponent scores 50-59 points:	2-1
When trailing at the end of the third quarter:	0-1	When opponent scores 60-69 points:	1-0
When tied at the end of the third quarter:	0-0	When opponent scores 70-79 points:	1-0
When shooting .500 or better from the field:	0-0	When opponent scores 80-89 points:	0-0
When shooting less than .500 from the field:	5-1	When opponent scores 90-99 points:	0-0
When opponent shoots .500 or better from the field:	0-0	When opponent scores over 100 points:	0-0
When opponent shoots less than .500 from the field:	5-1	Games decided by five points or less:	0-0
When outrebounding opponent:	4-1	Games decided by 6-10 points:	2-0
When outrebounded by opponent:	1-0	Games decided by 11-19 points:	2-0
When rebounding totals are equal:	0-0	Games decided by 20 points or more:	1-1
When hitting more free throws than opponent:	4-0	Last five games:	4-1
When hitting fewer free throws than opponent:	1-1	Last 10 games:	6-4
When hitting the same number of free throws as opponent:	0-0	Largest deficit overcome to win:	6
		Largest lead surrendered in a loss:	0

GAME-BY-GAME LEADERS

OPPONENT	POINTS	3-POINT FGS	FREE THROWS	REBOUNDS	ASSISTS	BLOCKS	STEALS
Eastern Michigan	Nichols/Mays-Prince (12)	Mays-Prince (2)	Mays-Prince (4)	Shavers, Inniss (6)	Mays-Prince (5)	Leahy (2)	Innis (3)
Louisiana Tech	Brown (16)	Brown (3)	Innis (6)	Ingram (6)	Mays-Prince (7)	Ingram/Innis (1)	Nichols (4)
Grambling State	Ingram (16)	Innis/Jackson (1)	Ingram/Innis (4)	Barclay/Shavers (7)	Mays-Prince (4)	Brown/Nichols (1)	Brown (5)
Arkansas-Pine Bluff	Jackson (16)	Jackson (4)	Mays-Prince (4)	Jackson (8)	Mays-Prince (6)	--	4 players (2)
Sam Houston	Shavers (8)	Innis/Mays-Prince (1)	Ingram (3)	Shavers (12)	Innis (3)	--	Innis, Mays-Prince (2)
Lamar	Jackson (25)	Jackson (5)	Jackson (6)	Shavers (9)	Innis (5)	Nichols/Barclay (1)	Nichols (3)

LEADS AND DEFICITS

DATE	OPPONENT	LARGEST LEAD	LARGEST DEFICIT	TIME LED	TIME TRAILED	TIME TIED	RESULT
11/3	Eastern Michigan	17	4	29:27	7:31	3:42	W 80-71
11/7	Louisiana Tech	13	2	34:19	2:43	3:38	W 70-62
11/11	Grambling State	26	6	30:12	7:42	2:46	W 74-55
11/16	Arkansas-Pine Bluff	29	5	36:28	2:23	1:49	W 79-50
11/20	at Sam Houston	--	30	--	39:07	--	L 57-34
11/23	Lamar	17	2	32:01	3:50	4:09	W, 62-47

THE LAST TIME...

...A ULM team

Scored 100+ points	W, 117 vs. Central Baptist (11/4/2024)
Scored 100+ points in a non-overtime game.....	W, 117 vs. Central Baptist (11/4/2024)
Scored 100+ points in a conference game	W, 101 at Texas State (2/6/1988)
Scored 100+ points in a Sun Belt game.....	None
Scored 90+ points	L, 90 vs. Marshall (2/24/2024)
Scored 90+ points in a Sun Belt game.....	L, 90 vs. Marshall (2/24/2024)
Played in an overtime game.....	L, 82-84 vs. Southern Miss (2/18/2023)
Won an overtime game.....	W, 90-84 vs. Texas State (3/7/2015)
Played in a double-overtime game	L, 65-68 vs. Ragin' Cajuns (2/12/2015)
Played in a triple-overtime game.....	None
Played in consecutive overtime games.....	2
.....	at Ragin' Cajuns (2/13/2008) and vs. Denver (2/16/2008)
Held a team to 40 points or less.....	38, vs. Champion Christian (12/5/2023)
Held a team to 20 points or less in a half.....	19, vs. Central Arkansas (12/20/2024)
Shot 60+ percent FG.....	60.9 (28-46) vs. Middle Tennessee (L, 70-83), 2/7/2007
Shot 60+ percent FG in a half	62.5 (15-24) at Southern Illinois (W, 79-66), 11/13/2024
Held a team to 20 percent FG	29.0 (18-62) vs. Grambling State (W, 74-55), 11/11/2025
Held a team to 20 percent FG in a half	24.2 (8-33) vs. Grambling State (W 74-55), 11/11/2025
Made 10+ 3-pointers.....	12, vs. Arkansas-Pine Bluff (11/16/2025)
Made 15+ 3-pointers.....	15, vs. Miami (OH) (11/11/2023)
Did not make a 3-pointer	(0-5), at South Alabama (2/9/2023)
Held a team to zero 3-pointers	(0-15), Louisiana Christian (11/11/2024)
Shot 90 percent FT (min. 10 attempts).....	90.0 (9-10), at South Alabama (2/8/2025)
Attempted 35+ free throws.....	35, at Troy (1/12/2023)
Made 30+ free throws	31, vs. Louisiana Christian (12/6/2020)
Had 30+ assists.....	34, vs. Nicholls State (12/11/1982)
Had 25+ assists.....	25, vs. Central Baptist (11/4/2024)
Forced 30+ turnovers.....	39, vs. Champion Christian (12/5/2023)
Forced 25+ turnovers.....	26, vs. Sam Houston State (11/20/2025)
Had 20+ steals	31, vs. Champion Christian (12/5/2023)
Had 15+ steals	15, vs. Arkansas-Pine Bluff (11/16/2025)
Had 10+ blocks.....	14, vs. Ragin' Cajuns (2/16/2023)
Overcame 10-point deficit to win.....	vs. Southern Miss (1/9/2025)
.....	Trailed by 13, 26-13, with 9:03 left in 2Q, won 84-75
Had six players score in double figures	vs. Central Baptist (11/4/2024)
.....	Sakyia White (18), Meloney Thames (17), Jakayla Johnson (16), Cianté Downs (16), Laila Walker (12), Nya Valentine (11)
Had five players score in double figures.....	vs. Grambling State (11/11/2025)
.....	J'Mani Ingram (16), Marcavia Shavers (12), Asjah Inniss (11), Keshunti Nichols (11), Nakiyah Mays-Prince (11)
Had two players score 20+ points	vs. Troy (2/20/2025)
.....	Meloney Thames (22), Jakayla Johnson (20)

THE LAST TIME...

...A ULM player

Scored 40+ points	53, Felisha Edwards vs. Southern Miss (3/1/1991)
Scored 30+ points	31, Daisha Bradford at Troy (4/1/2024)
Scored 20+ points	25, Jazmine Jackson vs. Lamar (11/23/2025)
Scored 10+ points in 10+ consecutive games	16, Jakayla Johnson (1/25/2024-3/27/2024)
.....	vs. Arkansas State (1/25/2024) thru vs. Southern Miss (3/27/2024)
Scored 20+ points in consecutive games	2, Jakayla Johnson (2/20/2025-2/22/2025)
.....	20, vs. Troy (2/20/2025) and vs. Ragin' Cajuns (2/22/2025)
Scored 20+ points in 3+ consecutive games	3, Daisha Bradford (1/18/2024-1/25/2024)
.....	20, at Ragin' Cajuns (1/18/2024), 27, at Southern Miss (1/20/2024) and 23, vs. Arkansas State (1/25/2024)
Made 10+ field goals	10, Meloney Thames at Troy (2/12/2025)
Shot 100% FG (min. 5 attempts).....	9-9, Sakyia White vs. Central Baptist (11/4/2024)
Made 5+ 3-pointers.....	5, Jazmine Jackson vs. Lamar (11/23/2025)
Made 10+ free throws	10, Meloney Thames vs. Southern Miss (1/9/2025)
Had 15+ rebounds	21, Sakyia White at Marshall (2/26/2025)
Had a double-double.....	Sakyia White (17 points, 21 rebounds) at Marshall (2/26/2025)
Had consecutive double-doubles.....	2, Daisha Bradford
.....	14 pts, 10 rebs at App State and 11 points, 12 rebs at Toledo (2/7/2024 thru 2/10/2024)
Had a triple-double	Daisha Bradford vs. Georgia Southern (3/6/2024)
.....	11 points, 11 rebounds, 10 assists
Had 15+ assists.....	17, Eun Jung Lee vs. LSU (1/18/1984)
Had 10+ assists.....	10, Daisha Bradford vs. Georgia Southern (3/6/2024)
Had 10+ steals	10, Felisha Edwards vs. North Texas (1/23/1988)
Had 5+ steals	5, Kamille Brown vs. Grambling State (11/11/2025)
Had 10+ blocks.....	10, Emma Merriweather vs. Ragin' Cajuns (2/16/2023)
Had 5+ blocks.....	7, Emma Merriweather vs. Troy (2/11/2023)
Played every minute in a game.....	Daisha Bradford (40:00) at South Alabama (2/15/2024)
Played more than 40 minutes	Linda van Schaik (42:47) vs. Mississippi Valley State (12/20/2021)

0

JAZMINE JACKSON

Guard | R-Jr. | 5-8 | Jacksonville, Fla. | Pearl River CC

SEASON HIGHS

Points	25, vs. Lamar (11/23/2025)
Minutes	36, vs. Lamar (11/23/2025)
Field Goals	7, vs. Lamar (11/23/2025)
3-PT Field Goals	5, vs. Lamar (11/23/2025)
Free Throws	6, vs. Lamar (11/23/2025)
Rebounds	8, vs. Arkansas-Pine Bluff (11/16/2025)
Assists	2, vs. Arkansas-Pine Bluff (11/16/2025)
Blocks	
Steals	2, vs. Lamar (11/23/2025)

CAREER HIGHS

Points	25, vs. Lamar (11/23/2025)
Minutes	41, vs. Longwood (1/28/2023)
Field Goals	7, vs. Lamar (11/23/2025)
3-PT Field Goals	5, vs. Lamar (11/23/2025)
Free Throws	6, vs. Lamar (11/23/2025)
Rebounds	9, vs. Longwood (1/28/2023)
Assists	4, two times, last vs. Radford (2/11/2023)
Blocks	1, vs. Gardner-Webb (12/29/2022)
Steals	3, two times, last vs. Radford (2/11/2023)



CAREER STATISTICS

Season	GP	GS	MIN	M/G	FGM	FGA	FG%	3FG	3FGA	3FG%	FTM	FTA	FT%	OR	DR	TR	R/G	PF	AST	TO	STL	BLK	PTS	AVG
2022-23	28	15	567	20.3	48	176	.273	14	59	.237	30	44	.682	29	57	86	3.1	64	34	64	21	1	140	5.0
2023-24	3	0	44	14.7	2	17	.154	0	6	.000	0	0	.000	0	0	0	0.0	5	2	5	1	0	4	1.3
2025-26	6	6	102	17.0	15	30	.500	10	18	.556	10	13	.769	6	12	18	3.0	5	2	2	4	0	50	8.3
TOTAL	37	21	706	19.1	65	220	.295	24	83	.289	40	57	.702	36	70	106	2.9	74	39	72	26	1	194	5.2

2025-26 (ULM)

- Racked up 16 points, along with four three-pointers, with eight rebounds vs. UAPB
- Notched a career-best 25 points, shooting 7-of-11 from the field and 5-of-6 from beyond the arc vs. Lamar

2024-25 (PEARL RIVER CC)

- Led Pearl River in scoring with an average of 12.9 points per game, shot 32.2% from the field, 31.6% from beyond the arc and 80.5% from the free throw line
- Grabbed a total of 153 rebounds, enough for an average of 5.5 per game
- Added 53 assists, 41 steals (1.5/game) and three blocks
- Recorded 19 games of double-digit scoring, including a career high 29 points vs. #8 Three Rivers CC, going 11-for-12 from the free throw line
- Posted five double-doubles, including three in a row, with one featuring a career high 13 rebounds in a win vs. Mississippi Gulf Coast CC

FAST FACTS

- Daughter of Jackie Jackson

1

VANESSA SCHWARZMANN

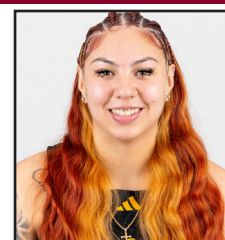
Guard | Gr. | 5-9 | Upper Marlboro, Md. | Elizabeth City State University

SEASON HIGHS

Points	
Minutes	
Field Goals	
3-PT Field Goals	
Free Throws	
Rebounds	
Assists	
Blocks	
Steals	

CAREER HIGHS

Points	9, at UNCW (2/4/2024)
Minutes	26, at Northeastern (3/3/2024)
Field Goals	3, two times, last at Northeastern (3/3/2024)
3-PT Field Goals	2, three times, last vs. Campbell (3/9/2024)
Free Throws	2, vs. Campbell (3/9/2024)
Rebounds	2, two times, last vs. Stony Brook (3/7/2024)
Assists	2, at Northeastern (3/3/2024)
Blocks	
Steals	1, three times, last vs. Campbell (3/9/2024)



CAREER STATISTICS

Season	GP	GS	MIN	M/G	FGM	FGA	FG%	3FG	3FGA	3FG%	FTM	FTA	FT%	OR	DR	TR	R/G	PF	AST	TO	STL	BLK	PTS	AVG
2023-24	20	1	150	7.5	11	44	.250	9	35	.257	3	4	.750	2	7	9	0.5	6	7	11	3	0	34	1.7
TOTAL	20	1	150	7.5	11	44	.250	9	35	.257	3	4	.750	2	7	9	0.5	6	7	11	3	0	34	1.7

2024-25 (ELIZABETH CITY STATE UNIVERSITY)

- Played in 25 games total, making 19 starts
- Averaged 6.2 points per game, shot 32.7% from the field, 31.3% from beyond the arc and 58.8% from the free throw line
- Added 47 rebounds, 37 assists, 15 steals and six blocks
- Scored in double figures five times, including a season-high 15 points vs. Virginia State (5-11 from 3-point range)
- Went a perfect 4-4 from downtown in a 13-point effort at Clark Atlanta

2 MARISSA GASAWAY

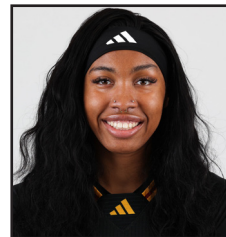
Forward | Gr. | 5-11 | Louisville, Ky. | Winthrop

SEASON HIGHS

Points..... 7, vs. Arkansas-Pine Bluff (11/16/2025)
Minutes..... 19, vs. Louisiana Tech (11/7/2025)
Field Goals..... 3, vs. Arkansas-Pine Bluff (11/16/2025)
3-PT Field Goals..... 1, vs. Arkansas-Pine Bluff (11/16/2025)
Free Throws..... 2, vs. Grambling State (11/11/2025)
Rebounds..... 5, two times, last vs. Sam Houston State (11/20/2025)
Assists..... 2, two times, last vs. Arkansas-Pine Bluff (11/16/2025)
Blocks.....
Steals..... 2, vs. Arkansas-Pine Bluff (11/16/2025)

CAREER HIGHS

Points..... 23, at Queens (NC) (11/13/2024)
Minutes..... 39, at UNC Asheville (1/17/2024)
Field Goals..... 10, at Queens (NC) (11/13/2024)
3-PT Field Goals..... 1, vs. Arkansas-Pine Bluff (11/16/2025)
Free Throws..... 7, four times, last vs. American (11/29/2024)
Rebounds..... 18, two times, last vs. Radford (3/7/2024)
Assists..... 4, at Radford (2/12/2025)
Blocks..... 2, three times, last vs. Radford (3/7/2024)
Steals..... 4, at SC State (11/18/2023)



CAREER STATISTICS

Season	GP	GS	MIN	M/G	FGM	FGA	FG%	3FG	3FGA	3FG%	FTM	FTA	FT%	OR	DR	TR	R/G	PF	AST	TO	STL	BLK	PTS	AVG
2023-24	30	30	870	29.0	101	236	.428	0	2	.000	81	111	.730	138	180	318	10.6	84	71	78	53	1	333	11.1
2024-25	31	18	549	17.7	76	172	.442	0	0	.000	52	83	.627	73	115	188	6.1	46	22	55	18	4	204	6.6
2025-26	6	0	72	12.0	5	15	.333	1	3	.333	4	8	.500	9	10	19	3.2	7	4	8	4	0	15	2.5
TOTAL	67	48	1498	22.4	182	423	.430	1	5	.200	137	202	.678	220	305	525	7.8	137	54	158	61	18	502	7.5

2025-26 (ULM)

- Posted season highs in points (7), rebounds (5) and steals (2) vs. Arkansas-Pine Bluff

2024-25 (WINTHROP)

- Averaged 6.6 PPG, shot 44.2% from the field and 62.7% from the free throw line
- Finished second on the team and eighth in the Big South with 188 rebounds, good for an average of 6.1 per game
- Added 22 assists, 18 steals and four blocks
- Scored a career high 23 points (10-15 FG) while grabbing 15 rebounds in the win vs. Queens (NC)

FAST FACTS

- Daughter of Michelle Mimms and Maurice Gasaway

3 NAILEA NICHOLAS

Forward | Gr. | 6-0 | St. Thomas, U.S. Virgin Islands | San Jose State

SEASON HIGHS

Points..... 6, two times, last vs. Arkansas-Pine Bluff (11/16/2025)
Minutes..... 9, vs. Sam Houston (11/20/2025)
Field Goals..... 3, vs. Eastern Michigan (11/3/2025)
3-PT Field Goals..... 2, vs. Arkansas-Pine Bluff (11/16/2025)
Free Throws.....
Rebounds..... 3, vs. Eastern Michigan (11/3/2025)
Assists..... 2, vs. Arkansas-Pine Bluff (11/16/2025)
Blocks.....
Steals..... 1 three times, last vs. Sam Houston (11/20/2025)

CAREER HIGHS

Points..... 15, vs. Fresno State (2/25/2023)
Minutes..... 36, vs. Saint Mary's (CA) (12/29/2023)
Field Goals..... 7, vs. Fresno State (2/25/2023)
3-PT Field Goals..... 2, four times, last vs. Arkansas-Pine Bluff (11/16/2025)
Free Throws..... 4, vs. Boise State (2/23/2023)
Rebounds..... 13, at UNLV (2/16/2023)
Assists..... 4, vs. Fresno State (1/3/2024)
Blocks..... 1, 11 times, last vs. Wyoming (2/28/2024)
Steals..... 2, four times, last vs. Cal Poly (11/11/2023)



CAREER STATISTICS

Season	GP	GS	MIN	M/G	FGM	FGA	FG%	3FG	3FGA	3FG%	FTM	FTA	FT%	OR	DR	TR	R/G	PF	AST	TO	STL	BLK	PTS	AVG
2022-23	31	12	526	17.0	48	118	.407	8	35	.229	11	19	.579	41	70	111	3.6	52	9	39	12	5	115	3.7
2023-24	30	9	434	14.5	32	79	.405	9	30	.300	9	16	.563	19	56	75	2.5	38	26	36	17	6	82	2.7
2024-25	1	0	2	2.0	0	0	.000	0	0	.000	0	0	.000	0	0	0	0.0	0	0	0	0	0	0	0.0
2025-26	6	0	35	5.8	5	9	.556	2	5	.400	--	--	--	2	6	8	1.3	8	2	0	3	0	12	2.0
TOTAL	68	21	998	14.7	85	206	.413	19	70	.271	20	35	.571	62	132	194	2.9	98	37	75	32	11	209	3.1

2025-26 (ULM)

- Connected on both of her three-point attempts to tie her season high of six points vs. Arkansas-Pine Bluff

2024-25 (SAN JOSE STATE)

- Missed most of the season due to injury, appeared for two minutes in the win at Xavier

FAST FACTS

- Has three siblings
- Born in the Virgin Islands and moved to Fresno, California

7

J'MANI INGRAM

Guard | Gr. | 5-7 | North Augusta, S.C. | App State

SEASON HIGHS

Points..... 16, vs. Grambling State (11/11/2025)
Minutes..... 27, vs. Louisiana Tech (11/7/2025)
Field Goals..... 6, two times, last vs. Lamar (11/23/2025)
3-PT Field Goals.....
Free Throws..... 4, two times, last vs. Grambling State (11/11/2025)
Rebounds..... 6, three times, last vs. Lamar (11/23/2025)
Assists..... 3, vs. Lamar (11/23/2025)
Blocks..... 1, vs. Louisiana Tech (11/7/2025)
Steals..... 1, three times, last vs. Arkansas-Pine Bluff (11/16/2025)

CAREER HIGHS

Points..... 23, vs. Georgia Southern (1/20/2024)
Minutes..... 43, vs. Hampton (1/26/2022)
Field Goals..... 9, vs. Claflin (12/12/2021)
3-PT Field Goals.....
Free Throws..... 7, vs. Georgia Southern (1/20/2024)
Rebounds..... 11, vs. Ohio (11/11/2023)
Assists..... 4, vs. Campbell (1/19/2022)
Blocks..... 2, vs. Charleston Southern (2/15/2022)
Steals..... 5, at USC Upstate (2/9/2022)



CAREER STATISTICS

Season	GP	GS	MIN	M/G	FGM	FGA	FG%	3FG	3FGA	3FG%	FTM	FTA	FT%	OR	DR	TR	R/G	PF	AST	TO	STL	BLK	PTS	AVG
2020-21	24	1	392	16.3	56	126	.444	0	1	.000	35	73	.479	22	28	50	2.1	46	19	38	20	0	147	6.1
2021-22	29	25	806	27.8	129	305	.423	0	1	.000	57	112	.509	40	121	161	5.6	63	46	64	38	4	315	10.9
2023-24	27	11	428	15.9	59	156	.378	0	2	.000	38	49	.776	27	58	85	3.1	48	15	53	14	2	156	5.8
2024-25	27	0	279	10.3	46	94	.489	0	1	.000	25	411	.610	26	45	71	2.6	35	16	26	10	1	117	4.3
2025-26	6	6	141	23.6	24	48	.500	--	--	--	15	23	.652	8	19	27	4.5	20	9	24	3	1	63	10.5
TOTAL	114	44	2102	18.4	318	739	.430	0	5	.000	172	302	.570	123	273	396	3.5	215	108	206	85	8	808	7.1

2025-26 (ULM)

- Scored a season-high 16 points while adding a season-high six rebounds in the win vs. Grambling State
- Saw 26 minutes of action vs. Lamar, posting 14 points, shooting 6-of-9 from the field

2024-25 (APP STATE)

- Averaged 4.3 PPG, shot 48.9% from the field and 61% from the free throw line
- Recorded 71 rebounds, good for an average of 2.6 per game
- Scored a season high 18 points vs. Columbia (SC), nearly equaled that with a 17-point performance at Southern Miss

FAST FACTS

- Daughter of Monokia Ingram and James Ingram Jr.
- Has three siblings

9

KAMILLE BROWN

Guard | Jr. | 5-8 | Conway, Ark. | Three Rivers CC

SEASON HIGHS

Points..... 16, vs. Louisiana Tech (11/7/2025)
Minutes..... 22, vs. Louisiana Tech (11/7/2025)
Field Goals..... 5, vs. Louisiana Tech (11/7/2025)
3-PT Field Goals..... 3, vs. Louisiana Tech (11/7/2025)
Free Throws..... 3, two times, last vs. Arkansas-Pine Bluff (11/16/2025)
Rebounds..... 5, two times, last vs. Grambling State (11/11/2025)
Assists..... 2, vs. Lamar (11/23/2025)
Blocks..... 1, vs. Grambling State (11/11/2025)
Steals..... 5, vs. Grambling State (11/11/2025)

CAREER HIGHS

Points..... 16, vs. Louisiana Tech (11/7/2025)
Minutes..... 22, vs. Louisiana Tech (11/7/2025)
Field Goals..... 5, vs. Louisiana Tech (11/7/2025)
3-PT Field Goals..... 3, vs. Louisiana Tech (11/7/2025)
Free Throws..... 3, two times, last vs. Arkansas-Pine Bluff (11/16/2025)
Rebounds..... 5, two times, last vs. Grambling State (11/11/2025)
Assists..... 2, vs. Lamar (11/23/2025)
Blocks..... 1, vs. Grambling State (11/11/2025)
Steals..... 5, vs. Grambling State (11/11/2025)



CAREER STATISTICS

Season	GP	GS	MIN	M/G	FGM	FGA	FG%	3FG	3FGA	3FG%	FTM	FTA	FT%	OR	DR	TR	R/G	PF	AST	TO	STL	BLK	PTS	AVG
2025-26	6	0	89	14.8	7	17	.412	3	7	.429	6	11	.545	6	10	16	2.7	10	5	6	12	1	23	3.8
TOTAL	6	0	89	14.8	7	17	.412	3	7	.429	6	11	.545	6	10	16	2.7	10	5	6	12	1	23	3.8

2025-26 (ULM)

- Established career highs in points (16) and rebounds (5) in the win vs. Louisiana Tech
- Posted a career-high five steals vs. Grambling State
- Tallied a career-best two assists vs. Lamar

2024-25 (THREE RIVERS COLLEGE)

- Averaged 7.3 PPG, shot 38% from the field, 22.8% from behind the arc and shot 66.7% from the free throw line
- Recorded 122 total rebounds, good for an average of 3.7 per game
- Added 83 steals (2.5/game), along with 72 assists, and four blocks
- Scored a career high 21 points on 60% shooting while also recording a career-high nine steals in the win vs. Vincennes University
- Posted 10 games of four or more steals during the season

11 KESHUNTI NICHOLS

Forward | Gr. | 6-0 | Pearl, Miss. | Charleston Southern

SEASON HIGHS

Points..... 12, two times, last vs. Louisiana Tech (11/7/2025)
Minutes..... 27, vs. Grambling State (11/11/2025)
Field Goals..... 6, vs. Louisiana Tech (11/7/2025)
3-PT Field Goals..... 1, vs. Eastern Michigan (11/3/2025)
Free Throws..... 3, two times, last vs. Grambling State (11/11/2025)
Rebounds..... 6, two times, last vs. Lamar (11/23/2025)
Assists..... 2, vs. Arkansas-Pine Bluff (11/16/2025)
Blocks..... 1, three times, last vs. Lamar (11/23/2025)
Steals..... 4, vs. Louisiana Tech (11/7/2025)

CAREER HIGHS

Points..... 25, at Presbyterian (1/22/2025)
Minutes..... 29, two times, last vs. USC Upstate (1/29/2025)
Field Goals..... 10, at Presbyterian (1/22/2025)
3-PT Field Goals..... 1, six times, last vs. Eastern Michigan (11/3/2025)
Free Throws..... 6, at Gardner-Webb (2/14/2024)
Rebounds..... 9, at Radford (2/28/2024)
Assists..... 4, at South Carolina (12/19/2024)
Blocks..... 3, vs. USC Upstate (1/29/2025)
Steals..... 4, vs. Louisiana Tech (11/7/2025)



CAREER STATISTICS

Season	GP	GS	MIN	M/G	FGM	FGA	FG%	3FG	3FGA	3FG%	FTM	FTA	FT%	OR	DR	TR	R/G	PF	AST	TO	STL	BLK	PTS	AVG
2023-24	29	3	558	19.2	89	174	.511	2	10	.200	41	66	.621	56	69	125	4.3	51	18	52	31	13	221	7.6
2024-25	26	13	610	23.5	99	207	.478	3	13	.231	33	52	.635	55	65	120	4.6	58	31	67	24	20	234	9.0
2025-26	6	0	132	22.0	21	55	.382	1	7	.143	7	11	.636	14	16	30	5.0	17	4	16	10	3	50	8.3
TOTAL	61	16	1304	21.4	209	436	.479	6	30	.200	81	129	.628	125	150	275	4.5	126	53	135	65	36	505	8.3

2025-26 (ULM)

- Scored 12 points vs. Eastern Michigan, shooting 4-for-8 from the field with five rebounds in her debut
- Established a new career high with four steals in the win vs. Louisiana Tech

2024-25 (CHARLESTON SOUTHERN)

- Played in 26 games total, making 13 starts
- Averaged 9 PPG, shot 47.8% from the field, 23.1% from beyond the arc, and 63.5% from the free throw line
- Recorded 120 total rebounds, good for an average of 4.6 per game
- Added 31 assists, 24 steals, and 20 blocks
- Shot 10 for 16 from the field on her way to a career high 25 points at Presbyterian

FAST FACTS

- Daughter of Monica and Bobby Nichols
- Has four siblings

13 ABBY LEAHY

Guard | Jr. | 6-1 | Colorado Springs, Col. | Northeastern Junior College

SEASON HIGHS

Points..... 5, vs. Eastern Michigan (11/3/2025)
Minutes..... 17, vs. Eastern Michigan (11/3/2025)
Field Goals..... 1, vs. Eastern Michigan (11/3/2025)
3-PT Field Goals..... 1, vs. Eastern Michigan (11/3/2025)
Free Throws..... 2, vs. Eastern Michigan (11/3/2025)
Rebounds..... 4, vs. Eastern Michigan (11/3/2025)
Assists..... 1, vs. Eastern Michigan (11/3/2025)
Blocks..... 2, vs. Eastern Michigan (11/3/2025)
Steals..... 1, two times, last vs. Sam Houston (11/20/2025)

CAREER HIGHS

Points..... 5, vs. Eastern Michigan (11/3/2025)
Minutes..... 17, vs. Eastern Michigan (11/3/2025)
Field Goals..... 1, vs. Eastern Michigan (11/3/2025)
3-PT Field Goals..... 1, vs. Eastern Michigan (11/3/2025)
Free Throws..... 2, vs. Eastern Michigan (11/3/2025)
Rebounds..... 4, vs. Eastern Michigan (11/3/2025)
Assists..... 1, vs. Eastern Michigan (11/3/2025)
Blocks..... 2, vs. Eastern Michigan (11/3/2025)
Steals..... 1, two times, last vs. Sam Houston (11/20/2025)



CAREER STATISTICS

Season	GP	GS	MIN	M/G	FGM	FGA	FG%	3FG	3FGA	3FG%	FTM	FTA	FT%	OR	DR	TR	R/G	PF	AST	TO	STL	BLK	PTS	AVG
2025-26	6	0	41	6.9	1	3	.333	1	2	.500	2	2	1.000	5	0	5	0.8	1	1	5	2	2	5	0.8
TOTAL	6	0	41	6.9	1	3	.333	1	2	.500	2	2	1.000	5	0	5	0.8	1	1	5	2	2	5	0.8

2025-26 (ULM)

- Scored five points, added four offensive rebounds and two blocks in her debut vs. Eastern Michigan
- Nabbed a steal at Sam Houston

2024-25 (NORTHEASTERN JUNIOR COLLEGE)

- Finished second on the team in scoring with an average of 13.7 PPG, shot 33.3% from the field, 26.3% from beyond the arc and 73.8% from the free throw line
- Averaged 8.1 rebounds per game, good for second on the team
- Tied for second on the team averaging 1.7 steals per game, also averaged 2.3 assists per game
- Registered five games of 20 points or more, including a career-high 25 points at Western Wyoming CC
- Posted nine double-doubles, one of which featured a career-high 18 rebounds to go with 18 points at Eastern Wyoming College

FAST FACTS

- Daughter of Kelly and Matthew Leahy
- Has five siblings

15 KATELYN CHOMKO

Guard | Sr. | 5-7 | Houston, Texas | Robert Morris

SEASON HIGHS

Points..... 9, vs. Arkansas-Pine Bluff (11/16/2025)
 Minutes..... 4 two times, last vs. Sam Houston (11/20/2025)
 Field Goals..... 3, vs. Arkansas-Pine Bluff (11/16/2025)
 3-PT Field Goals..... 3, vs. Arkansas-Pine Bluff (11/16/2025)
 Free Throws.....
 Rebounds..... 2, vs. Arkansas-Pine Bluff (11/16/2025)
 Assists.....
 Blocks.....
 Steals.....

CAREER HIGHS

Points..... 15, vs. Youngstown State (2/26/2025)
 Minutes..... 33, at Northern Kentucky (1/8/2025)
 Field Goals..... 5, two times, last vs. Youngstown State (2/26/2025)
 3-PT Field Goals..... 5, two times, last vs. Youngstown State (2/26/2025)
 Free Throws..... 2, four times, last at Wright State (3/1/2025)
 Rebounds..... 4, three times, last vs. Youngstown State (2/26/2025)
 Assists..... 2, two times, last at Cleveland State (2/22/2025)
 Blocks..... 1, at Milwaukee (2/6/2025)
 Steals..... 2, three times, last at Wright State (3/1/2025)



CAREER STATISTICS

Season	GP	GS	MIN	M/G	FGM	FGA	FG%	3FG	3FGA	3FG%	FTM	FTA	FT%	OR	DR	TR	R/G	PF	AST	TO	STL	BLK	PTS	AVG
2024-25	22	4	298	13.5	28	90	.311	27	76	.355	8	10	.800	8	27	35	1.6	11	7	25	13	1	91	4.1
2025-26	5	0	12	2.3	3	7	.429	3	7	.429	--	--	--	1	1	2	0.4	2	0	1	0	0	9	1.8
TOTAL	27	4	311	11.5	31	97	.320	30	83	.361	8	10	.800	9	28	37	1.4	13	7	26	13	1	100	3.7

2025-26 (ULM)

- Made her ULM debut vs. Eastern Michigan
- Knocked down three of her five three-point attempts for a season-high nine points vs. Arkansas-Pine Bluff

2024-25 (ROBERT MORRIS)

- Appeared in 22 games, making four starts
- Averaged 4.1 PPG, shot 31.1% from the field, 35.5% from beyond the arc and 80% from the free throw line
- Posted totals of 35 rebounds, 13 steals and seven assists
- Her 27 3-point field goals were second best on the team, as was her three-point percentage
- Scored a season high 15 points in back to back games at Cleveland State and vs. Youngstown State, shot 10-for-20 from 3-point range across the two contests

20 ROGE'NE' HILLARD

Center | Jr. | 6-3 | Hazlehurst, Miss. | Pearl River CC

SEASON HIGHS

Points.....
 Minutes.....
 Field Goals.....
 3-PT Field Goals.....
 Free Throws.....
 Rebounds.....
 Assists.....
 Blocks.....
 Steals.....

CAREER HIGHS

Points.....
 Minutes.....
 Field Goals.....
 3-PT Field Goals.....
 Free Throws.....
 Rebounds.....
 Assists.....
 Blocks.....
 Steals.....



2024-25 (PEARL RIVER CC)

- Averaged 5.2 points per game, shot 53.2% from the field and 58.5% from the free throw line
- Grabbed a total of 127 rebounds, good for an average of 5.5 per game
- Registered a total of 28 blocks (1.2/game), 18 assists and 17 steals
- Recorded her first career double-digit scoring effort with 12 points in a win at Meridian CC, knocking down five of her six shots
- Finished the season with two games of double-digit rebounding, including a career-high of 11 at Northwest Mississippi CC

FAST FACTS

- Daughter of Dinetta and Roger Hillard
- Sister of Deirdre and Triesha Stovall, Durrod, Joses, Darius and Irieana Mitchell and Roderick and Quantina Hillard

24 ASJAH INNISS

Guard | Gr. | 5-9 | Suwanee, Ga. | App State

SEASON HIGHS

Points.....12, vs. Louisiana Tech (11/7/2025)
Minutes.....32, vs. Sam Houston (11/20/2025)
Field Goals.....4, vs. Eastern Michigan (11/3/2025)
3-PT Field Goals.....2, two times, last vs. Arkansas-Pine Bluff (11/16/2025)
Free Throws.....6, vs. Louisiana Tech (11/7/2025)
Rebounds.....6, vs. Eastern Michigan (11/3/2025)
Assists.....5, vs. Lamar (11/23/2025)
Blocks.....1, vs. Louisiana Tech (11/7/2025)
Steals.....3, vs. Eastern Michigan (11/3/2025)

CAREER HIGHS

Points.....15, vs. Saint Joseph's (1/4/2023)
Minutes.....40, vs. Loyola Chicago (3/2/2024)
Field Goals.....6, two times, last vs. Coppin State (12/9/2023)
3-PT Field Goals.....4, at St. Bonaventure (1/14/2024)
Free Throws.....6, vs. Louisiana Tech (11/7/2025)
Rebounds.....11 vs. Hampton (12/16/2023)
Assists.....7, two times, last vs. Wilmington (DE) (12/13/2022)
Blocks.....2, two times, last vs. Loyola Chicago (3/2/2024)
Steals.....6, vs. Averett (1/3/2021)



CAREER STATISTICS

Season	GP	GS	MIN	M/G	FGM	FGA	FG%	3FG	3FGA	3FG%	FTM	FTA	FT%	OR	DR	TR	R/G	PF	AST	TO	STL	BLK	PTS	AVG
2020-21	13	0	180	13.8	14	56	.250	0	9	.000	11	15	.733	16	26	42	3.2	20	26	23	13	1	39	3.0
2022-23	28	28	591	21.1	60	167	.359	12	49	.245	21	30	.700	18	61	79	2.8	47	56	52	29	1	153	5.5
2023-24	28	26	832	29.7	58	186	.312	30	84	.357	22	33	.667	21	105	126	4.5	61	64	68	24	6	168	6.0
2024-25	28	6	412	14.7	42	108	.389	12	44	.273	13	16	.813	6	42	48	1.7	35	36	37	12	1	109	3.9
2025-26	6	6	161	26.8	15	48	.313	7	22	.318	14	19	.737	9	12	21	3.5	15	16	14	11	1	51	8.5
TOTAL	103	68	2171	21.1	189	565	.335	61	208	.293	81	113	.717	70	246	316	3.1	178	198	194	89	10	520	5.0

2025-26 (ULM)

- Scored a season-high 12 points, added four rebounds and two assists in the win vs. Louisiana Tech
- Recorded a team-leading five assists to go with three points vs. Lamar

2024-25 (APP STATE)

- Averaged 3.9 PPG, shot 38.9% from the field, 27.3% from beyond the arc and 81.3% from the free throw line
- Added 48 rebounds, 36 assists, 12 steals and a block
- Recorded two games of double-digit scoring, which included 12 points at UNCG and 11 points at Vanderbilt
- Swiped a season-high three steals also on the road at Wofford

FAST FACTS

- Daughter of Africa Dangerfield and Prince Inniss
- Has three siblings

25 MARCAVIA SHAVERS

Center | Gr. | 6-2 | Biloxi, Miss. | Saint Louis

SEASON HIGHS

Points.....12, two times, last vs. Lamar (11/23/2025)
Minutes.....29, vs. Lamar (11/23/2025)
Field Goals.....5, two times, last vs. Lamar (11/23/2025)
3-PT Field Goals.....
Free Throws.....2, four times, last vs. Lamar (11/23/2025)
Rebounds.....12, vs. Sam Houston (11/20/2025)
Assists.....1, two times, last vs. Lamar (11/23/2025)
Blocks.....
Steals.....2, two times, last vs. Lamar (11/23/2025)

CAREER HIGHS

Points.....15, vs. Dayton (1/12/2024)
Minutes.....30, vs. Saint Joseph's (1/9/2024)
Field Goals.....7, two times, last vs. Dayton (1/12/2024)
3-PT Field Goals.....
Free Throws.....4, at George Washington (1/20/2024)
Rebounds.....20, at St. Bonaventure (1/8/2025)
Assists.....1, 15 times, last vs. Lamar (11/23/2025)
Blocks.....1, six times, last vs. UMass (1/2/2025)
Steals.....3, vs. Drake (11/9/2023)



CAREER STATISTICS

Season	GP	GS	MIN	M/G	FGM	FGA	FG%	3FG	3FGA	3FG%	FTM	FTA	FT%	OR	DR	TR	R/G	PF	AST	TO	STL	BLK	PTS	AVG
2023-24	40	26	466	11.7	72	143	.503	0	0	.000	21	35	.600	51	62	113	2.8	75	6	26	8	3	165	4.1
2024-25	33	12	392	11.9	57	119	.491	0	0	.000	14	29	.483	39	78	117	3.5	52	7	37	10	3	128	3.9
2025-26	6	6	134	22.3	23	45	.511	0	0	.000	8	14	.571	14	24	38	6.3	20	2	10	5	0	54	9.0
TOTAL	79	44	985	12.5	152	304	.500	0	0	.000	43	78	.551	104	164	268	3.4	147	15	73	23	6	347	4.4

2025-26 (ULM)

- Established a season high with 12 points while adding seven rebounds in the win vs. Grambling State
- Recorded a season-high 12 rebounds at Sam Houston
- Saw 12 points and pulled down nine boards vs. Lamar

2024-25 (SAINT LOUIS)

- Averaged 3.9 PPG, shot 49.1% from the field and 48.3% from the free throw line
- Posted a total of 78 rebounds, good for an average of 3.5 per game
- Added 10 steals, seven assists and three blocks
- Scored a season high 10 points on two occasions vs. Ohio and George Mason, where she also grabbed 10 boards for a double-double
- Dominated the boards at St. Bonaventure, securing a career-high 20 rebounds, including seven offensive rebounds

FAST FACTS

- Daughter of Quadrika Sanders
- Has three siblings

35 ASIA BARCLAY

Forward | Gr. | 6-0 | Anniston, Ala. | Jacksonville State

SEASON HIGHS

Points.....8, vs. Eastern Michigan (11/3/2025)
 Minutes.....26, two times, last vs. Arkansas-Pine Bluff (11/16/2025)
 Field Goals.....3, three times, last vs. Lamar (11/23/2025)
 3-PT Field Goals.....
 Free Throws.....2, two times, last vs. Arkansas-Pine Bluff (11/16/2025)
 Rebounds.....7, vs. Grambling State (11/11/2025)
 Assists.....2, vs. Grambling State (11/11/2025)
 Blocks.....1, vs. Lamar (11/23/2025)
 Steals.....2, vs. Arkansas-Pine Bluff (11/16/2025)

CAREER HIGHS

Points.....16, two times, last vs. UTEP (1/23/2025)
 Minutes.....35, vs. UTEP (1/23/2025)
 Field Goals.....8, vs. UAB (11/20/2024)
 3-PT Field Goals.....
 Free Throws.....6, vs. Kennesaw St. (1/4/2025)
 Rebounds.....13, two times, last vs. La Tech (2/15/2025)
 Assists.....3, two times, last at College of Charleston (12/29/2023)
 Blocks.....2, three times, last vs. Sam Houston St. (2/13/2025)
 Steals.....3, two times, last vs. New Mexico St. (2/3/2024)



CAREER STATISTICS

Season	GP	GS	MIN	M/G	FGM	FGA	FG%	3FG	3FGA	3FG%	FTM	FTA	FT%	OR	DR	TR	R/G	PF	AST	TO	STL	BLK	PTS	AVG
2023-24	28	2	420	15.0	44	104	.423	0	0	.000	32	46	.696	41	80	121	4.3	35	21	35	26	5	120	4.3
2024-25	29	11	561	19.3	79	159	.497	0	1	.000	28	47	.596	53	107	160	5.5	65	13	38	30	8	186	6.4
2025-26	6	6	140	23.3	10	22	.455	0	1	.000	5	8	.625	2	18	20	3.3	11	4	9	2	1	25	4.2
TOTAL	63	19	1126	17.9	133	285	.467	0	2	.000	65	101	.644	96	205	301	4.8	111	38	82	58	14	331	5.3

2025-26 (ULM)

- Averaging 3.8 points per game, has shot 7-for-17 from the field
- Has grabbed 19 rebounds, good for an average of 3.8 per game
- Scored eight points and added four rebounds in her ULM debut vs. Eastern Michigan
- Pulled down a season-high seven rebounds vs. Grambling State

2024-25 (JACKSONVILLE STATE)

- Played in 29 games total, making 11 starts
- Averaged 6.4 PPG, shot 49.7% from the field and shot 59.6% from the free throw line
- Recorded 160 total rebounds, good for an average of 5.5 per game
- Scored a season-high 16 points on two occasions vs. UAB and at Sam Houston
- Posted two double-doubles, with each including a season-high 13 rebounds vs. Sewanee and Louisiana Tech

FAST FACTS

- Daughter of Angela Swink and Unray Barclay
- Has three brothers and three sisters

44 NAKIYAH MAYS-PRINCE

Guard | Sr. | 5-5 | Chicago, Ill. | Georgia Southern

SEASON HIGHS

Points.....12, vs. Eastern Michigan (11/3/2025)
 Minutes.....28, vs. Grambling State (11/11/2025)
 Field Goals.....5, vs. Grambling State (11/11/2025)
 3-PT Field Goals.....2, vs. Eastern Michigan (11/3/2025)
 Free Throws.....4, two times, last vs. Arkansas-Pine Bluff (11/16/2025)
 Rebounds.....5, vs. Louisiana Tech (11/7/2025)
 Assists.....7, vs. Louisiana Tech (11/7/2025)
 Blocks.....
 Steals.....3, vs. Grambling State (11/11/2025)

CAREER HIGHS

Points.....20 vs. Old Dominion (2/28/2025)
 Minutes.....43 vs. Georgia St. (1/18/2025)
 Field Goals.....7 vs. Old Dominion (2/28/2025)
 3-PT Field Goals.....3 three times, last at Rutgers (11/30/2024)
 Free Throws.....6 at North Florida (11/9/2024)
 Rebounds.....10 at Delaware St. (12/21/2023)
 Assists.....11 vs. Hofstra (12/30/2022)
 Blocks.....2 three times, last at Old Dominion (2/22/2025)
 Steals.....6 two times, last vs. South Alabama (2/15/2025)



CAREER STATISTICS

Season	GP	GS	MIN	M/G	FGM	FGA	FG%	3FG	3FGA	3FG%	FTM	FTA	FT%	OR	DR	TR	R/G	PF	AST	TO	STL	BLK	PTS	AVG
2022-23	28	4	684	24.4	66	176	.375	14	47	.298	34	50	.680	29	65	94	3.4	80	96	88	39	1	180	6.4
2023-24	28	7	594	21.2	47	125	.376	9	37	.243	27	32	.844	24	63	87	3.1	61	74	67	33	5	130	4.6
2024-25	33	15	881	26.7	83	195	.426	28	81	.346	50	69	.725	27	52	79	2.4	62	82	68	56	8	244	7.4
2025-26	6	0	141	23.5	14	46	.304	3	15	.200	11	17	.647	6	9	15	2.5	16	28	18	9	0	42	7.0
TOTAL	95	26	2301	24.2	210	542	.387	54	180	.300	122	168	.726	86	189	275	2.9	219	280	241	137	14	596	6.3

2025-26 (ULM)

- Scored 10 points, added a season-high seven assists and five rebounds in the win vs. Louisiana Tech

2024-25 (GEORGIA SOUTHERN)

- Averaged 7.4 points per game, shot 42.6% from the field, 34.6% from beyond the arc and 72.5% from the free throw line
- Recorded 79 rebounds, good for an average of 2.4 per game
- Added 82 assists, 56 steals (1.7/game) and eight blocks
- Scored in double figures eight times, including a career-high 20 points vs. Old Dominion
- Tied her career high of six steals vs. South Alabama

FAST FACTS

- Daughter of Lalita Mays and Zachary Prince



SCOTTY FLETCHER

FIRST SEASON AS ULM HEAD COACH (5-1)

FIRST SEASON OVERALL (5-1)

Scotty Fletcher was named the 11th head coach of ULM Women's Basketball on March 28, 2025.

Fletcher comes to ULM after leading Pearl River to a historic 25-3 record, the fewest losses recorded in program history for a single season. Named the MACCC Coach of the Year for two consecutive years, he has led Pearl River to four-straight 20-win seasons and three MACCC regular season championships in his 10 years at the helm. In 2024, Fletcher led the Wildcats to their first at-large bid to the NJCAA National Tournament since 2003.

Prior to his time at Pearl River, Fletcher held two separate stints at William Carey University from 2008-09 and from 2011-15 as the assistant men's basketball coach. While at William Carey, Fletcher guided the Crusaders from a last-place finish in the Southern States Athletic Conference to a perfect 21-0 in conference play in 2014, the best season in program history. William Carey posted a 74-20 record across four seasons and captured a trio of SSAC regular season championships, including a SSAC Tournament title in 2014 during Fletcher's tenure as an assistant. As a recruiter, Fletcher signed seven players who were named All-SSAC and four who were selected as NAIA All-Americans. In addition to his coaching duties, he managed the team's budget and spearheaded fundraising campaigns, as well as oversaw the recruiting efforts during his time with the Crusaders.

In 2009, Fletcher accepted a position as an assistant men's basketball coach at Jacksonville State University, helping send the Gamecocks to their first Ohio Valley Conference Tournament appearance in five seasons. During his two seasons at Jacksonville State, he was the youngest assistant in the OVC and one of the youngest recruiters in Division I basketball.

In his first season as an assistant at William Carey from 2008-09, Fletcher helped the Crusaders earn their first-ever win over a Division I program.

Fletcher began his coaching career as a graduate assistant at Ole Miss in 2007 under head coach Andy Kennedy. In the 2007-08 season, he helped guide the Rebels to a 24-11 record and a Final Four run in the NIT.

As a player, Fletcher started his collegiate career at Pearl River and helped the Wildcats claim the 2002-03 state championship under head coach Richard Mathis. He went on to play his final two seasons at William Carey from 2005-07, averaging 9.4 points per game and leading the team with 66 triples. Fletcher finished his playing career with 118 three-pointers, the fifth-most made by a Crusader, and a 38.9 three-point percentage.

Fletcher holds a bachelor's degree in physical education and recreation from William Carey, graduating in 2007. He then went on to complete a master's degree in education at William Carey in 2009.

The Petal, Miss. native is a graduate of Petal High School. Fletcher resides in Monroe with his wife, Lori, and daughter, Kaitlyn.

THE FLETCHER FILE

Hometown.....Petal, Miss.
College.....William Carey, 2007
Family.....Wife, Lori
.....Daughter, Kaitlyn

COACHING HISTORY

2025-present: ULM

Head Coach

2015-25: Pearl River CC

Head Coach

2011-15: William Carey

Assistant Coach, Men's Basketball

2009-11: Jacksonville State

Assistant Coach, Men's Basketball

2008-09: William Carey

Assistant Coach, Men's Basketball

2007-08: Ole Miss

Graduate Asst., Men's Basketball



2025-26 ULM Women's Basketball
Overall Team Statistics
All games

Page 1/1
as of Nov 23, 2025

Team Statistics

	ULM	OPP
Scoring	399	342
Points per game	66.5	57.0
Scoring margin	+9.5	-
Field goals-att	143-345	117-323
Field goal pct	.414	.362
3 point fg-att	31-87	33-117
3-point FG pct	.356	.282
3-pt FG made per game	5.2	5.5
Free throws-att	82-126	75-115
Free throw pct	.651	.652
F-Throws made per game	13.7	12.5
Rebounds	238	183
Rebounds per game	39.7	30.5
Rebounding margin	+9.2	-
Assists	77	65
Assists per game	12.8	10.8
Turnovers	122	135
Turnovers per game	20.3	22.5
Turnover margin	+2.2	-
Assist/turnover ratio	0.6	0.5
Steals	65	53
Steals per game	10.8	8.8
Blocks	9	16
Blocks per game	1.5	2.7
Winning streak	1	-
Home win streak	5	-
Attendance	6279	432
Home games-Avg/Game	5-1256	1-432
Neutral site-Avg/Game	-	0-0

Score by Periods

Team	1st	2nd	3rd	4th	OT	TOT
ULM	95	109	90	105	0	399
Opponents	79	95	92	76	0	342



2025-26 ULM Women's Basketball
Player Highs Analysis
All games

Page 1/3
as of Nov 23, 2025

ULM - Individual Game Highs

POINTS	25		Jazmine Jackson vs Lamar University (11/23/2025)
	16		Jazmine Jackson vs Ark.-Pine Bluff (11/16/2025)
	16		J'Mani Ingram vs Grambling (11/11/2025)
	16		Kamille Brown vs Louisiana Tech (11/07/2025)
	14		J'Mani Ingram vs Lamar University (11/23/2025)
FIELD GOALS MADE	7		Jazmine Jackson vs Lamar University (11/23/2025)
	6		J'Mani Ingram vs Lamar University (11/23/2025)
	6		J'Mani Ingram vs Grambling (11/11/2025)
	6		Keshunti Nichols vs Louisiana Tech (11/07/2025)
FIELD GOAL ATTEMPTS	12		Marcavia Shavers vs Lamar University (11/23/2025)
	12		Keshunti Nichols vs Louisiana Tech (11/07/2025)
FIELD GOAL PERCENTAGE (min 5 made)	.833	(5-6)	Kamille Brown vs Louisiana Tech (11/07/2025)
	.667	(6-9)	J'Mani Ingram vs Lamar University (11/23/2025)
	.667	(6-9)	J'Mani Ingram vs Grambling (11/11/2025)
3 PT FG MADE	5		Jazmine Jackson vs Lamar University (11/23/2025)
	4		Jazmine Jackson vs Ark.-Pine Bluff (11/16/2025)
3 PT FG ATTEMPTS	7		Jazmine Jackson vs Ark.-Pine Bluff (11/16/2025)
	6		Jazmine Jackson vs Lamar University (11/23/2025)
	6		Asjah Inniss vs Ark.-Pine Bluff (11/16/2025)
3 PT FG PERCENTAGE (min 2 made)	1.000	(2-2)	Nailea Nicholas vs Ark.-Pine Bluff (11/16/2025)
	.833	(5-6)	Jazmine Jackson vs Lamar University (11/23/2025)
FREE THROWS MADE	6		Jazmine Jackson vs Lamar University (11/23/2025)
	6		Asjah Inniss vs Louisiana Tech (11/07/2025)
FREE THROW ATTEMPTS	7		Jazmine Jackson vs Lamar University (11/23/2025)
	6		Nakiyah Mays-Prince vs Ark.-Pine Bluff (11/16/2025)
	6		J'Mani Ingram vs Grambling (11/11/2025)
	6		Marcavia Shavers vs Grambling (11/11/2025)
	6		Asjah Inniss vs Louisiana Tech (11/07/2025)
	6		Kamille Brown vs Louisiana Tech (11/07/2025)
	6		Keshunti Nichols vs Eastern Mich. (11/03/2025)
FREE THROW PERCENTAGE (min 3 made)	1.000	(6-6)	Asjah Inniss vs Louisiana Tech (11/07/2025)
	1.000	(4-4)	Nakiyah Mays-Prince vs Eastern Mich. (11/03/2025)
REBOUNDS	12		Marcavia Shavers at Sam Houston (11/20/2025)
	9		Marcavia Shavers vs Lamar University (11/23/2025)
ASSISTS	7		Nakiyah Mays-Prince vs Louisiana Tech (11/07/2025)
	6		Nakiyah Mays-Prince vs Ark.-Pine Bluff (11/16/2025)
STEALS	5		Kamille Brown vs Grambling (11/11/2025)
	4		Keshunti Nichols vs Louisiana Tech (11/07/2025)
BLOCKED SHOTS	2		Abby Leahy vs Eastern Mich. (11/03/2025)
	1		Asia Barclay vs Lamar University (11/23/2025)
	1		Keshunti Nichols vs Lamar University (11/23/2025)
	1		Keshunti Nichols vs Grambling (11/11/2025)
	1		Kamille Brown vs Grambling (11/11/2025)
	1		J'Mani Ingram vs Louisiana Tech (11/07/2025)
	1		Asjah Inniss vs Louisiana Tech (11/07/2025)
	1		Keshunti Nichols vs Eastern Mich. (11/03/2025)
TURNOVERS	7		J'Mani Ingram at Sam Houston (11/20/2025)
	5		Asjah Inniss at Sam Houston (11/20/2025)
	5		Nakiyah Mays-Prince vs Grambling (11/11/2025)
	5		J'Mani Ingram vs Louisiana Tech (11/07/2025)



2025-26 ULM Women's Basketball
Player Highs Analysis
All games

Page 3/3
as of Nov 23, 2025

Opponent - Individual Game Highs

POINTS	24		Sisi Eleko vs Eastern Mich. (11/03/2025)
	22		Fanta Kone at Sam Houston (11/20/2025)
	19		Shaniah Nunn vs Grambling (11/11/2025)
	16		Alexia Weaver vs Louisiana Tech (11/07/2025)
	15		Peyton Hill vs Eastern Mich. (11/03/2025)
FIELD GOALS MADE	9		Sisi Eleko vs Eastern Mich. (11/03/2025)
	8		Fanta Kone at Sam Houston (11/20/2025)
FIELD GOAL ATTEMPTS	19		Sisi Eleko vs Eastern Mich. (11/03/2025)
	15		Kamryn Wilson vs Lamar University (11/23/2025)
FIELD GOAL PERCENTAGE (min 5 made)	.727	(8-11)	Fanta Kone at Sam Houston (11/20/2025)
	.556	(5-9)	Jacei Denley vs Lamar University (11/23/2025)
3 PT FG MADE	3		Alexia Weaver vs Louisiana Tech (11/07/2025)
	3		Oliwia Pelka vs Eastern Mich. (11/03/2025)
3 PT FG ATTEMPTS	8		Monica Marsh vs Grambling (11/11/2025)
	7		Kamryn Wilson vs Lamar University (11/23/2025)
	7		Annika Corcoran at Sam Houston (11/20/2025)
3 PT FG PERCENTAGE (min 2 made)	1.000	(2-2)	Jailah Pelly vs Ark.-Pine Bluff (11/16/2025)
	.750	(3-4)	Oliwia Pelka vs Eastern Mich. (11/03/2025)
FREE THROWS MADE	8		Peyton Hill vs Eastern Mich. (11/03/2025)
	7		Shaniah Nunn vs Grambling (11/11/2025)
FREE THROW ATTEMPTS	13		Shaniah Nunn vs Grambling (11/11/2025)
	8		Brooklyn Thrash vs Eastern Mich. (11/03/2025)
	8		Peyton Hill vs Eastern Mich. (11/03/2025)
FREE THROW PERCENTAGE (min 3 made)	1.000	(8-8)	Peyton Hill vs Eastern Mich. (11/03/2025)
	1.000	(4-4)	Indiya Bowen vs Ark.-Pine Bluff (11/16/2025)
REBOUNDS	14		Shaniah Nunn vs Grambling (11/11/2025)
	8		Solenne Olenga vs Lamar University (11/23/2025)
ASSISTS	5		Ainhua Cea vs Eastern Mich. (11/03/2025)
	4		Khaniah Gardner vs Ark.-Pine Bluff (11/16/2025)
	4		Paris Bradley vs Louisiana Tech (11/07/2025)
	4		Peyton Hill vs Eastern Mich. (11/03/2025)
STEALS	5		Deborah Ogayemi at Sam Houston (11/20/2025)
	4		Annika Corcoran at Sam Houston (11/20/2025)
	4		Fanta Kone at Sam Houston (11/20/2025)
BLOCKED SHOTS	2		Shaniah Nunn vs Grambling (11/11/2025)
	2		Deborrah Seitu-Redmon vs Grambling (11/11/2025)
	2		Joy Madison-Key vs Louisiana Tech (11/07/2025)
TURNOVERS	6		Indiya Bowen vs Ark.-Pine Bluff (11/16/2025)
	6		Shaniah Nunn vs Grambling (11/11/2025)
FOULS	5		Shaila Forman vs Lamar University (11/23/2025)
	5		Briontanay Marshall vs Ark.-Pine Bluff (11/16/2025)
	5		Zaria Johnson vs Grambling (11/11/2025)
	5		Joy Madison-Key vs Louisiana Tech (11/07/2025)



2025-26 ULM Women's Basketball
Category Leaders
All games

Page 1/3
as of Nov 23, 2025

Points

##	Player	G	Pts	Pts/G
7	Ingram, J'Mani	6	63	10.5
25	Shavers, Marcavia	6	54	9.0
24	Inniss, Asjah	6	51	8.5
0	Jackson, Jazmine	6	50	8.3
11	Nichols, Keshunti	6	50	8.3
44	Mays-Prince, Nakiyah	6	42	7.0
35	Barclay, Asia	6	25	4.2
9	Brown, Kamille	6	23	3.8
2	Gasaway, Marissa	6	15	2.5
3	Nicholas, Nailea	6	12	2.0
15	Chomko, Katelyn	5	9	1.8
13	Leahy, Abby	6	5	0.8

Scoring Average

##	Player	G	Pts	Pts/G
7	Ingram, J'Mani	6	63	10.5
25	Shavers, Marcavia	6	54	9.0
24	Inniss, Asjah	6	51	8.5
0	Jackson, Jazmine	6	50	8.3
11	Nichols, Keshunti	6	50	8.3
44	Mays-Prince, Nakiyah	6	42	7.0
35	Barclay, Asia	6	25	4.2
9	Brown, Kamille	6	23	3.8
2	Gasaway, Marissa	6	15	2.5
3	Nicholas, Nailea	6	12	2.0
15	Chomko, Katelyn	5	9	1.8
13	Leahy, Abby	6	5	0.8

Field Goal Percentage

##	Player	FG	Att	Pct
3	Nicholas, Nailea	5	9	.556
25	Shavers, Marcavia	23	45	.511
7	Ingram, J'Mani	24	48	.500
0	Jackson, Jazmine	15	30	.500
35	Barclay, Asia	10	22	.455
15	Chomko, Katelyn	3	7	.429
9	Brown, Kamille	7	17	.412
11	Nichols, Keshunti	21	55	.382
2	Gasaway, Marissa	5	15	.333
13	Leahy, Abby	1	3	.333
24	Inniss, Asjah	15	48	.313
44	Mays-Prince, Nakiyah	14	46	.304

Field Goal Attempts

##	Player	G	Att	Att/G
11	Nichols, Keshunti	6	55	9.2
7	Ingram, J'Mani	6	48	8.0
24	Inniss, Asjah	6	48	8.0
44	Mays-Prince, Nakiyah	6	46	7.7
25	Shavers, Marcavia	6	45	7.5

Field Goals Made

##	Player	G	Made	Made/G
7	Ingram, J'Mani	6	24	4.0
25	Shavers, Marcavia	6	23	3.8
11	Nichols, Keshunti	6	21	3.5
24	Inniss, Asjah	6	15	2.5
0	Jackson, Jazmine	6	15	2.5

3-Point FG Percentage

##	Player	3FG	Att	Pct
0	Jackson, Jazmine	10	18	.556
13	Leahy, Abby	1	2	.500
9	Brown, Kamille	3	7	.429
15	Chomko, Katelyn	3	7	.429
3	Nicholas, Nailea	2	5	.400
2	Gasaway, Marissa	1	3	.333
24	Inniss, Asjah	7	22	.318
44	Mays-Prince, Nakiyah	3	15	.200
11	Nichols, Keshunti	1	7	.143

3-Point FG Attempts

##	Player	G	Att	Att/G
24	Inniss, Asjah	6	22	3.7
0	Jackson, Jazmine	6	18	3.0
44	Mays-Prince, Nakiyah	6	15	2.5
11	Nichols, Keshunti	6	7	1.2
9	Brown, Kamille	6	7	1.2

3-Point FG Made

##	Player	G	Made	Made/G
0	Jackson, Jazmine	6	10	1.7
24	Inniss, Asjah	6	7	1.2
44	Mays-Prince, Nakiyah	6	3	0.5
9	Brown, Kamille	6	3	0.5
15	Chomko, Katelyn	5	3	0.6



2025-26 ULM Women's Basketball
Category Leaders
All games

Page 2/3
as of Nov 23, 2025

Free Throw Percentage

##	Player	Made	Att	Pct
13	Leahy, Abby	2	2	1.000
0	Jackson, Jazmine	10	13	.769
24	Inniss, Asjah	14	19	.737
7	Ingram, J'Mani	15	23	.652
44	Mays-Prince, Nakiyah	11	17	.647
11	Nichols, Keshunti	7	11	.636
35	Barclay, Asia	5	8	.625
25	Shavers, Marcavia	8	14	.571
9	Brown, Kamille	6	11	.545
2	Gasaway, Marissa	4	8	.500

Free Throw Attempts

##	Player	G	Att	Att/G
7	Ingram, J'Mani	6	23	3.8
24	Inniss, Asjah	6	19	3.2
44	Mays-Prince, Nakiyah	6	17	2.8
25	Shavers, Marcavia	6	14	2.3
0	Jackson, Jazmine	6	13	2.2

Free Throws Made

##	Player	G	Made	Made/G
7	Ingram, J'Mani	6	15	2.5
24	Inniss, Asjah	6	14	2.3
44	Mays-Prince, Nakiyah	6	11	1.8
0	Jackson, Jazmine	6	10	1.7
25	Shavers, Marcavia	6	8	1.3

Rebounds

##	Player	G	Reb	Reb/G
25	Shavers, Marcavia	6	38	6.3
11	Nichols, Keshunti	6	30	5.0
7	Ingram, J'Mani	6	27	4.5
24	Inniss, Asjah	6	21	3.5
35	Barclay, Asia	6	20	3.3

Assists

##	Player	G	Ast	Ast/G
44	Mays-Prince, Nakiyah	6	28	4.7
24	Inniss, Asjah	6	16	2.7
7	Ingram, J'Mani	6	9	1.5
9	Brown, Kamille	6	5	0.8
11	Nichols, Keshunti	6	4	0.7

Rebounds Average

##	Player	G	Reb	Reb/G
25	Shavers, Marcavia	6	38	6.3
11	Nichols, Keshunti	6	30	5.0
7	Ingram, J'Mani	6	27	4.5
24	Inniss, Asjah	6	21	3.5
35	Barclay, Asia	6	20	3.3

Steals

##	Player	G	Stl	Stl/G
9	Brown, Kamille	6	12	2.0
24	Inniss, Asjah	6	11	1.8
11	Nichols, Keshunti	6	10	1.7
44	Mays-Prince, Nakiyah	6	9	1.5
25	Shavers, Marcavia	6	5	0.8

Offensive Rebounds

##	Player	G	OReb	OReb/G
25	Shavers, Marcavia	6	14	2.3
11	Nichols, Keshunti	6	14	2.3
24	Inniss, Asjah	6	9	1.5
2	Gasaway, Marissa	6	9	1.5
7	Ingram, J'Mani	6	8	1.3

Blocked Shots

##	Player	G	Blk	Blk/G
11	Nichols, Keshunti	6	3	0.5
13	Leahy, Abby	6	2	0.3
7	Ingram, J'Mani	6	1	0.2
24	Inniss, Asjah	6	1	0.2
35	Barclay, Asia	6	1	0.2

Defensive Rebounds

##	Player	G	DReb	DReb/G
25	Shavers, Marcavia	6	24	4.0
7	Ingram, J'Mani	6	19	3.2
35	Barclay, Asia	6	18	3.0
11	Nichols, Keshunti	6	16	2.7
24	Inniss, Asjah	6	12	2.0

Minutes

##	Player	G	Min	Min/G
24	Inniss, Asjah	6	161	26:47
7	Ingram, J'Mani	6	141	23:35
44	Mays-Prince, Nakiyah	6	141	23:33
35	Barclay, Asia	6	140	23:17
25	Shavers, Marcavia	6	134	22:20



2025-26 ULM Women's Basketball
Team Game-by-Game
All games

Page 1/1
as of Nov 23, 2025

				Total		3-Pointers		Free throws		Rebounds											
Opponent	Date	Score		FG-FGA	PCT	3FG-3FGA	PCT	FT-FTA	PCT	OFF	DEF	TOT	AVG	PF	A	TO	BLK	STL	PTS	AVG	
Eastern Mich.	11/03/2025	80-71	W	30-62	.484	5-15	.333	15-20	.750	13	24	37	37.0	25	13	12	3	8	80	80.0	
Louisiana Tech	11/07/2025	70-62	W	25-56	.446	5-14	.357	15-21	.714	10	25	35	36.0	24	12	16	2	9	70	75.0	
Grambling	11/11/2025	74-55	W	27-58	.466	2-8	.250	18-30	.600	15	31	46	39.3	27	10	24	2	13	74	74.7	
Ark.-Pine Bluff	11/16/2025	79-50	W	26-62	.419	12-26	.462	15-24	.625	17	19	36	38.5	16	19	13	0	15	79	75.8	
at Sam Houston	11/20/2025	34-57	L	12-54	.222	2-13	.154	8-15	.533	23	26	49	40.6	24	7	36	0	9	34	67.4	
Lamar University	11/23/2025	62-47	W	23-53	.434	5-11	.455	11-16	.688	15	20	35	39.7	16	16	21	2	11	62	66.5	
Total		399		143-345	.414	31-87	.356	82-126	.651	93	145	238	39.7	132	77	122	9	65	399	66.5	
Opponents		342		117-323	.362	33-117	.282	75-115	.652	68	115	183	30.5	124	65	135	16	53	342	57.0	

ULM Averages

Games Played	Points/game	FG Pct	3FG Pct	FT Pct	Rebounds/game	Assists/game	Turnovers/game	Assist/Turnover ratio	Steals/game	Blocks/game
6	66.5	41.4	35.6	65.1	39.7	12.8	20.3	0.6	10.8	1.5



2025-26 ULM Women's Basketball
Opponents Game-by-Game
All games

Page 1/1
as of Nov 23, 2025

				Total		3-Pointers		Free throws		Rebounds											
Opponent	Date	Score		FG-FGA	PCT	3FG-3FGA	PCT	FT-FTA	PCT	OFF	DEF	TOT	AVG	PF	A	TO	BLK	STL	PTS	AVG	
Eastern Mich.	11/03/2025	80-71	W	22-57	.386	7-23	.304	20-24	.833	11	18	29	29.0	20	13	18	0	6	71	71.0	
Louisiana Tech	11/07/2025	70-62	W	21-62	.339	7-24	.292	13-20	.650	17	21	38	33.5	23	15	20	4	6	62	66.5	
Grambling	11/11/2025	74-55	W	18-62	.290	5-24	.208	14-27	.519	15	18	33	33.3	24	9	20	6	9	55	62.7	
Ark.-Pine Bluff	11/16/2025	79-50	W	17-38	.447	5-13	.385	11-15	.733	2	21	23	30.8	19	10	26	2	6	50	59.5	
at Sam Houston	11/20/2025	34-57	L	20-51	.392	5-15	.333	12-20	.600	9	22	31	30.8	19	10	26	1	16	57	59.0	
Lamar University	11/23/2025	62-47	W	19-53	.358	4-18	.222	5-9	.556	14	15	29	30.5	19	8	25	3	10	47	57.0	
Total		342		117-323	.362	33-117	.282	75-115	.652	68	115	183	30.5	124	65	135	16	53	342	57.0	
ULM		399		143-345	.414	31-87	.356	82-126	.651	93	145	238	39.7	132	77	122	9	65	399	66.5	

Opponents Averages

Games Played	Points/game	FG Pct	3FG Pct	FT Pct	Rebounds/game	Assists/game	Turnovers/game	Assist/Turnover ratio	Steals/game	Blocks/game
6	57.0	36.2	28.2	65.2	30.5	10.8	22.5	0.5	8.8	2.7



2025-26 ULM Women's Basketball Combined Team Statistics All games

Page 1/1
as of Nov 23, 2025

Game Records

Record	Overall	Home	Away	Neutral
ALL GAMES	5-1	5-0	0-1	0-0
CONFERENCE	0-0	0-0	0-0	0-0
NON-CONFERENCE	5-1	5-0	0-1	0-0

Score by Periods

Team	1st	2nd	3rd	4th	OT	TOT
ULM	95	109	90	105	0	399
Opponents	79	95	92	76	0	342

Team Box Score

No.	Player				Total		3-Point		F-Throw		Rebounds														
		GP-GS	MIN	AVG	FG-FGA	FG%	3FG-3FGA	3FG%	FT-FTA	FT%	OFF	DEF	TOT	AVG	PF	DQ	A	TO	BLK	STL	PTS	AVG			
7	INGRAM, J'Mani	6-6	141:27	23.6	24-48	.500	0-0	.000	15-23	.652	8	19	27	4.5	20	1	9	24	1	3	63	10.5			
25	SHAVERS, Marcavia	6-6	134:02	22.3	23-45	.511	0-0	.000	8-14	.571	14	24	38	6.3	20	0	2	10	0	5	54	9.0			
24	INNISS, Asjah	6-6	160:42	26.8	15-48	.313	7-22	.318	14-19	.737	9	12	21	3.5	15	0	16	14	1	11	51	8.5			
0	JACKSON, Jazmine	6-6	102:03	17.0	15-30	.500	10-18	.556	10-13	.769	6	12	18	3.0	5	0	2	2	0	4	50	8.3			
11	NICHOLS, Keshunti	6-0	132:08	22.0	21-55	.382	1-7	.143	7-11	.636	14	16	30	5.0	17	0	4	16	3	10	50	8.3			
44	MAYS-PRINCE, Nakiyah	6-0	141:16	23.5	14-46	.304	3-15	.200	11-17	.647	6	9	15	2.5	16	0	28	18	0	9	42	7.0			
35	BARCLAY, Asia	6-6	139:44	23.3	10-22	.455	0-1	.000	5-8	.625	2	18	20	3.3	11	0	4	9	1	2	25	4.2			
9	BROWN, Kamille	6-0	88:36	14.8	7-17	.412	3-7	.429	6-11	.545	6	10	16	2.7	10	0	5	6	1	12	23	3.8			
2	GASAWAY, Marissa	6-0	72:06	12.0	5-15	.333	1-3	.333	4-8	.500	9	10	19	3.2	7	0	4	8	0	4	15	2.5			
3	NICHOLAS, Nailea	6-0	34:55	5.8	5-9	.556	2-5	.400	0-0	.000	2	6	8	1.3	8	0	2	0	0	3	12	2.0			
15	CHOMKO, Katelyn	5-0	11:35	2.3	3-7	.429	3-7	.429	0-0	.000	1	1	2	0.4	2	0	0	1	0	0	9	1.8			
13	LEAHY, Abby	6-0	41:25	6.9	1-3	.333	1-2	.500	2-2	1.000	5	0	5	0.8	1	0	1	5	2	2	5	0.8			
Team											11	8	19					9							
Total		6	1200		143-345	.414	31-87	.356	82-126	.651	93	145	238	39.7	132	1	77	122	9	65	399	66.5			
Opponents		6	1200		117-323	.362	33-117	.282	75-115	.652	68	115	183	30.5	124	4	65	135	16	53	342	57.0			

Team Statistics

	ULM	OPP
Scoring	399	342
Points per game	66.5	57.0
Scoring margin	+9.5	-
Field goals-att	143-345	117-323
Field goal pct	.414	.362
3 point fg-att	31-87	33-117
3-point FG pct	.356	.282
3-pt FG made per game	5.2	5.5
Free throws-att	82-126	75-115
Free throw pct	.651	.652
F-Throws made per game	13.7	12.5
Rebounds	238	183
Rebounds per game	39.7	30.5
Rebounding margin	+9.2	-
Assists	77	65
Assists per game	12.8	10.8
Turnovers	122	135
Turnovers per game	20.3	22.5
Turnover margin	+2.2	-
Assist/turnover ratio	0.6	0.5
Steals	65	53
Steals per game	10.8	8.8
Blocks	9	16
Blocks per game	1.5	2.7
Winning streak	1	-
Home win streak	5	-
Attendance	6279	432
Home games-Avg/Game	5-1256	1-432
Neutral site-Avg/Game	-	0-0

Team Results

Date	Opponent		Score	Att.
11/03/2025	Eastern Mich.	W	80-71	827
11/07/2025	Louisiana Tech	W	70-62	1593
11/11/2025	Grambling	W	74-55	2242
11/16/2025	Ark.-Pine Bluff	W	79-50	738
11/20/2025	at Sam Houston	L	34-57	432
11/23/2025	Lamar University	W	62-47	879

RADIO/TV ROSTER



JAZMINE JACKSON
5-8 • R-Jr. • G
Jacksonville, Fla.



VANESSA SCHWARZMANN
5-9 • Gr. • G
Upper Marlboro, Md.



MARISSA GASAWAY
5-11 • Gr. • F
Louisville, Ky.



NAILEA NICHOLAS
6-0 • Gr. • F
St. Thomas, U.S. Virgin Islands



J'MANI INGRAM
5-7 • Gr. • G
North Augusta, S.C.



KAMILLE BROWN
5-8 • Jr. • G
Conway, Ark.



KESHUNTI NICHOLS
6-0 • Gr. • F
Pearl, Miss.



ABBY LEAHY
6-1 • Jr. • G
Colorado Springs, Colo.



KATELYN CHOMKO
5-7 • Sr. • G
Houston, Texas



ROGE'NE' HILLARD
6-3 • Jr. • C
Hazlehurst, Miss.



ASJAH INNISS
5-9 • Gr. • G
Suwanee, Ga.



MARCAVIA SHAVERS
6-2 • Gr. • C
Biloxi, Miss.



ASIA BARCLAY
6-0 • Gr. • F
Anniston, Ala.



NAKIYAH MAYS-PRINCE
5-5 • Gr. • F
Chicago, Ill.



SCOTTY FLETCHER
HEAD COACH



MENDY McNEESE
ASSOCIATE HEAD COACH



ELYSSA COLEMAN
ASSISTANT COACH



NIKOLAS QUEZADA
ASSISTANT COACH



MIKAYLA ETIENNE
DIRECTOR OF
PLAYER DEVELOPMENT



ELISE JOHNSON
DIRECTOR OF
OPERATIONS