



Officials: Denise Brooks, Roy Gulbeyan, Karlleena Tobin

Mississippi St. - 67

Record: 15-14

NO.	Name	C/G	Min	FG			3P			FT			Rebounds			Fouls		TP	AS	TO	ST	Blocks		+/-
				M-A	M-A	M-A	OR	DR	TOT	PF	FD	BS	BA											
22	Charlotte Kohl	C	29:45	3-4	0-0	0-2	2	2	4	0	2	6	0	0	0	2	0	0	0	2	0	-20		
0	Anastasia Hayes	G	38:40	5-13	0-0	3-5	1	2	3	3	6	13	3	4	2	1	2	1	2	-16				
1	Myah Taylor	G	37:03	3-11	0-2	0-0	0	2	2	4	2	6	7	3	2	0	1	-8						
2	Jerkaila Jordan	G	32:19	8-17	2-5	3-5	1	3	4	0	4	21	1	2	4	0	1	-4						
23	Caterrion Thompson	G	38:00	7-14	1-2	4-4	1	7	8	3	2	19	2	1	0	0	0	-19						
10	Aislynn Hayes		22:41	1-4	0-1	0-0	0	3	3	1	2	2	2	2	2	0	0	-5						
24	Ashley Jones		01:32	0-0	0-0	0-0	0	0	0	0	0	0	0	1	0	0	0	-8						
Team							0	1	1			0		1										
<b>Totals</b>				27-63	3-10	10-16	5	20	25	11	18	67	15	14	10	3	4	-16						

Technical Fouls::NONE

Shooting By Period		
1 <sup>st</sup> FG%	9-16	56.3%
3PT%	3-6	50.0%
FT%	0-3	0%
2 <sup>nd</sup> FG%	4-15	26.7%
3PT%	0-1	0.0%
FT%	1-2	50%
3 <sup>rd</sup> FG%	5-12	41.7%
3PT%	0-0	0.0%
FT%	4-4	100%
4 <sup>th</sup> FG%	9-20	45.0%
3PT%	0-3	0.0%
FT%	5-7	71.4%
GM FG%	27-63	42.9%
3PT%	3-10	30.0%
FT%	10-16	62.5%

Dead Ball Rebounds: 2, 2

Kentucky - 83

Record: 16-11

NO.	Name	C/G	Min	FG			3P			FT			Rebounds			Fouls		TP	AS	TO	ST	Blocks		+/-
				M-A	M-A	M-A	OR	DR	TOT	PF	FD	BS	BA											
21	Nyah Leveretter	F	20:11	2-3	0-0	0-2	0	5	5	4	2	4	1	1	0	0	1	10						
3	Jazmine Massengill	G	36:09	6-11	0-1	0-0	1	5	6	2	0	12	7	3	0	2	0	13						
5	Rhyne Howard	G	32:53	6-16	1-5	1-1	0	3	3	3	1	14	4	3	2	0	0	18						
11	Jada Walker	G	32:25	7-12	1-5	6-6	2	6	8	2	5	21	2	1	0	0	1	18						
12	Treasure Hunt	G	14:29	1-3	0-0	0-0	1	3	4	1	0	2	0	1	0	0	0	8						
44	Dre'una Edwards		23:06	8-13	0-0	2-3	6	8	14	4	2	18	2	3	1	0	1	2						
1	Robyn Benton		32:16	6-10	0-1	0-0	2	2	4	2	1	12	2	4	1	2	0	16						
34	Emma King		08:31	0-0	0-0	0-0	0	1	1	0	0	0	2	2	0	0	0	-5						
Team							0	2	2			0		0										
<b>Totals</b>				36-68	2-12	9-12	12	35	47	18	11	83	20	18	4	4	3	16						

Technical Fouls::NONE

Shooting By Period		
1 <sup>st</sup> FG%	8-17	47.1%
3PT%	0-1	0.0%
FT%	0-0	0%
2 <sup>nd</sup> FG%	9-17	52.9%
3PT%	1-4	25.0%
FT%	3-5	60%
3 <sup>rd</sup> FG%	6-15	40.0%
3PT%	1-5	20.0%
FT%	6-6	100%
4 <sup>th</sup> FG%	13-19	68.4%
3PT%	0-2	0.0%
FT%	0-1	0%
GM FG%	36-68	52.9%
3PT%	2-12	16.7%
FT%	9-12	75.0%

Dead Ball Rebounds: 1, 0

	MSU	UK
Biggest lead	7 (1 <sup>st</sup> 1:44)	21 (4 <sup>th</sup> 4:13)
Best Scoring Run	8 (1 <sup>st</sup> 3:35)	10 (2 <sup>nd</sup> 6:15)
Lead Changes	2	
Times Tied	2	
Time with Lead	07:08	31:11

Points from	MSU	UK
Turnovers	14	21
Paint	44	52
Second Chance	2	10
Fast Breaks	10	12
Bench	2	30

	Period by Period Scoring				
	1st	2nd	3rd	4th	TOT
MSU	21	9	14	23	67
UK	16	22	19	26	83

**Mississippi St. at Kentucky**03/03/22 Bridgestone Arena, Nashville  
2021-22 Women's Basketball

Officials: Denise Brooks, Roy Gulbeyan, Karlleena Tobin

**Period 1****Quarter Starters:**

<b>UK</b>	3 Massengill J	5 Howard R	11 Walker J	12 Hunt T	21 Leveretter N
<b>MSU</b>	0 Hayes A	1 Taylor M	2 Jordan J	22 Kohl C	23 Thompson C

Game Time	UK	Score	Diff	MSU
10:00	21 LEVERETTER N jumpball won			22 KOHL C jumpball lost
09:42	11 WALKER J 2pt FG outside the paint, jump shot made (2)	<b>2-0</b>	<b>2</b>	
09:42	21 LEVERETTER N assist (1)			
09:06		<b>2-2</b>	<b>0</b>	2 JORDAN J 2pt FG outside the paint, pull up jump shot made (2)
08:50	5 HOWARD R 2pt FG in the paint, layup missed			
08:48				defensive rebound (1)
08:39				turnover 10 sec back court (1)
08:15	21 LEVERETTER N turnover travel (1)			
08:09	5 HOWARD R steal (1)			2 JORDAN J turnover bad pass (1)
08:04	5 HOWARD R 2pt FG fast break from turnover in the paint, layup made (2)	<b>4-2</b>	<b>2</b>	
07:52				2 JORDAN J 3pt FG , jump shot missed
07:49	11 WALKER J defensive rebound (1)			
07:43	11 WALKER J 2pt FG outside the paint, pull up jump shot made (4)	<b>6-2</b>	<b>4</b>	
07:29				0 HAYES A 2pt FG in the paint, layup missed
07:27				0 HAYES A offensive rebound (1)
07:23				23 THOMPSON C 3pt FG second chance, jump shot missed
07:21	5 HOWARD R defensive rebound (1)			
07:03	11 WALKER J 2pt FG in the paint, layup made (6)	<b>8-2</b>	<b>6</b>	
06:46		<b>8-4</b>	<b>4</b>	22 KOHL C 2pt FG in the paint, jump shot made (2)
06:32	3 MASSENGILL J turnover bad pass (1)			
06:32	21 LEVERETTER N substitution out			
06:32	44 EDWARDS D substitution in			
06:21				1 TAYLOR M 2pt FG from turnover in the paint, jump shot missed
06:20	defensive rebound (3)			
06:07	3 MASSENGILL J 2pt FG in the paint, driving layup missed			
06:04	44 EDWARDS D offensive rebound (1)			
06:03	44 EDWARDS D 2pt FG second chance outside the paint, jump shot missed			
06:00				2 JORDAN J defensive rebound (1)
05:55		<b>8-6</b>	<b>2</b>	2 JORDAN J 2pt FG fast break in the paint, driving layup made (4)
05:55	12 HUNT T foul shooting (1 - 1)			2 JORDAN J foul drawn (1)
05:55	12 HUNT T substitution out			
05:55	1 BENTON R substitution in			
05:55				2 JORDAN J free throw fast break 1 - 1 missed
05:54	11 WALKER J defensive rebound (2)			
05:42	11 WALKER J foul drawn (1)			1 TAYLOR M foul personal (1 - 1)
05:39	5 HOWARD R 2pt FG in the paint, layup made (4)	<b>10-6</b>	<b>4</b>	
05:39	3 MASSENGILL J assist (1)			
05:28		<b>10-9</b>	<b>1</b>	2 JORDAN J 3pt FG , jump shot made (7)
05:28				0 HAYES A assist (1)



**Mississippi St. at Kentucky**

03/03/22 Bridgestone Arena, Nashville  
2021-22 Women's Basketball

Officials: Denise Brooks, Roy Gulbeyan, Karlleena Tobin

Game Time	UK	Score	Diff	MSU
05:18	1 BENTON R 2pt FG in the paint, layup missed			
05:15				23 THOMPSON C defensive rebound (1)
04:54				1 TAYLOR M 2pt FG in the paint, layup blocked
04:54	3 MASSENGILL J block (1)			
04:50	44 EDWARDS D defensive rebound (2)			
04:48	5 HOWARD R 3pt FG , jump shot missed			
04:46				22 KOHL C defensive rebound (1)
04:31		<b>10-11</b>	<b>-1</b>	0 HAYES A 2pt FG in the paint, layup made (2)
04:31				1 TAYLOR M assist (1)
04:09	5 HOWARD R 2pt FG outside the paint, step back jump shot missed			
04:06				23 THOMPSON C defensive rebound (2)
03:57				0 HAYES A 2pt FG in the paint, layup missed
03:56				22 KOHL C offensive rebound (2)
03:55	44 EDWARDS D foul shooting (1 - 2)			22 KOHL C foul drawn (1)
03:55	Timeout media			
03:55	3 MASSENGILL J substitution out			
03:55	34 KING E substitution in			
03:55				23 THOMPSON C substitution out
03:55				10 HAYES A substitution in
03:55				22 KOHL C free throw 1 - 2 missed
03:55				offensive dead ball rebound (1)
03:55				22 KOHL C free throw 2 - 2 missed
03:53	11 WALKER J defensive rebound (3)			
03:50	11 WALKER J 2pt FG in the paint, layup blocked			
03:50				0 HAYES A block (1)
03:50				0 HAYES A defensive rebound (2)
03:35		<b>10-14</b>	<b>-4</b>	2 JORDAN J 3pt FG , jump shot made (10)
03:15	1 BENTON R 2pt FG outside the paint, jump shot missed			
03:10				2 JORDAN J defensive rebound (2)
02:59				1 TAYLOR M turnover bad pass (1)
02:59	11 WALKER J substitution out			
02:59	3 MASSENGILL J substitution in			
02:44	1 BENTON R turnover bad pass (1)			2 JORDAN J steal (1)
02:41				0 HAYES A turnover travel (1)
02:27	44 EDWARDS D 2pt FG from turnover outside the paint, jump shot made (2)	<b>12-14</b>	<b>-2</b>	
02:27	34 KING E assist (1)			
02:07		<b>12-16</b>	<b>-4</b>	2 JORDAN J 2pt FG outside the paint, jump shot made (12)
02:07				10 HAYES A assist (1)
01:55	44 EDWARDS D foul offensive (2 - 3)			22 KOHL C foul drawn (2)
01:55	44 EDWARDS D turnover offensive (1)			
01:55	44 EDWARDS D substitution out			
01:55	12 HUNT T substitution in			
01:55				22 KOHL C substitution out
01:55				23 THOMPSON C substitution in
01:44		<b>12-19</b>	<b>-7</b>	23 THOMPSON C 3pt FG from turnover, jump shot made (3)
01:44				1 TAYLOR M assist (2)
01:14	3 MASSENGILL J 2pt FG in the paint, pull up jump shot made (2)	<b>14-19</b>	<b>-5</b>	



Official Basketball Play by Play - 1st Period

**Mississippi St. at Kentucky**

03/03/22 Bridgestone Arena, Nashville  
2021-22 Women's Basketball

Game Time: 7:00 PM

Game Duration: 1:47

Officials: Denise Brooks, Roy Gulbeyan, Karlleena Tobin

Game Time	UK	Score	Diff	MSU
00:54		14-21	-7	10 HAYES A 2pt FG in the paint, driving layup made (2)
00:54				23 THOMPSON C assist (1)
00:32	1 BENTON R 2pt FG outside the paint, jump shot made (2)	16-21	-5	
00:32	34 KING E assist (2)			
00:09				2 JORDAN J 3pt FG , jump shot missed
00:06	3 MASSENGILL J defensive rebound (1)			
00:00	5 HOWARD R 2pt FG in the paint, pull up jump shot missed			
00:00				1 TAYLOR M defensive rebound (1)
<b>END OF PERIOD</b>				
<b>UK 16-21 MSU</b>				



**Mississippi St. at Kentucky**

03/03/22 Bridgestone Arena, Nashville  
2021-22 Women's Basketball

Officials: Denise Brooks, Roy Gulbeyan, Karlleena Tobin

**Mississippi St. - 21**

NO.	Name	C/G	Min	FG			Rebounds			Fouls		TP	AS	TO	ST	Blocks		+/-
				M-A	M-A	M-A	OR	DR	TOT	PF	FD					BS	BA	
22	Charlotte Kohl	C	08:05	1-1	0-0	0-2	1	1	2	0	2	2	0	0	0	0	0	4
0	Anastasia Hayes	G	10:00	1-3	0-0	0-0	1	1	2	0	0	2	1	1	0	1	0	5
1	Myah Taylor	G	10:00	0-2	0-0	0-0	0	1	1	1	0	0	2	1	0	0	1	5
2	Jerkaila Jordan	G	10:00	5-7	2-4	0-1	0	2	2	0	1	12	0	1	1	0	0	5
23	Caterrion Thompson	G	08:00	1-2	1-2	0-0	0	2	2	0	0	3	1	0	0	0	0	2
10	Aislynn Hayes		03:55	1-1	0-0	0-0	0	0	0	0	0	2	1	0	0	0	0	4
Team							0	1	1		0			1				
<b>Totals</b>				9-16	3-6	0-3	2	8	10	1	3	21	5	4	1	1	1	5

Shooting By Period		
1st FG%	9-16	56.3%
3PT%	3-6	50.0%
FT%	0-3	0%
GM FG%	9-16	56.3%
3PT%	3-6	50.0%
FT%	0-3	0.0%

Dead Ball Rebounds: 1, 0

Technical Fouls::NONE

**Kentucky - 16**

NO.	Name	C/G	Min	FG			Rebounds			Fouls		TP	AS	TO	ST	Blocks		+/-
				M-A	M-A	M-A	OR	DR	TOT	PF	FD					BS	BA	
21	Nyah Leveretter	F	03:28	0-0	0-0	0-0	0	0	0	0	0	0	1	1	0	0	0	4
3	Jazmine Massengill	G	09:04	1-2	0-0	0-0	0	1	1	0	0	2	1	1	0	1	0	-2
5	Rhyn Howard	G	10:00	2-6	0-1	0-0	0	1	1	0	0	4	0	0	1	0	0	-5
11	Jada Walker	G	07:01	3-4	0-0	0-0	0	3	3	0	1	6	0	0	0	0	1	-4
12	Treasure Hunt	G	06:00	0-0	0-0	0-0	0	0	0	1	0	0	0	0	0	0	0	1
44	Dre'una Edwards		04:37	1-2	0-0	0-0	1	1	2	2	0	2	0	1	0	0	0	-8
1	Robyn Benton		05:55	1-3	0-0	0-0	0	0	0	0	0	2	0	1	0	0	0	-7
34	Emma King		03:55	0-0	0-0	0-0	0	0	0	0	0	0	2	0	0	0	0	-4
Team							0	1	1		0			0				
<b>Totals</b>				8-17	0-1	0-0	1	7	8	3	1	16	4	4	1	1	1	-5

Shooting By Period		
1st FG%	8-17	47.1%
3PT%	0-1	0.0%
FT%	0-0	0%
GM FG%	8-17	47.1%
3PT%	0-1	0.0%
FT%	0-0	0.0%

Dead Ball Rebounds: 0, 0

Technical Fouls::NONE

	MSU	UK
Biggest lead	7 (1st 1:44)	6 (1st 7:03)
Best Scoring Run	8 (1st 3:35)	6 (1st 7:03)
Lead Changes	1	
Times Tied	1	
Time with Lead	04:31	04:09

Points from	MSU	UK
Turnovers	3	4
Paint	8	8
Second Chance	0	0
Fast Breaks	2	2
Bench	2	4

	Period by Period Scoring				
	1st	2nd	3rd	4th	TOT
MSU	21	9	14	23	67
UK	16	22	19	26	83



**Mississippi St. at Kentucky**

03/03/22 Bridgestone Arena, Nashville  
2021-22 Women's Basketball

Officials: Denise Brooks, Roy Gulbeyan, Karlleena Tobin

**Period 2**

**Quarter Starters:**

<b>UK</b>	1 Benton R	3 Massengill J	5 Howard R	11 Walker J	12 Hunt T
<b>MSU</b>	0 Hayes A	1 Taylor M	10 Hayes A	22 Kohl C	23 Thompson C

Game Time	UK	Score	Diff	MSU
10:00	34 KING E substitution out			
10:00	11 WALKER J substitution in			
10:00				2 JORDAN J substitution out
10:00				22 KOHL C substitution in
09:47				1 TAYLOR M 3pt FG , jump shot missed
09:44	12 HUNT T defensive rebound (1)			
09:37	12 HUNT T 2pt FG in the paint, pull up jump shot missed			
09:34	1 BENTON R offensive rebound (1)			
09:25	3 MASSENGILL J 2pt FG second chance outside the paint, jump shot missed			
09:19	3 MASSENGILL J offensive rebound (2)			
09:18	3 MASSENGILL J 2pt FG second chance outside the paint, jump shot made (4)	<b>18-21</b>	<b>-3</b>	
08:59		<b>18-23</b>	<b>-5</b>	22 KOHL C 2pt FG in the paint, layup made (4)
08:59				10 HAYES A assist (2)
08:42	11 WALKER J 3pt FG , jump shot missed			
08:39				10 HAYES A defensive rebound (1)
08:37	1 BENTON R steal (1)			10 HAYES A turnover bad pass (1)
08:29	11 WALKER J 2pt FG from turnover in the paint, layup made (8)	<b>20-23</b>	<b>-3</b>	
08:29	5 HOWARD R assist (1)			
08:11				0 HAYES A 2pt FG in the paint, jump shot missed
08:09	12 HUNT T defensive rebound (2)			
07:49	11 WALKER J 3pt FG , jump shot missed			
07:47				defensive dead ball rebound (2)
07:47	5 HOWARD R foul personal (1 - 1)			10 HAYES A foul drawn (1)
07:47	3 MASSENGILL J substitution out			
07:47	21 LEVERETTER N substitution in			
07:47				1 TAYLOR M substitution out
07:47				10 HAYES A substitution out
07:47				2 JORDAN J substitution in
07:47				24 JONES A substitution in
07:36	5 HOWARD R steal (2)			2 JORDAN J turnover lost ball (2)
07:23	5 HOWARD R 2pt FG from turnover in the paint, layup made (6)	<b>22-23</b>	<b>-1</b>	
07:23	5 HOWARD R foul drawn (1)			23 THOMPSON C foul shooting (1 - 1)
07:23	5 HOWARD R free throw 1 - 1 made (7)	<b>23-23</b>	<b>0</b>	
07:18				24 JONES A turnover bad pass (1)
07:02	5 HOWARD R 3pt FG from turnover, jump shot made (10)	<b>26-23</b>	<b>3</b>	
07:02	11 WALKER J assist (1)			
06:32				2 JORDAN J 2pt FG in the paint, driving layup missed
06:30	21 LEVERETTER N defensive rebound (1)			
06:15	5 HOWARD R 2pt FG in the paint, layup made (12)	<b>28-23</b>	<b>5</b>	
06:15				Timeout 30 Sec
06:15				24 JONES A substitution out
06:15				1 TAYLOR M substitution in

**Mississippi St. at Kentucky**03/03/22 Bridgestone Arena, Nashville  
2021-22 Women's Basketball

Officials: Denise Brooks, Roy Gulbeyan, Karlleena Tobin

Game Time	UK	Score	Diff	MSU
05:57		<b>28-25</b>	<b>3</b>	0 HAYES A 2pt FG in the paint, floating jump shot made (4)
05:57				2 JORDAN J assist (1)
05:30	5 HOWARD R turnover lost ball (1)			
05:17				1 TAYLOR M 2pt FG from turnover in the paint, driving layup missed
05:15	21 LEVERETTER N defensive rebound (2)			
04:52	5 HOWARD R foul offensive (2 - 2)			0 HAYES A foul drawn (1)
04:52	5 HOWARD R turnover offensive (2)			
04:52	5 HOWARD R substitution out			
04:52	3 MASSENGILL J substitution in			
04:35	21 LEVERETTER N foul shooting (1 - 3)			2 JORDAN J foul drawn (2)
04:35		<b>28-26</b>	<b>2</b>	2 JORDAN J free throw 1 - 2 made (13)
04:35				2 JORDAN J free throw 2 - 2 missed
04:35	11 WALKER J defensive rebound (4)			
04:23	12 HUNT T turnover bad pass (1)			2 JORDAN J steal (2)
04:19				2 JORDAN J 2pt FG from turnover in the paint, layup blocked
04:19	1 BENTON R block (1)			
04:15	1 BENTON R defensive rebound (2)			
04:13	12 HUNT T 2pt FG outside the paint, jump shot missed			
04:09	12 HUNT T offensive rebound (3)			
04:09	12 HUNT T 2pt FG second chance in the paint, layup made (2)	<b>30-26</b>	<b>4</b>	
03:48				23 THOMPSON C 2pt FG outside the paint, jump shot missed
03:45	12 HUNT T defensive rebound (4)			
03:40	21 LEVERETTER N 2pt FG in the paint, layup blocked			
03:40				22 KOHL C block (1)
03:36				23 THOMPSON C defensive rebound (3)
03:29				0 HAYES A 2pt FG in the paint, layup blocked
03:29	3 MASSENGILL J block (2)			
03:26	3 MASSENGILL J defensive rebound (3)			
03:23	1 BENTON R foul offensive (1 - 4)			1 TAYLOR M foul drawn (1)
03:23	1 BENTON R turnover offensive (2)			
03:23				22 KOHL C substitution out
03:23				10 HAYES A substitution in
03:07				2 JORDAN J 2pt FG from turnover in the paint, layup missed
03:04	11 WALKER J defensive rebound (5)			
03:02	11 WALKER J foul drawn (2)			1 TAYLOR M foul shooting (2 - 2)
03:02	12 HUNT T substitution out			
03:02	5 HOWARD R substitution in			
03:02	11 WALKER J free throw 1 - 2 made (9)	<b>31-26</b>	<b>5</b>	
03:02	11 WALKER J free throw 2 - 2 made (10)	<b>32-26</b>	<b>6</b>	
02:51		<b>32-28</b>	<b>4</b>	23 THOMPSON C 2pt FG in the paint, pull up jump shot made (5)
02:51				0 HAYES A assist (2)
02:32	1 BENTON R 2pt FG in the paint, pull up jump shot made (4)	<b>34-28</b>	<b>6</b>	
02:15		<b>34-30</b>	<b>4</b>	23 THOMPSON C 2pt FG in the paint, layup made (7)
02:15				1 TAYLOR M assist (3)
01:56	21 LEVERETTER N foul drawn (1)			23 THOMPSON C foul shooting (2 - 3)
01:56	21 LEVERETTER N free throw 1 - 2 missed			
01:56	offensive dead ball rebound (1)			
01:56	21 LEVERETTER N free throw 2 - 2 missed			



**Mississippi St. at Kentucky**

03/03/22 Bridgestone Arena, Nashville  
2021-22 Women's Basketball

Officials: Denise Brooks, Roy Gulbeyan, Karlleena Tobin

Game Time	UK	Score	Diff	MSU
01:55	1 BENTON R offensive rebound (3)			
01:53	11 WALKER J 3pt FG second chance, jump shot missed			
01:50				23 THOMPSON C defensive rebound (4)
01:36				0 HAYES A turnover travel (2)
01:36				2 JORDAN J substitution out
01:36				22 KOHL C substitution in
01:24	5 HOWARD R 2pt FG from turnover outside the paint, step back jump shot made (14)	<b>36-30</b>	<b>6</b>	
01:07				10 HAYES A turnover lost ball (2)
01:03	3 MASSENGILL J 2pt FG fast break from turnover in the paint, layup made (6)	<b>38-30</b>	<b>8</b>	
01:03	5 HOWARD R assist (2)			
00:51				1 TAYLOR M turnover lost ball (2)
00:51	1 BENTON R foul drawn (1)			1 TAYLOR M foul personal (3 - 4)
00:51				1 TAYLOR M substitution out
00:51				2 JORDAN J substitution in
00:38	5 HOWARD R 2pt FG from turnover outside the paint, jump shot missed			
00:34				2 JORDAN J defensive rebound (3)
00:30				2 JORDAN J 2pt FG in the paint, layup missed
00:27				23 THOMPSON C offensive rebound (5)
00:27				23 THOMPSON C 2pt FG second chance in the paint, layup missed
00:26	21 LEVERETTER N defensive rebound (3)			
00:24	3 MASSENGILL J turnover bad pass (2)			0 HAYES A steal (1)
00:20				0 HAYES A 2pt FG from turnover in the paint, jump shot missed
00:17	11 WALKER J defensive rebound (6)			
<b>END OF PERIOD</b>				
<b>UK 38-30 MSU</b>				



**Mississippi St. at Kentucky**

03/03/22 Bridgestone Arena, Nashville  
2021-22 Women's Basketball

Officials: Denise Brooks, Roy Gulbeyan, Karlleena Tobin

**Mississippi St. - 9**

NO.	Name	C/G	Min	FG			Rebounds			Fouls		TP	AS	TO	ST	Blocks		+/-
				M-A	3P	FT	OR	DR	TOT	PF	FD					BS	BA	
22	Charlotte Kohl	C	08:13	1-1	0-0	0-0	0	0	0	0	0	2	0	0	0	1	0	-13
0	Anastasia Hayes	G	10:00	1-4	0-0	0-0	0	0	0	0	1	2	1	1	1	0	1	-13
1	Myah Taylor	G	07:37	0-2	0-1	0-0	0	0	0	2	1	0	1	1	0	0	0	-5
2	Jerkaila Jordan	G	07:02	0-4	0-0	1-2	0	1	1	0	1	1	1	1	1	0	1	-7
23	Caterrion Thompson	G	10:00	2-4	0-0	0-0	1	2	3	2	0	4	0	0	0	0	0	-13
24	Ashley Jones		01:32	0-0	0-0	0-0	0	0	0	0	0	0	0	1	0	0	0	-8
10	Aislynn Hayes		05:36	0-0	0-0	0-0	0	1	1	0	1	0	1	2	0	0	0	-6
Team							0	0	0			0						
<b>Totals</b>				4-15	0-1	1-2	1	4	5	4	4	9	4	6	2	1	2	-13

Shooting By Period		
2nd FG%	4-15	26.7%
3PT%	0-1	0.0%
FT%	1-2	50%
GM FG%	4-15	26.7%
3PT%	0-1	0.0%
FT%	1-2	50.0%

Dead Ball Rebounds: 0, 1

Technical Fouls::NONE

**Kentucky - 22**

NO.	Name	C/G	Min	FG			Rebounds			Fouls		TP	AS	TO	ST	Blocks		+/-
				M-A	3P	FT	OR	DR	TOT	PF	FD					BS	BA	
21	Nyah Leveretter	F	07:47	0-1	0-0	0-2	0	3	3	1	1	0	0	0	0	0	1	11
3	Jazmine Massengill	G	07:05	2-3	0-0	0-0	1	1	2	0	0	4	0	1	0	1	0	7
5	Rhyne Howard	G	08:10	4-5	1-1	1-1	0	0	0	2	1	10	2	2	1	0	0	12
11	Jada Walker	G	10:00	1-4	0-3	2-2	0	3	3	0	1	4	1	0	0	0	0	13
12	Treasure Hunt	G	06:58	1-3	0-0	0-0	1	3	4	0	0	2	0	1	0	0	0	9
1	Robyn Benton		10:00	1-1	0-0	0-0	2	1	3	1	1	2	0	1	1	1	0	13
34	Emma King		00:00	0-0	0-0	0-0	0	0	0	0	0	0	0	0	0	0	0	0
Team							0	0	0			0						
<b>Totals</b>				9-17	1-4	3-5	4	11	15	4	4	22	3	5	2	2	1	13

Shooting By Period		
2nd FG%	9-17	52.9%
3PT%	1-4	25.0%
FT%	3-5	60%
GM FG%	9-17	52.9%
3PT%	1-4	25.0%
FT%	3-5	60.0%

Dead Ball Rebounds: 1, 0

Technical Fouls::NONE

	MSU	UK
Biggest lead	5 (2 <sup>nd</sup> 9:47)	8 (2 <sup>nd</sup> 1:03)
Best Scoring Run	3(2 <sup>nd</sup> 4:35)	10(2 <sup>nd</sup> 6:15)
Lead Changes	1	
Times Tied	1	
Time with Lead	02:24	07:02

Points from	MSU	UK
Turnovers	1	11
Paint	8	12
Second Chance	0	4
Fast Breaks	0	2
Bench	0	2

Period by Period Scoring					
	1st	2nd	3rd	4th	TOT
MSU	21	9	14	23	67
UK	16	22	19	26	83



**Mississippi St. at Kentucky**

03/03/22 Bridgestone Arena, Nashville  
2021-22 Women's Basketball

Officials: Denise Brooks, Roy Gulbeyan, Karlleena Tobin

**Mississippi St. - 30**

NO.	Name	C/G	Min	FG			Rebounds			Fouls		TP	AS	TO	ST	Blocks		+/-
				M-A	M-A	M-A	OR	DR	TOT	PF	FD					BS	BA	
22	Charlotte Kohl	C	16:18	2-2	0-0	0-2	1	1	2	0	2	4	0	0	0	1	0	-9
0	Anastasia Hayes	G	20:00	2-7	0-0	0-0	1	1	2	0	1	4	2	2	1	1	1	-8
1	Myah Taylor	G	17:37	0-4	0-1	0-0	0	1	1	3	1	0	3	2	0	0	1	0
2	Jerkaila Jordan	G	17:02	5-11	2-4	1-3	0	3	3	0	2	13	1	2	2	0	1	-2
23	Caterrion Thompson	G	18:00	3-6	1-2	0-0	1	4	5	2	0	7	1	0	0	0	0	-11
10	Aislynn Hayes		09:31	1-1	0-0	0-0	0	1	1	0	1	2	2	2	0	0	0	-2
24	Ashley Jones		01:32	0-0	0-0	0-0	0	0	0	0	0	0	0	1	0	0	0	-8
Team							0	1	1			0		1				
<b>Totals</b>				13-31	3-7	1-5	3	12	15	5	7	30	9	10	3	2	3	-8

Shooting By Period		
1 <sup>st</sup> FG%	9-16	56.3%
3PT%	3-6	50.0%
FT%	0-3	0%
2 <sup>nd</sup> FG%	4-15	26.7%
3PT%	0-1	0.0%
FT%	1-2	50%
GM FG%	13-31	41.9%
3PT%	3-7	42.9%
FT%	1-5	20.0%

Dead Ball Rebounds: 1, 1

Technical Fouls::NONE

**Kentucky - 38**

NO.	Name	C/G	Min	FG			Rebounds			Fouls		TP	AS	TO	ST	Blocks		+/-
				M-A	M-A	M-A	OR	DR	TOT	PF	FD					BS	BA	
21	Nyah Leveretter	F	11:15	0-1	0-0	0-2	0	3	3	1	1	0	1	1	0	0	1	15
3	Jazmine Massengill	G	16:09	3-5	0-0	0-0	1	2	3	0	0	6	1	2	0	2	0	5
5	Rhyn Howard	G	18:10	6-11	1-2	1-1	0	1	1	2	1	14	2	2	2	0	0	7
11	Jada Walker	G	17:01	4-8	0-3	2-2	0	6	6	0	2	10	1	0	0	0	1	9
12	Treasure Hunt	G	12:58	1-3	0-0	0-0	1	3	4	1	0	2	0	1	0	0	0	10
44	Dre'una Edwards		04:37	1-2	0-0	0-0	1	1	2	2	0	2	0	1	0	0	0	-8
1	Robyn Benton		15:55	2-4	0-0	0-0	2	1	3	1	1	4	0	2	1	1	0	6
34	Emma King		03:55	0-0	0-0	0-0	0	0	0	0	0	0	2	0	0	0	0	-4
Team							0	1	1			0		0				
<b>Totals</b>				17-34	1-5	3-5	5	18	23	7	5	38	7	9	3	3	2	8

Shooting By Period		
1 <sup>st</sup> FG%	8-17	47.1%
3PT%	0-1	0.0%
FT%	0-0	0%
2 <sup>nd</sup> FG%	9-17	52.9%
3PT%	1-4	25.0%
FT%	3-5	60%
GM FG%	17-34	50.0%
3PT%	1-5	20.0%
FT%	3-5	60.0%

Dead Ball Rebounds: 1, 0

Technical Fouls::NONE

	MSU	UK
Biggest lead	7 (1 <sup>st</sup> 1:44)	8 (2 <sup>nd</sup> 1:03)
Best Scoring Run	8 (1 <sup>st</sup> 3:35)	10 (2 <sup>nd</sup> 6:15)
Lead Changes	2	
Times Tied	2	
Time with Lead	07:08	11:11

Points from	MSU	UK
Turnovers	4	15
Paint	16	20
Second Chance	0	4
Fast Breaks	2	4
Bench	2	6

	Period by Period Scoring				
	1st	2nd	3rd	4th	TOT
MSU	21	9	14	23	67
UK	16	22	19	26	83



**Mississippi St. at Kentucky**

03/03/22 Bridgestone Arena, Nashville  
2021-22 Women's Basketball

Officials: Denise Brooks, Roy Gulbeyan, Karlleena Tobin

**Period 3**

**Quarter Starters:**

<b>UK</b>	3 Massengill J	5 Howard R	11 Walker J	12 Hunt T	21 Leveretter N
<b>MSU</b>	0 Hayes A	1 Taylor M	2 Jordan J	22 Kohl C	23 Thompson C

Game Time	UK	Score	Diff	MSU
10:00	1 BENTON R substitution out			
10:00	12 HUNT T substitution in			
10:00				10 HAYES A substitution out
10:00				1 TAYLOR M substitution in
09:39	5 HOWARD R 2pt FG outside the paint, jump shot missed			
09:36				23 THOMPSON C defensive rebound (6)
09:16		<b>38-32</b>	<b>6</b>	0 HAYES A 2pt FG in the paint, layup made (6)
09:04	5 HOWARD R 3pt FG , jump shot missed			
09:00				23 THOMPSON C defensive rebound (7)
08:55	21 LEVERETTER N foul personal (2 - 1)			0 HAYES A foul drawn (2)
08:55	12 HUNT T substitution out			
08:55	21 LEVERETTER N substitution out			
08:55	1 BENTON R substitution in			
08:55	44 EDWARDS D substitution in			
08:34				1 TAYLOR M turnover lost ball (3)
08:30	11 WALKER J 2pt FG fast break from turnover in the paint, layup made (12)	<b>40-32</b>	<b>8</b>	
08:30	5 HOWARD R assist (3)			
08:14		<b>40-34</b>	<b>6</b>	22 KOHL C 2pt FG in the paint, layup made (6)
08:14				23 THOMPSON C assist (2)
08:03	1 BENTON R 2pt FG in the paint, layup missed			
07:59	44 EDWARDS D offensive rebound (3)			
07:59	44 EDWARDS D 2pt FG second chance in the paint, layup made (4)	<b>42-34</b>	<b>8</b>	
07:32		<b>42-36</b>	<b>6</b>	1 TAYLOR M 2pt FG in the paint, layup made (2)
07:32				0 HAYES A assist (3)
07:11	11 WALKER J 3pt FG , jump shot made (15)	<b>45-36</b>	<b>9</b>	
07:11	1 BENTON R assist (1)			
06:43	3 MASSENGILL J foul shooting (1 - 2)			23 THOMPSON C foul drawn (1)
06:43		<b>45-37</b>	<b>8</b>	23 THOMPSON C free throw 1 - 2 made (8)
06:43		<b>45-38</b>	<b>7</b>	23 THOMPSON C free throw 2 - 2 made (9)
06:14	1 BENTON R 2pt FG in the paint, floating jump shot made (6)	<b>47-38</b>	<b>9</b>	
05:54	11 WALKER J foul drawn (3)			0 HAYES A foul offensive (1 - 1)
05:54				0 HAYES A turnover offensive (3)
05:39	11 WALKER J foul drawn (4)			0 HAYES A foul shooting (2 - 2)
05:39	11 WALKER J free throw 1 - 2 made (16)	<b>48-38</b>	<b>10</b>	
05:39	11 WALKER J free throw 2 - 2 made (17)	<b>49-38</b>	<b>11</b>	
05:39	11 WALKER J substitution out			
05:39	34 KING E substitution in			
05:23				1 TAYLOR M 2pt FG in the paint, turnaround jump shot missed
05:20	5 HOWARD R defensive rebound (2)			
05:15	3 MASSENGILL J 2pt FG outside the paint, pull up jump shot made (8)	<b>51-38</b>	<b>13</b>	
05:15	5 HOWARD R assist (4)			



**Mississippi St. at Kentucky**

03/03/22 Bridgestone Arena, Nashville  
2021-22 Women's Basketball

Officials: Denise Brooks, Roy Gulbeyan, Karlleena Tobin

Game Time	UK	Score	Diff	MSU
04:52				23 THOMPSON C 2pt FG outside the paint, jump shot missed
04:49	5 HOWARD R defensive rebound (3)			
04:43	44 EDWARDS D foul drawn (1)			0 HAYES A foul shooting (3 - 3)
04:43	Timeout media			
04:43				0 HAYES A substitution out
04:43				10 HAYES A substitution in
04:43	44 EDWARDS D free throw 1 - 2 made (5)	<b>52-38</b>	<b>14</b>	
04:43	44 EDWARDS D free throw 2 - 2 made (6)	<b>53-38</b>	<b>15</b>	
04:29				10 HAYES A 2pt FG in the paint, layup missed
04:26	1 BENTON R defensive rebound (4)			
04:21	1 BENTON R 3pt FG , jump shot missed			
04:18	44 EDWARDS D offensive rebound (4)			
04:17	44 EDWARDS D turnover lost ball (2)			10 HAYES A steal (1)
04:05		<b>53-40</b>	<b>13</b>	23 THOMPSON C 2pt FG from turnover in the paint, layup made (11)
04:05				1 TAYLOR M assist (4)
03:42	5 HOWARD R 2pt FG outside the paint, turnaround jump shot missed			
03:38	44 EDWARDS D offensive rebound (5)			
03:38	44 EDWARDS D 2pt FG second chance in the paint, layup blocked			
03:38				22 KOHL C block (2)
03:36				10 HAYES A defensive rebound (2)
03:23	34 KING E substitution out			
03:23	11 WALKER J substitution in			
03:23				1 TAYLOR M substitution out
03:23				0 HAYES A substitution in
03:17				2 JORDAN J 2pt FG in the paint, driving layup missed
03:14				22 KOHL C offensive rebound (3)
03:14				22 KOHL C 2pt FG second chance in the paint, layup missed
03:13	44 EDWARDS D defensive rebound (6)			
03:02	3 MASSENGILL J 3pt FG , jump shot missed			
03:00	11 WALKER J offensive rebound (7)			
02:56	3 MASSENGILL J 2pt FG second chance in the paint, jump shot missed			
02:53				0 HAYES A defensive rebound (3)
02:49	1 BENTON R foul personal (2 - 3)			0 HAYES A foul drawn (3)
02:49	44 EDWARDS D substitution out			
02:49	12 HUNT T substitution in			
02:49				22 KOHL C substitution out
02:49				1 TAYLOR M substitution in
02:36		<b>53-42</b>	<b>11</b>	0 HAYES A 2pt FG in the paint, layup made (8)
02:23	11 WALKER J foul drawn (5)			10 HAYES A foul shooting (1 - 4)
02:23	11 WALKER J free throw 1 - 2 made (18)	<b>54-42</b>	<b>12</b>	
02:23	11 WALKER J free throw 2 - 2 made (19)	<b>55-42</b>	<b>13</b>	
02:23	12 HUNT T substitution out			
02:23	44 EDWARDS D substitution in			
02:11				0 HAYES A turnover lost ball (4)
01:50	3 MASSENGILL J 2pt FG from turnover in the paint, layup made (10)	<b>57-42</b>	<b>15</b>	
01:50	1 BENTON R assist (2)			



**Mississippi St. at Kentucky**

03/03/22 Bridgestone Arena, Nashville  
2021-22 Women's Basketball

Officials: Denise Brooks, Roy Gulbeyan, Karlleena Tobin

Game Time	UK	Score	Diff	MSU
01:33	11 WALKER J foul shooting (1 - 4)			23 THOMPSON C foul drawn (2)
01:33		<b>57-43</b>	<b>14</b>	23 THOMPSON C free throw 1 - 2 made (12)
01:33		<b>57-44</b>	<b>13</b>	23 THOMPSON C free throw 2 - 2 made (13)
01:33				10 HAYES A substitution out
01:33				22 KOHL C substitution in
01:13	5 HOWARD R foul offensive (3 - 5)			1 TAYLOR M foul drawn (2)
01:13	5 HOWARD R turnover offensive (3)			
00:56				0 HAYES A 2pt FG from turnover in the paint, jump shot blocked
00:56	1 BENTON R block (2)			
00:56	44 EDWARDS D defensive rebound (7)			
00:46	3 MASSENGILL J turnover lost ball (3)			2 JORDAN J steal (3)
00:29				2 JORDAN J 2pt FG from turnover outside the paint, jump shot missed
00:26	3 MASSENGILL J defensive rebound (4)			
00:02	5 HOWARD R 3pt FG , jump shot missed			
00:00				22 KOHL C defensive rebound (4)
<b>END OF PERIOD</b>				
<b>UK 57-44 MSU</b>				



**Mississippi St. at Kentucky**

03/03/22 Bridgestone Arena, Nashville  
2021-22 Women's Basketball

Officials: Denise Brooks, Roy Gulbeyan, Karlleena Tobin

**Mississippi St. - 14**

NO.	Name	C/G	Min	FG			Rebounds			Fouls		TP	AS	TO	ST	Blocks		+/-
				M-A	M-A	M-A	OR	DR	TOT	PF	FD					BS	BA	
22	Charlotte Kohl	C	08:44	1-2	0-0	0-0	1	1	2	0	0	2	0	0	0	1	0	-5
0	Anastasia Hayes	G	08:40	2-3	0-0	0-0	0	1	1	3	2	4	1	2	0	0	1	-5
1	Myah Taylor	G	09:26	1-2	0-0	0-0	0	0	0	0	1	2	1	1	0	0	0	-5
2	Jerkaila Jordan	G	10:00	0-2	0-0	0-0	0	0	0	0	0	0	0	0	1	0	0	-5
23	Caterrion Thompson	G	10:00	1-2	0-0	4-4	0	2	2	0	2	6	1	0	0	0	0	-5
10	Aislynn Hayes		03:10	0-1	0-0	0-0	0	1	1	1	0	0	0	0	1	0	0	0
Team							0	0	0			0						
<b>Totals</b>				5-12	0-0	4-4	1	5	6	4	5	14	3	3	2	1	1	-5

Shooting By Period		
3rd FG%	5-12	41.7%
3PT%	0-0	0.0%
FT%	4-4	100%
GM FG%	5-12	41.7%
3PT%	0-0	0.0%
FT%	4-4	100.0%

Dead Ball Rebounds: 0, 0

Technical Fouls::NONE

**Kentucky - 19**

NO.	Name	C/G	Min	FG			Rebounds			Fouls		TP	AS	TO	ST	Blocks		+/-
				M-A	M-A	M-A	OR	DR	TOT	PF	FD					BS	BA	
21	Nyah Leveretter	F	01:05	0-0	0-0	0-0	0	0	0	1	0	0	0	0	0	0	0	-2
3	Jazmine Massengill	G	10:00	2-4	0-1	0-0	0	1	1	1	0	4	0	1	0	0	0	5
5	Rhyné Howard	G	10:00	0-4	0-2	0-0	0	2	2	1	0	0	2	1	0	0	0	5
11	Jada Walker	G	07:44	2-2	1-1	4-4	1	0	1	1	3	9	0	0	0	0	0	3
12	Treasure Hunt	G	01:31	0-0	0-0	0-0	0	0	0	0	0	0	0	0	0	0	0	-2
1	Robyn Benton		08:55	1-3	0-1	0-0	0	1	1	1	0	2	2	0	0	1	0	7
44	Dre'una Edwards		08:29	1-2	0-0	2-2	3	2	5	0	1	4	0	1	0	0	1	7
34	Emma King		02:16	0-0	0-0	0-0	0	0	0	0	0	0	0	0	0	0	0	2
Team							0	0	0			0						
<b>Totals</b>				6-15	1-5	6-6	4	6	10	5	4	19	4	3	0	1	1	5

Shooting By Period		
3rd FG%	6-15	40.0%
3PT%	1-5	20.0%
FT%	6-6	100%
GM FG%	6-15	40.0%
3PT%	1-5	20.0%
FT%	6-6	100.0%

Dead Ball Rebounds: 0, 0

Technical Fouls::NONE

	MSU	UK
Biggest lead	0 (1 <sup>st</sup> 10:00)	15 (3 <sup>rd</sup> 4:43)
Best Scoring Run	4(3 <sup>rd</sup> 2:36)	8(3 <sup>rd</sup> 4:43)
Lead Changes	0	
Times Tied	0	
Time with Lead	00:00	09:39

	MSU	UK
Points from		
Turnovers	2	6
Paint	10	8
Second Chance	0	2
Fast Breaks	0	2
Bench	0	6

Period by Period Scoring					
	1st	2nd	3rd	4th	TOT
MSU	21	9	14	23	67
UK	16	22	19	26	83

**Mississippi St. at Kentucky**03/03/22 Bridgestone Arena, Nashville  
2021-22 Women's Basketball

Officials: Denise Brooks, Roy Gulbeyan, Karlleena Tobin

**Period 4****Quarter Starters:**

<b>UK</b>	1 Benton R	3 Massengill J	5 Howard R	11 Walker J	44 Edwards D
<b>MSU</b>	0 Hayes A	1 Taylor M	10 Hayes A	22 Kohl C	23 Thompson C

Game Time	UK	Score	Diff	MSU
10:00				2 JORDAN J substitution out
10:00				10 HAYES A substitution in
09:51				0 HAYES A 2pt FG outside the paint, jump shot missed
09:50	defensive rebound (34)			
09:28	44 EDWARDS D 2pt FG in the paint, layup made (8)	<b>59-44</b>	<b>15</b>	
09:28	3 MASSENGILL J assist (2)			
09:04				1 TAYLOR M 3pt FG , jump shot missed
09:00	3 MASSENGILL J defensive rebound (5)			
08:55	11 WALKER J turnover travel (1)			
08:32				1 TAYLOR M 2pt FG from turnover in the paint, jump shot missed
08:29	44 EDWARDS D defensive rebound (8)			
08:25	44 EDWARDS D 2pt FG fast break in the paint, layup made (10)	<b>61-44</b>	<b>17</b>	
08:05				23 THOMPSON C 2pt FG in the paint, turnaround jump shot missed
08:02	44 EDWARDS D defensive rebound (9)			
07:52	3 MASSENGILL J 2pt FG in the paint, jump shot made (12)	<b>63-44</b>	<b>19</b>	
07:51				Timeout 30 Sec
07:51	1 BENTON R substitution out			
07:51	21 LEVERETTER N substitution in			
07:37	11 WALKER J foul shooting (2 - 1)			0 HAYES A foul drawn (4)
07:37				0 HAYES A free throw 1 - 2 missed
07:37				offensive dead ball rebound (3)
07:37				0 HAYES A free throw 2 - 2 missed
07:37	21 LEVERETTER N defensive rebound (4)			
07:25	44 EDWARDS D turnover bad pass (3)			1 TAYLOR M steal (1)
07:20		<b>63-46</b>	<b>17</b>	1 TAYLOR M 2pt FG fast break from turnover in the paint, layup made (4)
06:51	21 LEVERETTER N 2pt FG in the paint, turnaround jump shot made (2)	<b>65-46</b>	<b>19</b>	
06:51	11 WALKER J assist (2)			
06:34				1 TAYLOR M 2pt FG in the paint, driving layup missed
06:30	44 EDWARDS D defensive rebound (10)			
06:27	5 HOWARD R 3pt FG , jump shot missed			
06:23	44 EDWARDS D offensive rebound (11)			
06:23	44 EDWARDS D 2pt FG second chance in the paint, layup missed			
06:21				23 THOMPSON C defensive rebound (8)
06:15		<b>65-48</b>	<b>17</b>	23 THOMPSON C 2pt FG fast break in the paint, driving layup made (15)
05:46	11 WALKER J 2pt FG in the paint, floating jump shot made (21)	<b>67-48</b>	<b>19</b>	
05:46	3 MASSENGILL J assist (3)			
05:25				23 THOMPSON C 2pt FG in the paint, jump shot missed
05:22	44 EDWARDS D defensive rebound (12)			
05:17				22 KOHL C substitution out



**Mississippi St. at Kentucky**

03/03/22 Bridgestone Arena, Nashville  
2021-22 Women's Basketball

Officials: Denise Brooks, Roy Gulbeyan, Karlleena Tobin

Game Time	UK	Score	Diff	MSU
05:17				2 JORDAN J substitution in
05:17	Timeout 30 Sec			
05:17	5 HOWARD R substitution out			
05:17	1 BENTON R substitution in			
05:13	3 MASSENGILL J 2pt FG outside the paint, jump shot missed			
05:10				10 HAYES A defensive rebound (3)
05:04	21 LEVERETTER N foul shooting (3 - 2)			2 JORDAN J foul drawn (3)
05:04		<b>67-49</b>	<b>18</b>	2 JORDAN J free throw 1 - 2 made (14)
05:04		<b>67-50</b>	<b>17</b>	2 JORDAN J free throw 2 - 2 made (15)
04:54	44 EDWARDS D 2pt FG in the paint, layup made (12)	<b>69-50</b>	<b>19</b>	
04:54	3 MASSENGILL J assist (4)			
04:42		<b>69-52</b>	<b>17</b>	1 TAYLOR M 2pt FG in the paint, driving layup made (6)
04:22	44 EDWARDS D 2pt FG in the paint, jump shot missed			
04:20	44 EDWARDS D offensive rebound (13)			
04:20	44 EDWARDS D 2pt FG second chance in the paint, layup made (14)	<b>71-52</b>	<b>19</b>	
04:20	44 EDWARDS D foul drawn (2)			23 THOMPSON C foul shooting (3 - 1)
04:20	44 EDWARDS D free throw 1 - 1 missed			
04:19	11 WALKER J offensive rebound (8)			
04:13	44 EDWARDS D 2pt FG second chance in the paint, layup made (16)	<b>73-52</b>	<b>21</b>	
04:05		<b>73-54</b>	<b>19</b>	23 THOMPSON C 2pt FG fast break in the paint, layup made (17)
04:05				1 TAYLOR M assist (5)
03:57	11 WALKER J 3pt FG , jump shot missed			
03:56				defensive dead ball rebound (4)
03:56	44 EDWARDS D foul personal (3 - 3)			2 JORDAN J foul drawn (4)
03:44		<b>73-56</b>	<b>17</b>	2 JORDAN J 2pt FG in the paint, pull up jump shot made (17)
03:14	21 LEVERETTER N foul drawn (2)			1 TAYLOR M foul personal (4 - 2)
03:10	44 EDWARDS D 2pt FG in the paint, driving layup missed			
03:08				1 TAYLOR M defensive rebound (2)
03:04		<b>73-58</b>	<b>15</b>	23 THOMPSON C 2pt FG in the paint, layup made (19)
03:04				1 TAYLOR M assist (6)
03:04				Timeout 30 Sec
02:58	1 BENTON R 2pt FG fast break in the paint, layup made (8)	<b>75-58</b>	<b>17</b>	
02:58	44 EDWARDS D assist (1)			
02:49	44 EDWARDS D foul personal (4 - 4)			10 HAYES A foul drawn (2)
02:42				23 THOMPSON C 2pt FG outside the paint, turnaround jump shot missed
02:39	3 MASSENGILL J defensive rebound (6)			
02:29	21 LEVERETTER N 2pt FG in the paint, jump shot made (4)	<b>77-58</b>	<b>19</b>	
02:29	3 MASSENGILL J assist (5)			
02:20	jump ball situation			
02:20	44 EDWARDS D steal (1)			23 THOMPSON C turnover lost ball (1)
02:20	11 WALKER J substitution out			
02:20	34 KING E substitution in			
01:59	jump ball situation			
01:59	1 BENTON R turnover lost ball (3)			0 HAYES A steal (2)
01:48	3 MASSENGILL J foul shooting (2 - 5)			0 HAYES A foul drawn (5)
01:48		<b>77-59</b>	<b>18</b>	0 HAYES A free throw 1 - 2 made (9)



**Mississippi St. at Kentucky**

03/03/22 Bridgestone Arena, Nashville  
2021-22 Women's Basketball

Officials: Denise Brooks, Roy Gulbeyan, Karlleena Tobin

Game Time	UK	Score	Diff	MSU
01:48		<b>77-60</b>	<b>17</b>	0 HAYES A free throw 2 - 2 made (10)
01:36	34 KING E turnover lost ball (1)			2 JORDAN J steal (4)
01:31		<b>77-62</b>	<b>15</b>	2 JORDAN J 2pt FG fast break from turnover in the paint, layup made (19)
01:29	Timeout 60 Sec			
01:17	1 BENTON R 2pt FG in the paint, layup made (10)	<b>79-62</b>	<b>17</b>	
01:17	44 EDWARDS D assist (2)			
01:05				2 JORDAN J 3pt FG , jump shot missed
01:02	44 EDWARDS D defensive rebound (14)			
00:58	44 EDWARDS D 2pt FG fast break in the paint, layup made (18)	<b>81-62</b>	<b>19</b>	
00:58	3 MASSENGILL J assist (6)			
00:50		<b>81-64</b>	<b>17</b>	0 HAYES A 2pt FG in the paint, layup made (12)
00:50				1 TAYLOR M assist (7)
00:50	21 LEVERETTER N foul shooting (4 - 6)			0 HAYES A foul drawn (6)
00:50		<b>81-65</b>	<b>16</b>	0 HAYES A free throw 1 - 1 made (13)
00:44	1 BENTON R turnover lost ball (4)			1 TAYLOR M steal (2)
00:40				10 HAYES A 3pt FG from turnover, jump shot missed
00:39				2 JORDAN J offensive rebound (4)
00:32		<b>81-67</b>	<b>14</b>	2 JORDAN J 2pt FG from turnover second chance in the paint, layup made (21)
00:31	Timeout 30 Sec			
00:27	jump ball situation			
00:25	1 BENTON R 2pt FG outside the paint, jump shot made (12)	<b>83-67</b>	<b>16</b>	
00:25	3 MASSENGILL J assist (7)			
00:09				10 HAYES A 2pt FG in the paint, layup missed
00:07	34 KING E defensive rebound (1)			
00:06	34 KING E turnover lost ball (2)			10 HAYES A steal (2)
00:02				0 HAYES A 2pt FG from turnover outside the paint, jump shot missed
00:00	21 LEVERETTER N defensive rebound (5)			
<b>END OF GAME</b>				
<b>UK 83-67 MSU</b>				



**Mississippi St. at Kentucky**

03/03/22 Bridgestone Arena, Nashville  
2021-22 Women's Basketball

Officials: Denise Brooks, Roy Gulbeyan, Karlleena Tobin

**Mississippi St. - 23**

NO.	Name	C	Min	FG			Rebounds			Fouls		TP	AS	TO	ST	Blocks		+/-
				M-A	M-A	M-A	OR	DR	TOT	PF	FD					BS	BA	
22	Charlotte Kohl	C	04:43	0-0	0-0	0-0	0	0	0	0	0	0	0	0	0	0	0	-6
0	Anastasia Hayes	G	10:00	1-3	0-0	3-5	0	0	0	0	3	5	0	0	1	0	0	-3
1	Myah Taylor	G	10:00	2-5	0-1	0-0	0	1	1	1	0	4	3	0	2	0	0	-3
2	Jerkaila Jordan	G	05:17	3-4	0-1	2-2	1	0	1	0	2	8	0	0	1	0	0	3
23	Caterrion Thompson	G	10:00	3-6	0-0	0-0	0	1	1	1	0	6	0	1	0	0	0	-3
10	Aislynn Hayes		10:00	0-2	0-1	0-0	0	1	1	0	1	0	0	0	1	0	0	-3
Team							0	0	0		0		0					
<b>Totals</b>				9-20	0-3	5-7	1	3	4	2	6	23	3	1	5	0	0	-3

Shooting By Period		
4 <sup>th</sup> FG%	9-20	45.0%
3PT%	0-3	0.0%
FT%	5-7	71.4%
GM FG%	9-20	45.0%
3PT%	0-3	0.0%
FT%	5-7	71.4%

Dead Ball Rebounds: 1, 1

Technical Fouls::NONE

**Kentucky - 26**

NO.	Name	F	Min	FG			Rebounds			Fouls		TP	AS	TO	ST	Blocks		+/-
				M-A	M-A	M-A	OR	DR	TOT	PF	FD					BS	BA	
21	Nyah Leveretter	F	07:51	2-2	0-0	0-0	0	2	2	2	1	4	0	0	0	0	0	-3
3	Jazmine Massengill	G	10:00	1-2	0-0	0-0	0	2	2	1	0	2	6	0	0	0	0	3
5	Rhyné Howard	G	04:43	0-1	0-1	0-0	0	0	0	0	0	0	0	0	0	0	0	6
11	Jada Walker	G	07:40	1-2	0-1	0-0	1	0	1	1	0	2	1	1	0	0	0	6
12	Treasure Hunt	G	00:00	0-0	0-0	0-0	0	0	0	0	0	0	0	0	0	0	0	0
44	Dre'una Edwards		10:00	6-9	0-0	0-1	2	5	7	2	1	12	2	1	1	0	0	3
1	Robyn Benton		07:26	3-3	0-0	0-0	0	0	0	0	0	6	0	2	0	0	0	3
34	Emma King		02:20	0-0	0-0	0-0	0	1	1	0	0	0	0	2	0	0	0	-3
Team							0	1	1		0		0					
<b>Totals</b>				13-19	0-2	0-1	3	11	14	6	2	26	9	6	1	0	0	3

Shooting By Period		
4 <sup>th</sup> FG%	13-19	68.4%
3PT%	0-2	0.0%
FT%	0-1	0%
GM FG%	13-19	68.4%
3PT%	0-2	0.0%
FT%	0-1	0.0%

Dead Ball Rebounds: 0, 0

Technical Fouls::NONE

	MSU	UK
Biggest lead	0 (1 <sup>st</sup> 10:00)	21 (4 <sup>th</sup> 4:13)
Best Scoring Run	6(4 <sup>th</sup> 3:04)	6(4 <sup>th</sup> 7:52)
Lead Changes	0	
Times Tied	0	
Time with Lead	00:00	09:51

	MSU	UK
Points from		
Turnovers	8	0
Paint	18	24
Second Chance	2	4
Fast Breaks	8	6
Bench	0	18

Period by Period Scoring					
	1st	2nd	3rd	4th	TOT
MSU	21	9	14	23	67
UK	16	22	19	26	83



**Mississippi St. at Kentucky**

03/03/22 Bridgestone Arena, Nashville  
2021-22 Women's Basketball

Game Time: 7:00 PM  
Game Duration: 1:47

Officials: Denise Brooks, Roy Gulbeyan, Karlleena Tobin

**Mississippi St. - 37**

NO.	Name	C/G	Min	FG			Rebounds			Fouls		TP	AS	TO	ST	Blocks		+/-
				M-A	M-A	M-A	OR	DR	TOT	PF	FD					BS	BA	
22	Charlotte Kohl	C	13:27	1-2	0-0	0-0	1	1	2	0	0	2	0	0	0	1	0	-11
0	Anastasia Hayes	G	18:40	3-6	0-0	3-5	0	1	1	3	5	9	1	2	1	0	1	-8
1	Myah Taylor	G	19:26	3-7	0-1	0-0	0	1	1	1	1	6	4	1	2	0	0	-8
2	Jerkaila Jordan	G	15:17	3-6	0-1	2-2	1	0	1	0	2	8	0	0	2	0	0	-2
23	Caterrion Thompson	G	20:00	4-8	0-0	4-4	0	3	3	1	2	12	1	1	0	0	0	-8
10	Aislynn Hayes		13:10	0-3	0-1	0-0	0	2	2	1	1	0	0	0	2	0	0	-3
Team							0	0	0			0		0				
<b>Totals</b>				14-32	0-3	9-11	2	8	10	6	11	37	6	4	7	1	1	-8

Shooting By Period		
3 <sup>rd</sup> FG%	5-12	41.7%
3PT%	0-0	0.0%
FT%	4-4	100%
4 <sup>th</sup> FG%	9-20	45.0%
3PT%	0-3	0.0%
FT%	5-7	71.4%
GM FG%	14-32	43.8%
3PT%	0-3	0.0%
FT%	9-11	81.8%

Technical Fouls::NONE

Dead Ball Rebounds: 1, 1

**Kentucky - 45**

NO.	Name	C/G	Min	FG			Rebounds			Fouls		TP	AS	TO	ST	Blocks		+/-
				M-A	M-A	M-A	OR	DR	TOT	PF	FD					BS	BA	
21	Nyah Leveretter	F	08:56	2-2	0-0	0-0	0	2	2	3	1	4	0	0	0	0	0	-5
3	Jazmine Massengill	G	20:00	3-6	0-1	0-0	0	3	3	2	0	6	6	1	0	0	0	8
5	Rhyn Howard	G	14:43	0-5	0-3	0-0	0	2	2	1	0	0	2	1	0	0	0	11
11	Jada Walker	G	15:24	3-4	1-2	4-4	2	0	2	2	3	11	1	1	0	0	0	9
12	Treasure Hunt	G	01:31	0-0	0-0	0-0	0	0	0	0	0	0	0	0	0	0	0	-2
1	Robyn Benton		16:21	4-6	0-1	0-0	0	1	1	1	0	8	2	2	0	1	0	10
44	Dre'una Edwards		18:29	7-11	0-0	2-3	5	7	12	2	2	16	2	2	1	0	1	10
34	Emma King		04:36	0-0	0-0	0-0	0	1	1	0	0	0	0	2	0	0	0	-1
Team							0	1	1			0		0				
<b>Totals</b>				19-34	1-7	6-7	7	17	24	11	6	45	13	9	1	1	1	8

Shooting By Period		
3 <sup>rd</sup> FG%	6-15	40.0%
3PT%	1-5	20.0%
FT%	6-6	100%
4 <sup>th</sup> FG%	13-19	68.4%
3PT%	0-2	0.0%
FT%	0-1	0%
GM FG%	19-34	55.9%
3PT%	1-7	14.3%
FT%	6-7	85.7%

Technical Fouls::NONE

Dead Ball Rebounds: 0, 0

	MSU	UK
Biggest lead	0 (1 <sup>st</sup> 10:00)	21 (4 <sup>th</sup> 4:13)
Best Scoring Run	6(4 <sup>th</sup> 3:04)	8(3 <sup>rd</sup> 4:43)
Lead Changes	0	
Times Tied	0	
Time with Lead	00:00	19:39

	MSU	UK
Points from		
Turnovers	10	6
Paint	28	32
Second Chance	2	6
Fast Breaks	8	8
Bench	0	24

Period by Period Scoring					
	1st	2nd	3rd	4th	TOT
MSU	21	9	14	23	67
UK	16	22	19	26	83



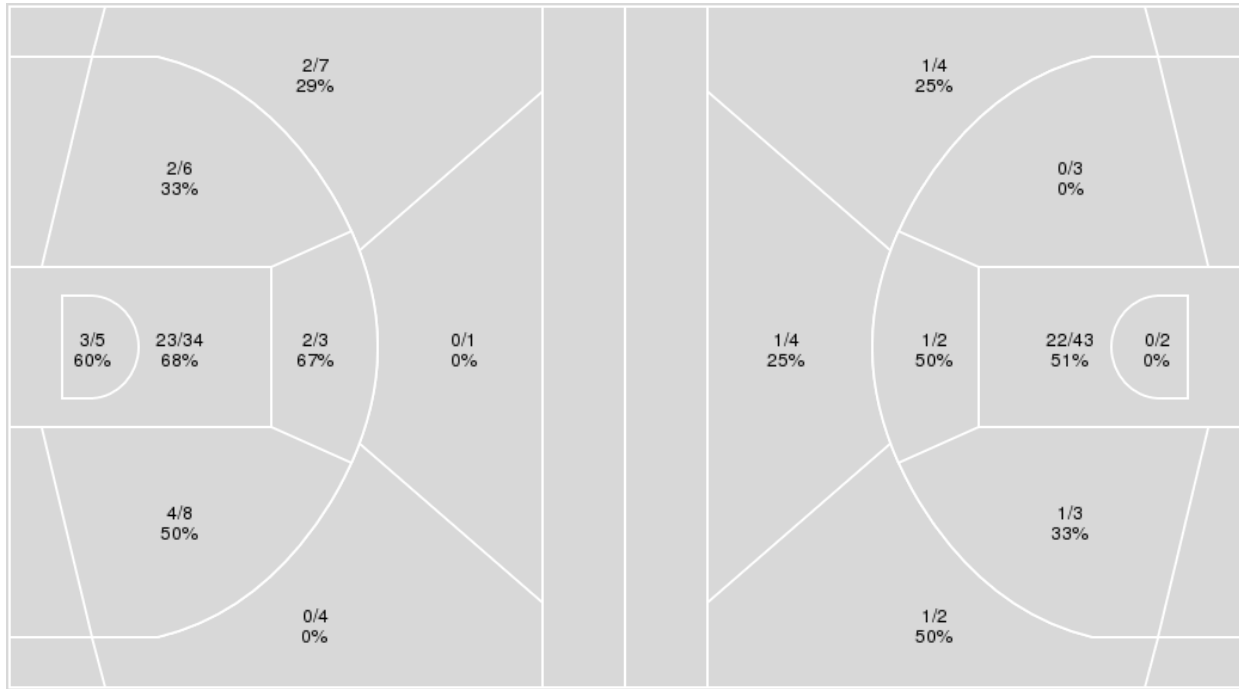
**Officials:** Denise Brooks, Roy Gulbeyan, Karlleena Tobin

{ Players => 00, 1, 3, 4, 5, 5, 11, 12, 21, 34, 44; } FG Types => All;  
 Results => All;

{ Players => 0, 1, 2, 3, 4, 5, 10, 12, 15, 22, 23, 24, 25, 44; } FG Types  
 => All; Results => All;

**Kentucky**

**Mississippi St.**



Kentucky	M/A	%
Field Goals	36/68	53
2 Points	34/56	61
3 Points	2/12	17
Free Throws	9/12	75

Mississippi St.	M/A	%
Field Goals	27/63	43
2 Points	24/53	45
3 Points	3/10	30
Free Throws	10/16	62



**Mississippi St. at Kentucky**

03/03/22 Bridgestone Arena, Nashville  
2021-22 Women's Basketball

Officials: Denise Brooks, Roy Gulbeyan, Karlleena Tobin

**Mississippi St.**

No	Name	Mins		Score		Points Diff		Points per Min		Assists		Rebounds		Steals		Turnovers	
		On	Off	On	Off	On	Off	On	Off	On	Off	On	Off	On	Off	On	Off
0	Anastasia Hayes	38:40	01:20	65 - 81	2 - 2	-16	0	1.68	1.50	14	1	24	1	9	1	14	0
1	Myah Taylor	37:03	02:57	67 - 75	0 - 8	-8	-8	1.81	0.00	15	0	21	4	9	1	12	2
2	Jerkaila Jordan	32:19	07:41	61 - 65	6 - 18	-4	-12	1.89	0.78	14	1	23	2	9	1	11	3
10	Aislynn Hayes	22:41	17:19	45 - 50	22 - 33	-5	-11	1.98	1.27	10	5	14	11	8	2	8	6
22	Charlotte Kohl	29:45	10:15	35 - 55	32 - 28	-20	4	1.18	3.12	8	7	20	5	6	4	11	3
23	Caterrion Thompson	38:00	02:00	62 - 81	5 - 2	-19	3	1.63	2.50	14	1	23	2	9	1	12	2
24	Ashley Jones	01:32	38:28	0 - 8	67 - 75	-8	-8	0.00	1.74	0	15	0	25	0	10	2	12

**Kentucky**

No	Name	Mins		Score		Points Diff		Points per Min		Assists		Rebounds		Steals		Turnovers	
		On	Off	On	Off	On	Off	On	Off	On	Off	On	Off	On	Off	On	Off
1	Robyn Benton	32:16	07:44	71 - 55	12 - 12	16	0	2.20	1.55	17	3	39	8	3	1	15	3
3	Jazmine Massengill	36:09	03:51	75 - 62	8 - 5	13	3	2.07	2.08	19	1	44	3	3	1	16	2
5	Rhyne Howard	32:53	07:07	65 - 47	18 - 20	18	-2	1.98	2.53	14	6	35	12	3	1	12	6
11	Jada Walker	32:25	07:35	67 - 49	16 - 18	18	-2	2.07	2.11	14	6	38	9	4	0	11	7
12	Treasure Hunt	14:29	25:31	28 - 20	55 - 47	8	8	1.93	2.16	4	16	17	30	3	1	6	12
21	Nyah Leveretter	20:11	19:49	46 - 36	37 - 31	10	6	2.28	1.87	11	9	23	24	3	1	12	6
34	Emma King	08:31	31:29	16 - 21	67 - 46	-5	21	1.88	2.13	6	14	10	37	0	4	7	11
44	Dre'una Edwards	23:06	16:54	47 - 45	36 - 22	2	14	2.03	2.13	15	5	29	18	1	3	11	7

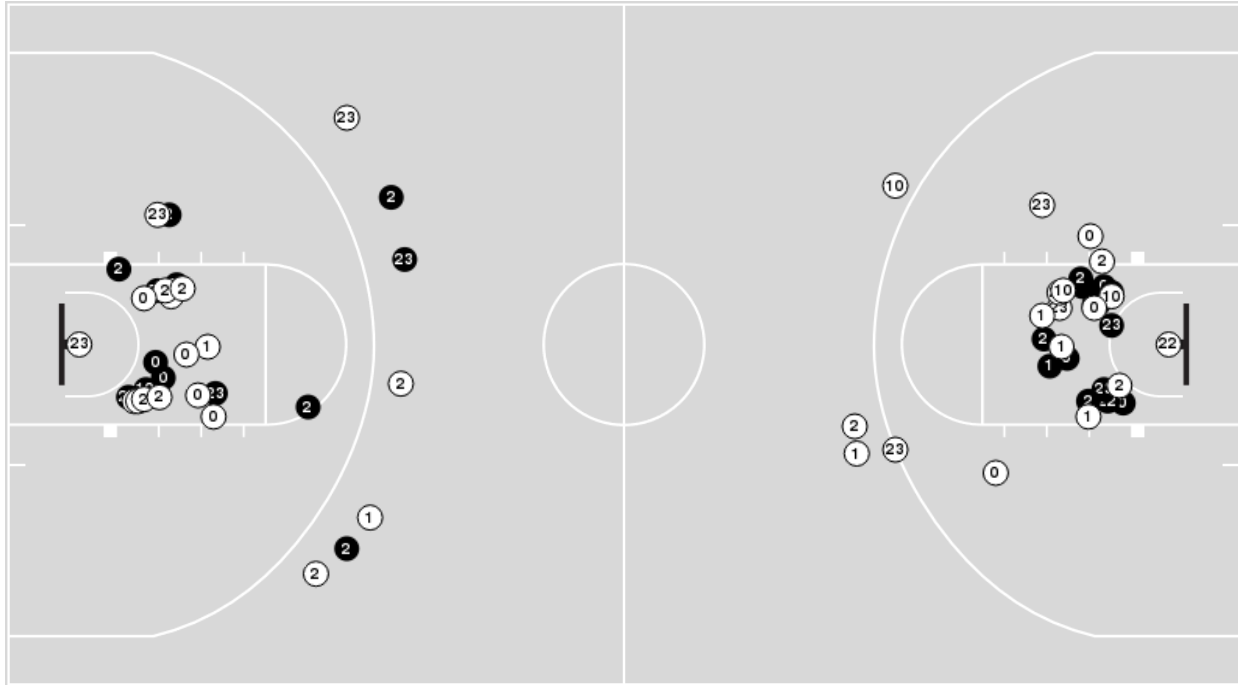


Officials: Denise Brooks, Roy Gulbeyan, Karlleena Tobin

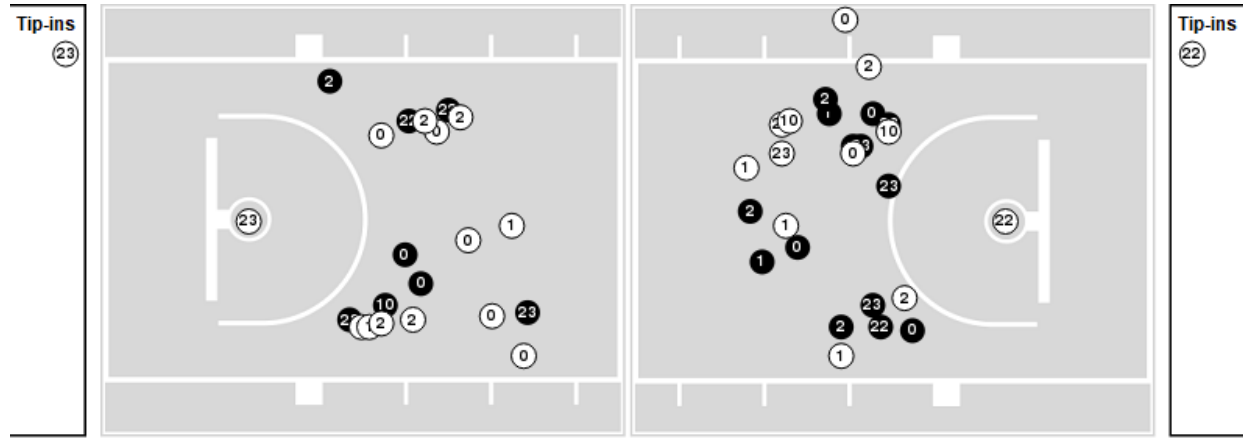
Players => 0, 1, 2, 3, 4, 5, 10, 12, 15, 22, 23, 24, 25, 44FG Types=>AllResults=>All

**Mississippi St.**

**All Field Goals**



**Blow Up Chart**



● Made ○ Missed N - Player Number

Mississippi St.	M/A	%
Field Goals	27/63	43
2 Points	24/53	45
3 Points	3/10	30
Free Throws	10/16	62

Mississippi St.	M/A	%
Points in the Paint	44 (22 / 45)	49
Fast Break Points	10 (5/6)	83
Second Chance Points	2 (1/6)	17
Effective FG%	45	

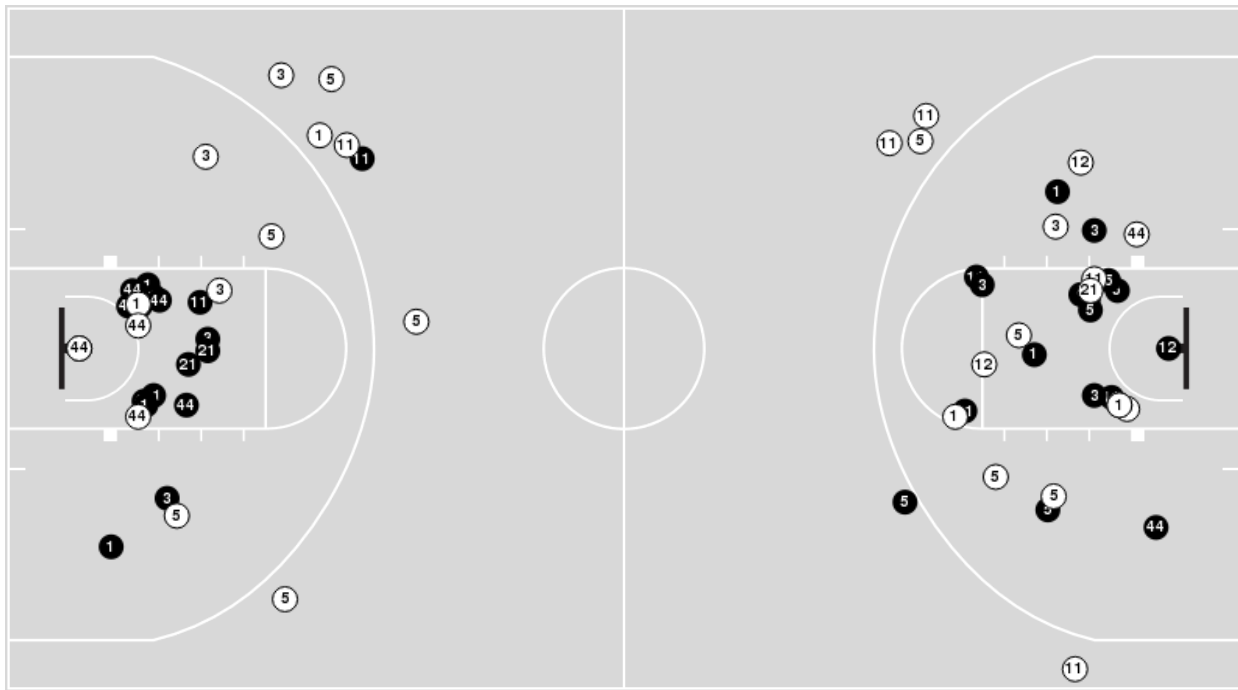


Officials: Denise Brooks, Roy Gulbeyan, Karlleena Tobin

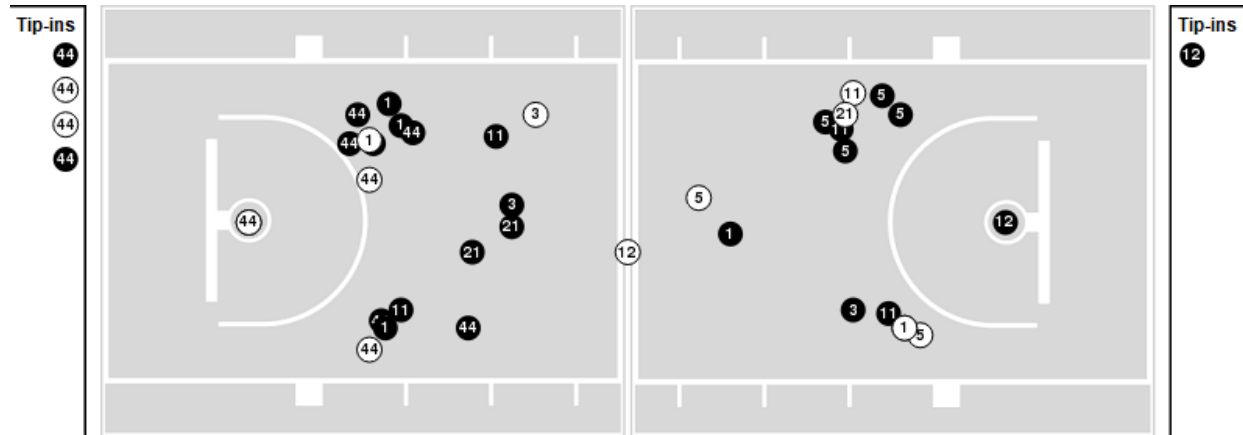
Players => 00, 1, 3, 4, 5, 5, 11, 12, 21, 34, 44 FG Types=>All Results=>All

### Kentucky

#### All Field Goals



#### Blow Up Chart



● Made ○ Missed N - Player Number

Kentucky	M/A	%
Field Goals	36/68	53
2 Points	34/56	61
3 Points	2/12	17
Free Throws	9/12	75

Kentucky	M/A	%
Points in the Paint	52 (26 / 39)	67
Fast Break Points	12 (6/6)	100
Second Chance Points	10 (5/12)	42
Effective FG%	54	



**Mississippi St. at Kentucky**

03/03/22 Bridgestone Arena, Nashville  
2021-22 Women's Basketball

Officials: Denise Brooks, Roy Gulbeyan, Karlleena Tobin

**Mississippi St.**

Lineup	Quarter On	Time On	Quarter Off	Time Off	Time on Court	Score	Score Diff	Reb	Stl	Tov	Ass	PPP
0- Hayes A/ 1- Taylor M/ 2- Jordan J/ 22- Kohl C/ 23- Thompson C/	1	10:00	1	03:55	06:05	11-10	1	7	0	2	2	0.9615
0- Hayes A/ 1- Taylor M/ 2- Jordan J/ 10- Hayes A/ 22- Kohl C/	1	03:55	1	01:55	02:00	5-2	3	2	1	2	1	1.0246
0- Hayes A/ 1- Taylor M/ 2- Jordan J/ 10- Hayes A/ 23- Thompson C/	1	01:55	2	10:00	01:55	5-4	1	1	0	0	2	1.6667
0- Hayes A/ 1- Taylor M/ 10- Hayes A/ 22- Kohl C/ 23- Thompson C/	2	10:00	2	07:47	02:13	2-4	-2	1	0	1	1	0.5000
0- Hayes A/ 2- Jordan J/ 22- Kohl C/ 23- Thompson C/ 24- Jones A/	2	07:47	2	06:15	01:32	0-8	-8	0	0	2	0	0.0000
0- Hayes A/ 1- Taylor M/ 2- Jordan J/ 22- Kohl C/ 23- Thompson C/	2	06:15	2	03:23	02:52	3-2	1	1	1	0	1	0.5102
0- Hayes A/ 1- Taylor M/ 2- Jordan J/ 10- Hayes A/ 23- Thompson C/	2	03:23	2	01:36	01:47	4-4	0	1	0	1	2	1.0000
0- Hayes A/ 1- Taylor M/ 10- Hayes A/ 22- Kohl C/ 23- Thompson C/	2	01:36	2	00:51	00:45	0-4	-4	0	0	2	0	0.0000
0- Hayes A/ 2- Jordan J/ 10- Hayes A/ 22- Kohl C/ 23- Thompson C/	2	00:51	3	10:00	00:51	0-0	0	2	1	0	0	0.0000
0- Hayes A/ 1- Taylor M/ 2- Jordan J/ 22- Kohl C/ 23- Thompson C/	3	10:00	3	04:43	05:17	8-13	-5	2	0	2	2	1.0152
1- Taylor M/ 2- Jordan J/ 10- Hayes A/ 22- Kohl C/ 23- Thompson C/	3	04:43	3	03:23	01:20	2-2	0	1	1	0	1	1.0000
0- Hayes A/ 2- Jordan J/ 10- Hayes A/ 22- Kohl C/ 23- Thompson C/	3	03:23	3	02:49	00:34	0-0	0	2	0	0	0	0.0000
0- Hayes A/ 1- Taylor M/ 2- Jordan J/ 10- Hayes A/ 23- Thompson C/	3	02:49	3	01:33	01:16	4-4	0	0	0	1	0	1.3889
0- Hayes A/ 1- Taylor M/ 2- Jordan J/ 22- Kohl C/ 23- Thompson C/	3	01:33	4	10:00	01:33	0-0	0	1	1	0	0	0.0000
0- Hayes A/ 1- Taylor M/ 10- Hayes A/ 22- Kohl C/ 23- Thompson C/	4	10:00	4	05:17	04:43	4-10	-6	1	1	0	0	0.4505
0- Hayes A/ 1- Taylor M/ 2- Jordan J/ 10- Hayes A/ 23- Thompson C/	4	05:17	4	00:00	05:17	19-16	3	3	4	1	3	1.3380



**Mississippi St. at Kentucky**

03/03/22 Bridgestone Arena, Nashville  
2021-22 Women's Basketball

Officials: Denise Brooks, Roy Gulbeyan, Karlleena Tobin

**Kentucky**

Lineup	Quarter On	Time On	Quarter Off	Time Off	Time on Court	Score	Score Diff	Reb	Stl	Tov	Ass	PPP
3- Massengill J/ 5- Howard R/ 11- Walker J/ 12- Hunt T/ 21- Leveretter N/	1	10:00	1	06:32	03:28	8-4	4	2	1	2	1	1.1429
3- Massengill J/ 5- Howard R/ 11- Walker J/ 12- Hunt T/ 44- Edwards D/	1	06:32	1	05:55	00:37	0-2	-2	2	0	0	0	0.0000
1- Benton R/ 3- Massengill J/ 5- Howard R/ 11- Walker J/ 44- Edwards D/	1	05:55	1	03:55	02:00	2-5	-3	2	0	0	1	0.5000
1- Benton R/ 5- Howard R/ 11- Walker J/ 34- King E/ 44- Edwards D/	1	03:55	1	02:59	00:56	0-3	-3	1	0	0	0	0.0000
1- Benton R/ 3- Massengill J/ 5- Howard R/ 34- King E/ 44- Edwards D/	1	02:59	1	01:55	01:04	2-2	0	0	0	2	1	0.6667
1- Benton R/ 3- Massengill J/ 5- Howard R/ 12- Hunt T/ 34- King E/	1	01:55	2	10:00	01:55	4-5	-1	1	0	0	1	1.3333
1- Benton R/ 3- Massengill J/ 5- Howard R/ 11- Walker J/ 12- Hunt T/	2	10:00	2	07:47	02:13	4-2	2	4	1	0	1	1.0000
1- Benton R/ 5- Howard R/ 11- Walker J/ 12- Hunt T/ 21- Leveretter N/	2	07:47	2	04:52	02:55	8-2	6	2	1	2	1	1.4706
1- Benton R/ 3- Massengill J/ 11- Walker J/ 12- Hunt T/ 21- Leveretter N/	2	04:52	2	03:02	01:50	2-1	1	6	0	2	0	0.5000
1- Benton R/ 3- Massengill J/ 5- Howard R/ 11- Walker J/ 21- Leveretter N/	2	03:02	3	10:00	03:02	8-4	4	3	0	1	1	1.1834
3- Massengill J/ 5- Howard R/ 11- Walker J/ 12- Hunt T/ 21- Leveretter N/	3	10:00	3	08:55	01:05	0-2	-2	0	0	0	0	0.0000
1- Benton R/ 3- Massengill J/ 5- Howard R/ 11- Walker J/ 44- Edwards D/	3	08:55	3	05:39	03:16	11-6	5	1	0	0	2	2.2541
1- Benton R/ 3- Massengill J/ 5- Howard R/ 34- King E/ 44- Edwards D/	3	05:39	3	03:23	02:16	4-2	2	5	0	1	1	1.0309
1- Benton R/ 3- Massengill J/ 5- Howard R/ 11- Walker J/ 44- Edwards D/	3	03:23	3	02:49	00:34	0-0	0	2	0	0	0	0.0000
1- Benton R/ 3- Massengill J/ 5- Howard R/ 11- Walker J/ 12- Hunt T/	3	02:49	3	02:23	00:26	2-2	0	0	0	0	0	2.2727
1- Benton R/ 3- Massengill J/ 5- Howard R/ 11- Walker J/ 44- Edwards D/	3	02:23	4	07:51	04:32	8-2	6	6	0	3	2	1.0000
3- Massengill J/ 5- Howard R/ 11- Walker J/ 21- Leveretter N/ 44- Edwards D/	4	07:51	4	05:17	02:34	4-4	0	4	0	1	2	1.0000
1- Benton R/ 3- Massengill J/ 11- Walker J/ 21- Leveretter N/ 44- Edwards D/	4	05:17	4	02:20	02:57	10-10	0	3	1	0	3	1.3441
1- Benton R/ 3- Massengill J/ 21- Leveretter N/ 34- King E/ 44- Edwards D/	4	02:20	4	00:00	02:20	6-9	-3	3	0	4	3	0.8571



### Mississippi St. at Kentucky

03/03/22 Bridgestone Arena, Nashville  
2021-22 Women's Basketball

Officials: Denise Brooks, Roy Gulbeyan, Karlleena Tobin

#### Mississippi St.

Lineup	Time	Score	Score Diff	Pts/Min	Reb	Stl	Tov	Ass	PPP
0- Hayes A/ 1- Taylor M/ 2- Jordan J/ 22- Kohl C/ 23- Thompson C/	15:47	22-25	-3	1.3939	11	2	4	5	0.8088
0- Hayes A/ 1- Taylor M/ 2- Jordan J/ 10- Hayes A/ 23- Thompson C/	10:15	32-28	4	3.1220	5	4	3	7	1.3289
0- Hayes A/ 1- Taylor M/ 10- Hayes A/ 22- Kohl C/ 23- Thompson C/	07:41	6-18	-12	0.7809	2	1	3	1	0.4032
0- Hayes A/ 1- Taylor M/ 2- Jordan J/ 10- Hayes A/ 22- Kohl C/	02:00	5-2	3	2.5000	2	1	2	1	1.0246
0- Hayes A/ 2- Jordan J/ 22- Kohl C/ 23- Thompson C/ 24- Jones A/	01:32	0-8	-8	0.0000	0	0	2	0	0.0000
0- Hayes A/ 2- Jordan J/ 10- Hayes A/ 22- Kohl C/ 23- Thompson C/	01:25	0-0	0	0.0000	4	1	0	0	0.0000
1- Taylor M/ 2- Jordan J/ 10- Hayes A/ 22- Kohl C/ 23- Thompson C/	01:20	2-2	0	1.5000	1	1	0	1	1.0000



**Mississippi St. at Kentucky**

03/03/22 Bridgestone Arena, Nashville  
2021-22 Women's Basketball

**Game Time:** 7:00 PM  
**Game Duration:** 1:47

**Officials:** Denise Brooks, Roy Gulbeyan, Karlleena Tobin

**Kentucky**

Lineup	Time	Score	Score Diff	Pts/Min	Reb	Stl	Tov	Ass	PPP
1- Benton R/ 3- Massengill J/ 5- Howard R/ 11- Walker J/ 44- Edwards D/	10:22	21-13	8	2.0257	11	0	3	5	1.1745
3- Massengill J/ 5- Howard R/ 11- Walker J/ 12- Hunt T/ 21- Leveretter N/	04:33	8-6	2	1.7582	2	1	2	1	0.8889
1- Benton R/ 3- Massengill J/ 5- Howard R/ 34- King E/ 44- Edwards D/	03:20	6-4	2	1.8000	5	0	3	2	0.8721
1- Benton R/ 3- Massengill J/ 5- Howard R/ 11- Walker J/ 21- Leveretter N/	03:02	8-4	4	2.6374	3	0	1	1	1.1834
1- Benton R/ 3- Massengill J/ 11- Walker J/ 21- Leveretter N/ 44- Edwards D/	02:57	10-10	0	3.3898	3	1	0	3	1.3441
1- Benton R/ 5- Howard R/ 11- Walker J/ 12- Hunt T/ 21- Leveretter N/	02:55	8-2	6	2.7429	2	1	2	1	1.4706
1- Benton R/ 3- Massengill J/ 5- Howard R/ 11- Walker J/ 12- Hunt T/	02:39	6-4	2	2.2642	4	1	0	1	1.2295
3- Massengill J/ 5- Howard R/ 11- Walker J/ 21- Leveretter N/ 44- Edwards D/	02:34	4-4	0	1.5584	4	0	1	2	1.0000
1- Benton R/ 3- Massengill J/ 21- Leveretter N/ 34- King E/ 44- Edwards D/	02:20	6-9	-3	2.5714	3	0	4	3	0.8571
1- Benton R/ 3- Massengill J/ 5- Howard R/ 12- Hunt T/ 34- King E/	01:55	4-5	-1	2.0870	1	0	0	1	1.3333
1- Benton R/ 3- Massengill J/ 11- Walker J/ 12- Hunt T/ 21- Leveretter N/	01:50	2-1	1	1.0909	6	0	2	0	0.5000
1- Benton R/ 5- Howard R/ 11- Walker J/ 34- King E/ 44- Edwards D/	00:56	0-3	-3	0.0000	1	0	0	0	0.0000
3- Massengill J/ 5- Howard R/ 11- Walker J/ 12- Hunt T/ 44- Edwards D/	00:37	0-2	-2	0.0000	2	0	0	0	0.0000